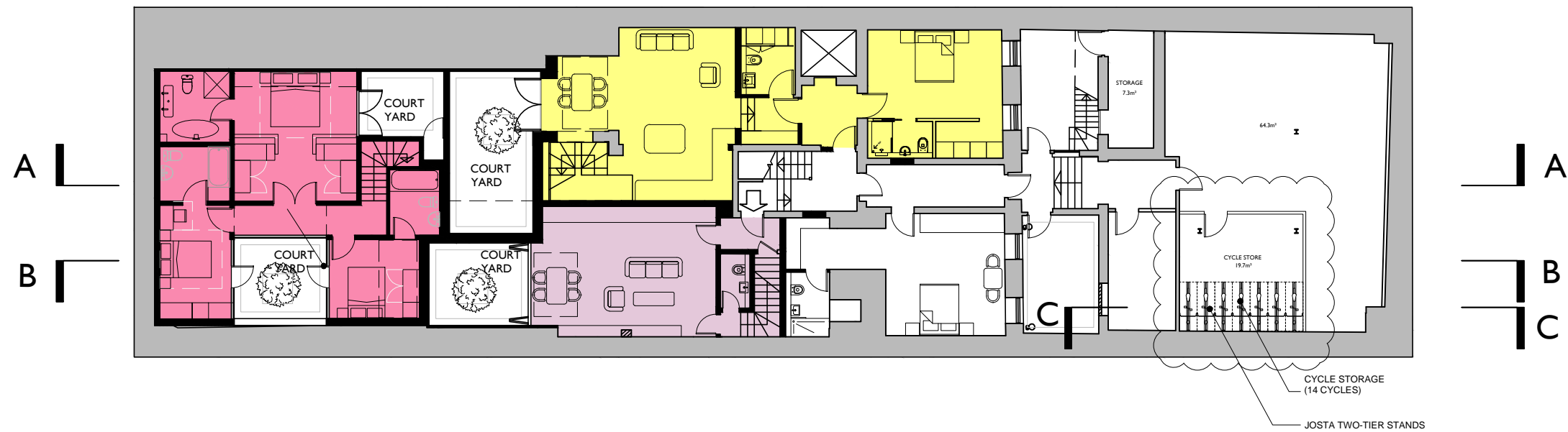


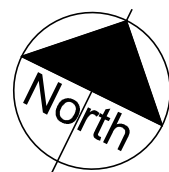
NOTE: DRY RISER AND ASSOCIATED PIPEWORK AND BOXING TO BE REMOVED

BUILDING REGULATIONS REQUIREMENTS- LOBBIES FORMED AS REQUIRED WITH BUILDING REGULATION PART B "FIRE SAFETY"



3654-PL-610 - F  
BASEMENT PLAN - AS PROPOSED

REV	Revision	Rev date
A	Notes added in response to Planners comments	11.01.17
B	Cycle store updated	14.03.17
C	Cycle store updated	18.05.17
D	Cycle store updated	01.06.17
E	Cycle store updated	08.06.17
F	Areas added	20.06.17



VISUAL SCALE 1:200 @ A3



James Taylor Construction