

Information contained within this drawing is the sole copyright of HDQA Ltd, and is not to be reproduced without express permission. No implied licence exists. This drawing is not to be used for land transfer or valuation purposes. Do not scale from this drawing. All dimensions & levels are to be checked on site by the contractor. Issued for purposes indicated only. Drawing errors and omissions to be reported to the architect.

Notes

- Existing building fabric
- Proposed building fabric

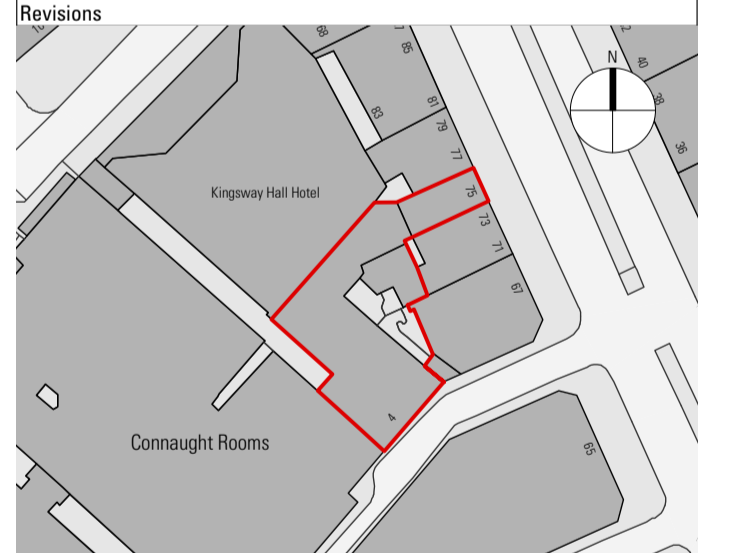
Drawings based on outline survey from different sources

Schedule Of Accommodation

Floor	No.Units
Basement Level	0
Lower Ground Floor	26
Upper Ground Floor	24
Mezzanine Floor	1
First Floor	28
Second Floor	24
Third Floor	24
Fourth Floor	24
Fifth Floor	20
Sixth Floor	20
Seventh Floor	14
Eighth Floor	6
TOTAL:	211

Note:
 10% of rooms fully wheelchair accessible (i.e. 21 rooms), split as following:
 5% fully accessible and 5% adaptable (i.e. 11 wheelchair accessible rooms and 10 adaptable rooms).

- Key**
- external wheelchair accessible route
 - internal wheelchair accessible route
 - accessible entrance
 - accessible emergency exit
 - passenger lift
 - passenger / fire-fighting lift
 - platform lift
 - accessible WC
 - escape stairs
 - safe refuge
 - wheelchair adaptable room
 - wheelchair accessible room
 - tracked ceiling hoist route
 - ramp (1:20)
- P1 12/6/17 Planning Application Submission



HARPER DOWNIE
 CREATIVE ARCHITECTURE

Third Floor
 77 Bastwick Street
 London EC1V 3PZ
 T +44 20 7490 7674
 studio@harperdownie.com
 www.harperdownie.com

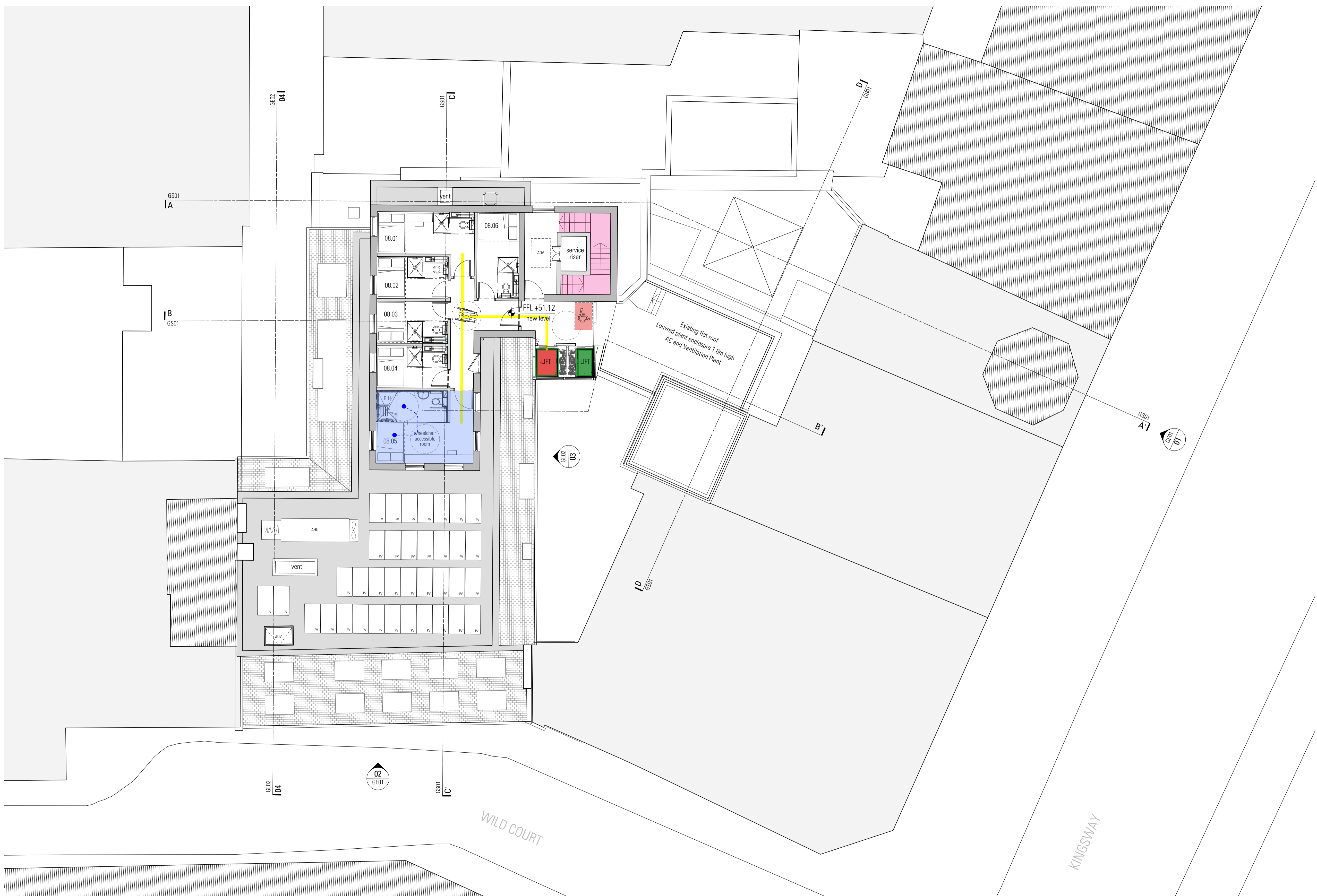
Client
 Z Hotels

Project
 4 Wild Court
 London
 WC2B 4AU

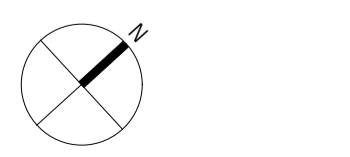
Drawing Title
 Access Plans
 Proposed Eighth Floor Plan

Status	Planning	Drawn	LF	Checked	PR
Scale	1:100 @ A1 / 1:200 @ A3			Date	Feb 2017

Drwg. No. & Revision
646-GA08/Acc-P1



08 Proposed Eighth Floor
 Scale 1:100 @ A1 / 1:200 @ A3



0m 2m 5m 10m 20m