

WESTERN COAL DROPS - NORTH ELEVATION - AS PROPOSED

REFERENCE PHOTOS



STANDARD BAT BOX
 WITH 20MM CRESCENT OPENING



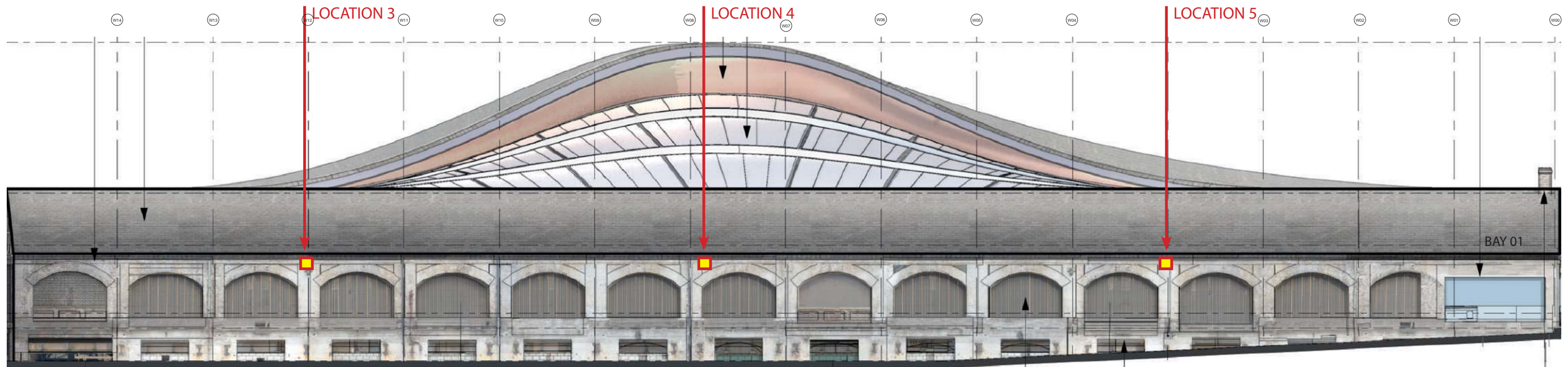
STANDARD BIRD BOX
 WITH 36MM/ 48MM APERTURE



GENERAL NOTES

Bat and bird boxes to be customised for each location, to be faced in 4-6 no site salvaged bricks per box, laid in the appropriate brick bond for each location and pointed in lime mortar to depth and colour to match to the adjacent area.

Locations selected at the appropriate height for each species and facing different aspects as recommended, with an emphasis on the west elevation of the Western Coal Drops as the most secluded elevation of the scheme, consistent with Design and Access Statement section 2.2 on CDY Microclimate.



WESTERN COAL DROPS - WEST ELEVATION - AS PROPOSED

LOCATION	BAY	SPECIES	HABITAT REQUIREMENT	APPROX. HEIGHT	ASPECT	BRICK BOND
1	WCD NORTH (E)	PIPISTRELLE BAT	STANDARD BAT BOX: 20MM CRESCENT OPENING AT 3-10M	7M	NORTH	ENGLISH
2	WCD NORTH (W)	BLACK REDSTART	STANDARD BIRD BOX: 48MM APERTURE AT 2-8M	7M	NORTH	ENGLISH
3	WCD BAY 14	HOUSE SPARROW	STANDARD BIRD BOX: 36MM APERTURE AT 2-10M	7M	WEST	ENGLISH
4	WCD BAY 09	PIPISTRELLE BAT	STANDARD BAT BOX: 20MM CRESCENT OPENING AT 3-10M	7M	WEST	ENGLISH
5	WCD BAY 05	BLACK REDSTART	STANDARD BIRD BOX: 48MM APERTURE AT 2-8M	6M	WEST	ENGLISH

Status Code (as defined in BS1192)
 D3 - Issued for contractor design
 D4 - Issued for manufacture/procurement
Work In Progress (WIP)
 S0 - Initial Status or WIP
Shared
 S1 - Issued for co-ordination
 S2 - Issued for information
 S3 - Issued for internal review
 S4 - Issued for construction approval
Documentation (Pre-construction)
 D1 - Issued for costing
 D2 - Issued for tender

Documentation (Contractual)
 A - Issued for construction
 B - Issued for construction but with comments
 C - Comprehensive revision required
Archive
 AB - Record Drawing

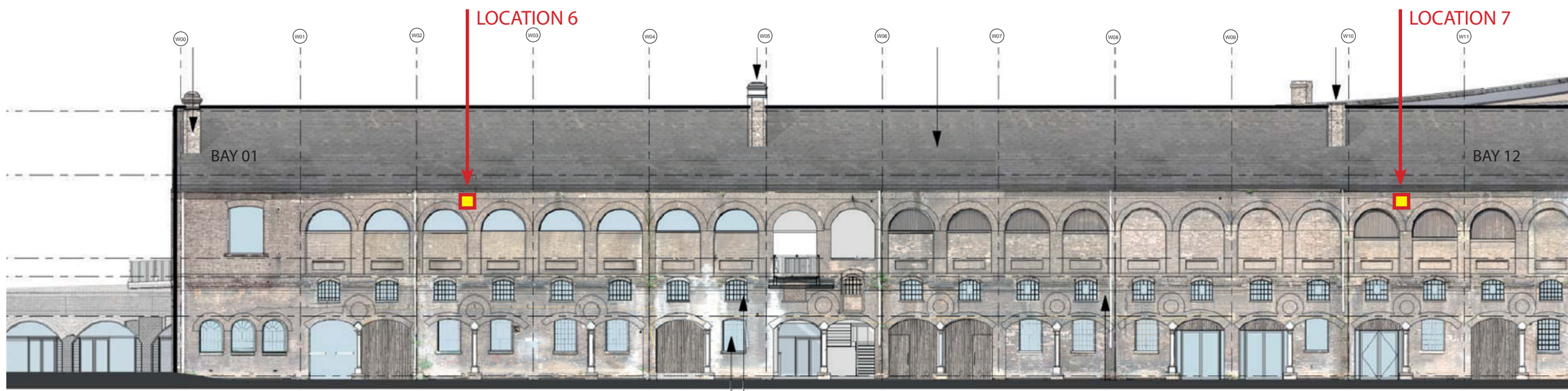
rev | by | checked | date | description



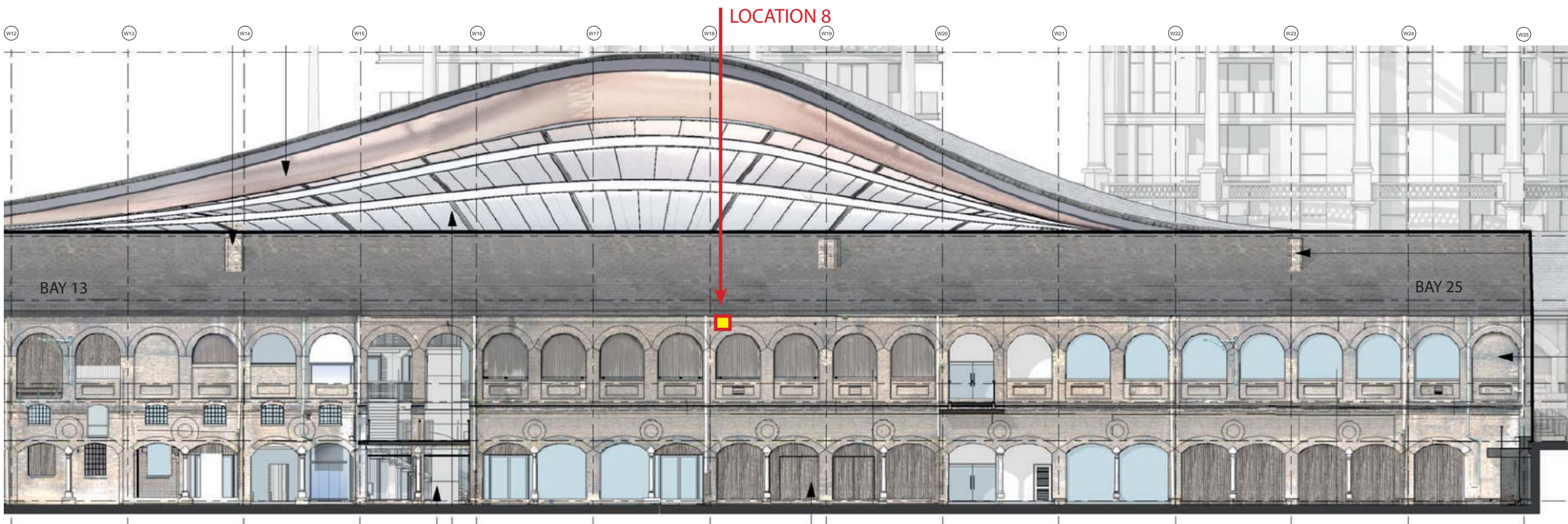
bam
 B&M Design Ltd
 An operating company of
 BAM Construct UK Ltd
 Architecture
 Interior Design
 3D Visualisation
 Feasibility Studies
 Structural Engineering
 Environmental Services
 Building Information Modelling
 Centrium Business Park
 Giffins Way, St Albans
 Hertfordshire, AL1 2RD
 01727 864200
 design@bam.co.uk
 www.bam.co.uk

project COAL DROPS YARD
 title Bird and Bat Box Proposals
 purpose of issue
 scale 1:250 @ A3
 date 03/13/17
 site
 dgm / doc ref. KXC-MO- 001-BD4389-A-20-4000

drawn NS
 checked MF
 Role C/SFB
 Content
 B&M job no. 4389
 dgm status S0
 INFORMATION
 rev 001



EASTERN COAL DROPS - EAST ELEVATION BAYS 01- 12 - AS PROPOSED



EASTERN COAL DROPS - EAST ELEVATION BAYS 13-25 - AS PROPOSED

LOCATION	BAY	SPECIES	HABITAT REQUIREMENT	APPROX. HEIGHT	ASPECT	BRICK BOND
6	ECD BAY 03	PIPISTRELLE BAT	STANDARD BAT BOX: 20MM CRESCENT OPENING AT 3-10M	9M	EAST	ENGLISH
7	ECD BAY 11	HOUSE SPARROW	STANDARD BIRD BOX: 36MM APERTURE AT 2-10M	9M	EAST	ENGLISH
7	ECD BAY 19	PIPISTRELLE BAT	STANDARD BAT BOX: 20MM CRESCENT OPENING AT 3-10M	9M	EAST	ENGLISH

GENERAL NOTES

Bat and bird boxes to be customised for each location, to be faced in 4-6 no site salvaged bricks per box, laid in the appropriate brick bond for each location and pointed in lime mortar to depth and colour to match to the adjacent area.

Locations selected at the appropriate height for each species and facing different aspects as recommended, with an emphasis on the west elevation of the Western Coal Drops as the most secluded elevation of the scheme, consistent with Design and Access Statement section 2.2 on CDY Microclimate.

Status Code (as defined in BS1192)
 D3 - Issued for contractor design
 D4 - Issued for manufacture/procurement
Work In Progress (WIP)
 S0 - Initial Status or WIP
Shared
 S1 - Issued for co-ordination
 S2 - Issued for information
 S3 - Issued for internal review
 S4 - Issued for construction approval
Documentation (Pre-construction)
 D1 - Issued for costing
 D2 - Issued for tender

Documentation (Contractual)
 A - Issued for construction
 B - Issued for construction but with comments
 C - Comprehensive revision required
Archive
 AB - Record Drawing

rev	by	chkd	date	description



bam
 B&M Design Ltd
 An operating company of
 B&M Construct UK Ltd
 Architecture
 Interior Design
 3D Visualisation
 Feasibility Studies
 Structural Engineering
 Environmental Services
 Building Information Modelling
 Centrium Business Park
 Giffins Way, St Albans
 Hertfordshire, AL1 2RD
 01727 864200
 design@bam.co.uk
 www.bam.co.uk

project COAL DROPS YARD
 title Bird and Bat Box Proposals
 Sheet 2
 purpose of issue
INFORMATION
 scale 1:250 @ A3
 date 03/13/17
 site plot/location project
 KXC-M0-001-BD4389-A-20-4001
 drawn NS
 checked MF
 Role C/SFB
 B&M job no. 4389
 rev S0
 dng status 001