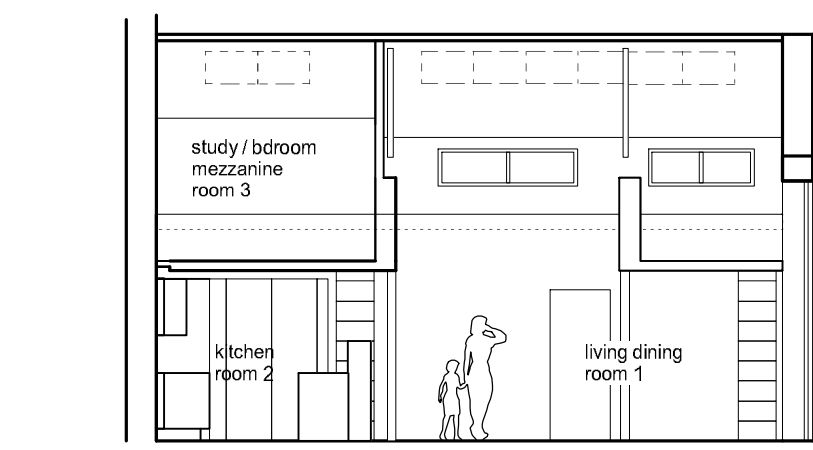
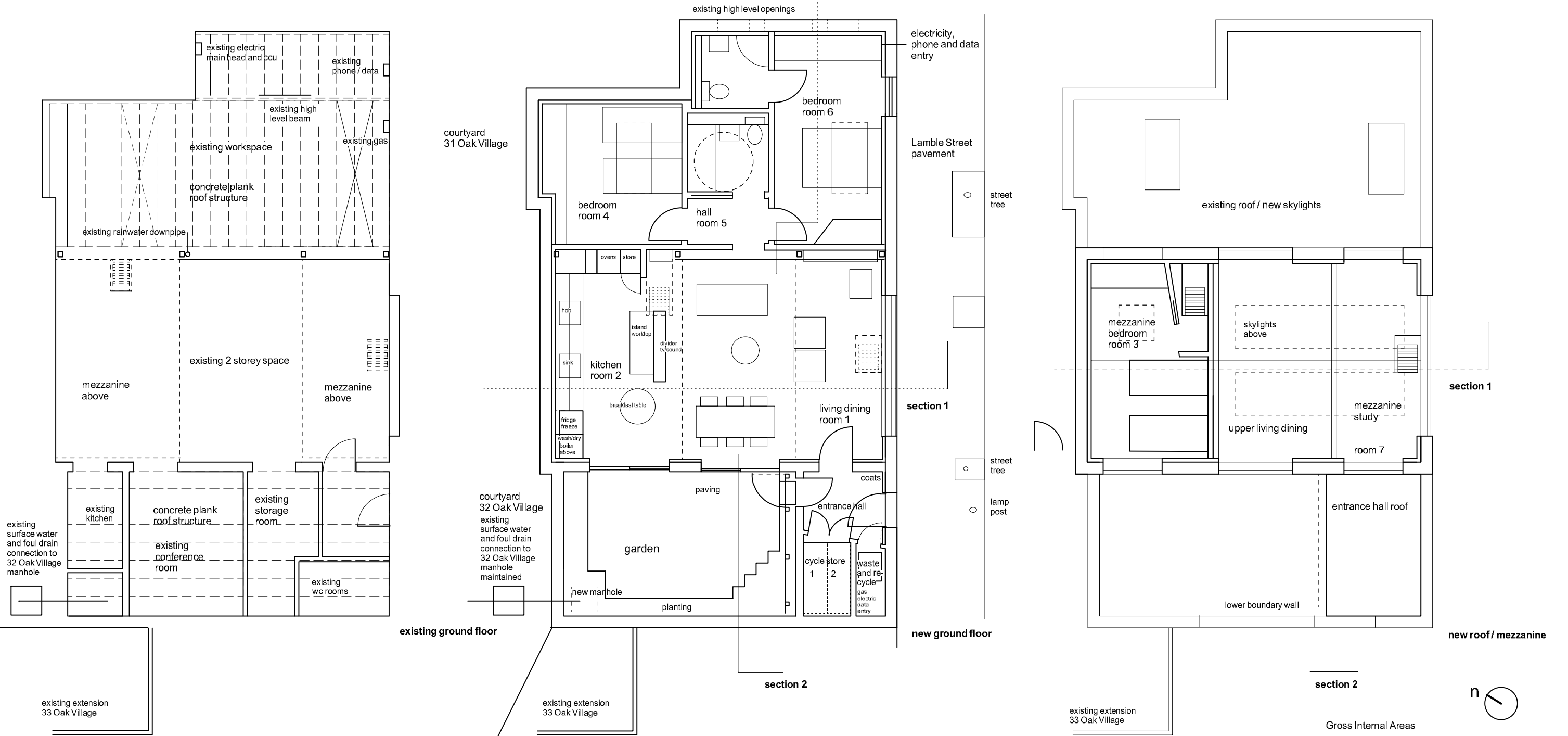
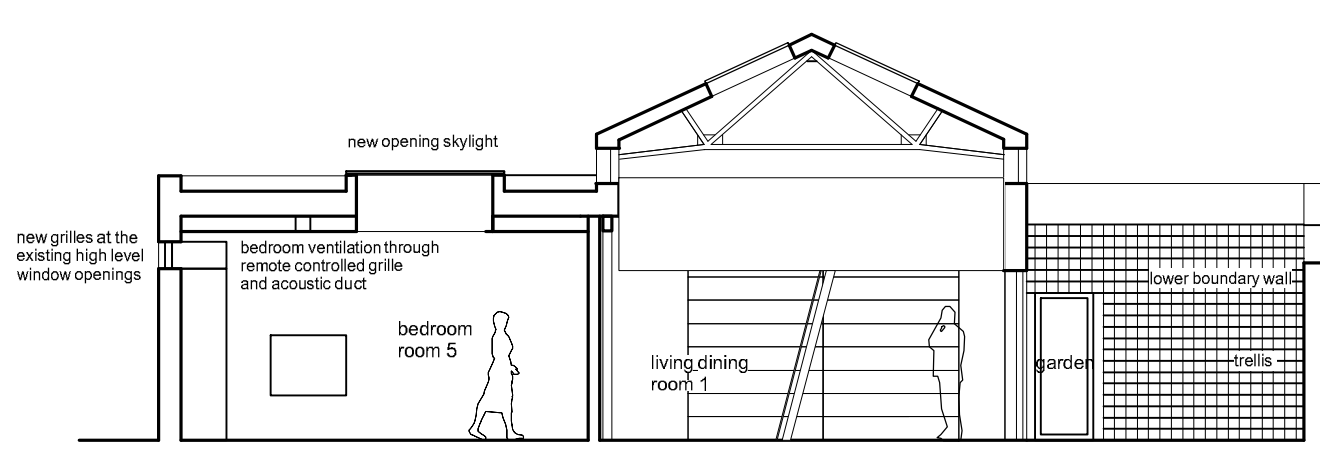


garden
30 Oak Village



section 1



section 2

Gross Internal Areas

Category	Area (m ²)	Area (ft ²)
Existing building		
total	141.20m ²	1519.86ft ²
Proposed 3 bedroom house		
ground floor	83.80m ²	920.00ft ²
mezzanine br	14.70m ²	158.20ft ²
mezzanine st	10.00m ²	107.60ft ²
total	108.50m ²	1167.90ft ²
entrance	7.60m ²	82.00ft ²
garden	20m ²	215.00ft ²

80 Lamble Street, NW5 4AB
conversion to a house and garden
for Sarah Curl
full planning submission
scale 1:100 drawing SC 01 R2
10 February 2017