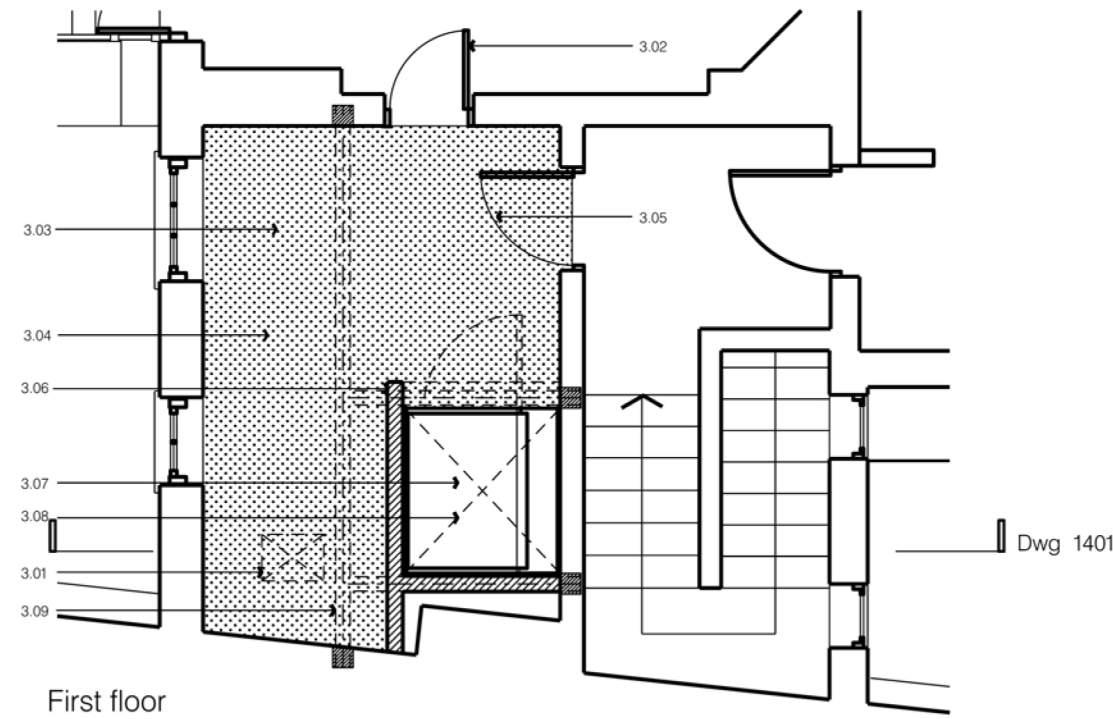


Basement floor

- 1.01 Construct 1:20 ramp to raise lift landing 50mm above existing FFL
- 1.02 High level piped services and soffit over this area to be painted out
- 1.03 Existing door and frame removed and walls made good
- 1.04 Existing door and frame removed and walls made good
- 1.05 New 12hr painted solid core fire door and frame to replace existing
- 1.06 New rubber floor covering (Dalsouple or similar) on levelling screed over hatched area
- 1.07 Existing fair-faced brick work to be painted with emulsion paint within hatched area
- 1.08 Remove existing concrete kerb across threshold
- 1.09 New 1hr painted solid core fire door and frame
- 1.10 New non-load bearing lightweight full height partition forming one side of lift shaft with 1 hr fire resistance
- 1.11 New DDA compliant platform lift and lift enclosure by lift supplier
- 1.12 New 1hr painted solid core fire door and frame with vision panel to replace existing
- 1.13 12hr dry-lined partition

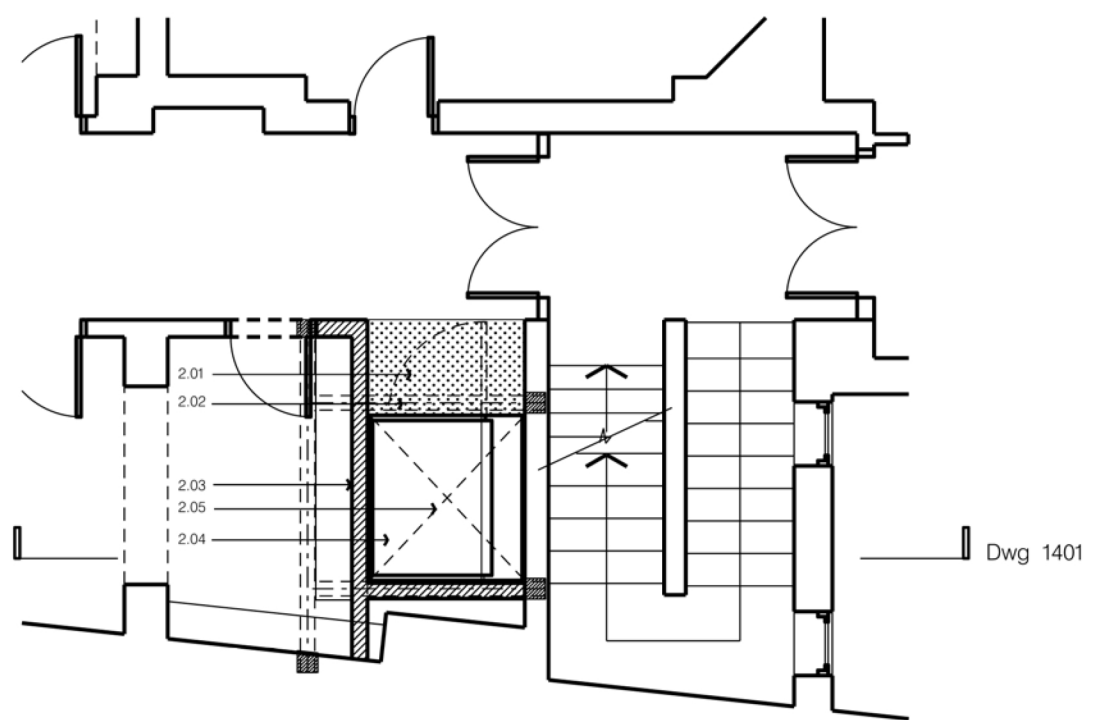
Dwg 1401



First floor

- 3.01 Relocate existing ceiling access hatch to this position
- 3.02 Replace with new 12hr painted solid core fire door and frame with vision panel
- 3.03 New carpet tiles (Heuga or similar) over hatched area
- 3.04 Make good and redecorate walls and ceiling with emulsion paint within hatched area
- 3.05 Replace with 12hr painted solid core fire door and frame
- 3.06 Non-load bearing lightweight full height partition forming one side of lift shaft with 1 hr fire resistance
- 3.07 New DDA compliant platform lift and lift enclosure by Lift supplier
- 3.08 Form new opening approx 1650 x 1500mm through existing concrete floor slab
- 3.09 Steel trimmer beams for new opening in first floor slab to structural engineer's details with 1hr fire protection

Dwg 1401



Ground floor

- 2.01 Make good and redecorate existing walls and ceiling with emulsion paint within hatched area
- 2.02 Make good existing timber boarded floor in this area
- 2.03 Non-load bearing lightweight full height partition forming one side of lift shaft with 1 hr fire resistance
- 2.04 New DDA compliant platform lift and lift enclosure by Lift supplier
- 2.05 Form new opening approx 1650 x 1500mm through existing concrete floor slab
- 2.06 Steel trimmer beams for new opening in ground floor slab to structural engineer's details with 1hr fire protection

Dwg 1401

