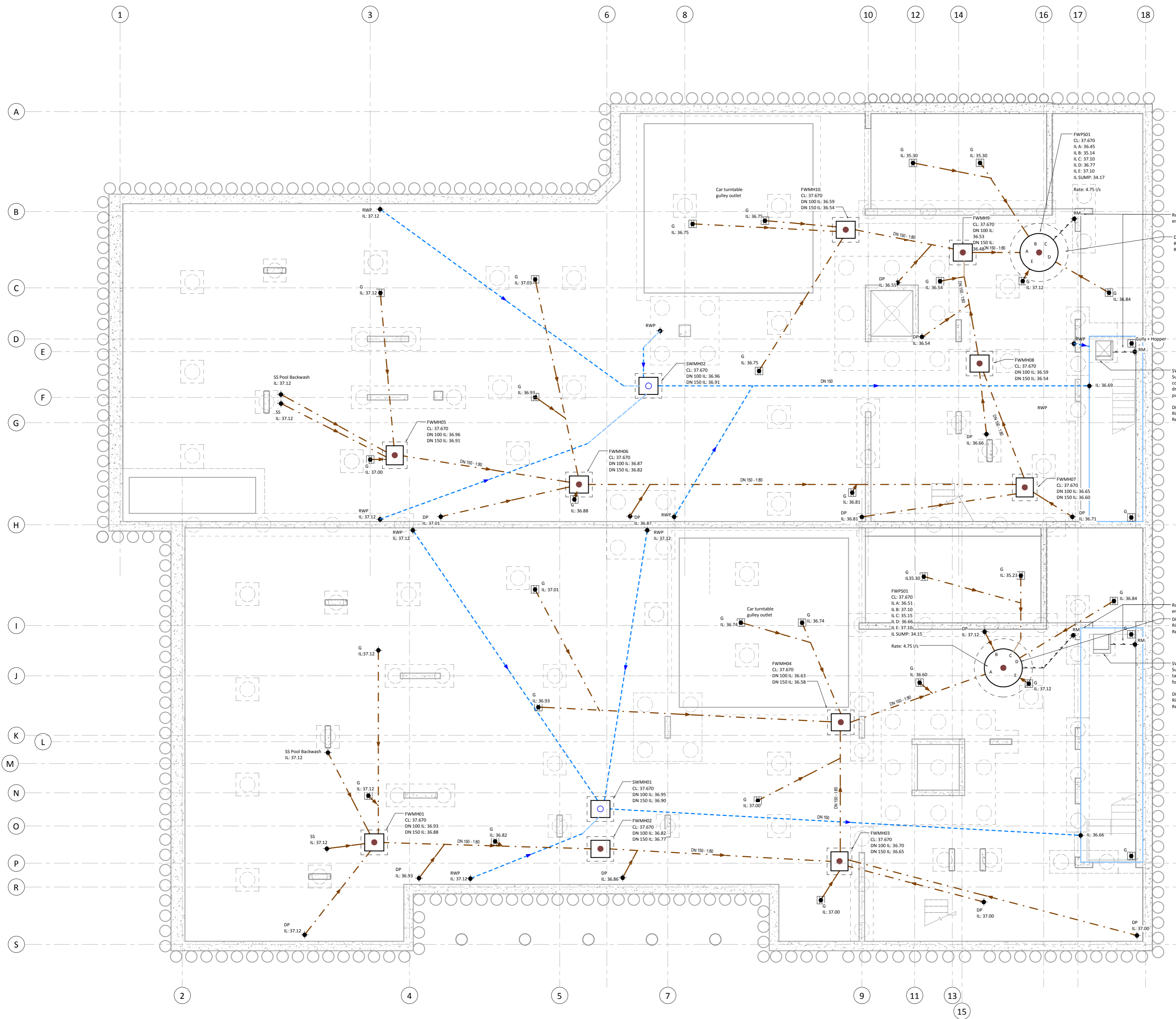
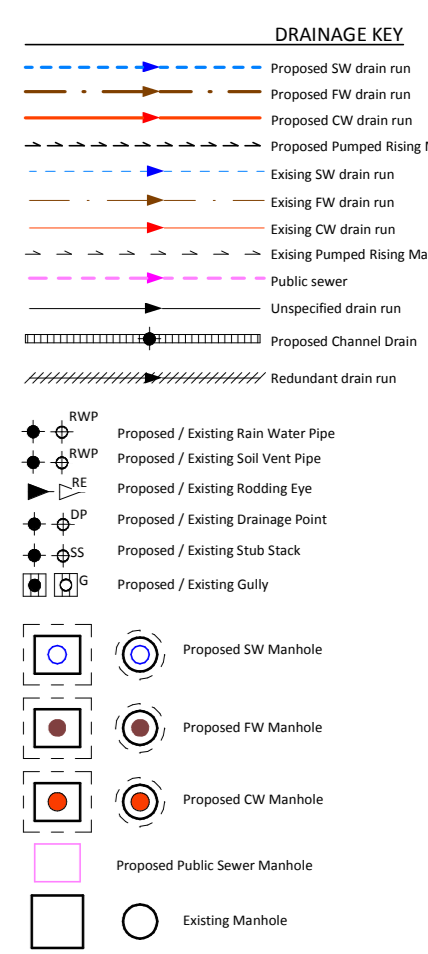


This drawing is to be read in conjunction with all relevant Architects, Engineers and specialists drawings and specifications.

Do not scale from this drawing in either paper or digital form. Use written dimensions only. To check drawing has been printed to the intended scale the above bar should be 100mm long @ A1 or 50mm long @ A3



Route and location of rising mains TBC by M&E engineer.

Discharge rate = TBC
Rising main length = 1.30m
Required head = 10.66m

SWPS01
Surface water pump to be installed within concrete tank chamber. Refer to HTS detail drawing 1247/104 for further information on pump/tank arrangements.
Discharge Rate = 1.00 l/s
Rising main length = 0.9m
Required head = 7.29m

Route and location of rising mains TBC by M&E engineer.

Discharge rate = TBC
Rising main length = 2.44m
Required head = 9.86m

SWPS02
Surface water pump to be installed within concrete tank chamber. Refer to HTS detail drawing 1247/103 for further information on pump/tank arrangements.
Discharge Rate = 1.25 l/s
Rising main length = 0.9m
Required head = 8.24m

No 75
No 73



Job Name
**73 - 75 Avenue Road
NW8 6JD
London**
Drawing Title
**Proposed Basement
Drainage Plan**

T2	03.03.16	TJ	AE	Updated Tender Issue
T1	12.04.16	DP	NC	TENDER ISSUE
Rev	Date	By	Eng	Amendments

Purpose of Issue: **Tender** Scale at A0: **1:50**
Drawing No: **1247/DR010** Rev: **T2**