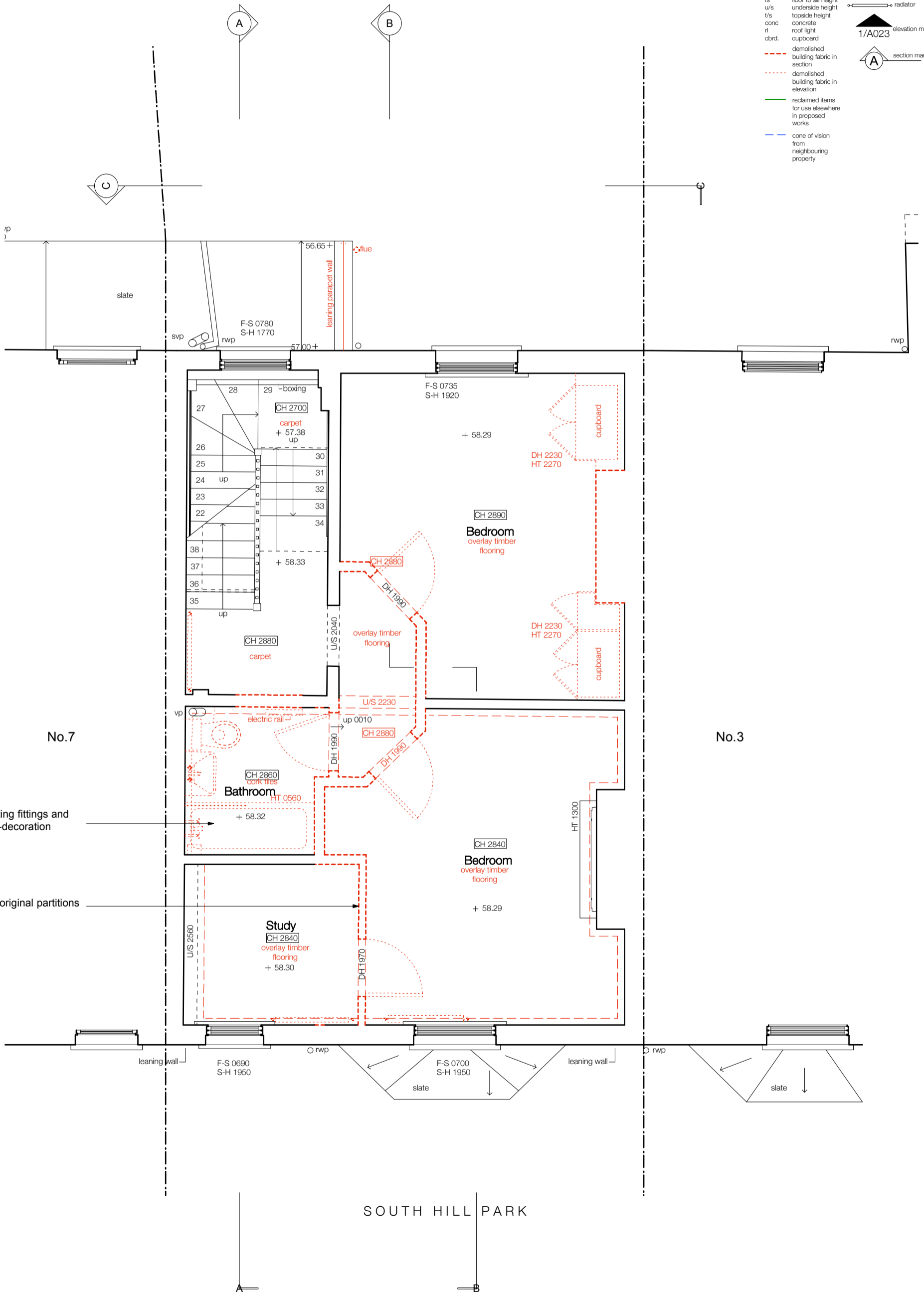


- notes**
- |        |                      |          |                      |
|--------|----------------------|----------|----------------------|
| TOF    | top of fence         | fp       | fireplace            |
| TOW    | top of wall          | svp      | soil and vent pipe   |
| ic     | inspection cover     | rwp      | rain water pipe      |
| cl     | cover level          | fb       | floorboard direction |
| il     | invert level         | DH 1990  | door height          |
| util   | unable to lift       | BH 2000  | beam height          |
| bdg ht | building height      | AH 2500  | arch height          |
| sv     | stop valve           | SPR 1800 | spring point         |
| dp     | depth                | FS 0780  | floor to sill        |
| bt     | telecom              | SH 1850  | sill to head         |
| catv   | cable television     | CH 2520  | room height          |
| sh     | sill to head height  |          |                      |
| fh     | floor to head height |          |                      |
| fs     | floor to sill height |          |                      |
| u/s    | underside height     |          |                      |
| t/s    | topside height       |          |                      |
| conc   | concrete             |          |                      |
| rl     | roof light           |          |                      |
| cbrd.  | cupboard             |          |                      |
- 
- |  |   |  |                  |
|--|---|--|------------------|
|  | demolished building fabric in section               |  | elevation marker |
|  | demolished building fabric in elevation             |  | section marker   |
|  | reclaimed items for use elsewhere in proposed works |  |                  |
|  | cone of vision from neighbouring property           |  |                  |



Strip out existing fittings and fixtures for re-decoration

Strip out non original partitions and lobbies