





Existing brick railway arches

Signage zone - backlit lettering by tenant & metal backpanel painted in dark grey

Metal columns painted in dark grey

Metal profiles painted in dark grey

Metal panels painted in dark grey

Proposed - retail units open

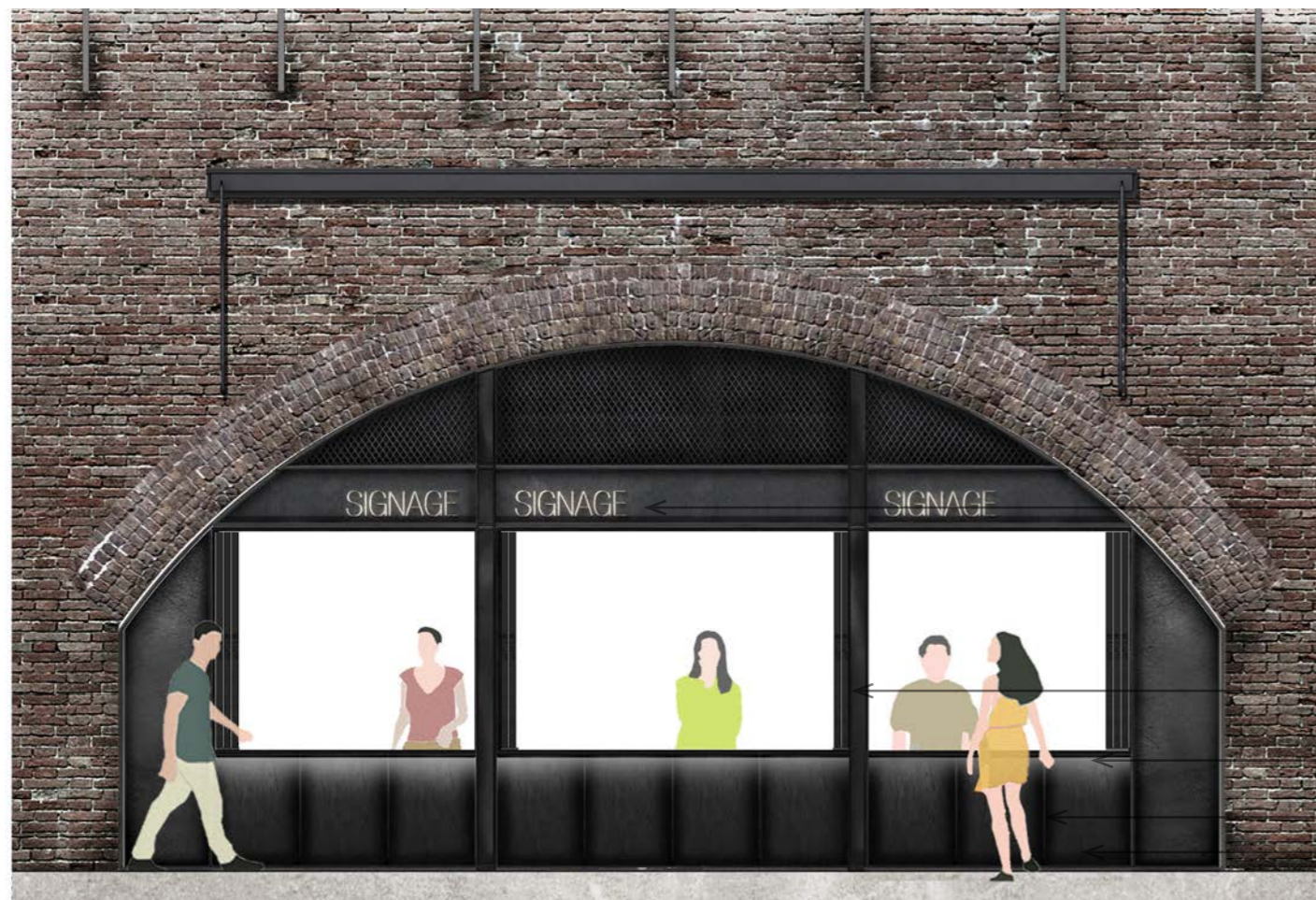


Horizontal fold-out fabric canopy
(open when raining)

Grille provision for future maintenance strategy

Bi-fold metal doors painted in dark grey

Proposed - retail units closed



Existing brick railway arches

Signage zone - backlit lettering by tenant & metal backpanel painted in dark grey

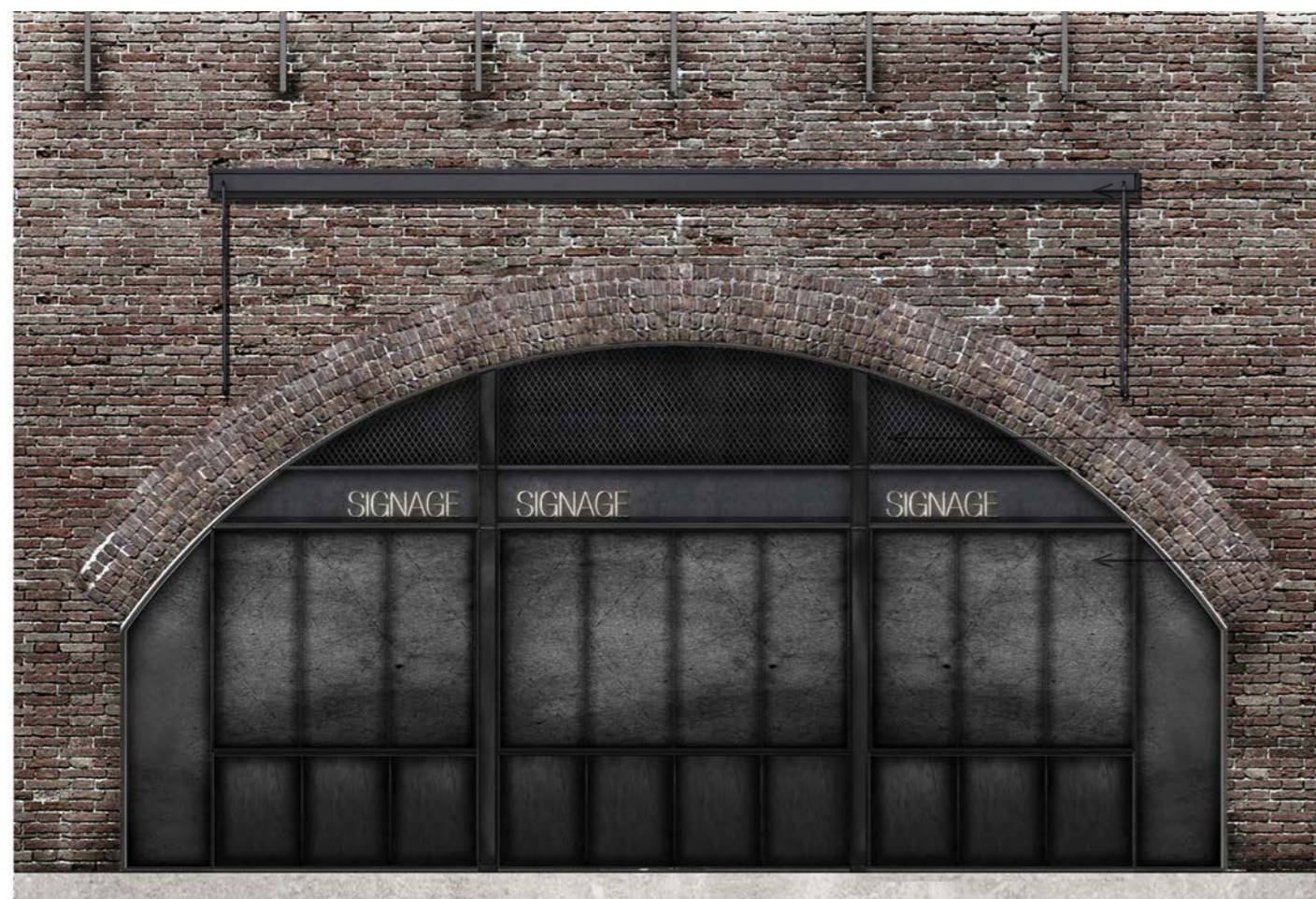
Metal columns painted in dark grey

Concealed strip light

Metal profiles painted in dark grey

Metal panels painted in dark grey

Proposed - food units open

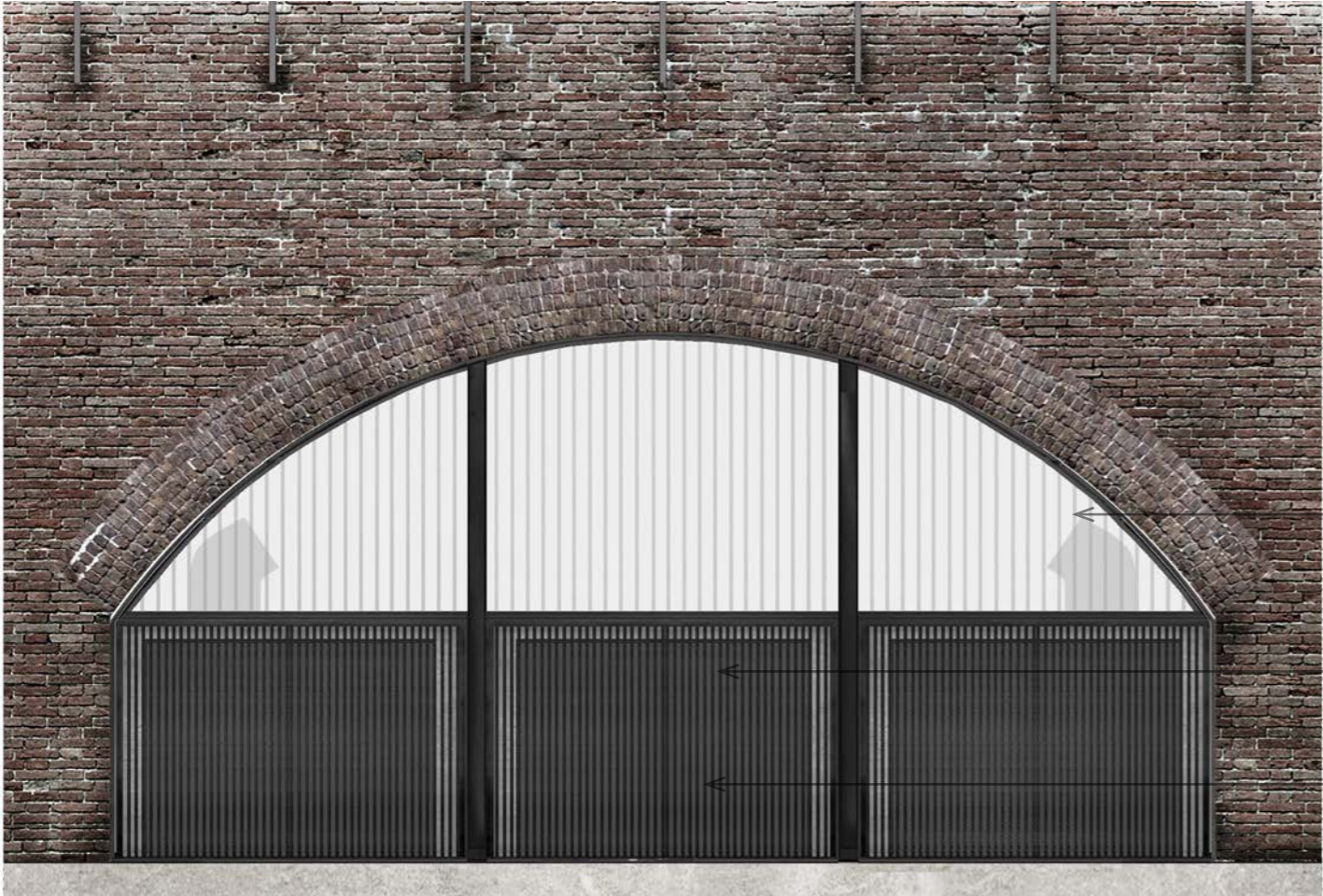


Horizontal fold-out fabric canopy
(open when raining)

Grille provision for future maintenance strategy

Bi-fold horizontal pivot hatch
metal panels painted in dark grey

Proposed - food units closed

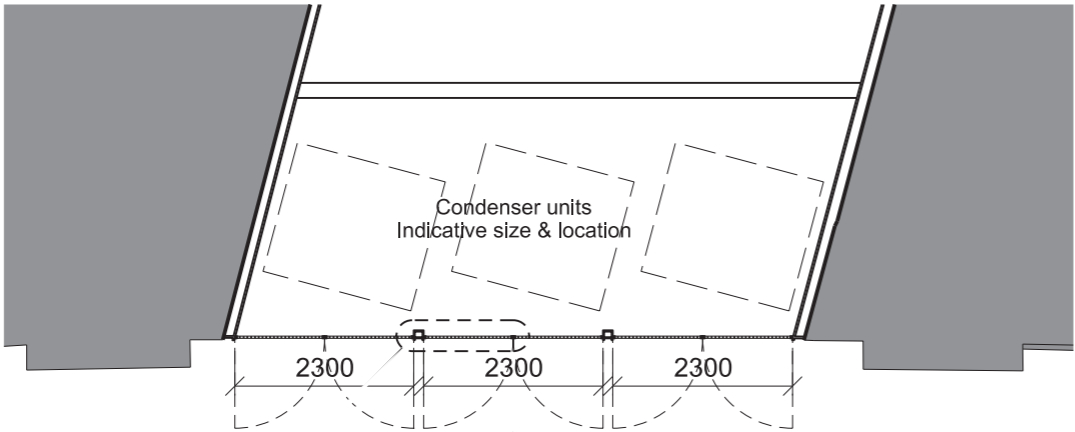


Light density metal louvred upper
vent area for air circulation

Condenser units

Bi-fold metal louvred doors
painted in dark grey

Proposed - Provender Store MEP condensers in Arch 9



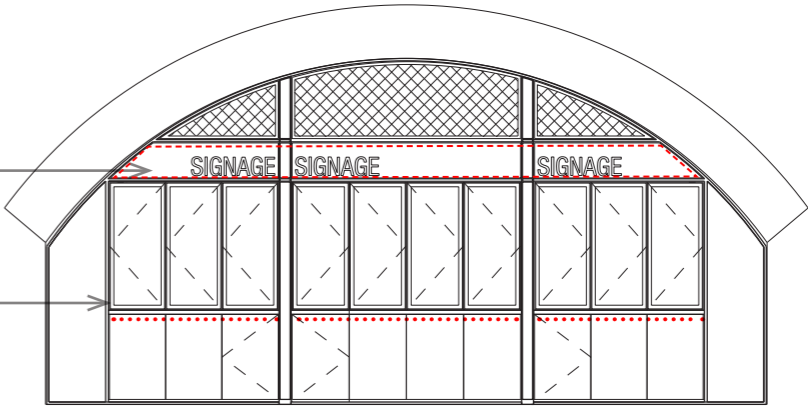
3.7 Signage & external lighting

The signage zone is defined as a horizontal band, continuous throughout all shop fronts. The painted metal backpanel of the signage zone will be provided by the landlord and the backlit lettering by tenants.

There will be a strip light installed under the edge of a counter for A3 frontages and under the bottom edge of a shop front for A1 frontages.

Signage band with metal backpanel
Backlit lettering by tenant

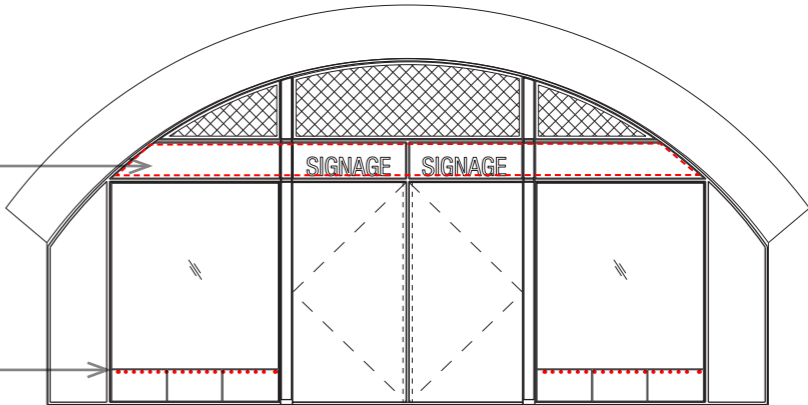
Concealed strip light



Food frontage

Signage band with metal backpanel
Backlit lettering by tenant

Concealed strip light



Retail frontage



Level of the canopies
is indicative
Position subject to
further inspection of
the arches

3.8 Canopy design

Each arch will be equipped with an awning fixed onto the brick face of the viaduct. The awnings will be usually in a closed position and are only meant to be open in an event of rain.

The retractable canopies are based on the traditional Deans Commercial awning system, made from technical fabric, encased in a hardwood box and supported with black iron arms.

3.9 Summary & Conclusions

The proposed design for replacement of the Viaduct Arches shop fronts will have a positive impact on the Regent's Canal Conservation Area and Grade II listed Provender Stores.

The immediate surrounding of the arches is paved with York Stone, along the South face of the viaduct and with cobbles along the North face, part of the setting of the Grade II listed Provender Store. Many of the retailers have installed additional decking on top of the stone paving in front of their units, which often limits accessibility and prevents step-free access.

By removing all of the elements that project beyond the face of the Railway Viaduct, the site's heritage asset is revealed and therefore the industrial character of the Conservation Area is reinforced.

Similarly to Arch 7, which has already been granted planning permission, the scheme will set the tone for the rest of the Stables Market to be redeveloped based on similar design principles, which respect and reinforce the industrial heritage of the site and exhibit its historic assets.