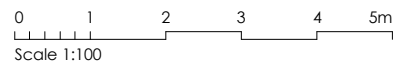
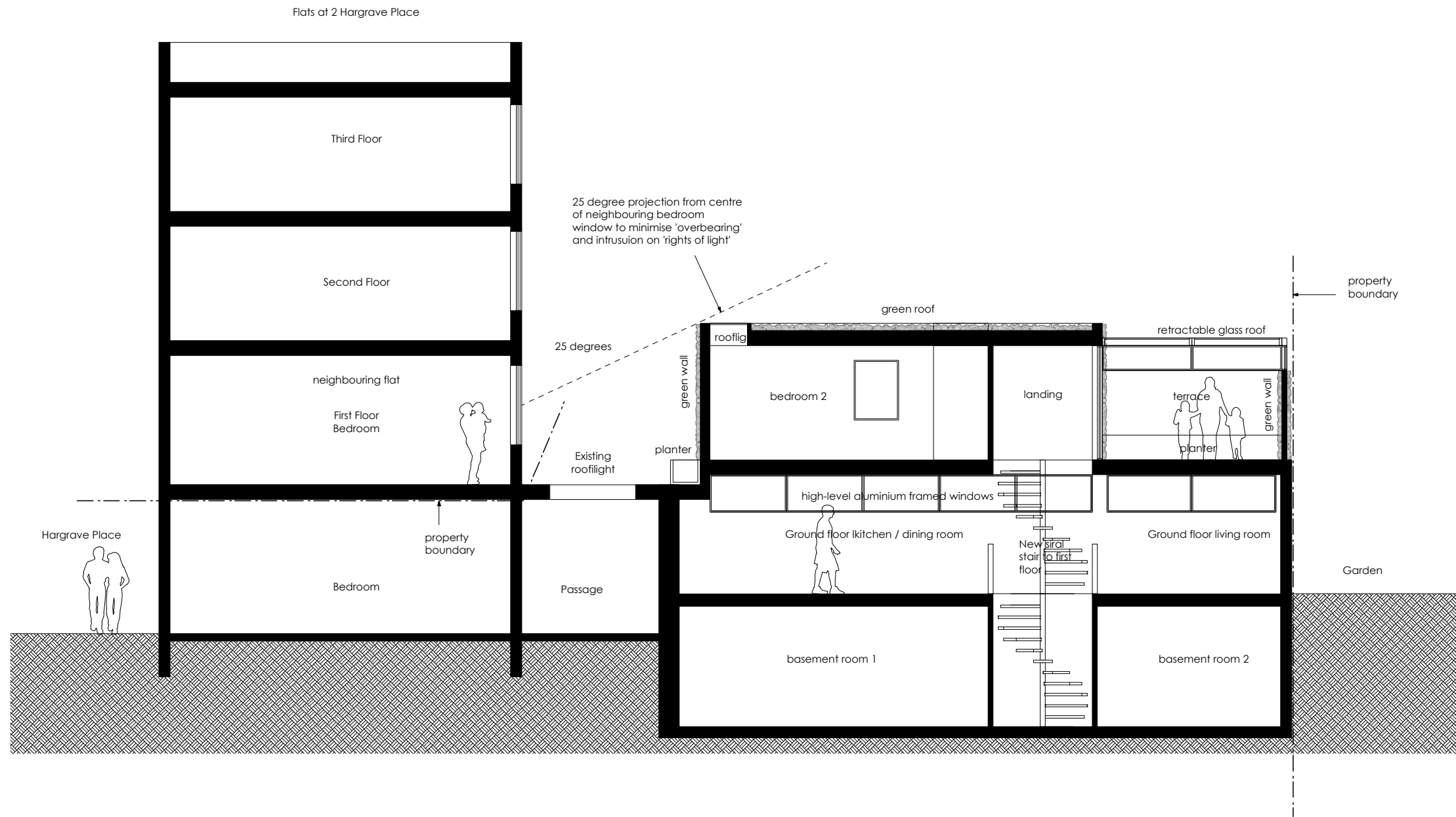


Notes

Dimensions are to be verified on site prior to construction.

Ordnance Survey Data reproduced by permission of Ordnance Survey® on behalf of Her Majesty's Stationery Office. © Crown Copyright. All rights reserved.



Revisions

YY.MM.DD - Description

**Craig More | Architect**

MORE design Ltd 020 7281 7985  
 2 Lambton Mews mail@moredesign.co  
 London N19 3DR www.moredesign.co

2 Hargrave Place N7 0BP  
 Proposed Long Section BB

Scale 1:100  
 Date 17.06  
 Drawing Number 059.121