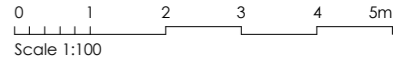
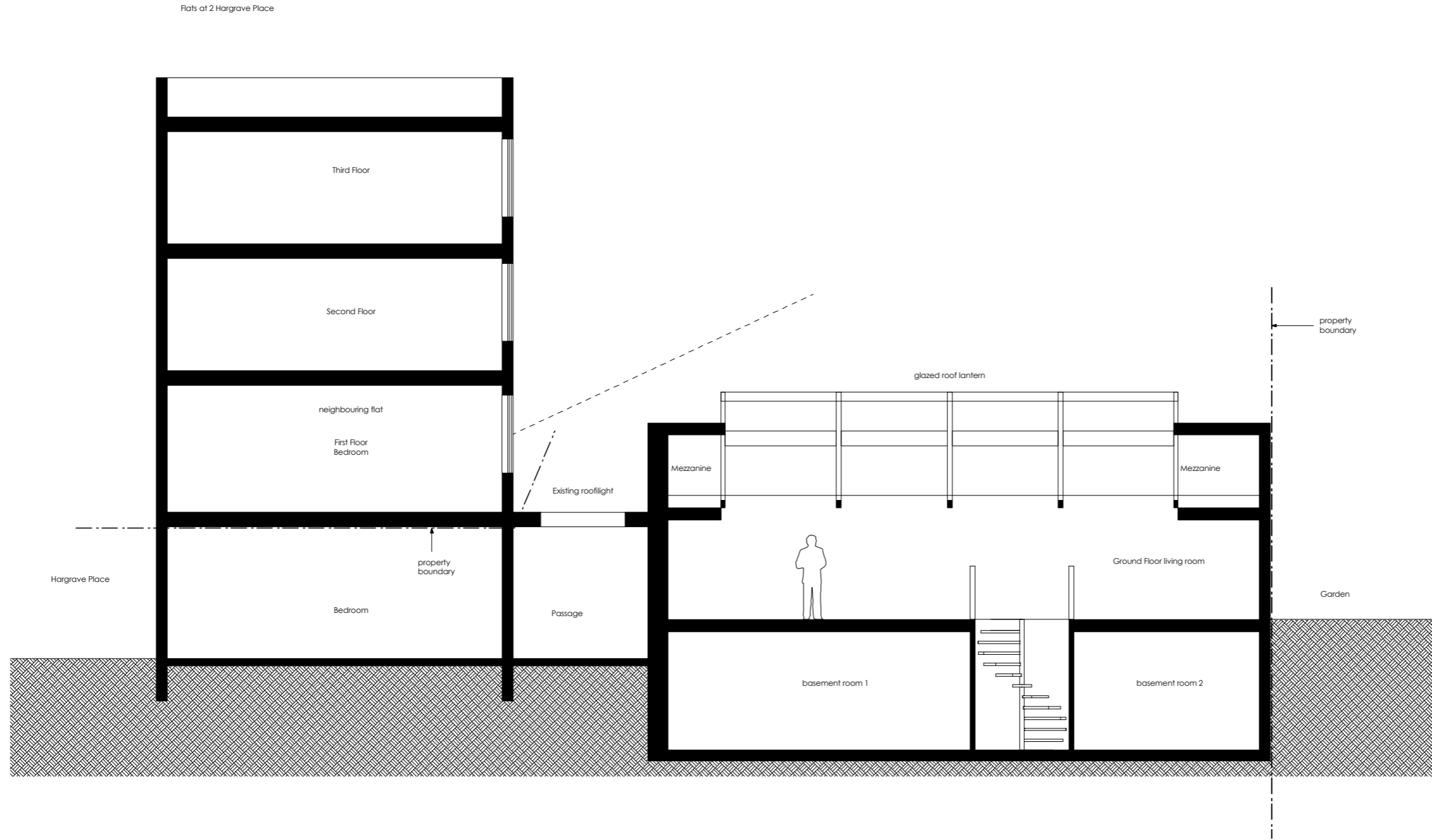


Notes

Dimensions are to be verified on site prior to construction.

Ordnance Survey Data reproduced by permission of Ordnance Survey® on behalf of Her Majesty's Stationery Office. © Crown Copyright. All rights reserved.



Revisions

YY.MM.DD - Description

Craig More | Architect

MORE design Ltd 020 7281 7985
 2 Lambton Mews mail@moredesign.co
 London N19 3DR www.moredesign.co

2 Hargrave Place N7 0BP
 Existing Long Section BB

Scale 1:100
 Date 17.06
 Drawing Number 059.021