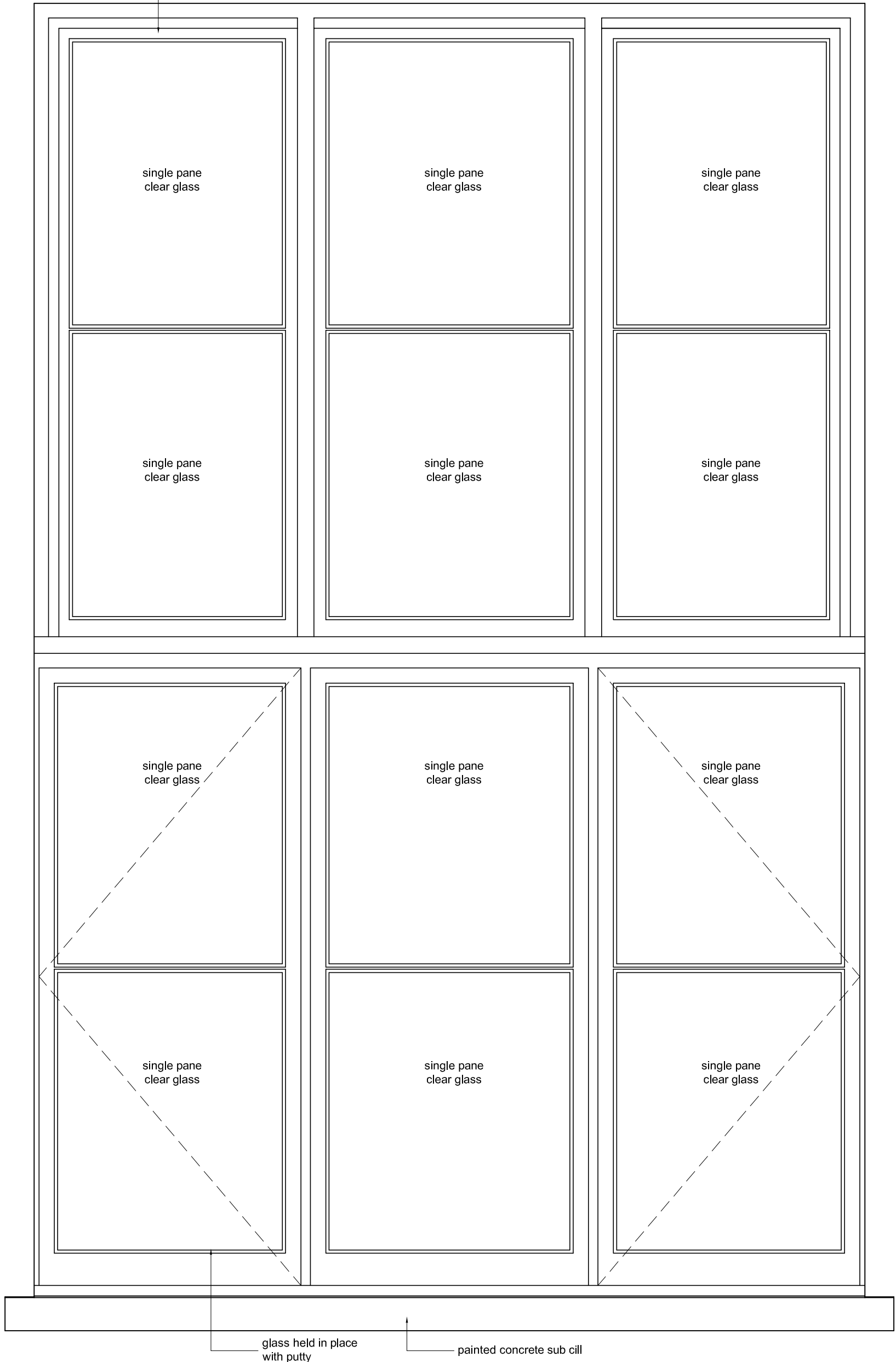


THIS DRAWING IS TO BE READ IN
CONJUNCTION WITH RBD DRAWING
NOS. AR2287/P43

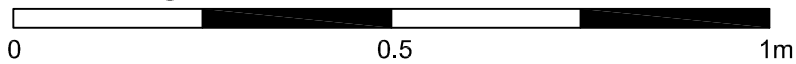
NON-MATERIAL AMENDMENT
(APP NO: 2016/2388/P) JUNE 2017

pointed timber framed window
frame & flush casement



FRONT ELEVATION

Scale 1:10 @ A3



PROJECT

FLAT 4, 1 WOODCHURCH RD
LONDON NW6 3PL

DRAWING TITLE

EXISTING WINDOW DETAILS - W10
(TYPE D) SHEET 1 OF 2

DATE
10.01.16

DRAWN BY
APW

SCALE
1:10

SHEET

DRAWING NO.
AR2287/P33

REVISION

REVISION NOTES

Notes

All dimensions are to be checked on site. Any discrepancies or omissions must be reported to the Architect immediately. This drawing is the property of Realisation by Design Ltd. Copy/right reserved. All dimensions shown are finished dimensions unless stated otherwise.

4 Montpelier Street, London SW7 1EE. Web: www.rbd-design.com
Tel: +44 (0)207 193 7245 Email: office@rbd-design.com

