

R
ROOF LEVEL TOP 77.820
TOS 77.320

15 FIFTEENTH FLOOR FFL 69.030

14 FOURTEENTH FLOOR FFL 65.653

13 THIRTEENTH FLOOR FFL 62.638

12 TWELFTH FLOOR FFL 59.560

11 ELEVENTH FLOOR FFL 56.610

10 TENTH FLOOR FFL 53.640

9 NINTH FLOOR FFL 50.670

8 EIGHTH FLOOR FFL 47.680

7 SEVENTH FLOOR FFL 44.720

6 SIXTH FLOOR FFL 41.750

5 FIFTH FLOOR FFL 38.770

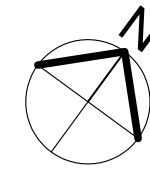
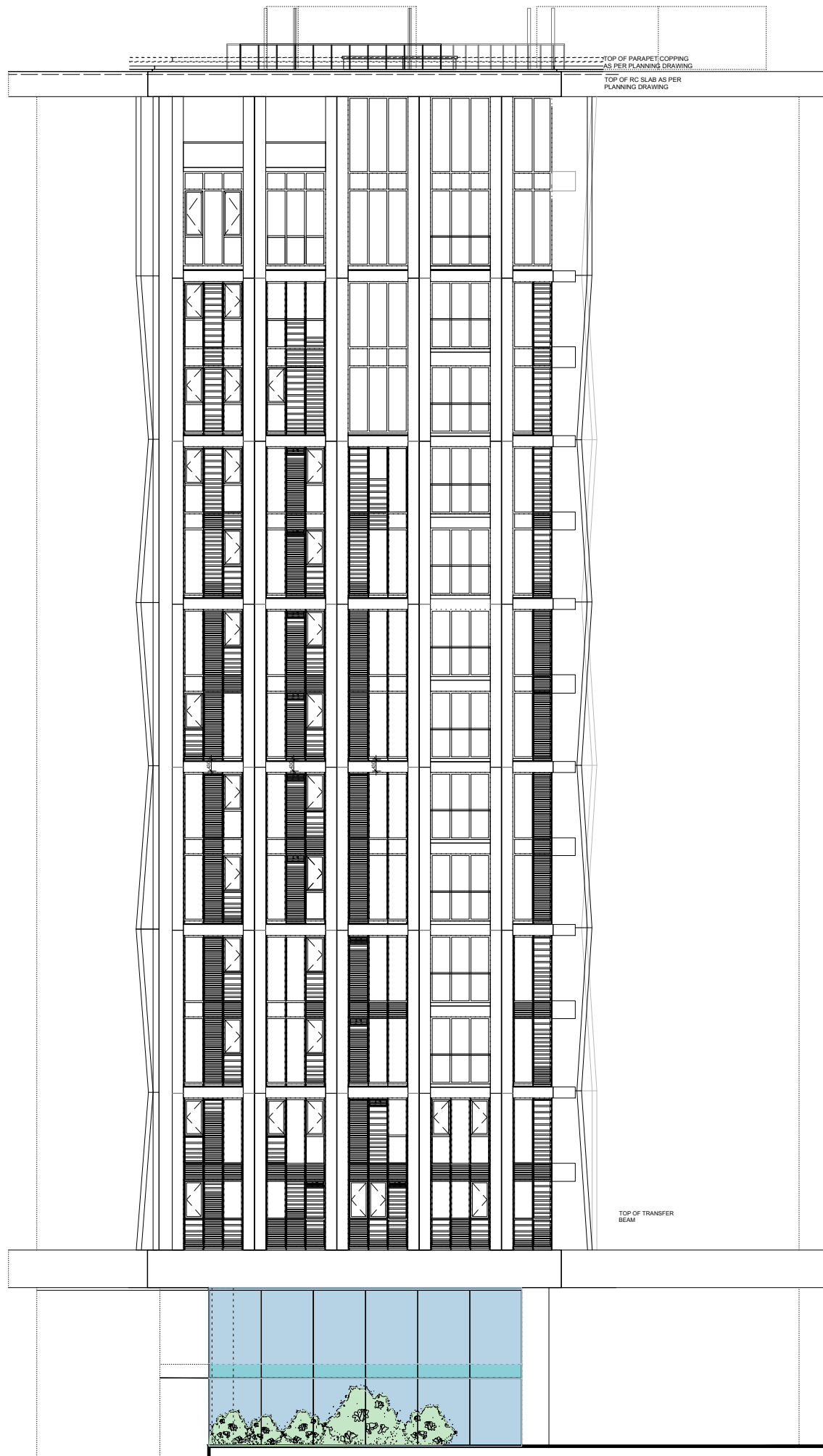
4 FOURTH FLOOR FFL 35.800

3 THIRD FLOOR FFL 32.840

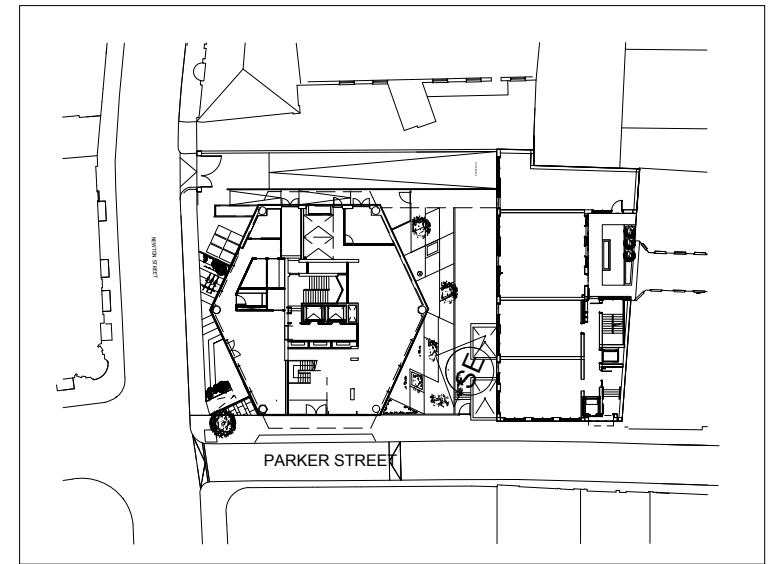
2 SECOND FLOOR FFL 29.870

1 FIRST FLOOR FFL 25.550

G GROUND FLOOR FFL 22.365









NEWTON STREET

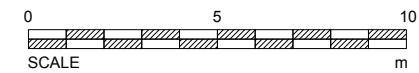


SITE PLAN

KEY:

-  OPAQUE GLAZED WINDOWS
-  RENDERED BLOCKWORK WALL
-  GREEN WALL CONSTRUCTION
-  CLEAR DOUBLE GLAZING IN CURTAIN WALL SYSTEM
-  CURTAIN WALLING WITH OBSCURE CERAMIC GLASS SPANDRELS TO MASK STRUCTURE BEHIND
-  ANODISED ALUMINIUM CLADDING PANELS AS PREVIOUSLY APPROVED

NOTE: ELEVATIONS HAVE BEEN AMENDED TO CORRESPOND WITH THE LATEST PLANS



Client: BNP Paribas		
Job: PARKER TOWER 43-49 Parker St London WC2B 5PS		
Drawing Title.: Proposed South East Elevation		
Issue Date: April 2017	Scale: Scale 1:200 @A3	Drawn:

MOXLEY ARCHITECTS LTD	
47 Clapham High St, London SW4 7TL Tel: 020-7720-8968 Fax: 020-7627-2533 info@moxley.co.uk	
Drwg No.: 768.1-4.006 A	
File Ref.: 769 / Planning	