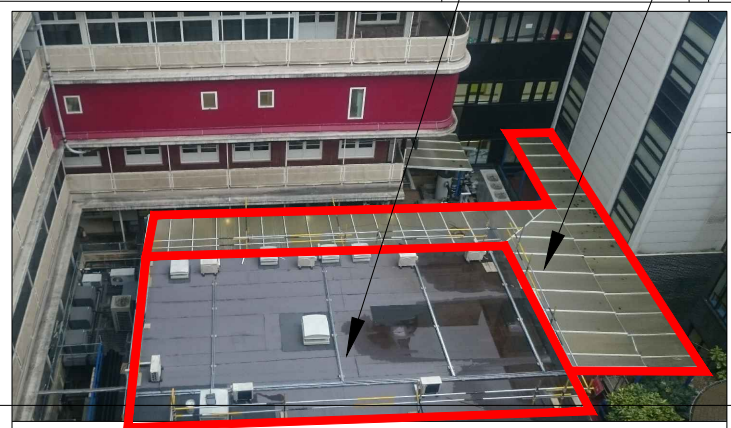
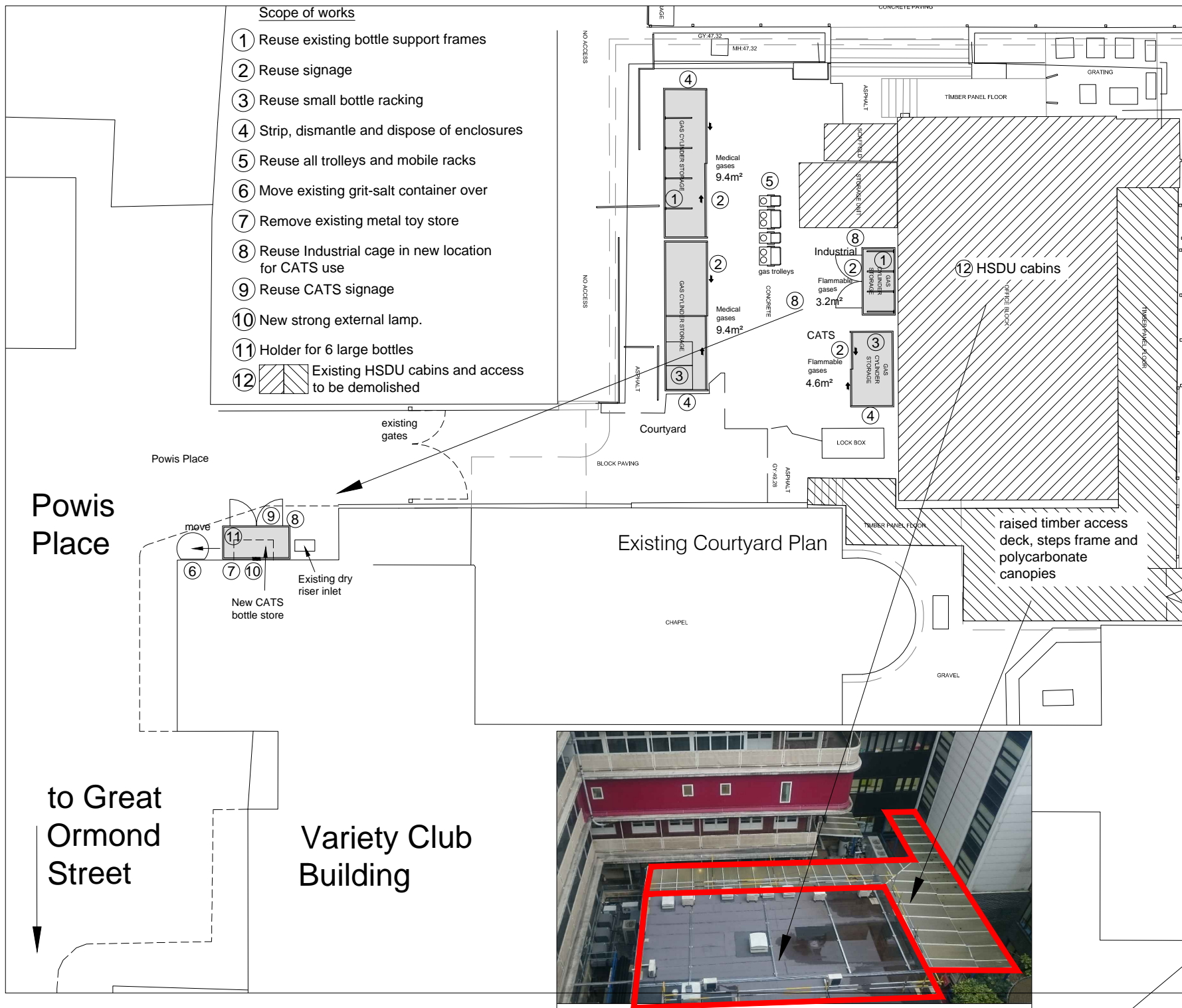
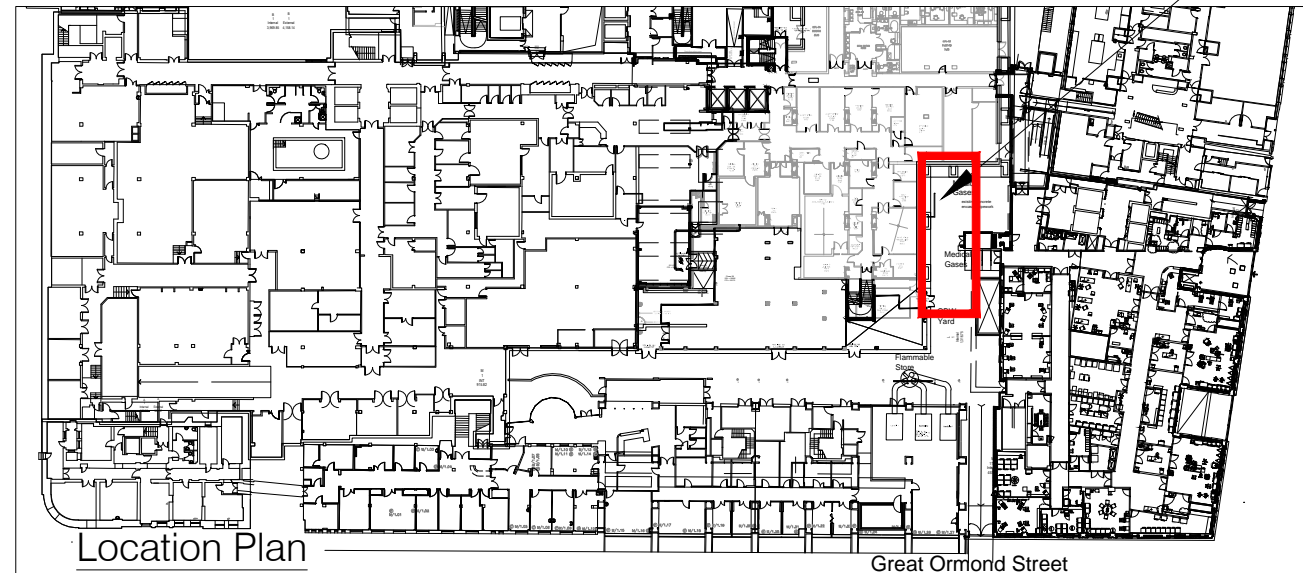


Scope of works

- ① Reuse existing bottle support frames
- ② Reuse signage
- ③ Reuse small bottle racking
- ④ Strip, dismantle and dispose of enclosures
- ⑤ Reuse all trolleys and mobile racks
- ⑥ Move existing grit-salt container over
- ⑦ Remove existing metal toy store
- ⑧ Reuse Industrial cage in new location for CATS use
- ⑨ Reuse CATS signage
- ⑩ New strong external lamp.
- ⑪ Holder for 6 large bottles
- ⑫ Existing HSDU cabins and access to be demolished



Existing Courtyard Plan showing new CATS location



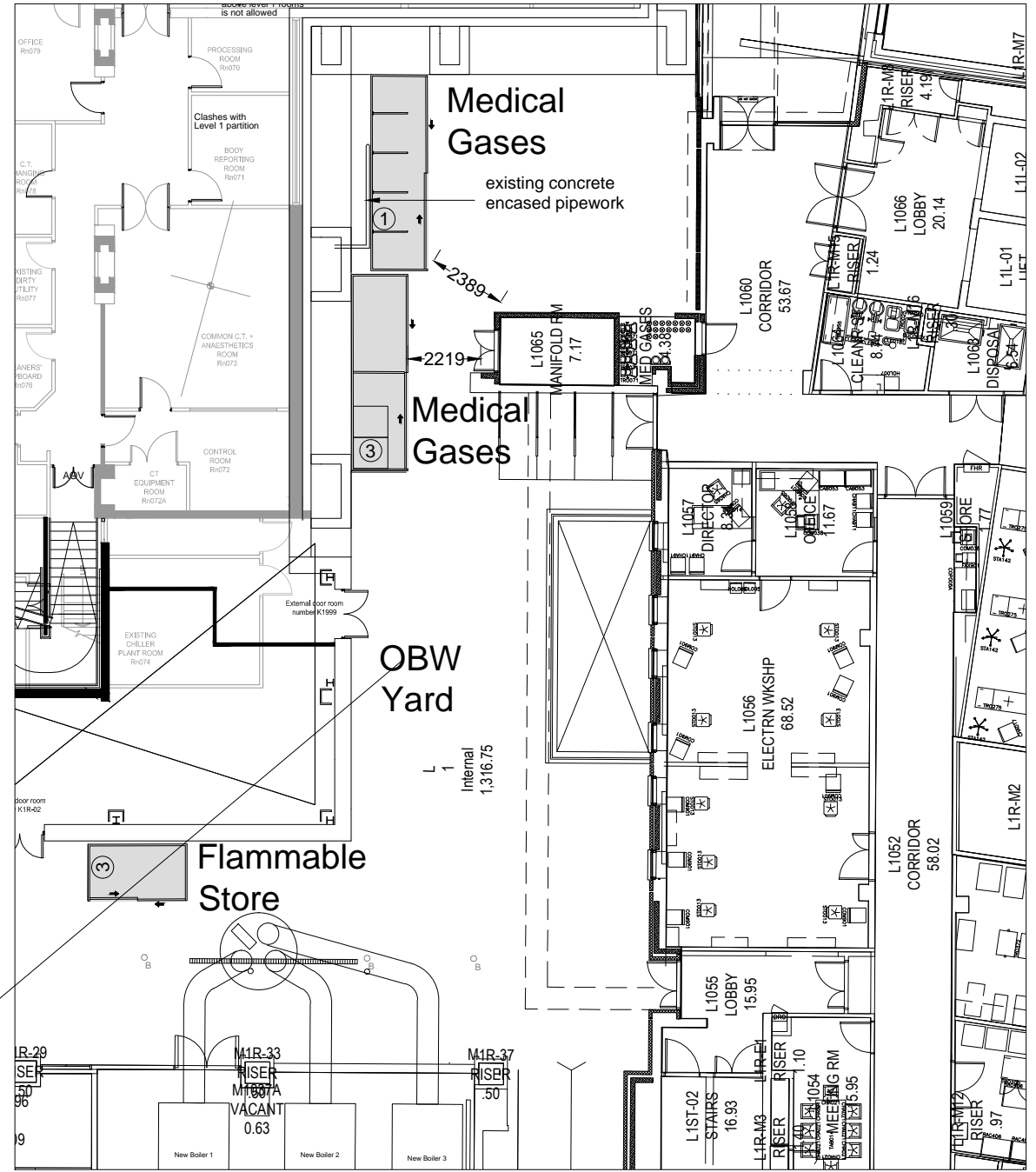
Location Plan

Great Ormond Street

THIS DRAWING IS PROTECTED BY COPYRIGHT - FIGURED DIMENSIONS ONLY TO BE TAKEN FROM THIS DRAWING. DIMENSIONS TO BE CHECKED ON SITE AND ANY DISCREPANCIES REPORTED TO THE ARCHITECT IMMEDIATELY.

PURPOSE OF ISSUE: (A)FOR COMMENT / CO-ORDINATION (B)FOR INFORMATION (C)FOR APPROVAL (D)FOR TENDER (E)FOR CONSTRUCTION (F)FINAL DESIGN DRAWING

Rev	Rev Date	Revision Description	Drawn/Checked	Purpose of Issue
A	06-04-2017	General update		
B	13-04-2017	General update		
C	28-04-2017	Pricing Issue		
D	19-05-2017	For Information		
E	25-05-2017	For Planning		
F	06-06-2017	For Planning		



Level 1 OBW Yard

FOR APPROVAL

Proposed Gas Bottles Relocation Plan Level 1 OBW Yard - Option 4	16021 JOB NUMBER	(09)011 DRAWING NUMBER	F REV
Great Ormond Street Hospital for Children - NHS Foundation Trust	Mar 2017 DATE	1:100@A1 SCALE	

Ansell & Bailey LLP Chartered Architects 24-32 Stephenson Way London NW1 2HD 020 7387 0141 architects@ansellandbailey.com