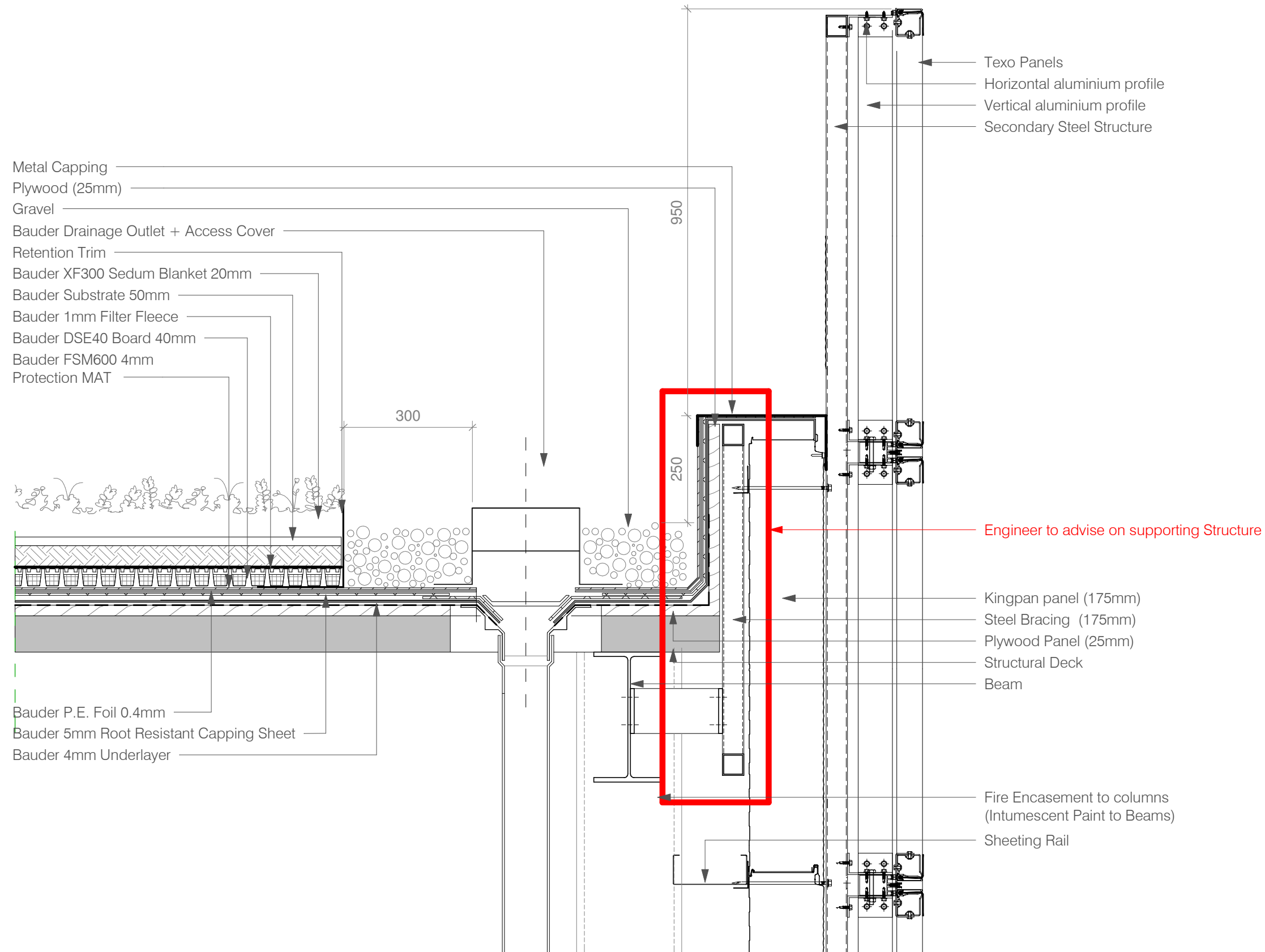


THIS DRAWING IS PROTECTED BY COPYRIGHT - FIGURED DIMENSIONS ONLY TO BE TAKEN FROM THIS DRAWING. DIMENSIONS TO BE CHECKED ON SITE AND ANY DISCREPANCIES REPORTED TO THE ARCHITECT IMMEDIATELY.

PURPOSE OF ISSUE - A = FOR COMMENT/ CO-ORDINATION B = FOR INFORMATION C = FOR APPROVAL D = FOR TENDER E = FOR CONSTRUCTION F = FINAL DESIGN DRAWING

Rev	Rev Date	Revision Description	Drawn/Checked	Purpose of Issue



Parapet and Guarding Detail	16021	(04)009	REV
Great Ormond Street Hospital for Children - NHS Foundation Trust	05/15/17	1 : 10	SCALE @ A3

Ansell & Bailey LLP Chartered Architects, 24-32 Stephenson Way, London, NW1 2HD, 020 73870141, architects@ansellandbailey.com