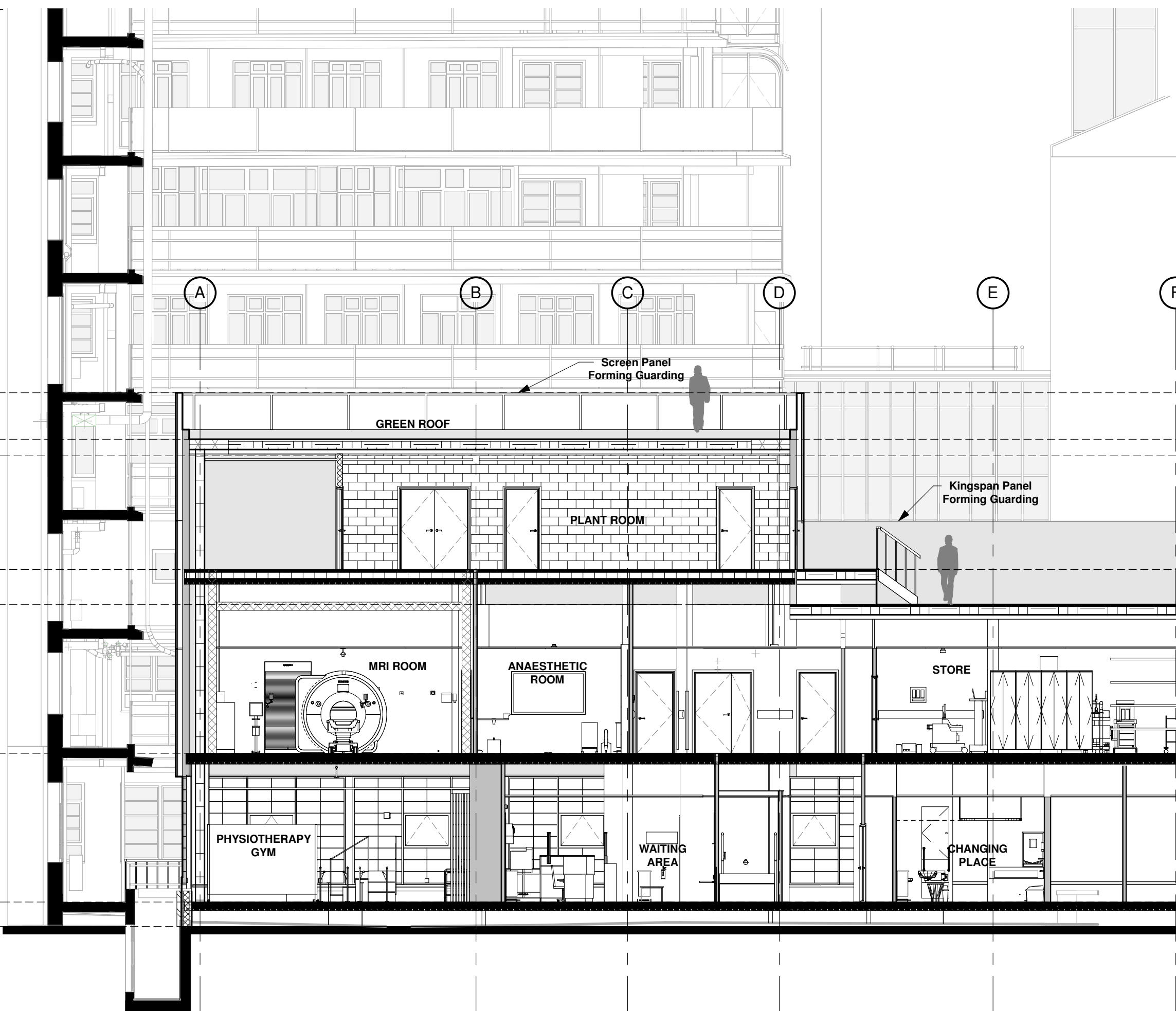
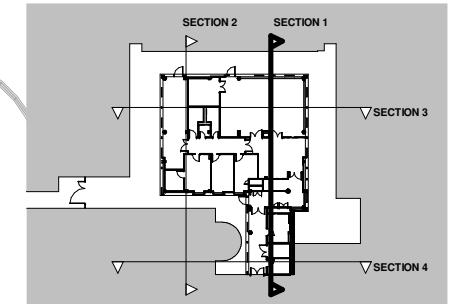
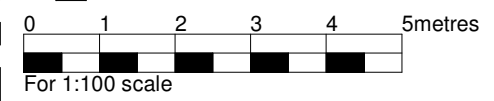


THIS DRAWING IS PROTECTED BY COPYRIGHT - FIGURED DIMENSIONS ONLY TO BE TAKEN FROM THIS DRAWING. DIMENSIONS TO BE CHECKED ON SITE AND ANY DISCREPANCIES REPORTED TO THE ARCHITECT IMMEDIATELY.
 PURPOSE OF ISSUE - A = FOR COMMENT/ CO-ORDINATION B = FOR INFORMATION C = FOR APPROVAL D = FOR TENDER E = FOR CONSTRUCTION F = FINAL DESIGN DRAWING

Rev	Rev Date	Revision Description	Drawn/Checked	Purpose of Issue
A	07/04/2017	General Update	VS/MH	A
B	13/04/2017	General Update	VS/MH	A
C	28/04/2017	Pricing Issue	VS/MH	P
D	12/05/2017	For Planning	VS/MH	C
E	25/05/2017	For Planning	VS/MH	P
F	06/06/2017	For Planning	VS/MH	P



- Top Parapet 36.69 m
- Level Roof 35.49 m
- VCB Floor Level 05 35.06 m
- Level 04A 32.14 m
- Level 04 31.24 m
- Level 03 27.41 m
- Level 02 23.59 m
- Level Courtyard 22.96 m



FOR APPROVAL

For Section Lines See Drawing 16021(01)029 - Proposed Level 02 (Ground Floor) Plan showing surrounding clinical uses

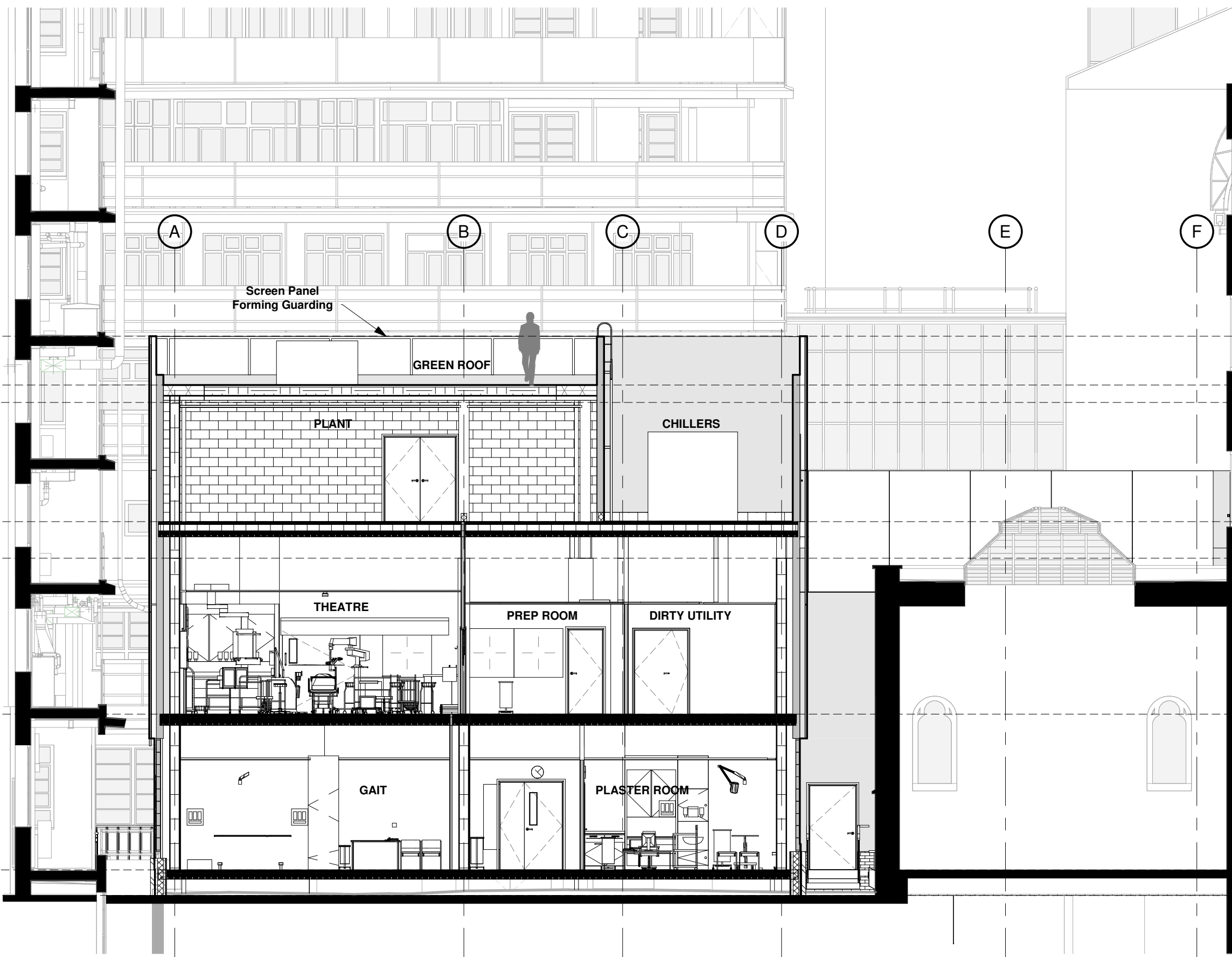
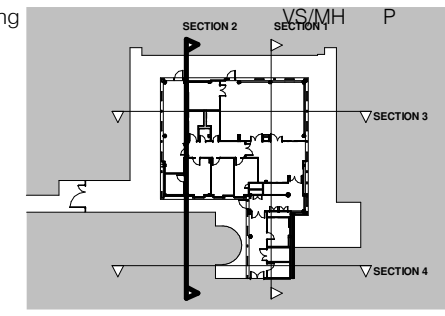
Proposed Section 1	16021	(03)006	F
	JOB NUMBER	DRAWING NUMBER	REV
Great Ormond Street Hospital for Children - NHS Foundation Trust	27/03/2017	As indicated	
	DATE	SCALE @ A3	

Ansell & Bailey LLP Chartered Architects. 24-32 Stephenson Way, London, NW1 2HD. 020 73870141. architects@ansellandbailey.com

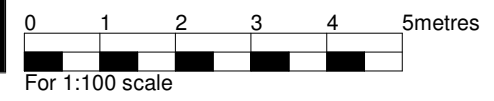
ANSELL + BAILEY

THIS DRAWING IS PROTECTED BY COPYRIGHT - FIGURED DIMENSIONS ONLY TO BE TAKEN FROM THIS DRAWING. DIMENSIONS TO BE CHECKED ON SITE AND ANY DISCREPANCIES REPORTED TO THE ARCHITECT IMMEDIATELY.
 PURPOSE OF ISSUE - A = FOR COMMENT/ CO-ORDINATION B = FOR INFORMATION C = FOR APPROVAL D = FOR TENDER E = FOR CONSTRUCTION F = FINAL DESIGN DRAWING

Rev	Rev Date	Revision Description	Drawn/Checked	Purpose of Issue
A	07/04/2017	General Update	VS/MH	A
B	13/04/2017	General Update	VS/MH	A
C	28/04/2017	Pricing Issue	VS/MH	P
D	12/05/2017	For Planning	VS/MH	C
E	25/05/2017	For Planning	VS/MH	P
F	06/06/2017	For Planning	VS/MH	P



- Top Parapet 36.69 m
- Level Roof 35.49 m
- VCB Floor Level 05 35.06 m
- Level 04A 32.14 m
- Level 04 31.24 m
- Level 03 27.41 m
- Level 02 23.59 m
- Level Courtyard 22.96 m



FOR APPROVAL

For Section Lines See Drawing 16021(01)029 - Proposed Level 02 (Ground Floor) Plan showing surrounding clinical uses

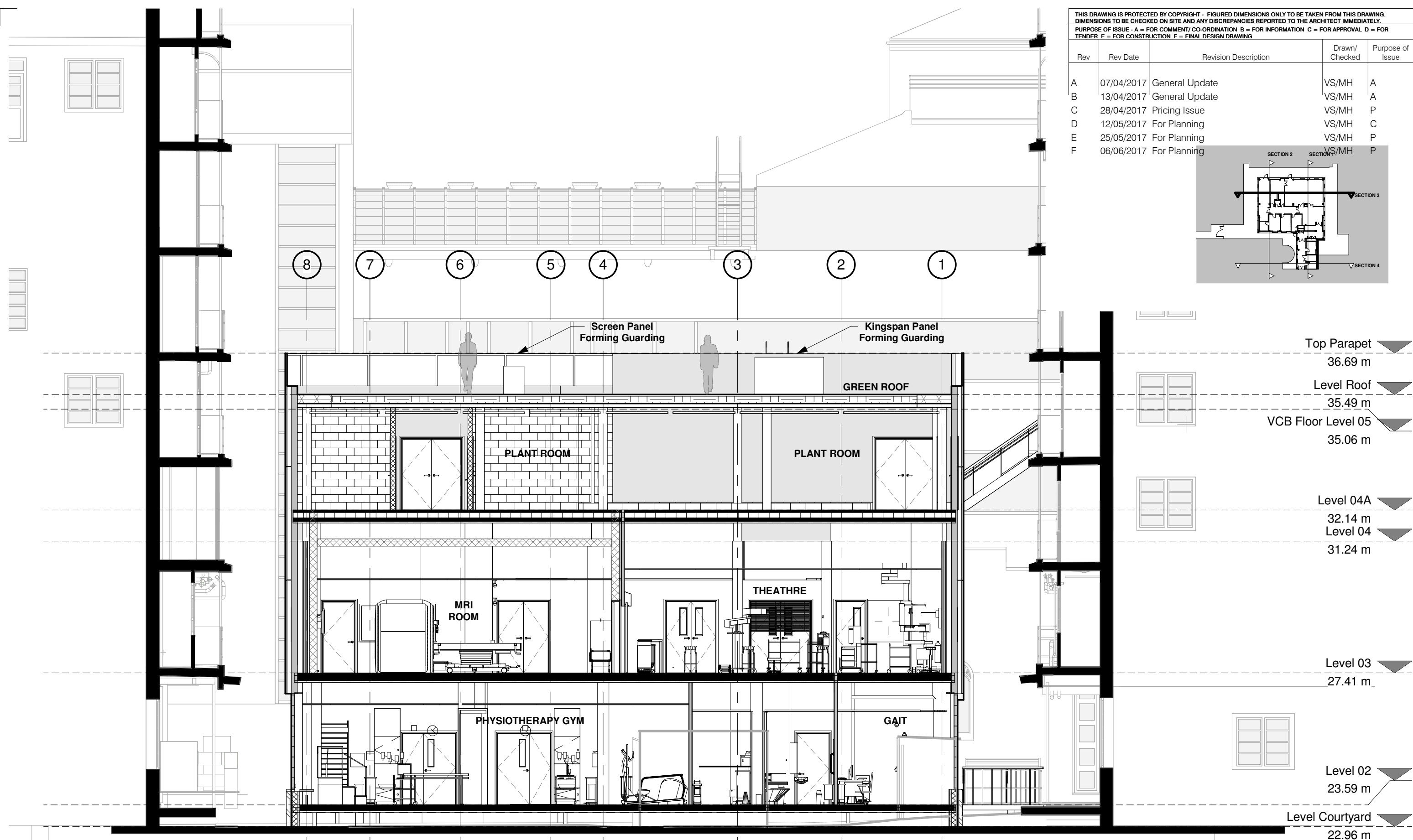
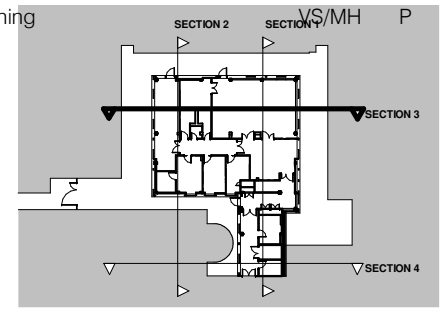
Proposed Section 2	16021	(03)007	F
	JOB NUMBER	DRAWING NUMBER	REV
Great Ormond Street Hospital for Children - NHS Foundation Trust	27/03/2017	As indicated	
	DATE	SCALE @ A3	

Ansell & Bailey LLP Chartered Architects, 24-32 Stephenson Way, London, NW1 2HD, 020 73870141, architects@ansellandbailey.com

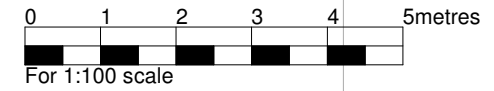
ANSELL + BAILEY

THIS DRAWING IS PROTECTED BY COPYRIGHT - FIGURED DIMENSIONS ONLY TO BE TAKEN FROM THIS DRAWING. DIMENSIONS TO BE CHECKED ON SITE AND ANY DISCREPANCIES REPORTED TO THE ARCHITECT IMMEDIATELY.
 PURPOSE OF ISSUE - A = FOR COMMENT/ CO-ORDINATION B = FOR INFORMATION C = FOR APPROVAL D = FOR TENDER E = FOR CONSTRUCTION F = FINAL DESIGN DRAWING

Rev	Rev Date	Revision Description	Drawn/Checked	Purpose of Issue
A	07/04/2017	General Update	VS/MH	A
B	13/04/2017	General Update	VS/MH	A
C	28/04/2017	Pricing Issue	VS/MH	P
D	12/05/2017	For Planning	VS/MH	C
E	25/05/2017	For Planning	VS/MH	P
F	06/06/2017	For Planning	VS/MH	P



- Top Parapet ▼ 36.69 m
- Level Roof ▼ 35.49 m
- VCB Floor Level 05 ▼ 35.06 m
- Level 04A ▼ 32.14 m
- Level 04 ▼ 31.24 m
- Level 03 ▼ 27.41 m
- Level 02 ▼ 23.59 m
- Level Courtyard ▼ 22.96 m



FOR APPROVAL

Proposed Section 3	16021	(03)008	F
	JOB NUMBER	DRAWING NUMBER	REV
Great Ormond Street Hospital for Children - NHS Foundation Trust	27/03/2017	As indicated	
	DATE	SCALE @ A3	

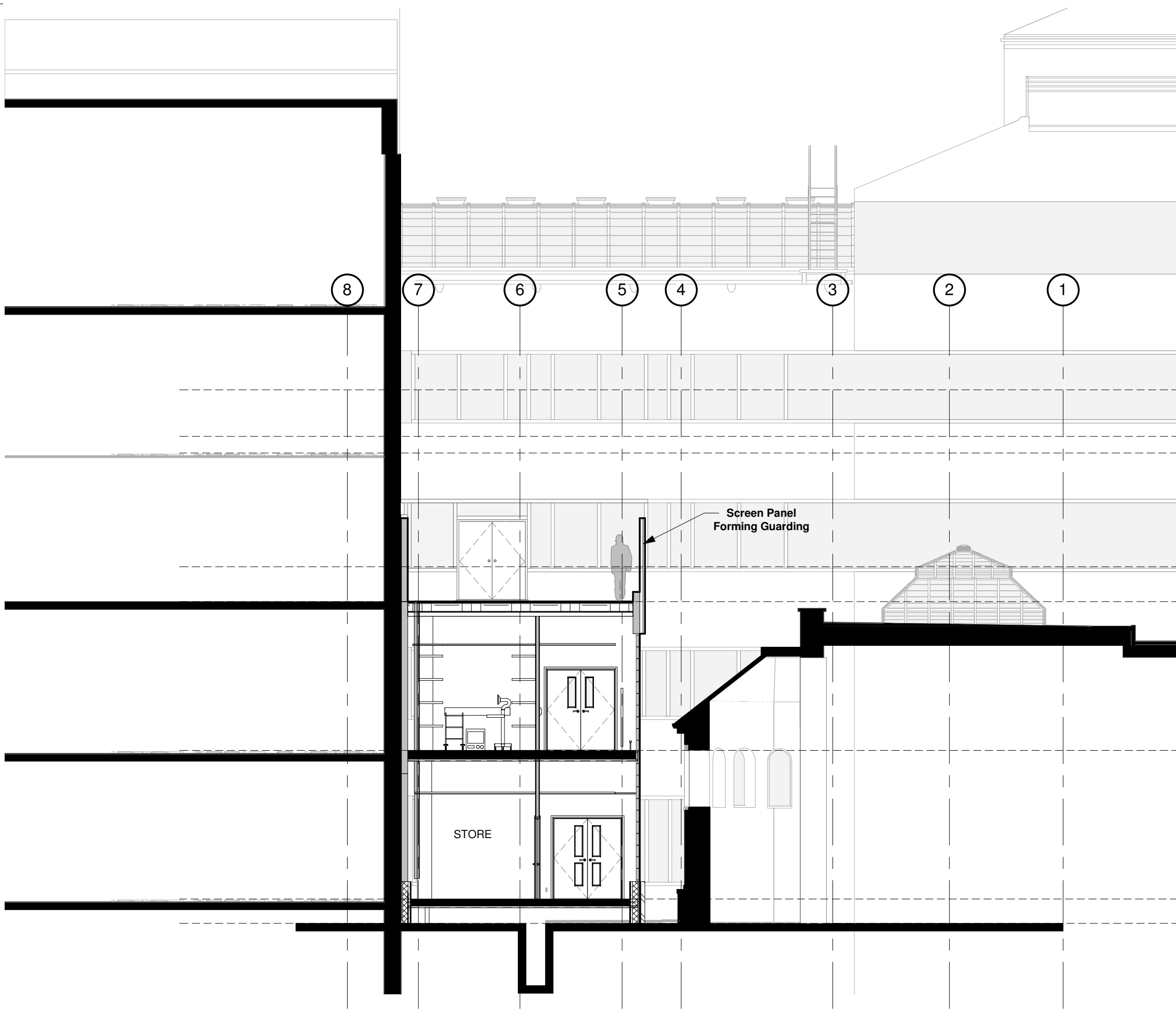
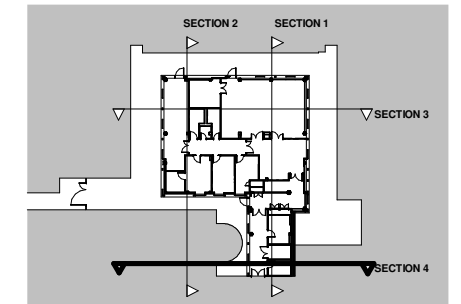
Ansell & Bailey LLP Chartered Architects, 24-32 Stephenson Way, London, NW1 2HD, 020 73870141, architects@ansellandbailey.com

For Section Lines See Drawing 16021(01)029 - Proposed Level 02 (Ground Floor) Plan showing surrounding clinical uses

ANSELL + BAILEY

THIS DRAWING IS PROTECTED BY COPYRIGHT - FIGURED DIMENSIONS ONLY TO BE TAKEN FROM THIS DRAWING. DIMENSIONS TO BE CHECKED ON SITE AND ANY DISCREPANCIES REPORTED TO THE ARCHITECT IMMEDIATELY.
 PURPOSE OF ISSUE - A = FOR COMMENT/ CO-ORDINATION B = FOR INFORMATION C = FOR APPROVAL D = FOR TENDER E = FOR CONSTRUCTION F = FINAL DESIGN DRAWING

Rev	Rev Date	Revision Description	Drawn/Checked	Purpose of Issue
A	07/04/2017	General Update	VS/MH	A
B	13/04/2017	General Update	VS/MH	A
C	28/04/2017	Pricing Issue	VS/MH	P
D	12/05/2017	For Planning	VS/MH	C
E	25/05/2017	For Planning	VS/MH	P



- Top Parapet 36.69 m
- Level Roof 35.49 m
- VCB Floor Level 05 35.06 m
- Level 04A 32.14 m
- Level 04 31.24 m
- Level 03 27.41 m
- Level 02 23.59 m
- Level Courtyard 22.96 m



Proposed Section 4		16021	(03)009	E
		JOB NUMBER	DRAWING NUMBER	REV
Great Ormond Street Hospital for Children - NHS Foundation Trust		27/03/2017	As indicated	
		DATE	SCALE @ A3	

For Section Lines See Drawing 16021(01)029 - Proposed Level 02 (Ground Floor) Plan showing surrounding clinical uses