

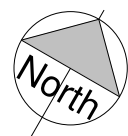
THIS DRAWING IS PROTECTED BY COPYRIGHT - FIGURED DIMENSIONS ONLY TO BE TAKEN FROM THIS DRAWING. DIMENSIONS TO BE CHECKED ON SITE AND ANY DISCREPANCIES REPORTED TO THE ARCHITECT IMMEDIATELY.
 PURPOSE OF ISSUE - A = FOR COMMENT/ CO-ORDINATION B = FOR INFORMATION C = FOR APPROVAL D = FOR TENDER
 E = FOR CONSTRUCTION F = FINAL DESIGN DRAWING

Rev	Rev Date	Revision Description	Drawn/Checked	Purpose of Issue
A	22/03/2017	General Update	VS/MH	C
B	31/03/2017	General Update	VS/MH	C
C	06/04/2017	Colour Added	VS/MH	A
D	13/04/2017	General Update	VS/MH	A
E	28/04/2017	Pricing Issue	VS/MH	P
F	12/05/2017	For Planning	VS/MH	C
G	25/05/2017	For Planning	VS/MH	P
H	06/06/2017	For Planning	VS/MH	P

KEY

- ① New Galvanised steel gates
- ② New Galvanised steel ramps and balustrades
- ③ New Galvanised steel maintenance stair
- ④ New Galvanised steel bridge link
- ⑤ New Galvanised steel platform and stairs with BigFoot support
- ⑥ New Galvanised steel roof access ladder
- ⑦ Existing Tarmac surface
- ⑧ Existing Stone walkway
- ⑨ Existing concrete balcony
- ⑩ New 450 x 450 paving slabs with gravel border
- ⑪ New green roof with gravel border
- ⑫ New Galvanised steel guarding

0 1 2 3 4 5metres
 For 1:100 scale



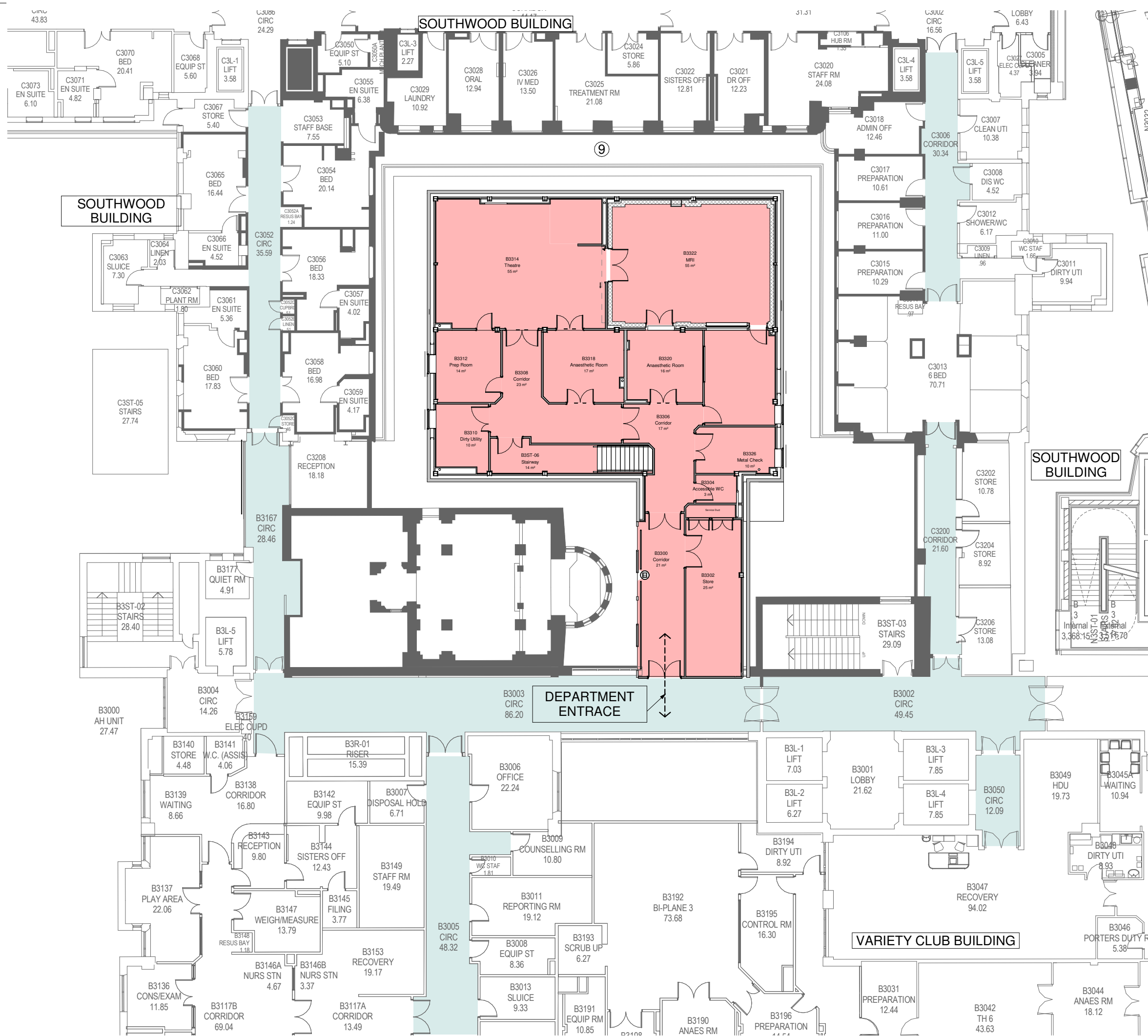
Proposed Level 02 (Ground Floor) Plan showing surrounding clinical uses	16021 JOB NUMBER	(01)029 DRAWING NUMBER	H REV
Great Ormond Street Hospital for Children - NHS Foundation Trust	03/03/2017 DATE	1 : 100 SCALE @ A1	

Ansell & Bailey LLP Chartered Architects . 24-32 Stephenson Way . London . NW1 2HD . 020 73870141 . architects@ansellandbailey.com

ANSELL + BAILEY

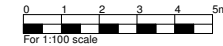
THIS DRAWING IS PROTECTED BY COPYRIGHT - FIGURED DIMENSIONS ONLY TO BE TAKEN FROM THIS DRAWING. DIMENSIONS TO BE CHECKED ON SITE AND ANY DISCREPANCIES REPORTED TO THE ARCHITECT IMMEDIATELY.
 PURPOSE OF ISSUE - A = FOR COMMENT/ CO-ORDINATION B = FOR INFORMATION C = FOR APPROVAL D = FOR TENDER
 E = FOR CONSTRUCTION F = FINAL DESIGN DRAWING

Rev	Rev Date	Revision Description	Drawn/Checked	Purpose of Issue
A	22/03/2017	General Update	VS/MH	C
B	31/03/2017	General Update	VS/MH	C
C	06/04/2017	Colour Added	VS/MH	A
D	13/04/2017	General Update	VS/MH	A
E	28/04/2017	Pricing Issue	VS/MH	P
F	12/05/2017	For Planning	VS/MH	C
G	25/05/2017	For Planning	VS/MH	P
H	06/06/2017	For Planning	VS/MH	P

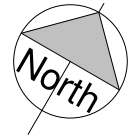


KEY

- ① New Galvanised steel gates
- ② New Galvanised steel ramps and balustrades
- ③ New Galvanised steel maintenance stair
- ④ New Galvanised steel bridge link
- ⑤ New Galvanised steel platform and stairs with BigFoot support
- ⑥ New Galvanised steel roof access ladder
- ⑦ Existing Tarmac surface
- ⑧ Existing Stone walkway
- ⑨ Existing concrete balcony
- ⑩ New 450 x 450 paving slabs with gravel border
- ⑪ New green roof with gravel border
- ⑫ New Galvanised steel guarding



FOR APPROVAL



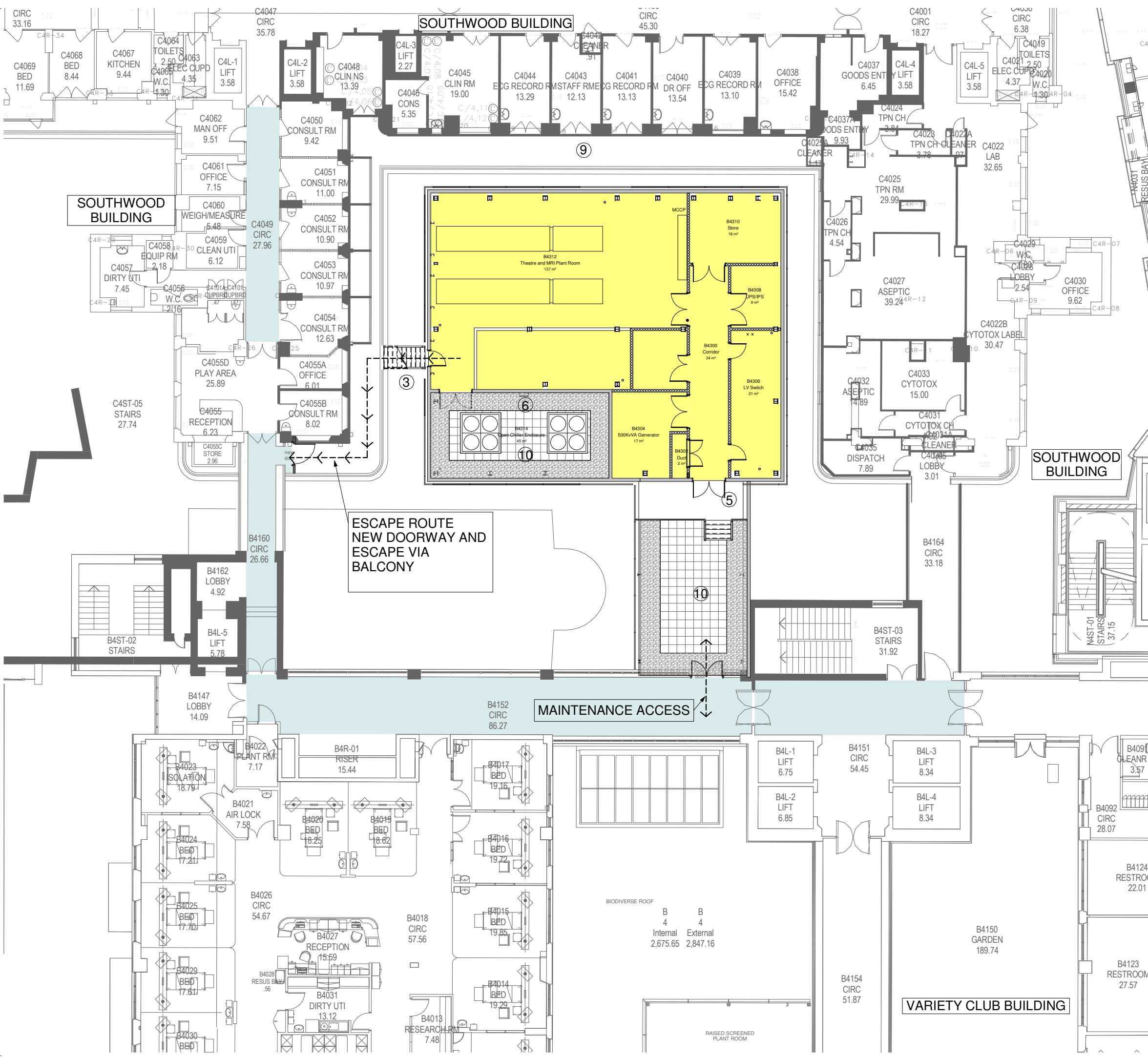
Proposed Level 03 (First Floor) Plan showing surrounding clinical uses	16021 JOB NUMBER	(01)030 DRAWING NUMBER	H REV
Great Ormond Street Hospital for Children - NHS Foundation Trust	07/03/2017 DATE	1 : 100 SCALE @ A1	

Ansell & Bailey LLP Chartered Architects . 24-32 Stephenson Way . London . NW1 2HD . 020 73870141 . architects@ansellandbailey.com

ANSELL + BAILEY

THIS DRAWING IS PROTECTED BY COPYRIGHT - FIGURED DIMENSIONS ONLY TO BE TAKEN FROM THIS DRAWING. DIMENSIONS TO BE CHECKED ON SITE AND ANY DISCREPANCIES REPORTED TO THE ARCHITECT IMMEDIATELY.
 PURPOSE OF ISSUE - A = FOR COMMENT/ CO-ORDINATION B = FOR INFORMATION C = FOR APPROVAL D = FOR TENDER E = FOR CONSTRUCTION F = FINAL DESIGN DRAWING

Rev	Rev Date	Revision Description	Drawn/Checked	Purpose of Issue
A	22/03/2017	General Update	VS/MH	C
B	31/03/2017	General Update	VS/MH	C
C	06/04/2017	Colour Added	VS/MH	A
D	13/04/2017	General Update	VS/MH	A
E	28/04/2017	Pricing Issue	VS/MH	P
F	12/05/2017	For Planning	VS/MH	C
G	25/05/2017	For Planning	VS/MH	P
H	06/06/2017	For Planning	VS/MH	P



KEY

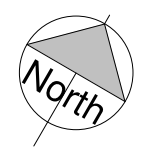
- ① New Galvanised steel gates
- ② New Galvanised steel ramps and balustrades
- ③ New Galvanised steel maintenance stair
- ④ New Galvanised steel bridge link
- ⑤ New Galvanised steel platform and stairs with BigFoot support
- ⑥ New Galvanised steel roof access ladder
- ⑦ Existing Tarmac surface
- ⑧ Existing Stone walkway
- ⑨ Existing concrete balcony
- ⑩ New 450 x 450 paving slabs with gravel border
- ⑪ New green roof with gravel border
- ⑫ New Galvanised steel guarding

FOR APPROVAL

Proposed Level 04 (Second Floor) Plan showing surrounding clinical uses	16021	(01)031	H
Great Ormond Street Hospital for Children - NHS Foundation Trust	JOB NUMBER	DRAWING NUMBER	REV
07/03/2017	DATE	1 : 100	SCALE @ A1

Ansell & Bailey LLP Chartered Architects . 24-32 Stephenson Way . London . NW1 2HD . 020 73870141 . architects@ansellandbailey.com

ANSELL + BAILEY

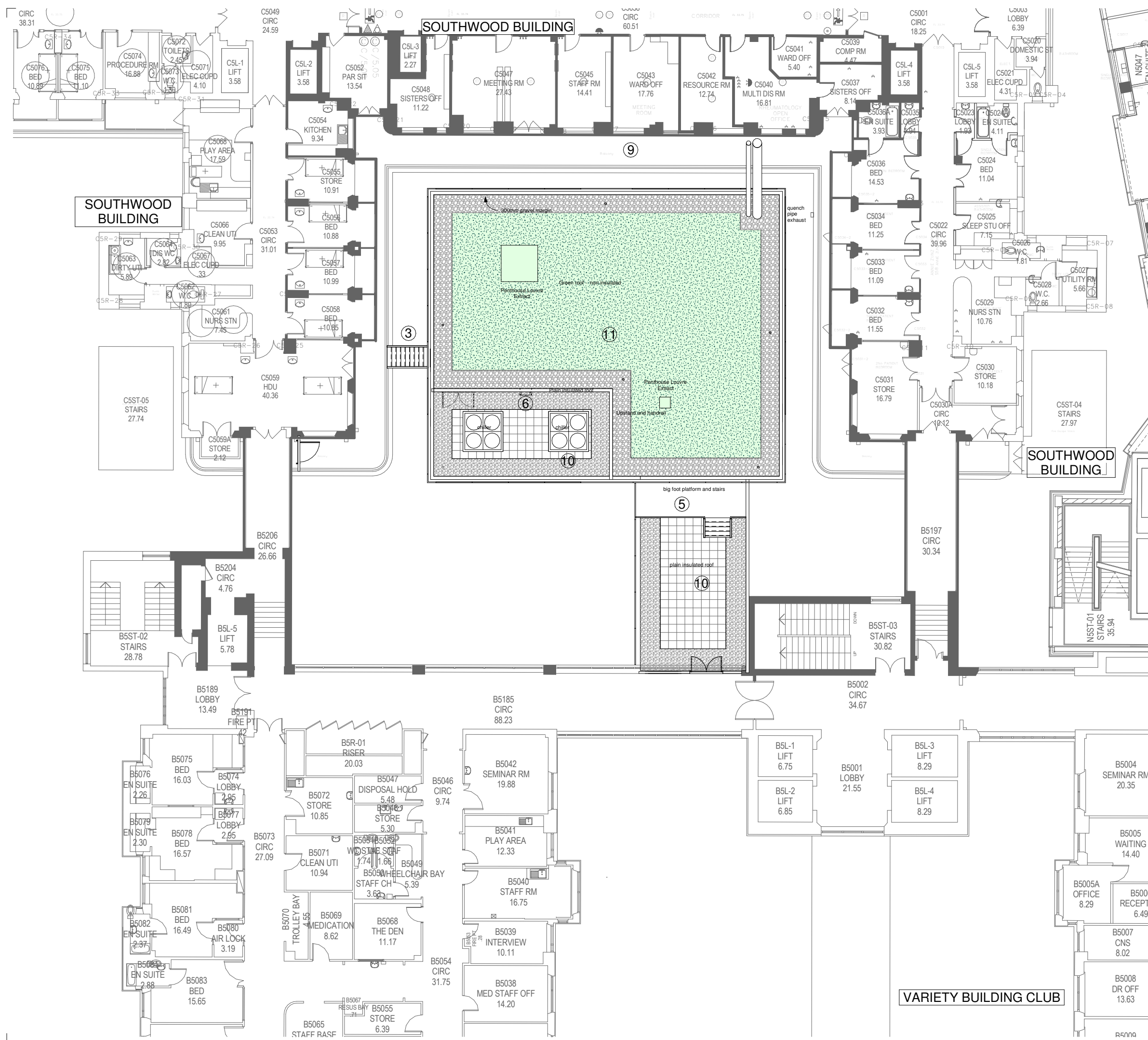


BIO-DIVERSE ROOF
 B 4
 B 4
 Internal 2,675.65 External 2,847.16

VARIETY CLUB BUILDING

THIS DRAWING IS PROTECTED BY COPYRIGHT - FIGURED DIMENSIONS ONLY TO BE TAKEN FROM THIS DRAWING. DIMENSIONS TO BE CHECKED ON SITE AND ANY DISCREPANCIES REPORTED TO THE ARCHITECT IMMEDIATELY.
 PURPOSE OF ISSUE - A = FOR COMMENT/ CO-ORDINATION B = FOR INFORMATION C = FOR APPROVAL D = FOR TENDER E = FOR CONSTRUCTION F = FINAL DESIGN DRAWING

Rev	Rev Date	Revision Description	Drawn/Checked	Purpose of Issue
A	22/03/2017	General Update	VS/MH	C
B	31/03/2017	General Update	VS/MH	C
C	06/04/2017	Colour Added	VS/MH	A
D	13/04/2017	General Update	VS/MH	A
E	28/04/2017	Pricing Issue	VS/MH	P
F	12/05/2017	For Planning	VS/MH	C
G	25/05/2017	For Planning	VS/MH	P
H	06/06/2017	For Planning	VS/MH	P



KEY

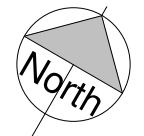
- ① New Galvanised steel gates
- ② New Galvanised steel ramps and balustrades
- ③ New Galvanised steel maintenance stair
- ④ New Galvanised steel bridge link
- ⑤ New Galvanised steel platform and stairs with BigFoot support
- ⑥ New Galvanised steel roof access ladder
- ⑦ Existing Tarmac surface
- ⑧ Existing Stone walkway
- ⑨ Existing concrete balcony
- ⑩ New 450 x 450 paving slabs with gravel border
- ⑪ New green roof with gravel border
- ⑫ New Galvanised steel guarding

FOR APPROVAL

Proposed Level 05 (Third Floor) Roof Plan showing surrounding clinical uses	16021 JOB NUMBER	(01)032 DRAWING NUMBER	H REV
Great Ormond Street Hospital for Children - NHS Foundation Trust	07/03/2017 DATE	1 : 100 SCALE @ A1	

Ansell & Bailey LLP Chartered Architects - 24-32 Stephenson Way - London - NW1 2HD - 020 73870141 - architects@ansellandbailey.com

ANSELL + BAILEY



VARIETY BUILDING CLUB