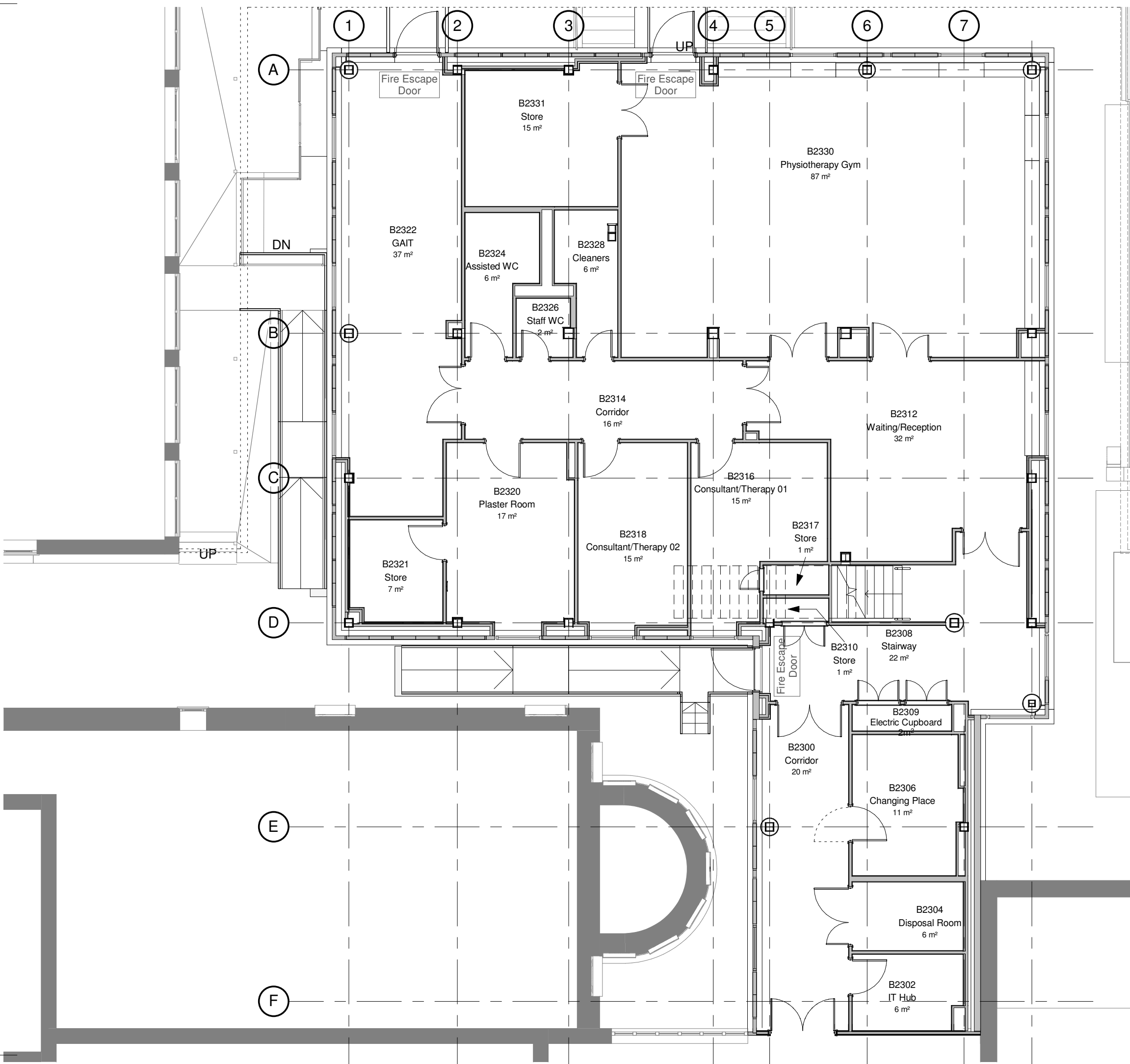


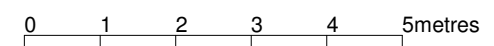
THIS DRAWING IS PROTECTED BY COPYRIGHT - FIGURED DIMENSIONS ONLY TO BE TAKEN FROM THIS DRAWING. DIMENSIONS TO BE CHECKED ON SITE AND ANY DISCREPANCIES REPORTED TO THE ARCHITECT IMMEDIATELY.
 PURPOSE OF ISSUE - A = FOR COMMENT/CO-ORDINATION B = FOR INFORMATION C = FOR APPROVAL D = FOR TENDER E = FOR CONSTRUCTION F = FINAL DESIGN DRAWING

Rev	Rev Date	Revision Description	Drawn/Checked	Purpose of Issue
A	07/10/2016	Issued For Approval	VS/MH	C
B	04/01/2017	Gym Feasibility Sketch Option 1	VS/MH	A
C	16/01/2017	Issued For Approval	VS/MH	C
D	21/02/2017	Issued for Information	VS/MH	C
E	27/02/2017	Updated to suit client comments 23/02/2017	VS/BF	C
F	03/03/2017	Updated to suit client comments on 28/02/2017	VS/BF	C
G	17/03/2017	Issued for sign off	VS/MH	C
H	22/03/2017	General Update	VS/MH	C
J	31/03/2017	General Update	VS/MH	C
K	06/04/2017	Colour Added	VS/MH	A
L	11/04/2017	General Issue	VS/MH	A
M	13/04/2017	General Update	VS/MH	A
N	28/04/2017	Pricing Issue	VS/MH	P
P	12/05/2017	For Planning	VS/MH	C
R	25/05/2017	For Planning	VS/MH	P
S	06/06/2017	For Planning	VS/MH	P

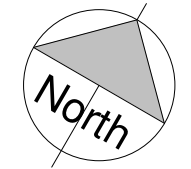
Room Schedule (Key) Level 02		
Number	Name	Area
Level 02		
B2300	Corridor	20 m ²
B2302	IT Hub	6 m ²
B2304	Disposal Room	6 m ²
B2306	Changing Place	11 m ²
B2308	Stairway	22 m ²
B2309	Electrical Cupboard	2 m ²
B2310	Store	1 m ²
B2312	Waiting/Reception	32 m ²
B2314	Corridor	16 m ²
B2316	Consultant/Therapy 01	15 m ²
B2317	Store	1 m ²
B2318	Consultant/Therapy 02	15 m ²
B2320	Plaster Room	17 m ²
B2321	Store	7 m ²
B2322	GAIT	37 m ²
B2324	Assisted WC	6 m ²
B2326	Staff WC	2 m ²
B2328	Cleaners	6 m ²
B2330	Physiotherapy Gym	87 m ²
B2331	Store	15 m ²



FOR APPROVAL



For 1:100 scale



Proposed Level 02 (Ground Floor) Plan	16021	(01)002	S
	JOB NUMBER	DRAWING NUMBER	REV
Great Ormond Street Hospital for Children - NHS Foundation Trust	21/09/2016	1 : 100	
	DATE	SCALE @ A3	

Ansell & Bailey LLP Chartered Architects . 24-32 Stephenson Way . London . NW1 2HD . 020 73870141 . architects@ansellandbailey.com

ANSELL + BAILEY

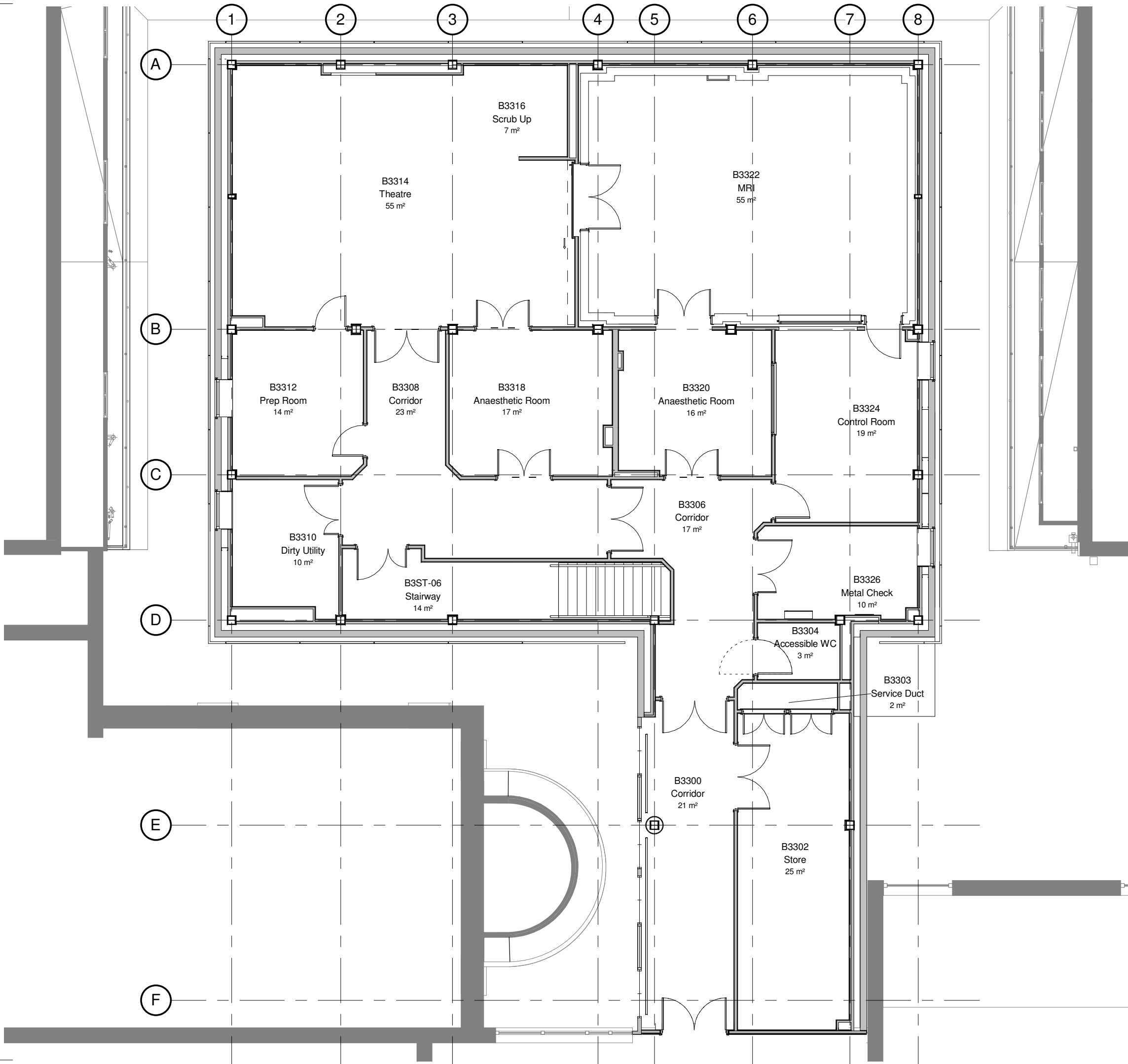
THIS DRAWING IS PROTECTED BY COPYRIGHT - FIGURED DIMENSIONS ONLY TO BE TAKEN FROM THIS DRAWING. DIMENSIONS TO BE CHECKED ON SITE AND ANY DISCREPANCIES REPORTED TO THE ARCHITECT IMMEDIATELY.
 PURPOSE OF ISSUE - A = FOR COMMENT/ CO-ORDINATION B = FOR INFORMATION C = FOR APPROVAL D = FOR TENDER E = FOR CONSTRUCTION F = FINAL DESIGN DRAWING

Rev	Rev Date	Revision Description	Drawn/Checked	Purpose of Issue
A	14/09/2016	Issued for sign off	VS/MH	C
B	05/10/2016	Plan Updated following client comments	VS/MH	C
C	07/10/2016	Issued For Approval	VS/MH	C
D	20/10/2016	Siemens Cage Added. Issued For Approval	VS/MH	C
E	23/11/2016	Site Coordinated to suit surveyors model. Lobby moved into MRI room as per Siemens comments	VS/MH	C
F	16/01/2017	Issued For Approval	VS/MH	C
G	19/01/2017	Removed Level 3 Lobby	VS/MH	C
H	21/02/2017	Issued for Information	VS/MH	C
J	27/02/2017	Structural Grid 7 has been moved 260mm towards grid line 8. Structure needs to follow.	VS/MH	C
K	22/03/2017	General Update	VS/MH	C
L	31/03/2017	General Update	VS/MH	C
M	06/04/2017	Colour Added	VS/MH	A
N	11/04/2017	General Issue	VS/MH	A
P	13/04/2017	General Update	VS/MH	A
Q	28/04/2017	Pricing Issue	VS/MH	P
R	12/05/2017	For Planning	VS/MH	C
S	25/05/2017	For Planning	VS/MH	P

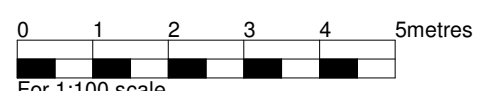
Room Schedule (Key) Level 03

Number	Name	Area
--------	------	------

Number	Name	Area
B3ST-06	Stairway	14 m ²
B3300	Corridor	21 m ²
B3302	Store	25 m ²
B3303	Service Duct	2 m ²
B3304	Accessible WC	3 m ²
B3306	Corridor	17 m ²
B3308	Corridor	23 m ²
B3310	Dirty Utility	10 m ²
B3312	Prep Room	14 m ²
B3314	Theatre	55 m ²
B3316	Scrub Up	7 m ²
B3318	Anaesthetic Room	17 m ²
B3320	Anaesthetic Room	16 m ²
B3322	MRI	55 m ²
B3324	Control Room	19 m ²
B3326	Metal Check	10 m ²



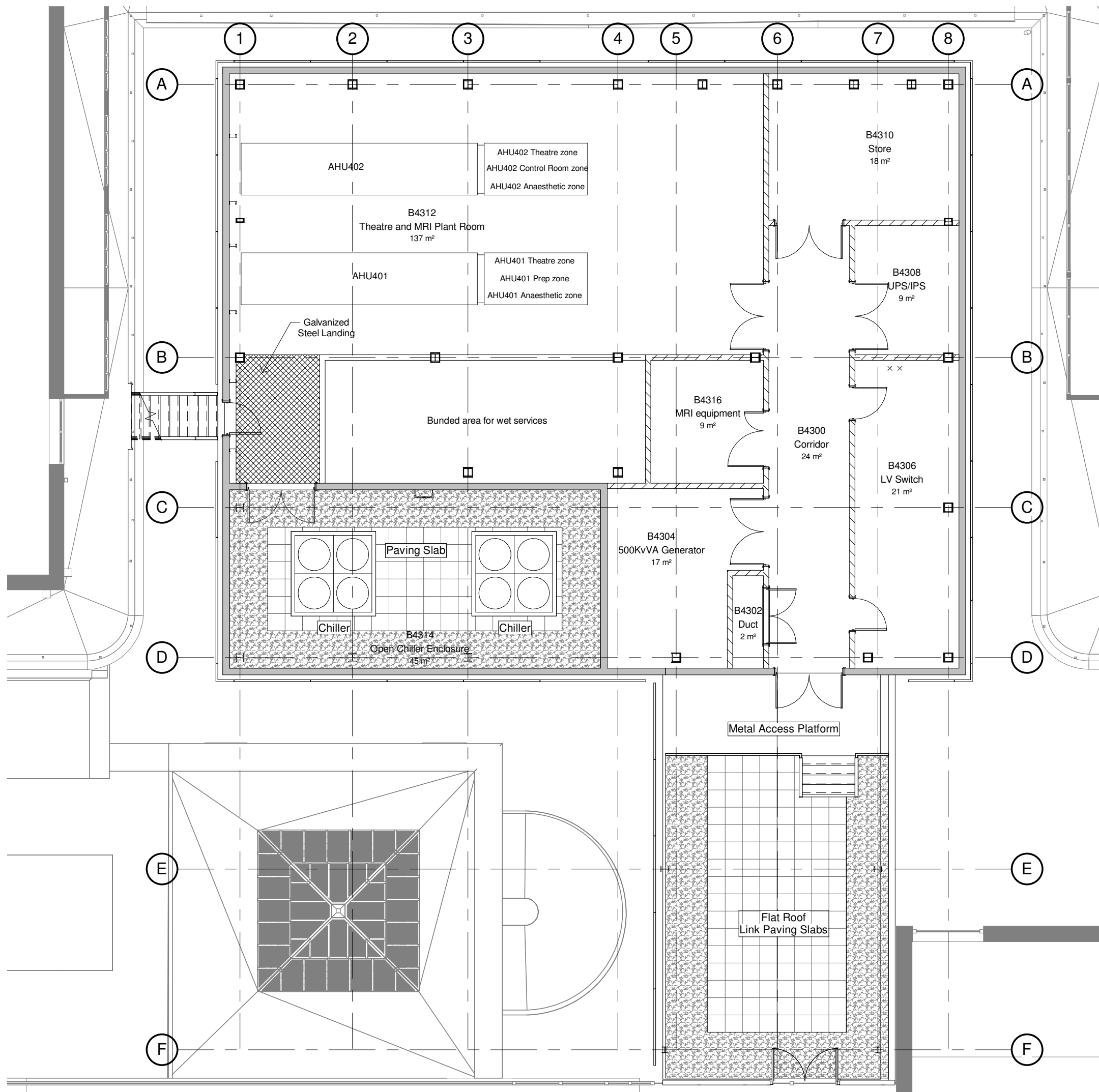
FOR APPROVAL



Proposed Level 03 (First Floor) Plan	16021	(01)003	S
	JOB NUMBER	DRAWING NUMBER	REV
Great Ormond Street Hospital for Children - NHS Foundation Trust	14/09/2016	1 : 100	
	DATE	SCALE @ A3	

Ansell & Bailey LLP Chartered Architects . 24-32 Stephenson Way . London . NW1 2HD. 020 73870141 . architects@ansellandbailey.com

ANSELL + BAILEY



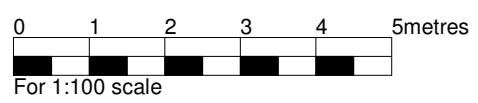
THIS DRAWING IS PROTECTED BY COPYRIGHT - FIGURED DIMENSIONS ONLY TO BE TAKEN FROM THIS DRAWING. DIMENSIONS TO BE CHECKED ON SITE AND ANY DISCREPANCIES REPORTED TO THE ARCHITECT IMMEDIATELY. PURPOSE OF ISSUE - A = FOR COMMENT/ CO-ORDINATION B = FOR INFORMATION C = FOR APPROVAL D = FOR TENDER E = FOR CONSTRUCTION F = FINAL DESIGN DRAWING

Rev	Rev Date	Revision Description	Drawn/Checked	Purpose of Issue
A	07/10/2016	Issued For Approval	VS/MH	C
B	16/01/2017	Issued For Approval	VS/MH	C
C	21/02/2017	Issued for Information	VS/MH	C
D	22/03/2017	General Update	VS/MH	C
E	31/03/2017	General Update	VS/MH	C
F	06/04/2017	Colour Added	VS/MH	A
G	11/04/2017	General Issue	VS/MH	A
H	12/04/2017	MRI Equipment Room Relocated	VS/MH	A
J	13/04/2017	General Update	VS/MH	A
K	28/04/2017	Pricing Issue	VS/MH	P
L	12/05/2017	For Planning	VS/MH	C
M	25/05/2017	For Planning	VS/MH	P

Room Schedule (Key) Level 04

Number	Name	Area
Level 04A		
B4300	Corridor	24 m ²
B4302	Duct	2 m ²
B4304	500KvVA Generator	17 m ²
B4306	LV Switch	21 m ²
B4308	UPS/IPS	9 m ²
B4310	Store	18 m ²
B4312	Theatre and MRI Plant Room	137 m ²
B4314	Open Chiller Enclosure	45 m ²
B4316	MRI equipment	9 m ²

FOR APPROVAL



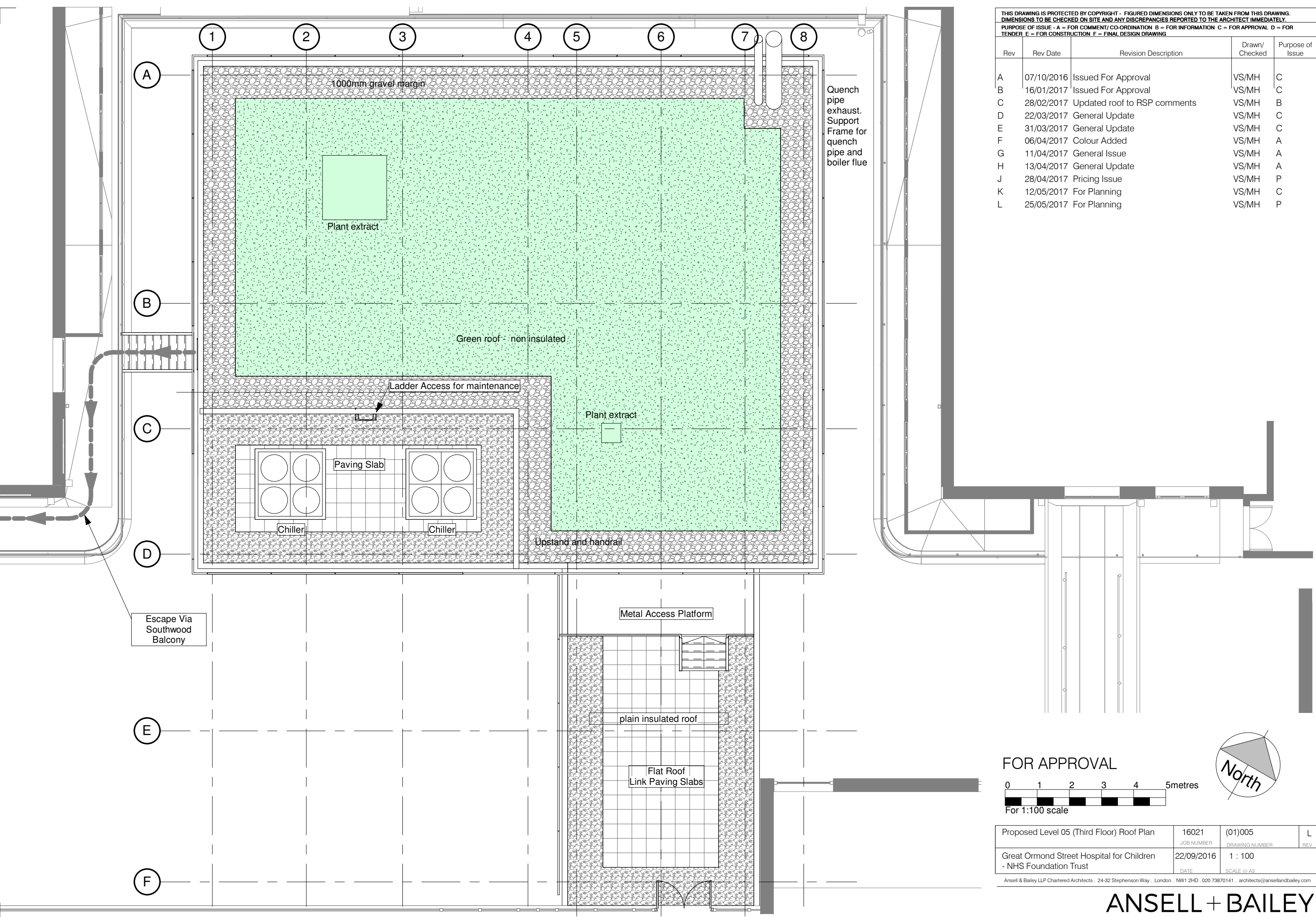
Proposed Level 04 (Second Floor) Plan	16021	(01)004	M
	JOB NUMBER	DRAWING NUMBER	REV
Great Ormond Street Hospital for Children - NHS Foundation Trust	21/09/2016	1 : 100	
	DATE	SCALE @ A3	

Ansell & Bailey LLP Chartered Architects . 24-32 Stephenson Way . London . NW1 2HD . 020 73870141 . architects@ansellandbailey.com

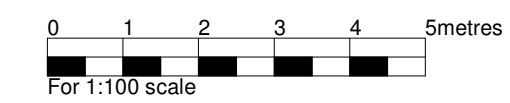
ANSELL + BAILEY

THIS DRAWING IS PROTECTED BY COPYRIGHT - FIGURED DIMENSIONS ONLY TO BE TAKEN FROM THIS DRAWING. DIMENSIONS TO BE CHECKED ON SITE AND ANY DISCREPANCIES REPORTED TO THE ARCHITECT IMMEDIATELY.
 PURPOSE OF ISSUE - A = FOR COMMENT/ CO-ORDINATION B = FOR INFORMATION C = FOR APPROVAL D = FOR TENDER E = FOR CONSTRUCTION F = FINAL DESIGN DRAWING

Rev	Rev Date	Revision Description	Drawn/Checked	Purpose of Issue
A	07/10/2016	Issued For Approval	VS/MH	C
B	16/01/2017	Issued For Approval	VS/MH	C
C	28/02/2017	Updated roof to RSP comments	VS/MH	B
D	22/03/2017	General Update	VS/MH	C
E	31/03/2017	General Update	VS/MH	C
F	06/04/2017	Colour Added	VS/MH	A
G	11/04/2017	General Issue	VS/MH	A
H	13/04/2017	General Update	VS/MH	A
J	28/04/2017	Pricing Issue	VS/MH	P
K	12/05/2017	For Planning	VS/MH	C
L	25/05/2017	For Planning	VS/MH	P



FOR APPROVAL



Proposed Level 05 (Third Floor) Roof Plan	16021	(01)005	L
	JOB NUMBER	DRAWING NUMBER	REV
Great Ormond Street Hospital for Children - NHS Foundation Trust	22/09/2016	1 : 100	
	DATE	SCALE @ A3	

Ansell & Bailey LLP Chartered Architects, 24-32 Stephenson Way, London, NW1 2HD, 020 73870141, architects@ansellandbailey.com

ANSELL + BAILEY