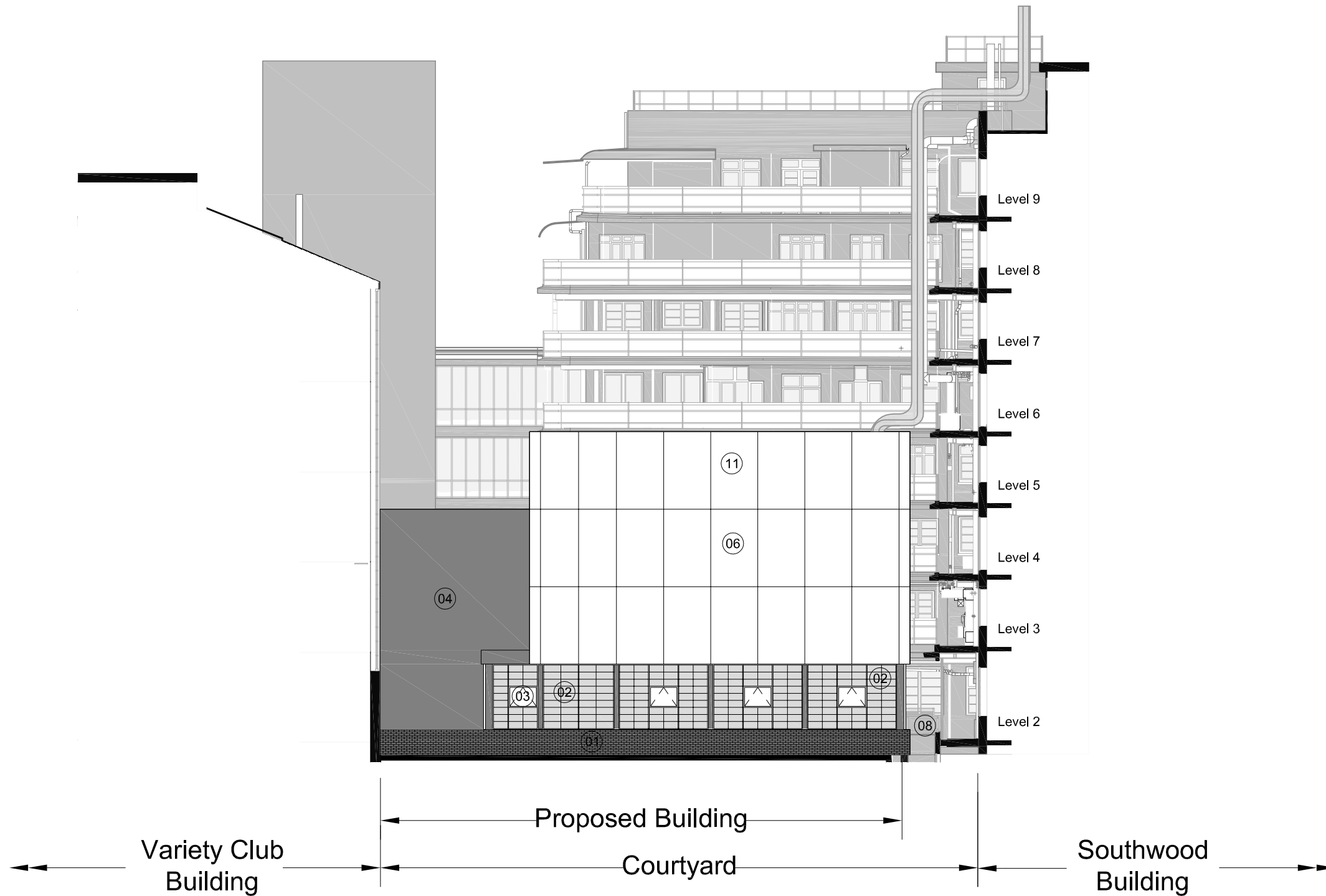
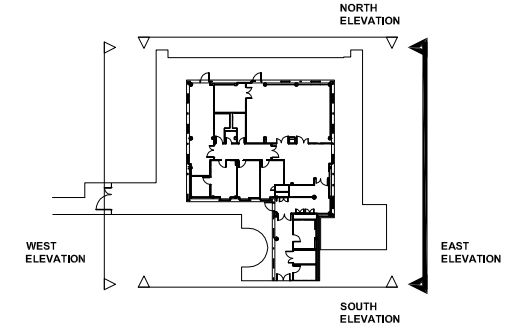


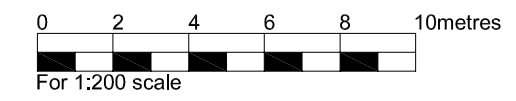
THIS DRAWING IS PROTECTED BY COPYRIGHT - FIGURED DIMENSIONS ONLY TO BE TAKEN FROM THIS DRAWING. DIMENSIONS TO BE CHECKED ON SITE AND ANY DISCREPANCIES REPORTED TO THE ARCHITECT IMMEDIATELY.

PURPOSE OF ISSUE: (A)FOR COMMENT / CO-ORDINATION (B)FOR INFORMATION (C)FOR APPROVAL (D)FOR TENDER (E)FOR CONSTRUCTION (F)FINAL DESIGN DRAWING

Rev	Rev Date	Revision Description	Drawn/Checked	Purpose of Issue
A	22-03-2017	General update		
B	31-03-2017	General update		
C	10-04-2017	General update		
D	13-04-2017	General update		
E	28-04-2017	Pricing Issue		
F	12-05-2017	For planning		
G	25-05-2017	For Planning		



- ① Facing brickwork, slate blue
- ② Kalwall translucent panels
- ③ Aluminium PPC windows
- ④ PPC insulated metal panels
- ⑤ Aluminium Polyester Powder Coated doors
- ⑥ Printed screen cladding
- ⑦ Aluminium PPC louvres
- ⑧ Galvanised railings
- ⑨ Removable panel behind screen for MRI replacement
- ⑩ Quench pipe and generator flue Insulated metal panel behind screen cladding
- ⑪



FOR APPROVAL

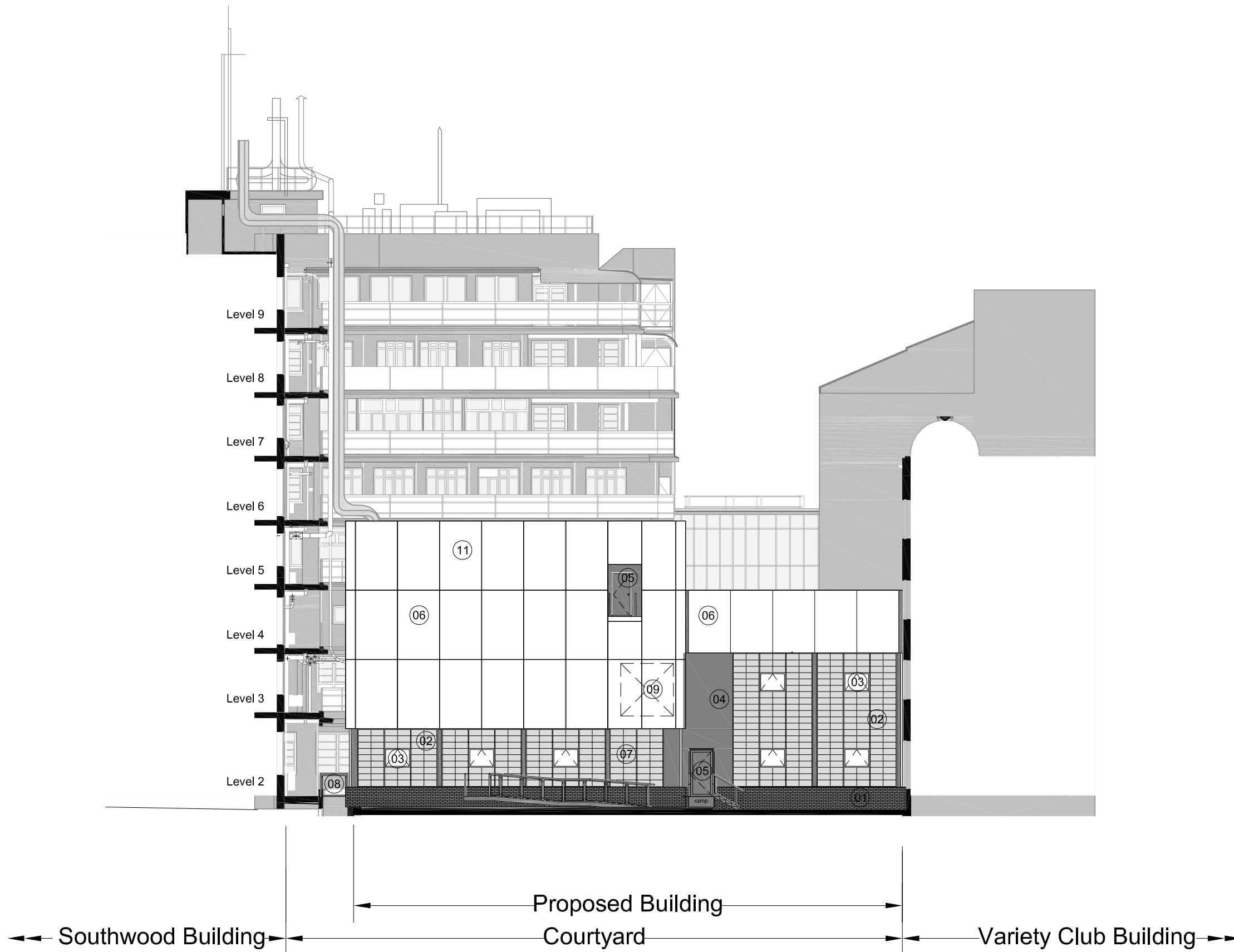
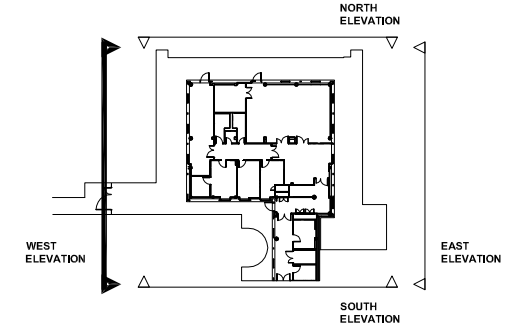
Proposed Elevation East	16021 JOB NUMBER	(02)019 DRAWING NUMBER	G REV
Great Ormond Street Hospital for Children - NHS Foundation Trust	Jan 2017 DATE	1:200@A3 SCALE	

Ansell & Bailey LLP Chartered Architects 24-32 Stephenson Way London NW1 2HD 020 7387 0141 architects@ansellandbailey.com

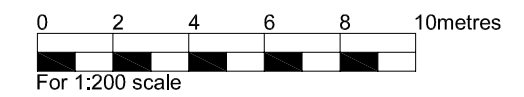
THIS DRAWING IS PROTECTED BY COPYRIGHT - FIGURED DIMENSIONS ONLY TO BE TAKEN FROM THIS DRAWING. DIMENSIONS TO BE CHECKED ON SITE AND ANY DISCREPANCIES REPORTED TO THE ARCHITECT IMMEDIATELY.

PURPOSE OF ISSUE: (A)FOR COMMENT / CO-ORDINATION (B)FOR INFORMATION (C)FOR APPROVAL (D)FOR TENDER (E)FOR CONSTRUCTION (F)FINAL DESIGN DRAWING

Rev	Rev Date	Revision Description	Drawn/Checked	Purpose of Issue
A	22-03-2017	General update		
B	31-03-2017	General update		
C	10-04-2017	General update		
D	13-04-2017	General update		
E	28-04-2017	Pricing Issue		
F	12-05-2017	For Planning		
G	25-05-2017	For Planning		



- ① Facing brickwork, slate blue
- ② Kalwall translucent panels
- ③ Aluminium PPC windows
- ④ PPC insulated metal panels
- ⑤ Aluminium Polyester Powder Coated doors
- ⑥ Printed screen cladding
- ⑦ Aluminium PPC louvres
- ⑧ Galvanised railings
- ⑨ Removable panel behind screen for MRI replacement
- ⑩ Quench pipe and generator flue Insulated metal panel behind
- ⑪ screen cladding



FOR APPROVAL

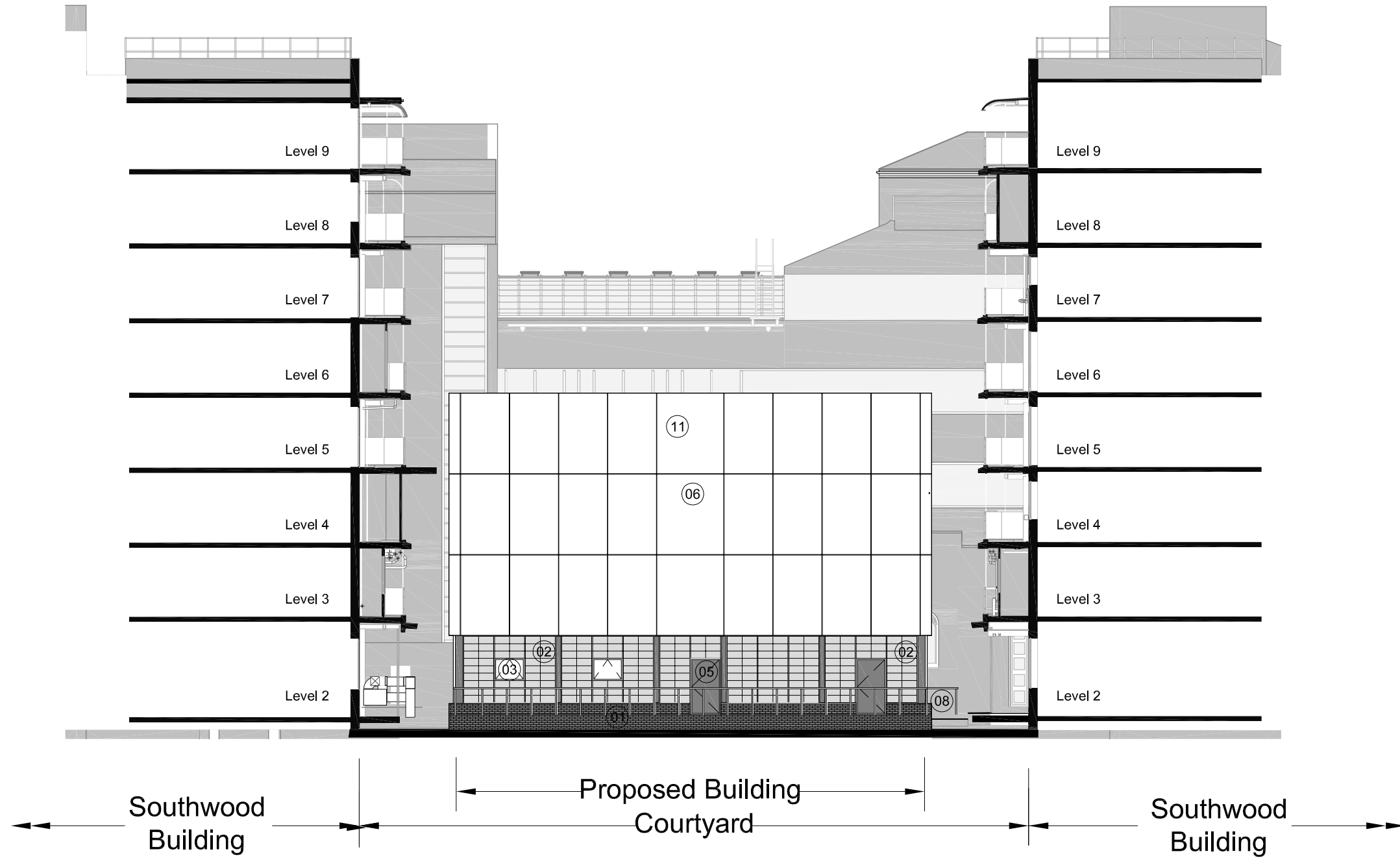
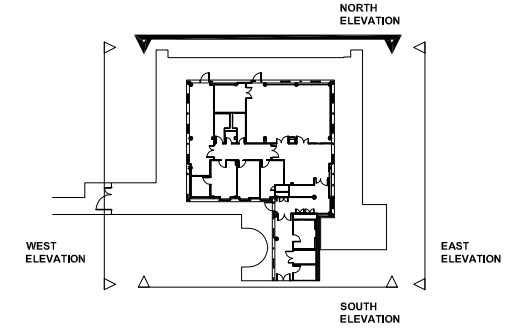
Proposed Elevation West	16021 JOB NUMBER	(02)020 DRAWING NUMBER	G REV
Great Ormond Street Hospital for Children - NHS Foundation Trust	Jan 2017 DATE	1:200@A3 SCALE	

Ansell & Bailey LLP Chartered Architects 24-32 Stephenson Way London NW1 2HD 020 7387 0141 architects@ansellandbailey.com

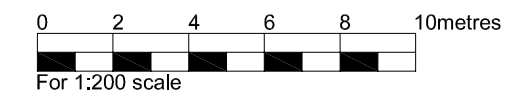
ANSELL + BAILEY

THIS DRAWING IS PROTECTED BY COPYRIGHT - FIGURED DIMENSIONS ONLY TO BE TAKEN FROM THIS DRAWING. DIMENSIONS TO BE CHECKED ON SITE AND ANY DISCREPANCIES REPORTED TO THE ARCHITECT IMMEDIATELY.
 PURPOSE OF ISSUE: (A)FOR COMMENT / CO-ORDINATION (B)FOR INFORMATION (C)FOR APPROVAL (D)FOR TENDER (E)FOR CONSTRUCTION (F)FINAL DESIGN DRAWING

Rev	Rev Date	Revision Description	Drawn/Checked	Purpose of Issue
A	22-03-2017	General update		
B	31-03-2017	General update		
C	07-04-2017	General update		
D	13-04-2017	General update		
E	28-04-2017	Pricing Issue		
F	12-05-2017	For Planning		
G	25-05-2017	For Planning		



- ① Facing brickwork, slate blue
- ② Kalwall translucent panels
- ③ Aluminium PPC windows
- ④ PPC insulated metal panels
- ⑤ Aluminium Polyester Powder Coated doors
- ⑥ Printed screen cladding
- ⑦ Aluminium PPC louvres
- ⑧ Galvanised railings
- ⑨ Removable panel behind screen for MRI replacement
- ⑩ Quench pipe and generator flue Insulated metal panel behind screen cladding
- ⑪



FOR APPROVAL

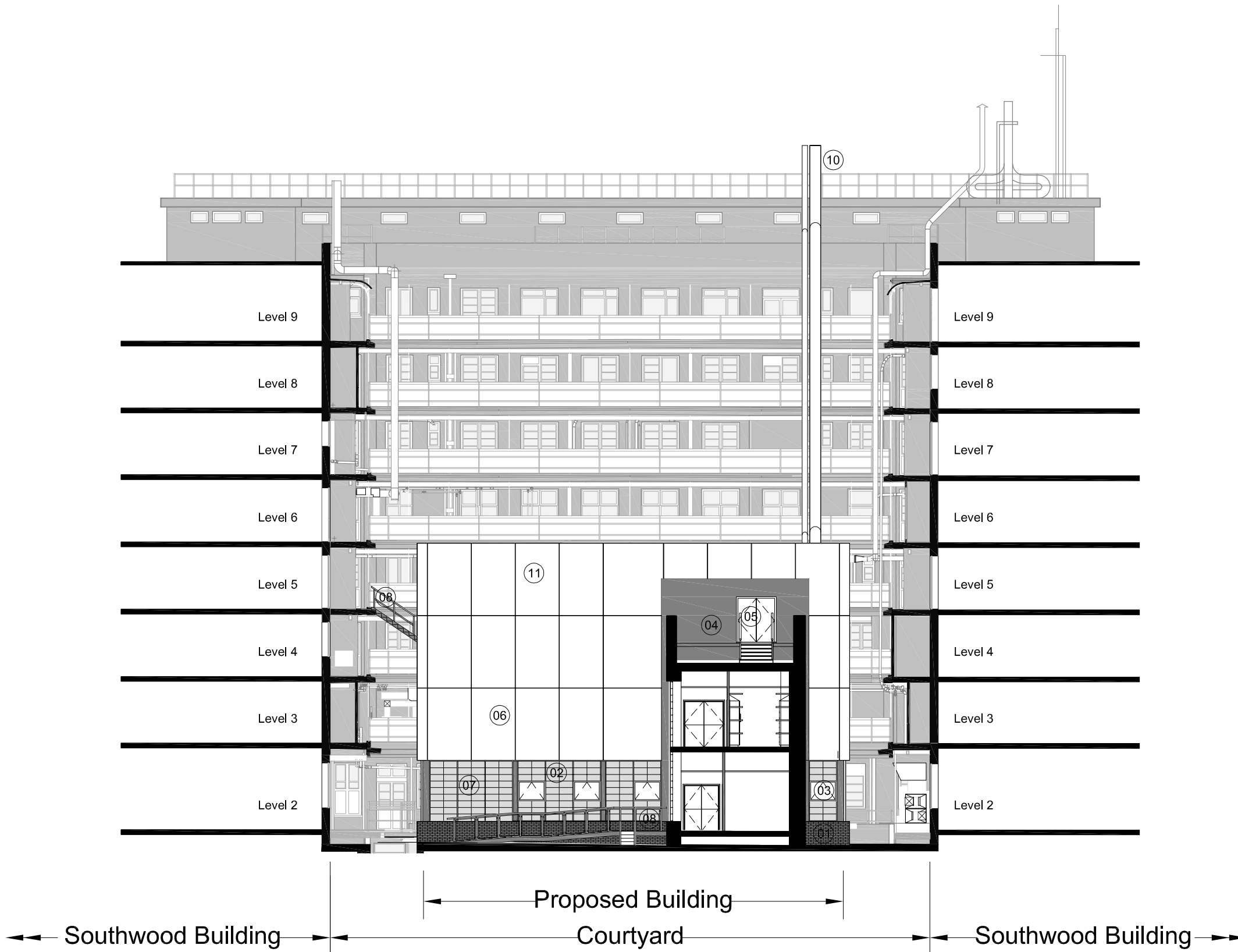
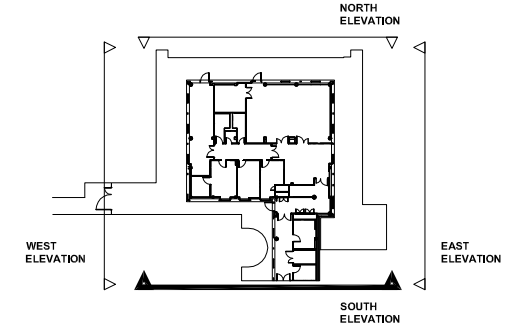
Proposed Elevation North	16021 JOB NUMBER	(02)017 DRAWING NUMBER	G REV
Great Ormond Street Hospital for Children - NHS Foundation Trust	Jan 2017 DATE	1:200@A3 SCALE	

Ansell & Bailey LLP Chartered Architects 24-32 Stephenson Way London NW1 2HD 020 7387 0141 architects@ansellandbailey.com

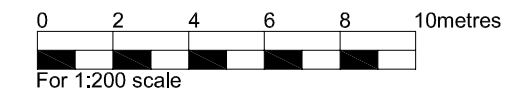
ANSELL + BAILEY

THIS DRAWING IS PROTECTED BY COPYRIGHT - FIGURED DIMENSIONS ONLY TO BE TAKEN FROM THIS DRAWING. DIMENSIONS TO BE CHECKED ON SITE AND ANY DISCREPANCIES REPORTED TO THE ARCHITECT IMMEDIATELY.
 PURPOSE OF ISSUE: (A)FOR COMMENT / CO-ORDINATION (B)FOR INFORMATION (C)FOR APPROVAL (D)FOR TENDER (E)FOR CONSTRUCTION (F)FINAL DESIGN DRAWING

Rev	Rev Date	Revision Description	Drawn/Checked	Purpose of Issue
A	22-03-2017	General update		
B	31-03-2017	General update		
C	07-04-2017	General update		
D	13-04-2017	General update		
E	28-04-2017	Pricing Issue		
F	12-05-2017	For Planning		
G	25-05-2017	For Planning		



- 01 Facing brickwork, slate blue
- 02 Kalwall translucent panels
- 03 Aluminium PPC windows
- 04 PPC insulated metal panels
- 05 Aluminium Polyester Powder Coated doors
- 06 Printed screen cladding
- 07 Aluminium PPC louvres
- 08 Galvanised railings
- 09 Removable panel behind screen for MRI replacement
- 10 Quench pipe and generator flue Insulated metal panel behind screen cladding
- 11



FOR APPROVAL

Proposed Elevation South	16021 JOB NUMBER	(02)018 DRAWING NUMBER	G REV
Great Ormond Street Hospital for Children - NHS Foundation Trust	Jan 2017 DATE	1:200@A3 SCALE	

Ansell & Bailey LLP Chartered Architects 24-32 Stephenson Way London NW1 2HD 020 7387 0141 architects@ansellandbailey.com

ANSELL + BAILEY