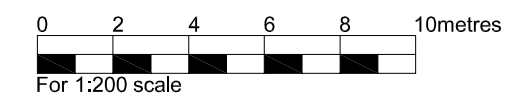
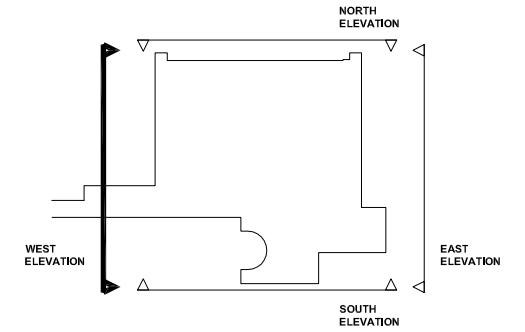
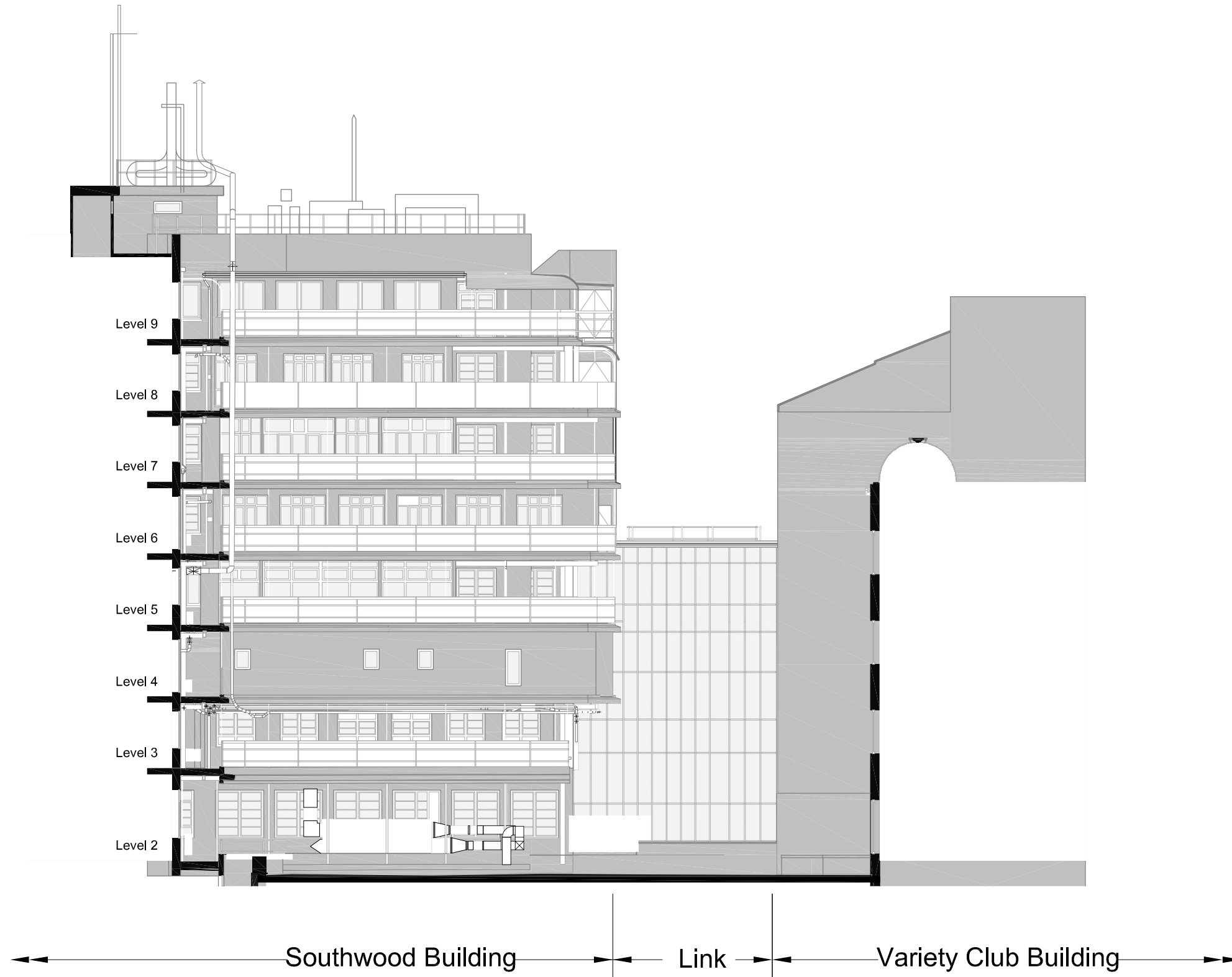


THIS DRAWING IS PROTECTED BY COPYRIGHT - FIGURED DIMENSIONS ONLY TO BE TAKEN FROM THIS DRAWING. DIMENSIONS TO BE CHECKED ON SITE AND ANY DISCREPANCIES REPORTED TO THE ARCHITECT IMMEDIATELY.
 PURPOSE OF ISSUE: (A) FOR COMMENT / CO-ORDINATION (B) FOR INFORMATION (C) FOR APPROVAL (D) FOR TENDER (E) FOR CONSTRUCTION (F) FINAL DESIGN DRAWING

Rev	Rev Date	Revision Description	Drawn/Checked	Purpose of Issue
A	22-03-2017	General update	.	.
B	31-03-2017	General update	.	.
C	13-04-2017	General update	.	.
D	28-04-2017	Pricing Issue	.	.
E	12-05-2017	For Planning	.	.
F	25-05-2017	For Planning	.	.



FOR APPROVAL

Existing Elevation West	16021	(02)015	F
Great Ormond Street Hospital for Children - NHS Foundation Trust	Jan 2017	1:200@A3	REV
	DATE	SCALE	

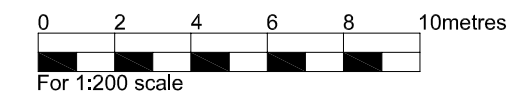
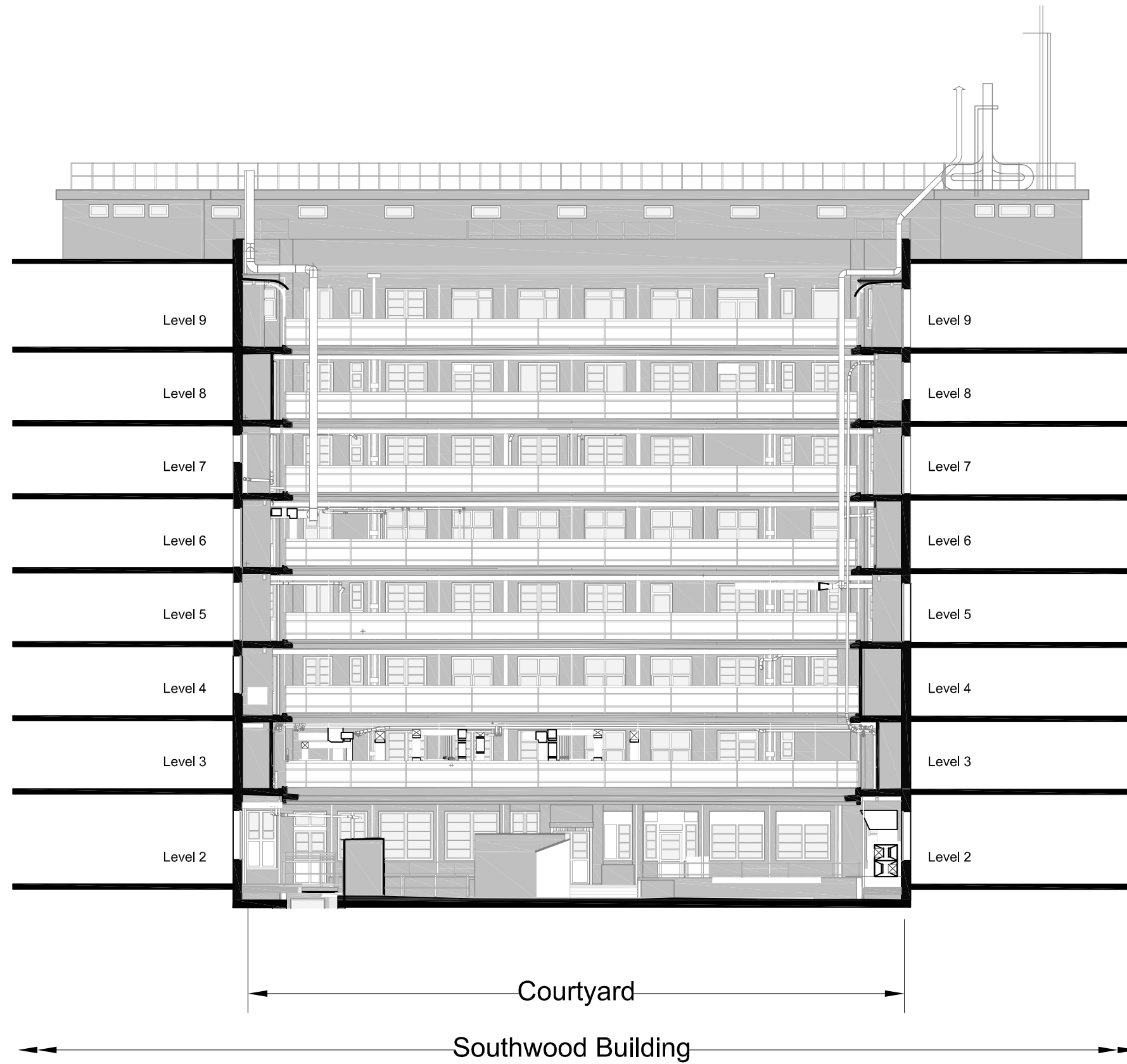
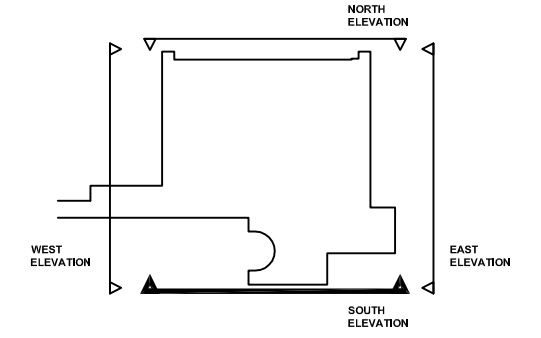
Ansell & Bailey LLP Chartered Architects 24-32 Stephenson Way London NW1 2HD 020 7387 0141 architects@ansellandbailey.com

ANSELL + BAILEY

THIS DRAWING IS PROTECTED BY COPYRIGHT - FIGURED DIMENSIONS ONLY TO BE TAKEN FROM THIS DRAWING. DIMENSIONS TO BE CHECKED ON SITE AND ANY DISCREPANCIES REPORTED TO THE ARCHITECT IMMEDIATELY.

PURPOSE OF ISSUE: (A)FOR COMMENT / CO-ORDINATION (B)FOR INFORMATION (C)FOR APPROVAL (D)FOR TENDER (E)FOR CONSTRUCTION (F)FINAL DESIGN DRAWING

Rev	Rev Date	Revision Description	Drawn/Checked	Purpose of Issue
A	22-03-2017	General update		
B	31-03-2017	General update		
C	13-04-2017	General update		
D	28-04-2017	Pricing Issue		
E	12-05-2017	For Planning		
F	25-05-2017	For Planning		



FOR APPROVAL			
Existing Elevation South	16021 JOB NUMBER	(02)013 DRAWING NUMBER	F REV
Great Ormond Street Hospital for Children - NHS Foundation Trust	Jan 2017 DATE	1:200@A3 SCALE	

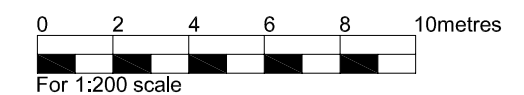
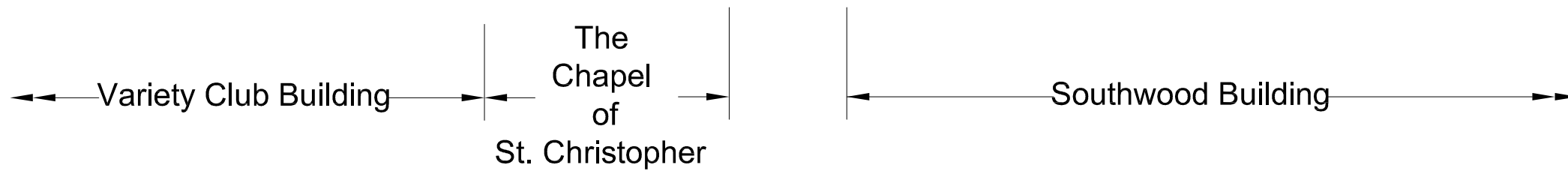
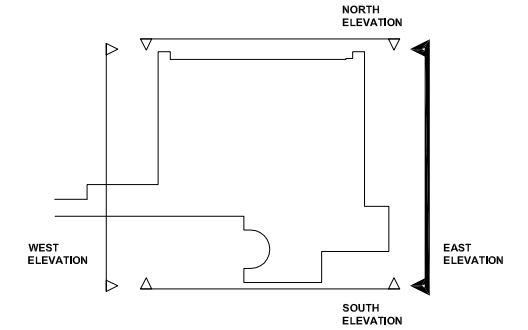
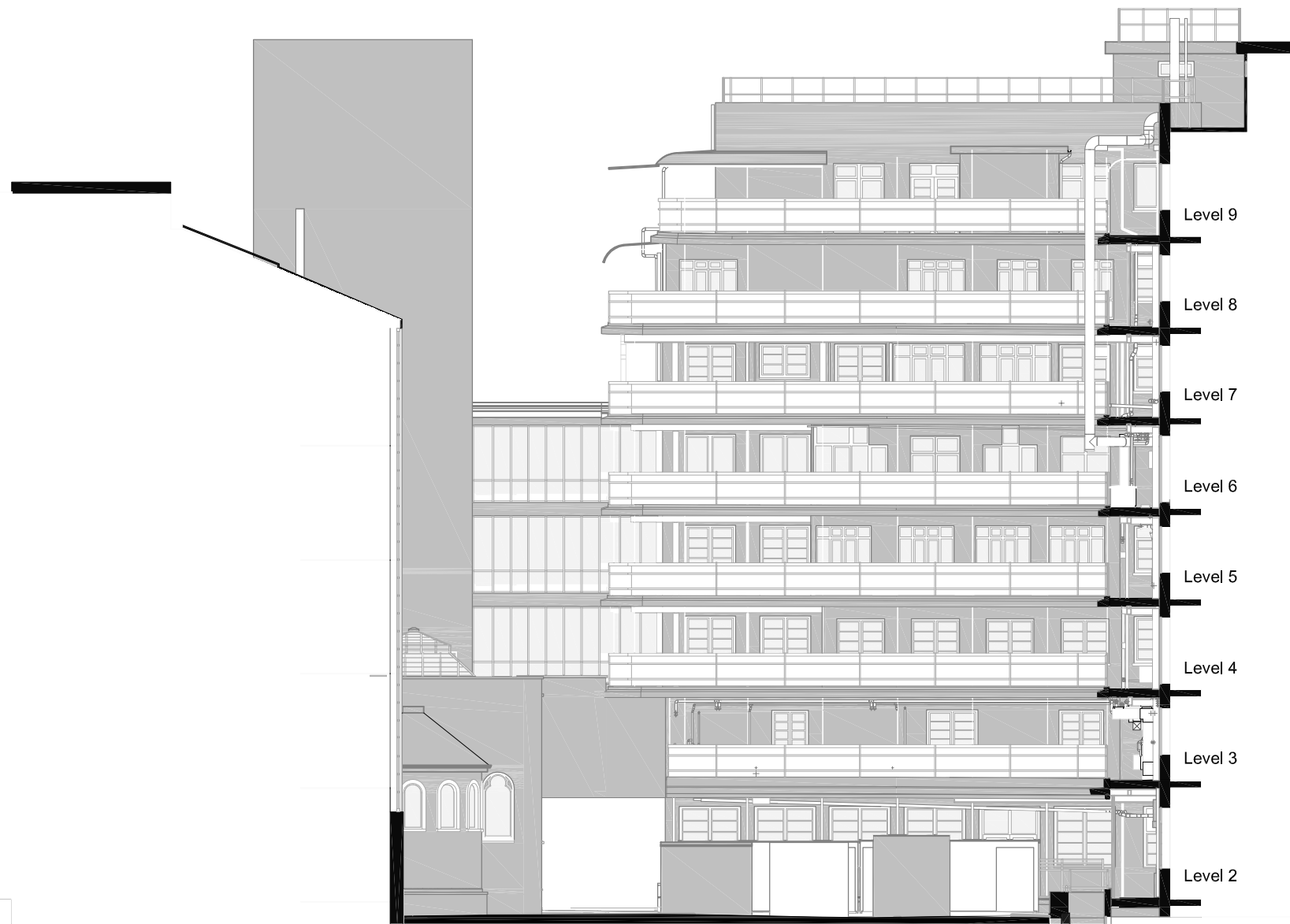
Ansell & Bailey LLP Chartered Architects 24-32 Stephenson Way London NW1 2HD 020 7387 0141 architects@ansellandbailey.com

ANSELL + BAILEY

THIS DRAWING IS PROTECTED BY COPYRIGHT - FIGURED DIMENSIONS ONLY TO BE TAKEN FROM THIS DRAWING. DIMENSIONS TO BE CHECKED ON SITE AND ANY DISCREPANCIES REPORTED TO THE ARCHITECT IMMEDIATELY.

PURPOSE OF ISSUE: (A)FOR COMMENT / CO-ORDINATION (B)FOR INFORMATION (C)FOR APPROVAL (D)FOR TENDER (E)FOR CONSTRUCTION (F)FINAL DESIGN DRAWING

Rev	Rev Date	Revision Description	Drawn/Checked	Purpose of Issue
A	22-03-2017	General update	.	.
B	31-03-2017	General update	.	.
C	13-04-2017	General update	.	.
D	28-04-2017	Pricing Issue	.	.
E	12-05-2017	For Planning	.	.
F	25-05-2017	For Planning	.	.



FOR APPROVAL

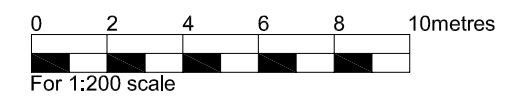
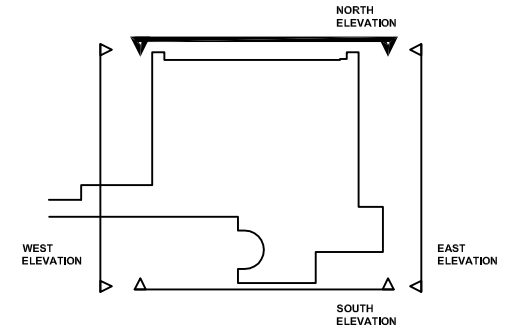
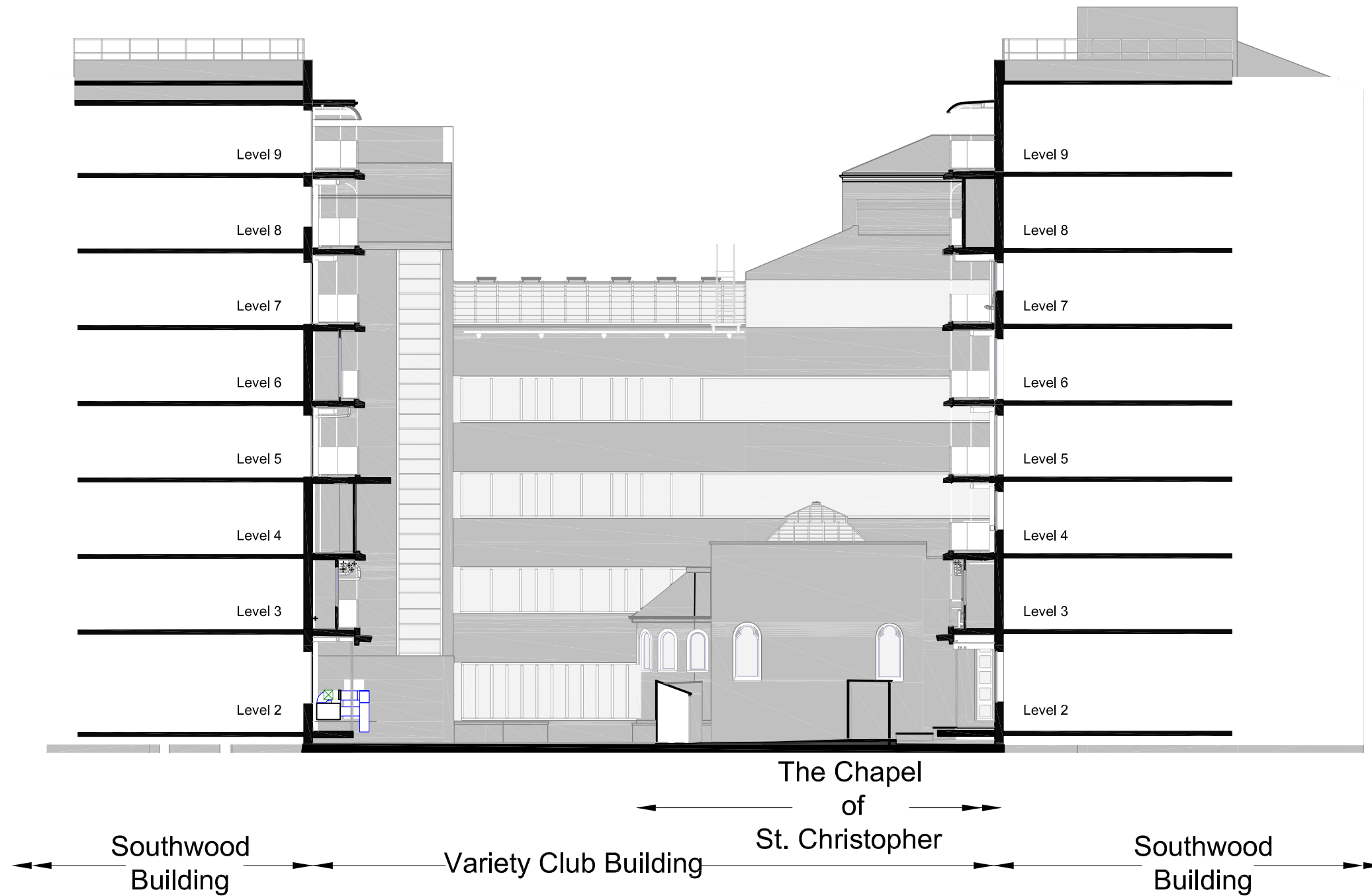
Existing Elevation East	16021 JOB NUMBER	(02)014 DRAWING NUMBER	F REV
Great Ormond Street Hospital for Children - NHS Foundation Trust	Jan 2017 DATE	1:200@A3 SCALE	

Ansell & Bailey LLP Chartered Architects 24-32 Stephenson Way London NW1 2HD 020 7387 0141 architects@ansellandbailey.com

ANSELL + BAILEY

THIS DRAWING IS PROTECTED BY COPYRIGHT - FIGURED DIMENSIONS ONLY TO BE TAKEN FROM THIS DRAWING. DIMENSIONS TO BE CHECKED ON SITE AND ANY DISCREPANCIES REPORTED TO THE ARCHITECT IMMEDIATELY.
 PURPOSE OF ISSUE: (A)FOR COMMENT / CO-ORDINATION (B)FOR INFORMATION (C)FOR APPROVAL (D)FOR TENDER (E)FOR CONSTRUCTION (F)FINAL DESIGN DRAWING

Rev	Rev Date	Revision Description	Drawn/Checked	Purpose of Issue
A	22-03-2017	General update	.	.
B	31-03-2017	General update	.	.
C	13-04-2017	General update	.	.
D	28-04-2017	Pricing Issue	.	.
E	12-05-2017	For Planning	.	.
F	25-05-2017	For Planning	.	.
G	06-06-2017	For Planning	.	.



FOR APPROVAL			
Existing Elevation North	16021 JOB NUMBER	(02)012 DRAWING NUMBER	G REV
Great Ormond Street Hospital for Children - NHS Foundation Trust	Jan 2017 DATE	1:200@A3 SCALE	

Ansell & Bailey LLP Chartered Architects 24-32 Stephenson Way London NW1 2HD 020 7387 0141 architects@ansellandbailey.com

ANSELL + BAILEY