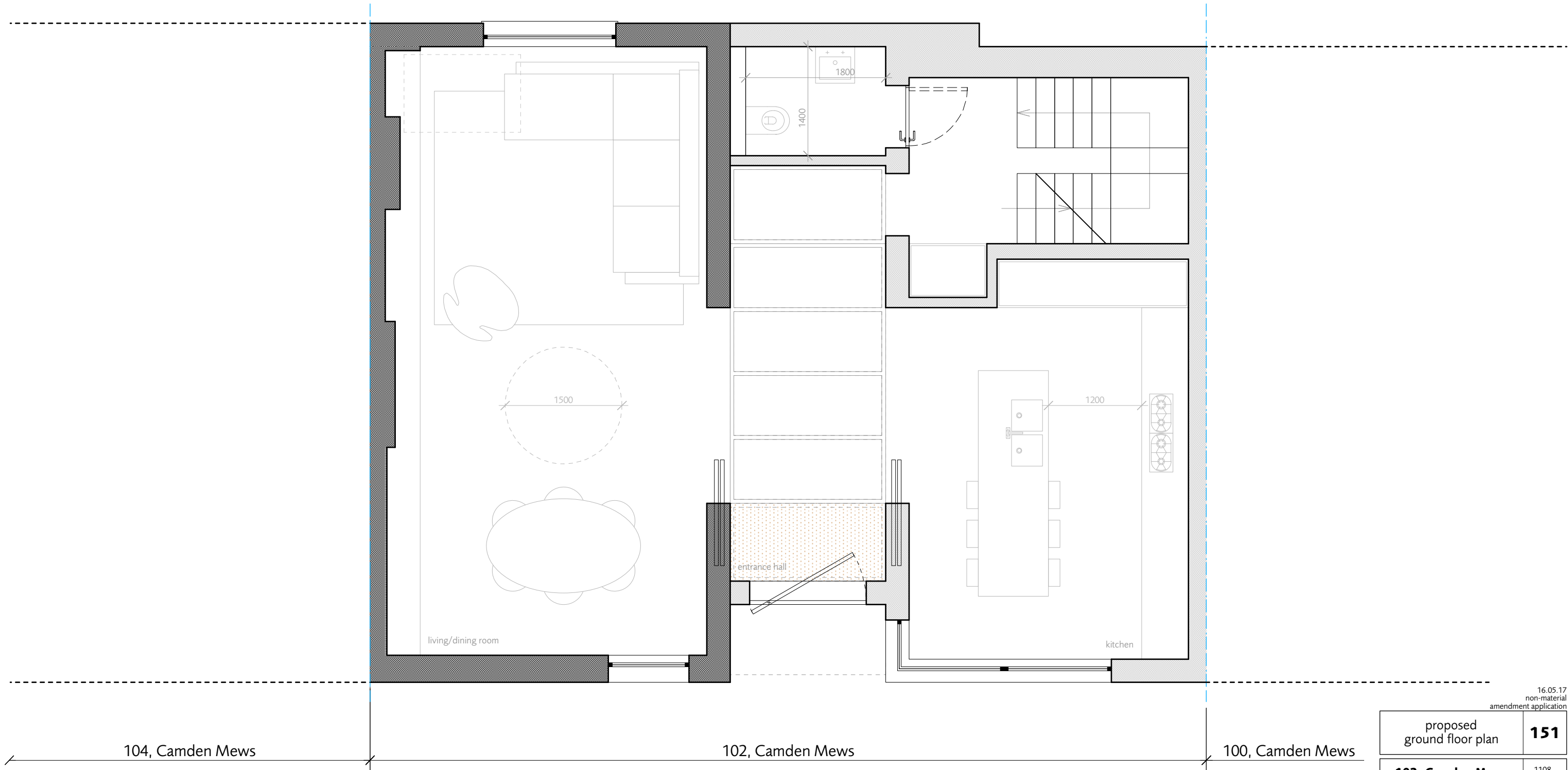


© Dols Wong Architects. This drawing may not be copied, altered or reproduced in any way or passed to a third party without their written authority.  
 report all discrepancies to the architects or engineers before commencing construction or fabrication.  
 read in conjunction with all other relevant architects and engineer drawings, schedules and specifications.  
 do not scale off this drawing ref. noted dims only

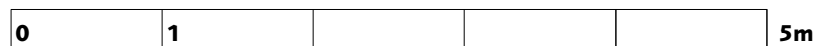
communal garden to the rear of Cliff Road Studios



104, Camden Mews

102, Camden Mews

100, Camden Mews



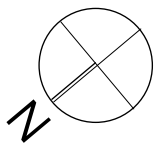
16.05.17  
 non-material  
 amendment application

proposed ground floor plan	<b>151</b>
----------------------------	------------

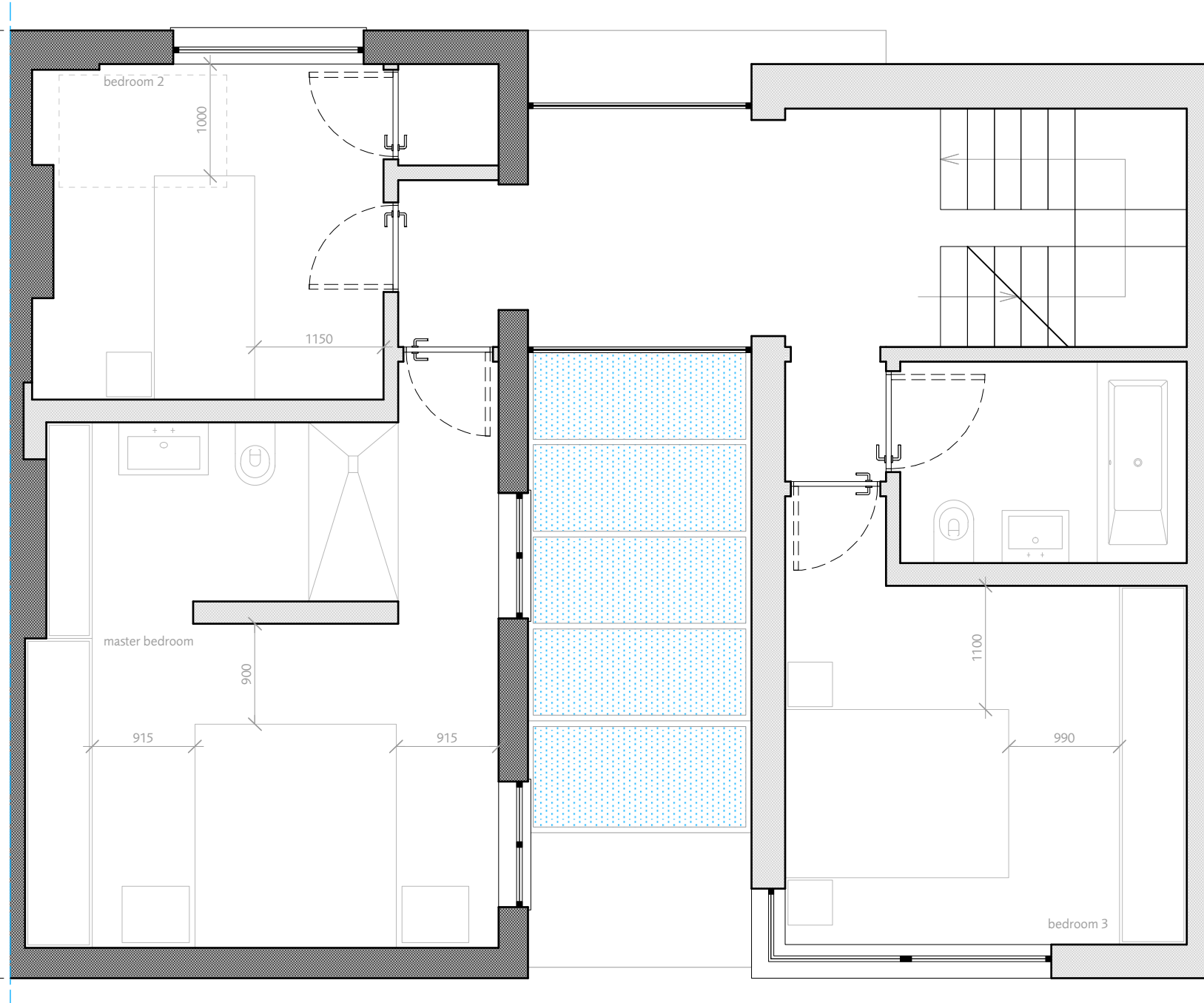
<b>102, Camden Mews</b> London NW1 9AG	1108 1:50 @A3
---	------------------

**Dols Wong**  
architects

The Studio  
 61, Brondesbury Road  
 London NW6 6BP  
 44 (0)20 7372 2121 architects@dols Wong.com



© Dols Wong Architects. This drawing may not be copied, altered or reproduced in any way or passed to a third party without their written authority.  
 report all discrepancies to the architects or engineers before commencing construction or fabrication.  
 read in conjunction with all other relevant architects and engineer drawings, schedules and specifications.  
 do not scale off this drawing ref. noted dims only



16.05.17  
 non-material  
 amendment application

proposed first floor plan	<b>152</b>
---------------------------	------------

<b>102, Camden Mews</b> London NW1 9AG	1108 1:50 @A3
---	------------------

**Dols Wong**  
architects

The Studio  
 61, Brondesbury Road  
 London NW6 6BP  
 44 (0)20 7372 2121 architects@dols Wong.com

© Dols Wong Architects. This drawing may not be copied, altered or reproduced in any way or passed to a third party without their written authority.  
 Report all discrepancies to the architects or engineers before commencing construction or fabrication.  
 Read in conjunction with all other relevant architects and engineer drawings, schedules and specifications.  
 Do not scale off this drawing. Ref. noted dims only.

Painted render to match bricks colour

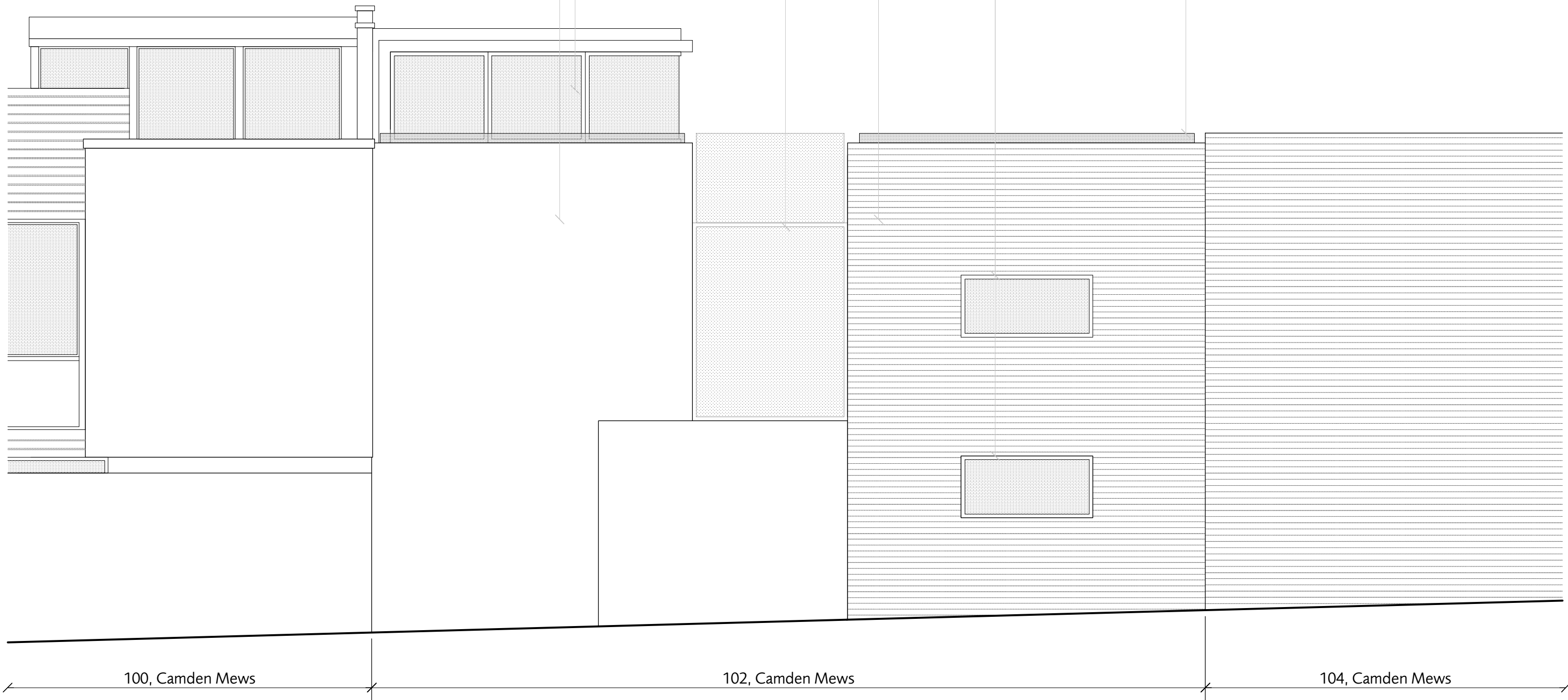
New double glazed aluminum windows (internal timber screen to reduce overlooking)

New glass link building (internal timber screen to reduce overlooking)

Existing painted facing brick wall made good and repainted

New frosted double glazed aluminum windows

Glass balustrade on top of existing wall to reach the required 1100 mm



100, Camden Mews

102, Camden Mews

104, Camden Mews



16.05.17  
 non-material amendment application

proposed rear elevation **160**

**102, Camden Mews**  
 London NW1 9AG  
 1108  
 1:50 @A3

**Dols Wong**  
 architects

The Studio  
 61, Brondesbury Road  
 London NW6 6BP  
 44 (0)20 7372 2121 architects@dols Wong.com