

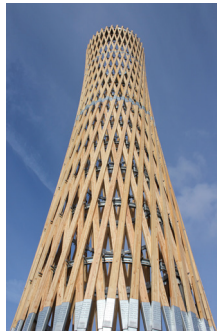
Director CV



Stephen Haskins

BSc CEng MStructE

Founding director



Selected projects

Titan House
Phillimore Gardens
Ennismore Gardens
Brompton Square
Ovington Square

Profile

Stephen graduated from the University of Bath in 1987 and worked with Acer Consultants, Alan Baxter Associates, Dewhurst Macfarlane and Jane Wernick Associates before co-founding engineersHRW in 2001.

Stephen has engineered Hereford and Armagh theatres and the auditoria at Corpus Christi College.

Stephen's enthusiasm for the construction process enabled engineersHRW get involved in complex temporary works projects working for experienced contractors. The knowledge gained from these projects is used to develop our own solutions for challenging engineering projects to achieve the clients' and architects' desired objectives.