



Basement and Excavation Projects

London Bridge
Unit 10,
Blue Lion Place,
237 Long Lane,
London SE1 4PU
020 7407 9575

Oxford
Unit 6,
Standingford House,
26 Cave Street,
Oxford OX4 1BA
01865 251206



Chester Balmore
Passivhaus and CfSH level 4

The Company

EngineersHRW is a firm of structural and civil consultant engineers established in 2001. A private limited company, engineersHRW is financially robust and has increased turnover year-on-year since its formation. We are delighted that in May 2015 engineering consultancy Jane Wernick Associates joined engineersHRW. Jane Wernick Associates was founded in 1998, since when it has established a reputation for innovative and high quality structural engineering.

Our Approach

A fresh approach is taken for every project with structural solutions tailored to the requirements of the client, the end user and the environment. The ten directors and associates are hands-on engineers and are assisted by able senior and graduate engineers, technicians and administrative staff. The organisation and size of the practice ensures each project Director and/or Associate has a working knowledge of all projects.

Sustainability

Issues of sustainability are inherent in our approach. We have provided structural and civil engineering services for Chester Balmore (for the London Borough of Camden) that is the largest Passivhaus designed development in the UK.

Engineering Excellence

EngineersHRW and Jane Wernick Associates have collaborated on many award winning projects. In 2007 we received the most prestigious structural engineering award in the UK : The Institution of Structural Engineers Supreme Award for Engineering Excellence for Savill Gardens Visitor Centre.



The Flint House
RIBA House of the Year 2015

Deliverables

We pride ourselves on being able to deliver appropriate input at each stage of the project. Key to smooth development and construction are enthusiastic and sympathetic engagement with designers and contractors. All staff at engineersHRW are encouraged to think beyond their discipline to pre-empt design and construction issues.

Key decisions are made early in the project and it important that high level input is made at this stage to ensure that appropriate schemes are tested.

EngineersHRW have fully converted to using REVIT software on all projects, no matter what their size.

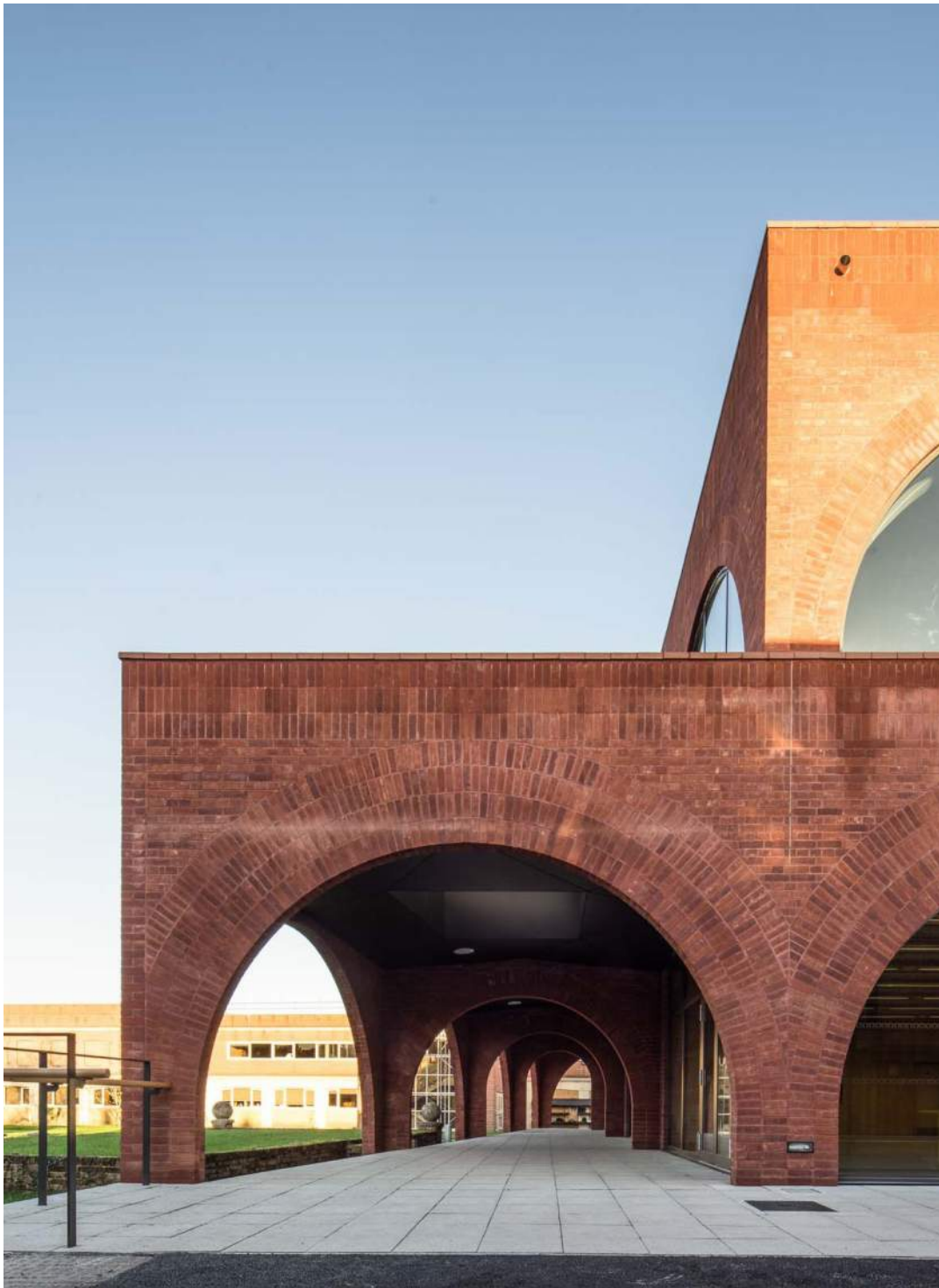
Efficient design

Value for money is an important issue on all projects, more so where any money saved can be spent on facilities that will directly benefit the end users. We ensure that our fee is competitive, yet adequate to allow us to spend adequate time to produce an efficient structural scheme.

50% of engineersHRW work load is on projects with fixed budgets and challenging demands for cost benefit, as a consequence we have become adept at achieving “best value” in structural design. Many of these projects are carried out on behalf of contractors who regularly undertake project audits to ensure costs are controlled and many projects are subject to value engineering processes as a matter of course.

Ways in which we minimise costs in respect to the structural design:

- Early design development to allow different structural forms to be costed.
- Continual review at Director level and in-house peer reviews at key stages.
- By the imaginative use and careful detailing of off-the-shelf products to give a bespoke quality whilst keeping costs to a minimum.
- In conjunction with the team, ensuring a tight co-ordinated well detailed tender package, for which REVIT/BIM is becoming an ever increasingly useful tool.



Brentwood School
Structural masonry arches

Health and Safety Policy

We consider health and safety at work to be of fundamental importance. This applies to our employees, those with whom we collaborate and those for whom we provide professional skills. We take into account the requirements of the Health and Safety at Work etc. Act 1974 and all other relevant acts and regulations.

Diversity

Jane Wernick Associates Ltd. was the winner of the 2011 National Award for Diversity in Construction for Excellence in Performance by an SME. We believe that it is essential to provide equal opportunities to all persons without discrimination in all aspects of employment, including recruitment and promotion. We intend to act fairly and prevent discrimination as defined by the Disability Discrimination Act 1995, regardless of contract status, age, sexual orientation or religion. We comply with all the relevant provisions of the Equality Act 2010. We believe that there are great benefits in having a diverse workforce.

Training and CPD

We are not only committed to recruiting highly qualified staff, but also ensuring that through their ongoing professional development they stay ahead of the latest technical developments and maintain a broad span of knowledge. We achieve this by encouraging and supporting our staff to undertake courses from a range of providers such as the Institution of Structural Engineers, the Institution of Civil Engineers and the Royal Institute of British Architects. We invite outside providers to come to our office to give CPD lectures. We also support staff in working towards chartered membership of the Institution of Civil Engineers or the Institute of Structural Engineers.

Subterranean development experience



REF	PROJECT	LONDON BOROUGH	COST*	NEW BASEMENT UNDER EXISTING BUILDING(S)	NEW BASEMENT UNDER GARDEN OR NEW EXTENSION	LISTED BUILDING
1307	NEVILLE STREET	Kensington and Chelsea	£1.0M			II
1290	THE GROVE, HIGHGATE	Camden	£1.0M			II*
1274	WARWICK AVENUE	Westminster	£3.0M			
1252	CAMPDEN GROVE	Kensington and Chelsea	£1.0M			
1251	STAFFORD TERRACE	Kensington and Chelsea	£0.6M			II*
1213	COLHERNE ROAD	Westminster	£0.6M			
1208	BELGRAVE MEWS	Westminster	£1.0M			I
1203	HARLEY STREET	Camden	£2.0M			II
1197	HAMILTON TERRACE	Westminster	£2.0M			
1178	REDCLIFFE ROAD	Westminster	£1.0M			
1155	PHILLIMORE TERRACE	Kensington and Chelsea	£3.0M			
1153	SHEFFIELD TERRACE	Kensington and Chelsea	£2.0M			
1152	SOUTH EATON PLACE	Westminster	£1.0M			
1148	EGERTON TERRACE	Kensington and Chelsea	£2.0M			
1147	WALTON STREET	Kensington and Chelsea	£2.0M			
1109	STAFFORD TERRACE	Kensington and Chelsea	£1.0M			II*
1100	CHESTER TERRACE	Camden	£2.0M			I
1099	CAMPDEN GROVE	Kensington and Chelsea	£1.0M			
1087	BROMPTON SQUARE	Kensington and Chelsea	£3.0M			II
1053	HORNTON STREET	Kensington and Chelsea	£5.0M			
1051	REDCLIFFE ROAD	Westminster	£2.0M			
1032	THURLOE SQUARE	Kensington and Chelsea	£2.0M			II
1039	WILTON CRESCENT	Kensington and Chelsea	£5.0M			II
1031	ELSWORTHY ROAD	Camden	£0.8M			
1029	BROMPTON SQUARE	Kensington and Chelsea	£4.0M			II
1028	GREENAWAY GARDENS	Camden	£9.0M			
1025	STAFFORD TERRACE	Kensington and Chelsea	£0.5M			II
1024	CLARENDON ROAD	Camden	£1.5M			
1004	YORK TERRACE EAST	Camden	£4.0M			I
981	PARK PLACE	Westminster	£7.0M			
972	CHEVAL PLACE	Kensington and Chelsea	£1.0M			
970	EGERTON CRESCENT	Kensington and Chelsea	£3.5M			II
958	HANOVER TERRACE	Camden	£3.0M			I
951	CANFIELD GARDENS	Camden	£1.5M			
947	CHESTER BALMORE	Camden	£8.0M			
916	ENNISMORE GARDENS	Westminster	£5.0M			
901	WATERHOUSE	Camden	£5.0M			
911	HOME PARK ROAD	Merton	£13.0M			
909	NETHERALL GARDENS	Camden	£2.5M			
894	CHALCOT CRESCENT	Camden	£0.8M			
892	STAFFORD TERRACE	Kensington and Chelsea	£0.5M			II
876	QUEENS GROVE	Camden	£1.5M			
858	FITZROY FARM	Camden	£9.0M			
832	OVINGTON SQUARE	Kensington and Chelsea	£3.0M			
826	WADHAM GARDENS	Camden	£2.0M			
742	MAIDA VALE	Westminster	£2.0M			
783	PHILLIMORE GARDENS	Kensington and Chelsea	£2.5M			II
779	QUEENS GATE MEWS	Kensington and Chelsea	£0.6M			
745	LIMERSTON STREET	Kensington and Chelsea	£6.0M			
698	SHEPHERD MARKET	Westminster	£14.0M			II and II*
685	TREGUNTER ROAD	Kensington and Chelsea	£5.0M			
667	PHILLIMORE GARDENS	Kensington and Chelsea	£10.0M			II
648	PRINCES STREET	Westminster	£9.0M			
411	TITAN HOUSE	Southwark	£12.0M			
178	GREAT TURNSTILE	Camden	£6.0M			
10	SARSONS VINEGAR FACTORY	Southwark	£15.0M			II
			*costs are estimates of costs at completion of project			

Basement structures

We have completed in excess of 100 basement structures involving existing buildings and in the last few years a significant number of these basement extensions are substantial and have involved Listed Buildings. We have worked on a number of Grade 1 Listed buildings around Regents Park.

In addition we are providing advice to the Tanzanian High Commission. The new Bond Street Station and Crossrail tunnels are being constructed adjacent top the Grade 2 Listed Consulate Building and we have provided advice on methods of construction and monitoring proposed by TFL.

The project pictured is Titan House, excavated between two Listed buildings.

In addition to the direct client appointments for work in this sector we are regularly invited by experienced Contractors to design temporary works for complex basement excavation projects. This is valuable experience that we can bring to other projects in the office where we are working as client's consultant engineer. The design of temporary works for multi-storey basements adjacent to existing (many Listed) buildings can be more complex than the design of the permanent works. Most basement projects are constructed tight to neighbouring properties and we have excellent experience working on tight sites with restricted access whilst maximizing basement space.

Although not appointed to undertake temporary works design for the contractor on this project, we have excellent experience of the pre-empting of appropriate methods of construction as a result of working for contractors. We ensure that the proposed structure is sensibly constructible, or at least where the construction is complex, the complexity can be appropriately described and communicated to the contractor.

Selected project



The Maltings

A new build/refurbishment of a listed Victorian site, the site of the former 'Sarsons' vinegar factory. Designed for residential and commercial use, the project utilises extensive underpinning and temporary works to construct full plan area basements adjacent to the listed structures.

Glenn Howells Architects (architect), Sunlight (developer/contractor).
Completed 2007.

Selected project



Titan House

New build hotel with commercial offices and retail at ground floor level and a full plan area basement gym including a swimming pool. The building is clad with precast masonry panels and the structural design allows for the addition of a further storey of accommodation.

Glenn Howells Architects (architect), Sunlight (developer/contractor).
Completed 2010.

Selected project



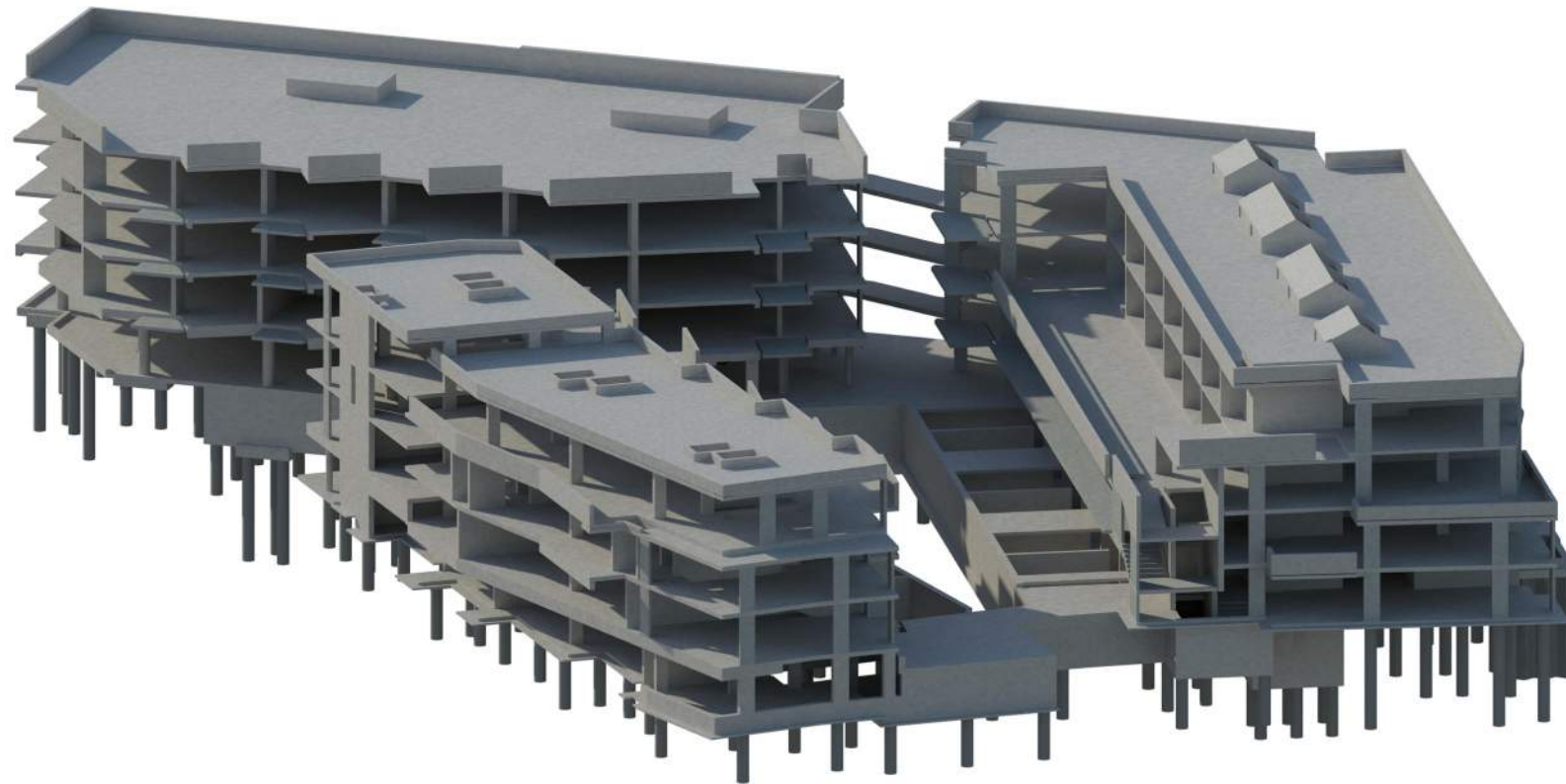
Des Moines Public Library, U.S.A.

Scheme design for a new public library for the city of Des Moines. This new public library acts as a link between downtown Des Moines, and the Western Gateway Park, an area of redevelopment. It was constructed for £12m and completed in 2006. The building is two stories, with a single storey basement car park, and constructed using reinforced concrete. The double glazed skin has a layer of expanded copper mesh between the two sheets that reduces glare and solar gain.

Winner of the RIBA International Award and shortlisted for the Lubetkin Prize 2007.

David Chipperfield Architects (architect). Completed 2006.

Selected project

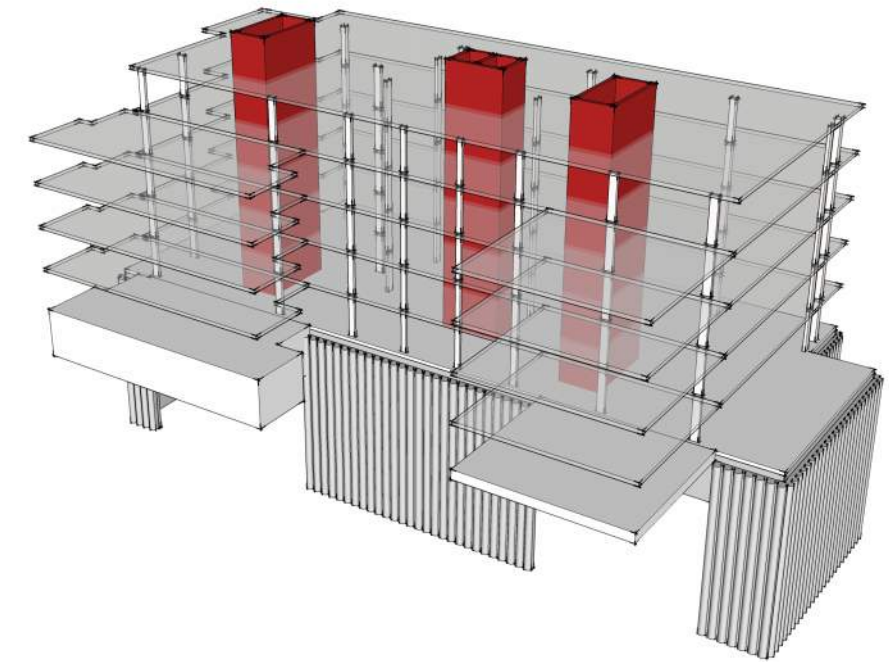


Chester Balmore

This is a development of three residential blocks comprising 57 units where EngineersHRW were appointed by the Client and then appointed by the Contractor. EngineersHRW modelled the structure in Revit. The project has been designed to achieve a BREEAM rating of excellent, CfSH level 4 and Passivhaus standards. A large basement structure under the central block was incorporated for residents parking.

Rick Mather/Architype (architect), Willmott Dixon (contractor). Completed 2014.

Selected project



St Georges Cheltenham

Retention of 19th Century facade and demolition and reconstruction of existing 1970's structure behind to accommodate new retirement home with basement car-parking.

Glenn Howells Architects (architect).

Selected project



Wadham Gardens

Refurbishment and extension of existing property which included a new basement extended beyond the perimeter of the house along two sides. The methodology proposed and adopted by the contractor involved supporting the house above on temporary piles/columns during the basement construction phase.

SHHArchitects (architect), Silver Interiors (contractor). Completed 2012.

Selected project



Wimbledon House

A new build single residence with vast floor space and a distinctive modern aesthetic. The large open internal spaces, quality of applied finishes, desire to use exposed concrete, swimming pool and 40 space car garage all pointed the structure in the direction of a reinforced concrete frame. The architectural design utilizes and plays on the curves required for the car-ramps to access the basement parking.

SHHArchitects (architect), Primus (contractor).

Selected project

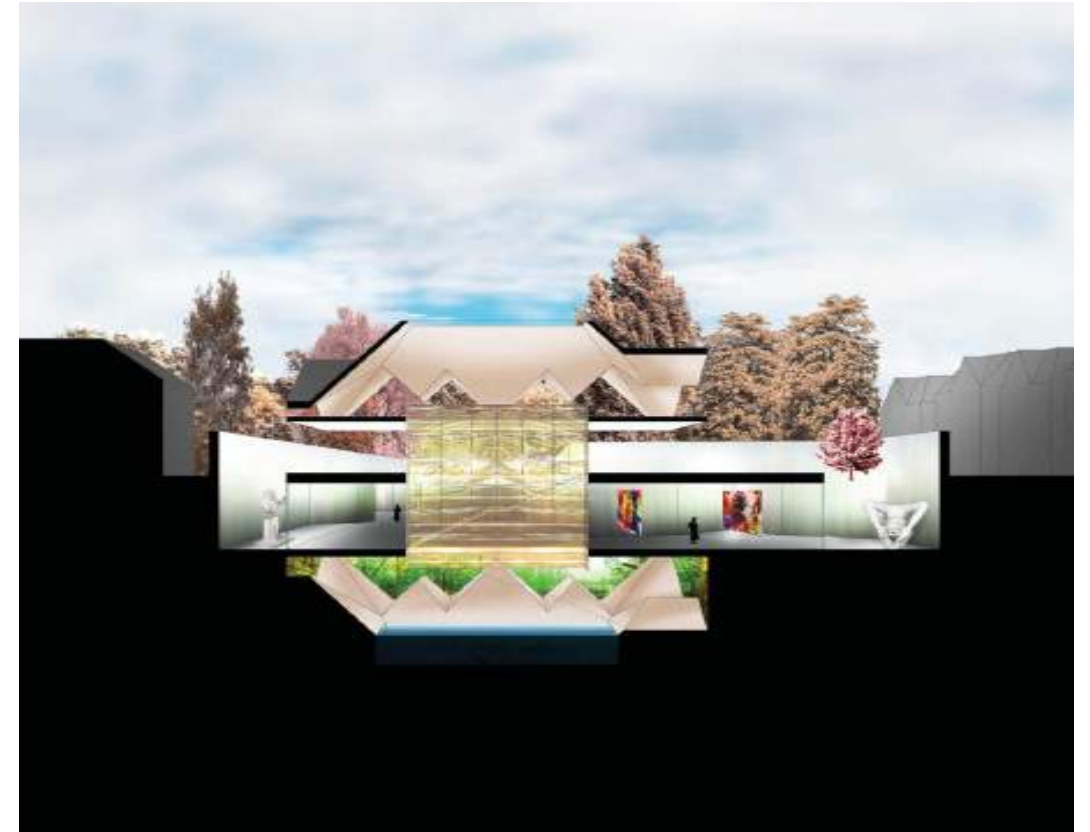


Tregunter Road

EngineersHRW were appointed by Delcon Construction to develop a method statement and design the temporary works associated with the full site excavation of this property. Key to the method was access for a 6.5m high specialist piling rig able to install raking piles, which maximised the basement space. Sandy gravel soils and a high water table added further complexity.

ABA International (architect), Delcon (contractor). Completed 2009.

Selected project



Lancaster Grove

A new double storey basement across the entire site with 4m+ floor to floor to provide gallery space, swimming pool, parking etc. Basement profiled to account for existing trees to be retained. New 3 storey house to be built over new basement on footprint of existing house.

Skene Catling de La Pena (architect).

Selected project



Tor Hill Farm

Extension and refurbishment of a collection of listed buildings in the Dartmoor National Park. The extension was half buried into an adjacent earth bund and uses the in-situ concrete structure as the internal finish, timber boards used as the formwork were re-used as flooring. A green roof and low setting of the pavilion hides it within the landscape of the park.

Levitate Architecture and Design (architect). Completed 2012.

Awards



2015
Flint House, Commonleys with Skene Catling de La Pena Architects
Winner of the RIBA National Award 2015
Winner of the RIBA South Award 2015

Lyndhurst Primary School with Cottrell and Vermeulen Architecture
Shortlisted in the RIBA Regional Awards 2015

2014
Condé Nast College of Fashion and Design with Feilden Clegg Bradley Studios
AJ Retrofit Award 2014 For Higher Education Under £5 Million

Rainham Trackway with Peter Beard_LANDROOM
Architecture as Landscaping Award: Galvanizers Association Galvanizing Awards 2014
Commendation at the New London Awards 2014

East Ham Civic Campus and Library with Rick Mather Architects
Shortlisted in the New London Awards, June 2014

Regents Park Zoo with SHH Architects
Shortlisted in the New London Awards, June 2014

2013
Strand East Tower with ARC-ML Architects / LandProp
Shortlisted in the IStructE 2013 Structural Awards

Shatwell Farm with Stephen Taylor Architects
GAGA Award, 2013
RIDBA Farming & Agricultural Building Award, 2013

2012
The Henrietta Barnett School with Hopkins Architects
RIBA London Award 2012

Living Architecture: The Dune House with Jarmund/Vignsnes Architects
RIBA East Award 2012

South London Gallery with 6a Architects
Civic Trust Awards 2012: Commendation

Brentwood School with Cottrell and Vermeulen Architecture
RIBA Award, 2012
Shortlisted/ Highly Commended in the RICS Awards, 2012

2011
National Award for Diversity
in Construction for Excellence in Performance by an SME



South London Gallery with 6a Architects
New London Award 2011

Living Architecture: The Balancing Barn with MVRDV and Mole Architects
RIBA Regional Award 2011
Conde Nast Traveller Innovation & Design Award 2011
Red Dot Design Award

Living architecture: Shingle House with NORD Architects
RIBA Regional Award 2011

RSPB Rainham Marshes: Marshland Discovery Zone with Peter Beard_LANDROOM
RIBA Regional Award 2011

Gibbs Green School with Surface to Air Architects
Civic Trust Award, 2011

Westborough School with Cottrell and Vermeulen Architecture
RIBA Award, 2011

Alleyn Park with StudioMEDA
Shortlisted in the AJ Small Project Awards, 2011

2010
Corpus Christi with Rick Mather Architects
RIBA Award, 2010

Krishna Avanti with Cottrell and Vermeulen Architecture
Harrow Environmental Award 2010
Shortlisted for the Woods Award, 2010
BREEAM rated 'Excellent' Award, May 2010

2009
The Møller Centre with dsdha Architects
RIBA Regional Award 2009

Xstrata Tree Top Walkway and Rhizotron, Kew with Marks Barfield Architects
The ICE Special Award: Best Integrated Design 2009
Civic Trust Award 2009
RIBA Regional Award 2009
A Structural Steel Design Award 2009

2008
St. Anne's Sure Start & Community Centre with dsdha Architects
A Colchester2020 and RIBA Award 2008

The Singing Ringing Tree with Tonkin Liu
Certificate of Merit from the Structural Steel Design Awards

Awards



Cremorne Boating Centre with Sarah Wigglesworth Architects
RIBA Regional Award 2008

Oundle SciTec with Feilden Clegg Bradley Studios
RIBA Regional Award 2008

Xstrata Tree Top Walkway and Rhizotron, Kew with Marks Barfield Architects
Conde Nast Traveller Innovation and Design Award

BBC Scotland with David Chipperfield Architects
RIBA National Award
ICE Scotland Design Commendation

The Young Vic Theatre with Haworth Tompkins Architects
Full Award:Civic Trust Awards, Newcastle Upon Tyne
Winner of the British Construction Industry 2008 Building Award.

The Lightbox, Woking with Marks Barfield Architects
Full Award:Civic Trust Awards, Newcastle Upon Tyne
RIBA Regional Award 2008
The Art Fund Prize for museums and galleries 2008
Wysing Arts with Haskins Brown Architects
RIBA Award, July 2008

2007
Savill Gardens with Glenn Howells Architects
IStructE Awards, Winner for Engineering Excellence 2007
IStructE Awards, Winner for Arts, Entertainment & Leisure Structure 2007
Civic Trust Award, 2007
RIBA Award, 2007
BCI Award 2007
AJ Shortlisted for the Stirling Prize, 2007

ss Great Britain with Julian Harrap Architects
RIBA Crown Estate Heritage Award

The Cass Sculpture Foundation in Goodwood with Studio Downie Architects
RIBA Regional Award
BCI Small Building of the Year Award

Des Moines Public Library with David Chipperfield Architects
RIBA International Award
Shortlisted for the Lubetkin Prize

The Maggie's Centre with Zaha Hadid
American Institute of Architects UK Chapter Excellence in Design Award
Shortlisted for the RIAS Andrew Doolan Award
Shortlisted for the LEAF New Build of the Year Award



The Singing Ringing Tree with Tonkin Liu
RIBA National Award
RIBA Regional Award
Shortlisted for the Stephen Lawrence Award

The Young Vic Theatre with Haworth Tompkins Architects
RIBA London Building of the Year Award
RIBA National Award
Certificate of Merit from the Structural Steel Design Awards
Highly Commended for ICE London Merit Award
Shortlisted for the Leaf New Build of the Year Award
Shortlisted for the Stirling Prize

2005
NDNA with Cottrell and Vermeulen Architecture
RIBA Award, 2005

2004
The Gormley Studio Vale Royal with David Chipperfield Architects
First Prize in the Galvanizers' Association Galvanized Steel Awards
RIBA Regional Award

Kielder Minotaur with Nick Coombe and Shona Kitchen
RIBA Award, 2004

2003
Ernsting Family Campus with David Chipperfield Architects
RIBA Regional Award

Branksome Chine Cafe with Diamond Architects
Poole Pride of Place Award

2002
Clearwater Garden at the Chelsea 2002 flower show with Sarah Wigglesworth Architects
Silver Medal

Ernsting Family Campus with David Chipperfield Architects
Shortlisted for Stirling Prize

Oki-Ni with 6a Architects
D&AD Silver Award for Outstanding Retail Design

2000
Millennium Wheel with Marks Barfield Architects and Hollandia Contractors
Corus Construction Awards

Directors



Stephen Haskins

BSc CEng MIStructE
Director

Stephen Haskins graduated from the University of Bath in 1987 and has worked with Roughton and Fenton, Acer Consultants, Alan Baxter Associates and Dewhurst Macfarlane and Partners becoming an associate in 1997. In 1999 he formed his own practice and is a founding director of engineersHRW.

Stephen's enthusiasm for the construction process sees engineersHRW get involved in complex temporary works projects working for experienced contractors. The knowledge gained from these projects is used to develop our own solutions for challenging engineering projects to achieve the clients' and architects' desired objectives.



Simon Robinson

BSc CEng MIStructE
Director

Simon Robinson graduated from the University of Manchester in 1986. He worked with Kirk McClure and Morton in Belfast before moving to London to work, first with Alan Baxter and Associates and then JSA Consulting Engineers becoming an associate in 1998. Simon is a founding director of engineersHRW.

Within engineersHRW Simon has headed a group engineering a number of difficult inner city sites requiring full plan area basements, retained facades and complex phased construction for phased occupation.



Martin Waters

MEng DipArch CEng MIStructE
Director

Martin Waters graduated in engineering from Leeds University in 1993 and in architecture from University of East London and has worked with Taylor Woodrow, Dewhurst Macfarlane and Partners, Buro Happold, and is a founding director of engineersHRW.

Martin's expansive ideas on structure, when expressed and developed during the early architectural stages of a project often result in award winning buildings and provide a clear narrative for the rest of the project.



Jane Wernick

CBE FREng Hon FRIBA FRSA CEng
FIStructE FICE
Director

Jane has extensive experience of unusual and challenging structures designed in collaboration with leading architects. She worked at Arup for many years, including running the Los Angeles office from 1986 to 1988, and was the engineer behind the structural design of the Millennium Wheel. In 1998 she founded Jane Wernick Associates.

She is a member of numerous panels such as Design Council Cabe, the EDGE and Building Futures, while "Building Happiness - Architecture to make you smile", which she edited, discusses contemporary ideas and debates around the nature of the built environment.



Adam Redgrove

BEng
Director

Adam graduated from the University of Leeds in 1997. Following six months teaching English in India he joined Hannah Reed & Associates in Cambridge. After a years site secondment with Laing O'Rourke he joined Adams Kara Taylor in London, becoming an Associate in 2007.

Adam's natural interest and enthusiasm for the wider aspects of projects ensures an integrated approach which ensures that strategic structural decisions are made on a fully informed basis.

engineersHRW London Bridge
Unit 10, Blue Lion Place, 237 Long Lane, London SE1 4PU
020 7407 9575

engineersHRW Oxford
Unit 6, Standingford House, 26 Cave Street, Oxford OX4 1BA
01865 251206

www.ehrw.co.uk