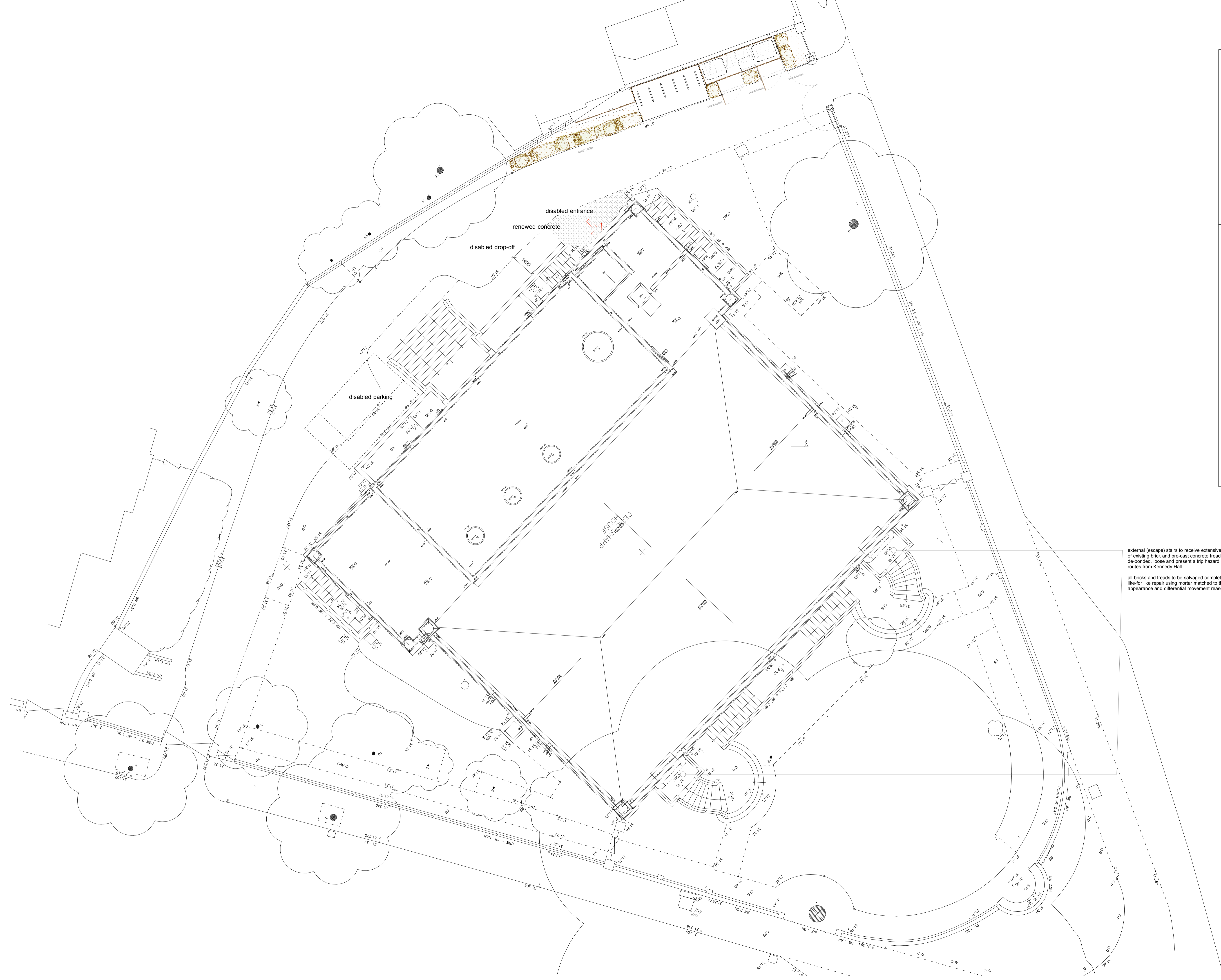


scale 1:100 2.5m 10.0m

Arts Lettres Techniques Limited 2012 copyright is retained ©



external (escape) stairs to receive extensive re-bonding of existing brick and pre-cast concrete treads that are currently de-bonded, loose and present a trip hazard on these main escape routes from Kennedy Hall.

all bricks and treads to be salvaged complete and re-used in a like-for-like repair using mortar matched to the existing mix for appearance and differential movement reasons.

arts lettres techniques ARCHITECT copyright is retained ©
31A ARLINGTON ROAD LONDON NW1 7EL T: (020) 7383 4778
alan.chandler@artslt.co.uk
PROJECT CECIL SHARP HOUSE NUMBER CSH 100 SCALE 1:100 @ A1
SUBJECT SITE PLAN proposed REVISION B DATE 01/08/12

revision
B 12.11.12 refuse storage added
A 12.11.12