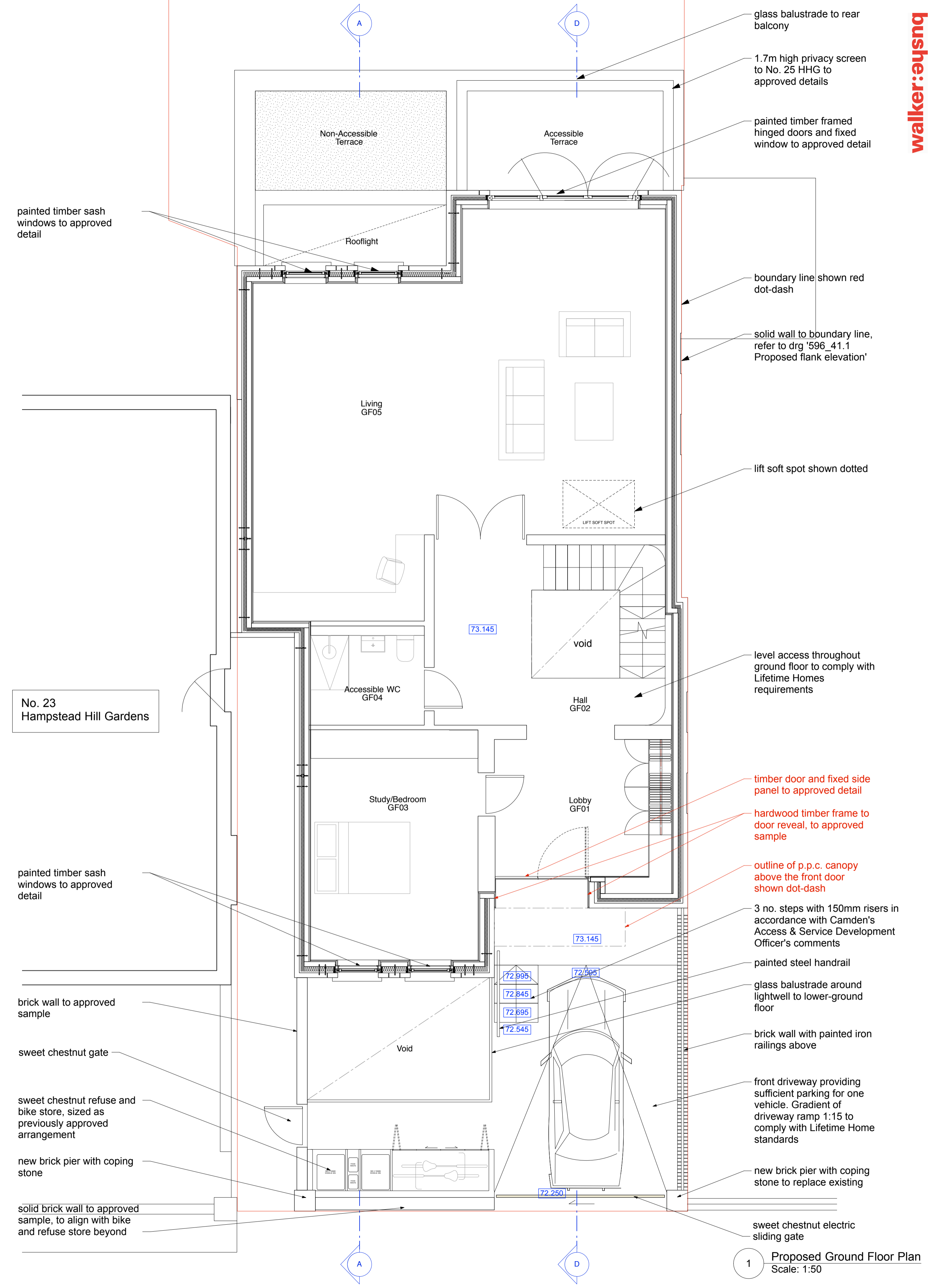


0m 1m 5m 10m



REVISIONS	
A	21/8/15 for coordination
B	11/9/15 front door site omitted, levels changed, accessible terrace reduced
C	12/9/15 internal door control and platform lift added
D	8/10/15 planning application
E	25/10/15 minor material amendment
F	18/11/15 minor material amendment
G	18/11/15 minor material amendment privacy screen to 25 HHG added
H	19/11/15 minor material amendment doors to WF rooms, 'GF03 study/bedroom' & 'GF04 WC' have been amended in accordance with Camden's Access & Services Development Officer's comments
I	18/12/15 minor material amendment sweet chestnut fence removed and replaced with a solid brick wall
J	8/12/16 non material amendment front door and canopy detail revised, issued for comment
K	19/1/17 NMA application front door arrangement
L	8/2/17 front door revised, issued for comment
M	5/6/17 NMA application for revised front door, removal LGF arch and additional rooflight

planning

DRAWING NOT TO BE SCALED.
ALL DIMENSIONS TO BE CHECKED ON SITE.
 REFER TO ALL OTHER RELEVANT DRAWINGS AND SPECIFICATIONS.
 IN CASE OF ANY DISCREPANCY OR AMBIGUITY REFER TO CA

PROJECT	Hampstead Hill Gardens
DRAWING	Proposed GF plan
SCALE	1:50 @ A1
DATE	Dec-15
DRAWING	596_21.1
REV	M

Walker Bushe Architects
Buildings and Interiors
 6 Highbury Corner
 Highbury Crescent
 London N5 1RD
 020 7697 0707
 020 7697 0808
 studio@walkerbushe.co.uk