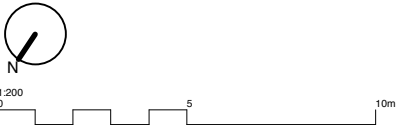


A	23.03.17	Planning and Advertisements
REV	DATE	COMMENT



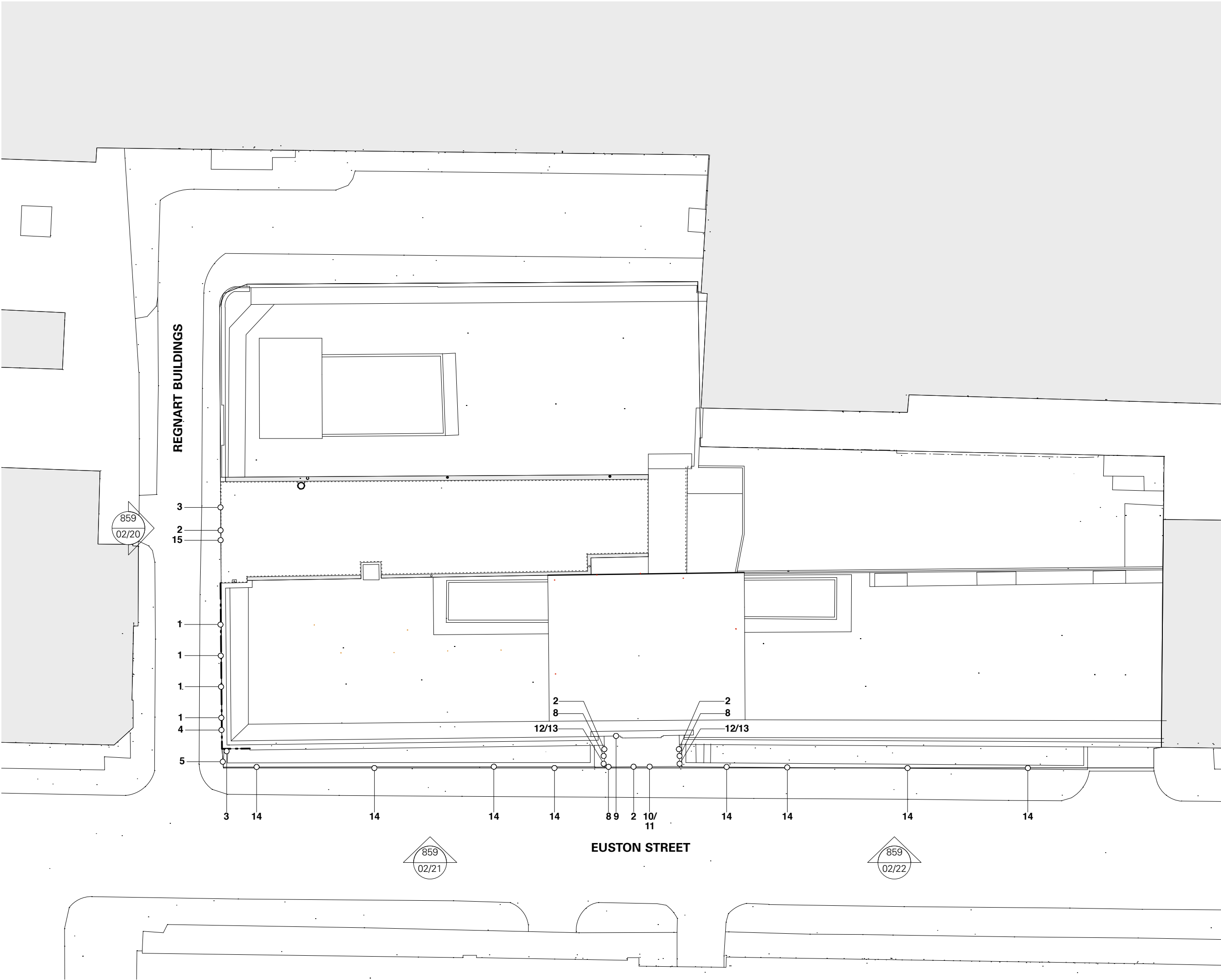
NOTES  
Do not scale from this drawing. All dimensions to be confirmed on site. Architect to be informed of any discrepancies before any action is taken. This drawing is copyright © Manalo & White Ltd.

**MANALO  
&WHITE**  
ARCHITECTS

UNIT 301, METROPOLITAN WHARF BUILDING,  
70 WAPPING WALL, LONDON E1W 3SS  
T 02072654945 E mail@manaloandwhite.co.uk

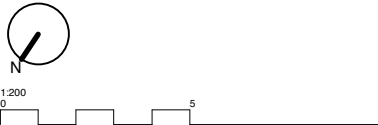
PROJECT  
METHODIST INTERNATIONAL CENTRE  
DRAWING  
PROP GA Plan  
SCALE  
1:200 @ A3  
STATUS  
Planning

DRAWING No.	REVISION
859/02/01	A



- 1 Fixed LED wallwash light. White, 3000-4000K
- 2 Fixed linear LED light illuminating signage. White, 3000-4000K
- 3 Traditional non-illuminated projecting sign. Approximately 900 x 600mm
- 4 Menu board. Illuminated with LED strip. Approximately 315 x 400mm
- 5 Daily menu blackboard fixed to railings. Approximately 800 x 1000mm
- 6 Omitted
- 7 Omitted
- 8 Patterned stainless steel fascia
- 9 Existing doors to remain
- 10 Text approximately 2500 x 250mm
- 11 Graphic overall size approximately 1800 x 850mm
- 12 Text approximately 1250 x 125mm
- 13 Graphic overall size approximately 900 x 425mm
- 14 Facade floodlighting
- 15 Fascia signage

C	30.05.17	Planning and Advertisements
B	05.05.17	Planning and Advertisements
A	23.03.17	Planning and Advertisements
REV	DATE	COMMENT



NOTES  
Do not scale from this drawing. All dimensions to be confirmed on site. Architect to be informed of any discrepancies before any action is taken. This drawing is copyright © Manalo & White Ltd.

**MANALO & WHITE**  
ARCHITECTS  
UNIT 301, METROPOLITAN WHARF BUILDING,  
70 WAPPING WALL, LONDON E1W 3SS  
T 02072654945 E mail@manaloandwhite.co.uk

PROJECT  
METHODIST INTERNATIONAL CENTRE  
DRAWING  
PROP GA Plan  
SCALE  
1:200 @ A3  
STATUS  
Planning

DRAWING No.	REVISION
859/02/01	C



- 1 Fixed LED wallwash light. White, 3000-4000K
- 2 Fixed linear LED light illuminating signage. White, 3000-4000K
- 3 Traditional non-illuminated projecting sign. Approximately 900 x 600mm
- 4 Menu board. Illuminated with LED strip. Approximately 315 x 400mm
- 5 Daily menu blackboard fixed to railings. Approximately 800 x 1000mm
- 6 Omitted
- 7 Omitted
- 8 Patterned stainless steel fascia
- 9 Existing doors to remain
- 10 Text approximately 2500 x 250mm
- 11 Graphic overall size approximately 1800 x 850mm
- 12 Text approximately 1250 x 125mm
- 13 Graphic overall size approximately 900 x 425mm
- 14 Facade floodlighting
- 15 Fascia signage

B	30.05.17	Planning and Advertisements
A	24.03.17	Planning and Advertisements
REV	DATE	COMMENT

GA ELEV

859

02/21

859

02/22



NOTES  
Do not scale from this drawing. All dimensions to be confirmed on site. Architect to be informed of any discrepancies before any action is taken. This drawing is copyright © Manalo & White Ltd.

MANALO & WHITE ARCHITECTS

UNIT 301, METROPOLITAN WHARF BUILDING,  
70 WAPPING WALL, LONDON E1W 3SS  
T 02072654945 E mail@manaloandwhite.co.uk

PROJECT  
THE WESLEY EUSTON

DRAWING  
PROP Regnart Bldgs Elevation

SCALE  
1:100 @ A3

STATUS  
Planning

DRAWING No.	REVISION
859/02/20	B



- 1 Fixed LED wallwash light. White, 3000-4000K
- 2 Fixed linear LED light illuminating signage. White, 3000-4000K
- 3 Traditional non-illuminated projecting sign. Approximately 900 x 600mm
- 4 Menu board. Illuminated with LED strip. Approximately 315 x 400mm
- 5 Daily menu blackboard fixed to railings. Approximately 800 x 1000mm
- 6 Omitted
- 7 Omitted
- 8 Patterned stainless steel fascia
- 9 Existing doors to remain
- 10 Text approximately 2500 x 250mm
- 11 Graphic overall size approximately 1800 x 850mm
- 12 Text approximately 1250 x 125mm
- 13 Graphic overall size approximately 900 x 425mm
- 14 Facade floodlighting
- 15 Fascia signage

B	30.05.17	Planning and Advertisements
A	24.03.17	Planning and Advertisements
REV	DATE	COMMENT

1:100  
0 1 2 3m

NOTES  
Do not scale from this drawing. All dimensions to be confirmed on site. Architect to be informed of any discrepancies before any action is taken. This drawing is copyright © Manalo & White Ltd.

**MANALO & WHITE**  
ARCHITECTS

UNIT 301, METROPOLITAN WHARF BUILDING,  
70 WAPPING WALL, LONDON E1W 3SS  
T 02072654945 E mail@manaloandwhite.co.uk

PROJECT  
THE WESLEY EUSTON

DRAWING  
PROP Euston Street Elevation

SCALE  
1:100 @ A3

STATUS  
Planning

DRAWING No.  
**859/02/21**

REVISION  
**B**

ELEVATION CONTINUES ON 859/02/21

EXTENT OF 81-103 EUSTON STREET



- 1 Fixed LED wallwash light. White, 3000-4000K
- 2 Fixed linear LED light illuminating signage. White, 3000-4000K
- 3 Traditional non-illuminated projecting sign. Approximately 900 x 600mm
- 4 Menu board. Illuminated with LED strip. Approximately 315 x 400mm
- 5 Daily menu blackboard fixed to railings. Approximately 800 x 1000mm
- 6 Omitted
- 7 Omitted
- 8 Patterned stainless steel fascia
- 9 Existing doors to remain
- 10 Text approximately 2500 x 250mm
- 11 Graphic overall size approximately 1800 x 850mm
- 12 Text approximately 1250 x 125mm
- 13 Graphic overall size approximately 900 x 425mm
- 14 Facade floodlighting
- 15 Fascia signage

B	30.05.17	Planning and Advertisements
A	24.03.17	Planning and Advertisements
REV	DATE	COMMENT



NOTES  
Do not scale from this drawing. All dimensions to be confirmed on site. Architect to be informed of any discrepancies before any action is taken. This drawing is copyright © Manalo & White Ltd.

**MANALO & WHITE**  
ARCHITECTS

UNIT 301, METROPOLITAN WHARF BUILDING,  
70 WAPPING WALL, LONDON E1W 3SS  
T 02072654945 E mail@manaloandwhite.co.uk

PROJECT  
THE WESLEY EUSTON

DRAWING  
PROP Euston Street Elevation

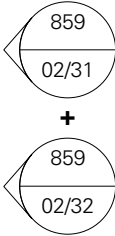
SCALE  
1:100 @ A3

STATUS  
Planning

DRAWING No. **859/02/22** REVISION **B**



- 1 Fixed LED wallwash light. White, 3000-4000K
- 2 Fixed linear LED light illuminating signage. White, 3000-4000K
- 3 Traditional non-illuminated projecting sign. Approximately 900 x 600mm
- 4 Menu board. Illuminated with LED strip. Approximately 315 x 400mm
- 5 Daily menu blackboard fixed to railings. Approximately 800 x 1000mm
- 6 Omitted
- 7 Omitted
- 8 Patterned stainless steel fascia
- 9 Existing doors to remain
- 10 Text approximately 2500 x 250mm
- 11 Graphic overall size approximately 1800 x 850mm
- 12 Text approximately 1250 x 125mm
- 13 Graphic overall size approximately 900 x 425mm
- 14 Facade floodlighting
- 15 Fascia signage



B	30.05.17	Planning and Advertisements
P1	22.05.17	Preliminary Issue to Client
A	24.03.17	Planning and Advertisements
REV	DATE	COMMENT

NOTES  
Do not scale from this drawing. All dimensions to be confirmed on site. Architect to be informed of any discrepancies before any action is taken. This drawing is copyright © Manalo & White Ltd.

**MANALO & WHITE**  
ARCHITECTS

UNIT 301, METROPOLITAN WHARF BUILDING,  
70 WAPPING WALL, LONDON E1W 3SS  
T 02072654945 E mail@manaloandwhite.co.uk

PROJECT  
THE WESLEY EUSTON

DRAWING  
PROP Regnart Bldgs Partial Elevation

SCALE  
1:50 @ A3

STATUS  
Planning



- 1 Fixed LED wallwash light. White, 3000-4000K
- 2 Fixed linear LED light illuminating signage. White, 3000-4000K
- 3 Traditional non-illuminated projecting sign. Approximately 900 x 600mm
- 4 Menu board. Illuminated with LED strip. Approximately 315 x 400mm
- 5 Daily menu blackboard fixed to railings. Approximately 800 x 1000mm
- 6 Omitted
- 7 Omitted
- 8 Patterned stainless steel fascia
- 9 Existing doors to remain
- 10 Text approximately 2500 x 250mm
- 11 Graphic overall size approximately 1800 x 850mm
- 12 Text approximately 1250 x 125mm
- 13 Graphic overall size approximately 900 x 425mm
- 14 Facade floodlighting
- 15 Fascia signage

B	30.05.17	Planning and Advertisements
A	24.03.17	Planning and Advertisements
REV	DATE	COMMENT

1:50  
0 1 2m

NOTES  
Do not scale from this drawing. All dimensions to be confirmed on site. Architect to be informed of any discrepancies before any action is taken. This drawing is copyright © Manalo & White Ltd.

**MANALO & WHITE**  
ARCHITECTS

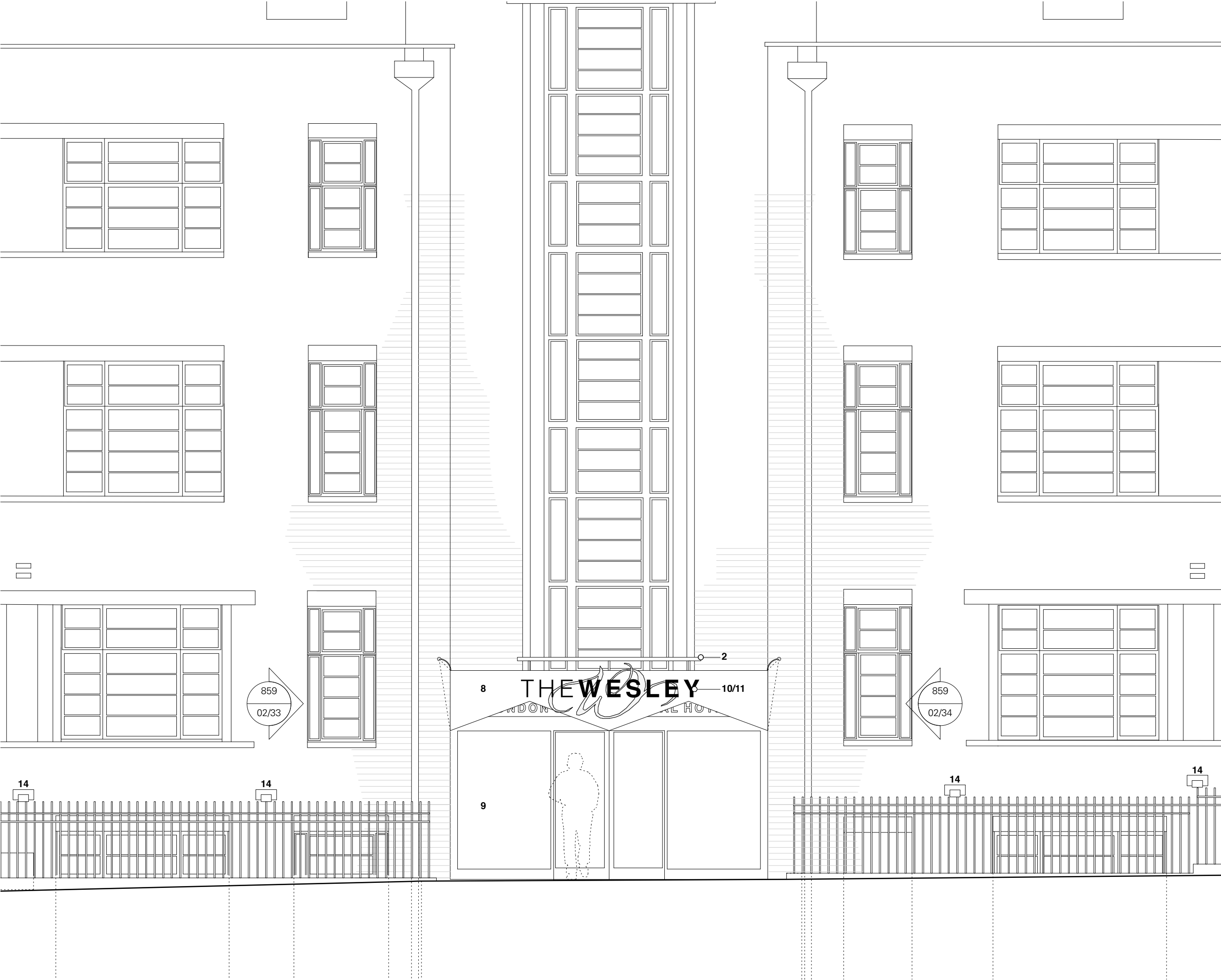
UNIT 301, METROPOLITAN WHARF BUILDING,  
70 WAPPING WALL, LONDON E1W 3SS  
T 02072654945 E mail@manaloandwhite.co.uk

PROJECT  
THE WESLEY EUSTON

DRAWING  
PROP Euston Street Partial Elevation

SCALE  
1:50 @ A3

STATUS  
Planning



- 1 Fixed LED wallwash light. White, 3000-4000K
- 2 Fixed linear LED light illuminating signage. White, 3000-4000K
- 3 Traditional non-illuminated projecting sign. Approximately 900 x 600mm
- 4 Menu board. Illuminated with LED strip. Approximately 315 x 400mm
- 5 Daily menu blackboard fixed to railings. Approximately 800 x 1000mm
- 6 Omitted
- 7 Omitted
- 8 Patterned stainless steel fascia
- 9 Existing doors to remain
- 10 Text approximately 2500 x 250mm
- 11 Graphic overall size approximately 1800 x 850mm
- 12 Text approximately 1250 x 125mm
- 13 Graphic overall size approximately 900 x 425mm
- 14 Facade floodlighting
- 15 Fascia signage

B	30.05.17	Planning and Advertisements
A	24.03.17	Planning and Advertisements
REV	DATE	COMMENT

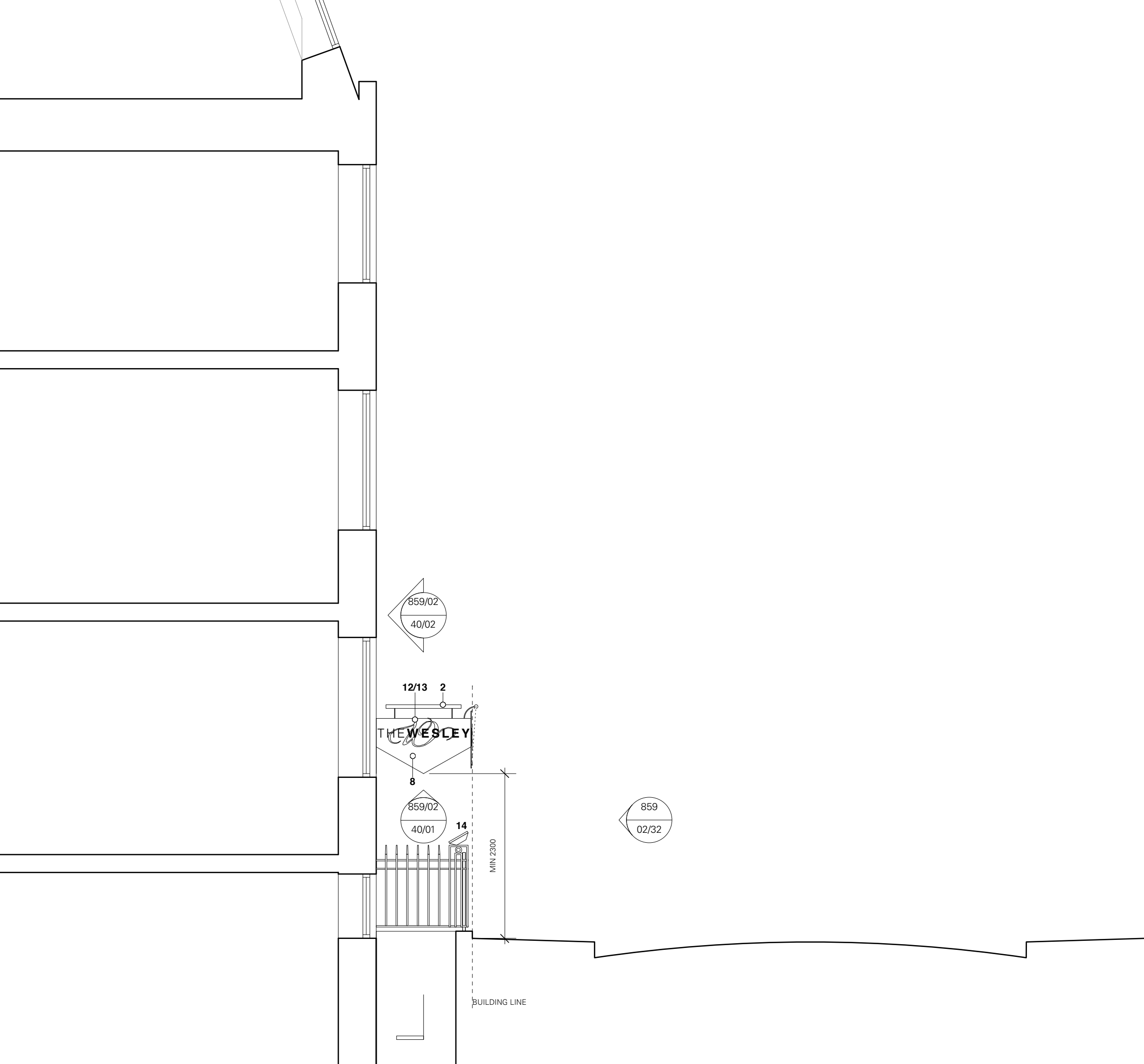
1:50  
0 1 2m

NOTES  
Do not scale from this drawing. All dimensions to be confirmed on site. Architect to be informed of any discrepancies before any action is taken. This drawing is copyright © Manalo & White Ltd.

**MANALO & WHITE**  
ARCHITECTS  
UNIT 301, METROPOLITAN WHARF BUILDING,  
70 WAPPING WALL, LONDON E1W 3SS  
T 02072654945 E mail@manaloandwhite.co.uk

PROJECT  
THE WESLEY EUSTON  
DRAWING  
PROP Euston Street Entrance Elevation  
SCALE  
1:50 @ A3  
STATUS  
Planning

DRAWING No.  
**859/02/32**  
REVISION  
**B**



- 1 Fixed LED wallwash light. White, 3000-4000K
- 2 Fixed linear LED light illuminating signage. White, 3000-4000K
- 3 Traditional non-illuminated projecting sign. Approximately 900 x 600mm
- 4 Menu board. Illuminated with LED strip. Approximately 315 x 400mm
- 5 Daily menu blackboard fixed to railings. Approximately 800 x 1000mm
- 6 Omitted
- 7 Omitted
- 8 Patterned stainless steel fascia
- 9 Existing doors to remain
- 10 Text approximately 2500 x 250mm
- 11 Graphic overall size approximately 1800 x 850mm
- 12 Text approximately 1250 x 125mm
- 13 Graphic overall size approximately 900 x 425mm
- 14 Facade floodlighting
- 15 Fascia signage

B	30.05.17	Planning and Advertisements
A	24.03.17	Planning and Advertisements
REV	DATE	COMMENT



NOTES  
Do not scale from this drawing. All dimensions to be confirmed on site. Architect to be informed of any discrepancies before any action is taken. This drawing is copyright © Manalo & White Ltd.

**MANALO & WHITE**  
ARCHITECTS

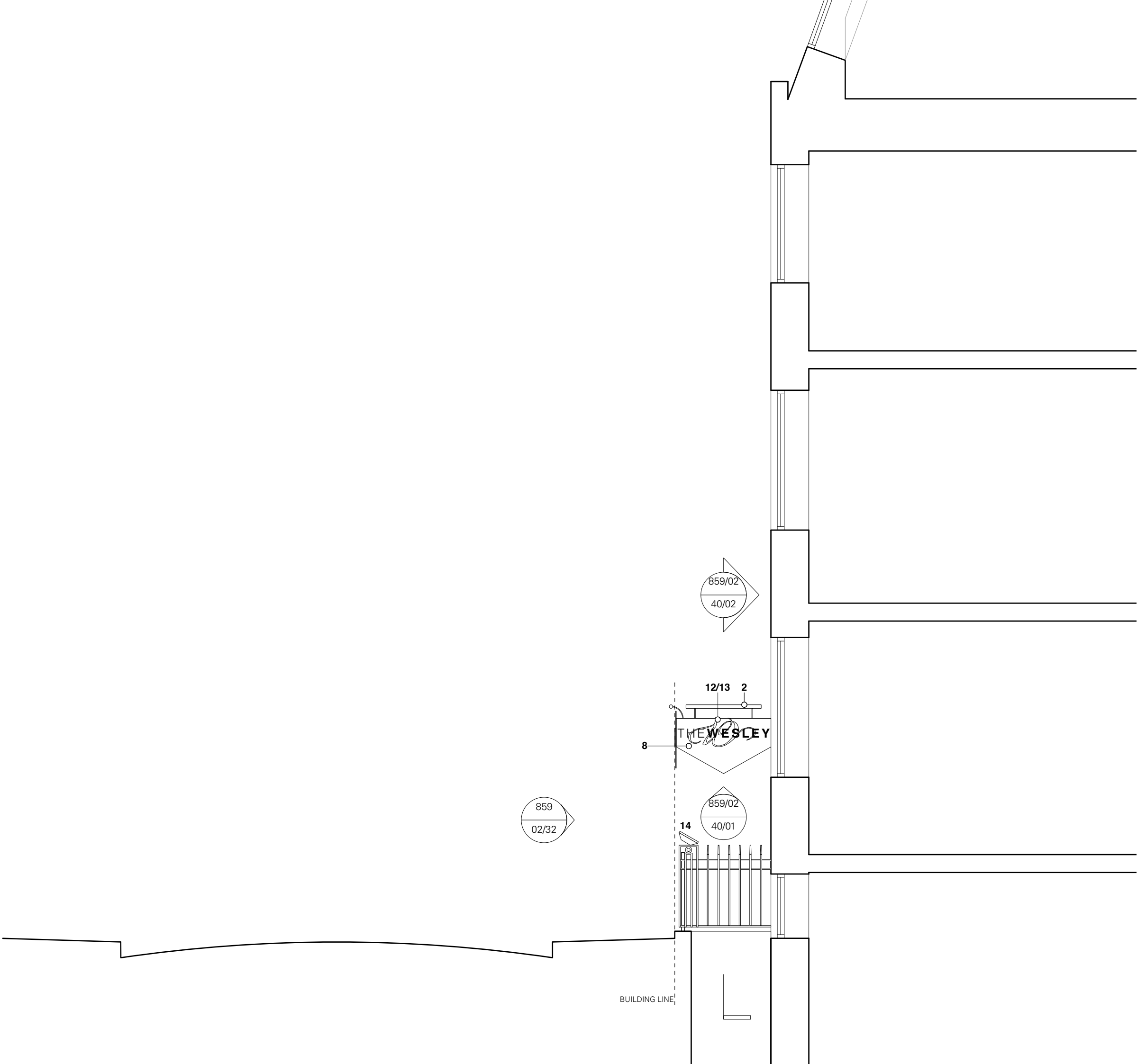
UNIT 301, METROPOLITAN WHARF BUILDING,  
70 WAPPING WALL, LONDON E1W 3SS  
T 02072654945 E mail@manaloandwhite.co.uk

PROJECT  
THE WESLEY EUSTON

DRAWING  
PROP Euston Street Entrance Section

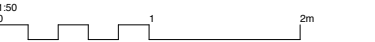
SCALE  
1:50 @ A3

STATUS  
Planning



- 1 Fixed LED wallwash light. White, 3000-4000K
- 2 Fixed linear LED light illuminating signage. White, 3000-4000K
- 3 Traditional non-illuminated projecting sign. Approximately 900 x 600mm
- 4 Menu board. Illuminated with LED strip. Approximately 315 x 400mm
- 5 Daily menu blackboard fixed to railings. Approximately 800 x 1000mm
- 6 Omitted
- 7 Omitted
- 8 Patterned stainless steel fascia
- 9 Existing doors to remain
- 10 Text approximately 2500 x 250mm
- 11 Graphic overall size approximately 1800 x 850mm
- 12 Text approximately 1250 x 125mm
- 13 Graphic overall size approximately 900 x 425mm
- 14 Facade floodlighting
- 15 Fascia signage

B	30.05.17	Planning and Advertisements
A	24.03.17	Planning and Advertisements
REV	DATE	COMMENT



NOTES  
Do not scale from this drawing. All dimensions to be confirmed on site. Architect to be informed of any discrepancies before any action is taken. This drawing is copyright © Manalo & White Ltd.

# MANALO & WHITE

ARCHITECTS

UNIT 301, METROPOLITAN WHARF BUILDING,  
70 WAPPING WALL, LONDON E1W 3SS  
T 02072654945 E mail@manaloandwhite.co.uk

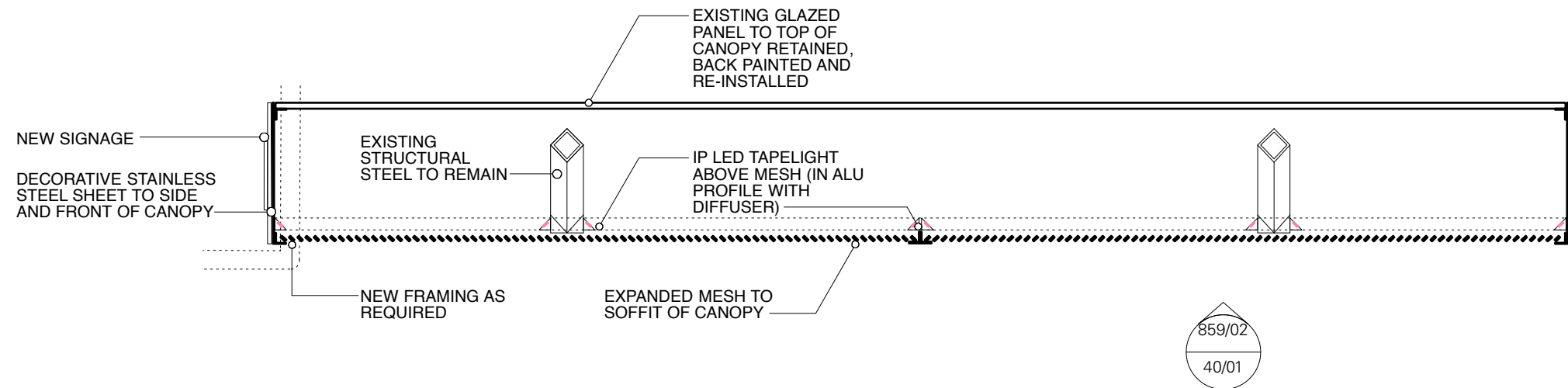
PROJECT  
THE WESLEY EUSTON

DRAWING  
PROP Euston Street Entrance Section

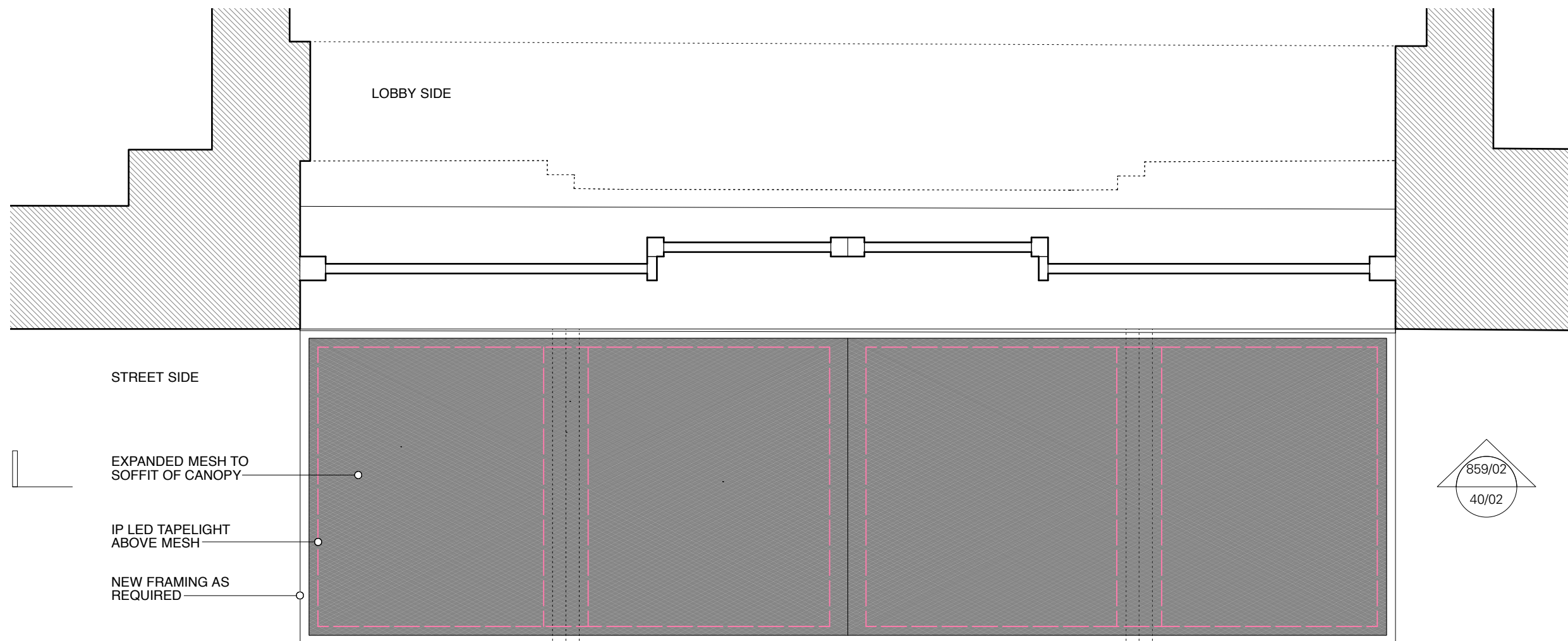
SCALE  
1:50 @ A3

STATUS  
Planning

DRAWING No. 859/02/34 REVISION B

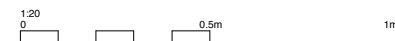


859/02/40/02: ENTRANCE CANOPY TRANSVERSE SECTION



859/02/40/01: ENTRANCE CANOPY REFLECTED UNDERSIDE PLAN

B	30.05.17	Planning and Advertisements
A	24.03.17	Planning and Advertisements
REV	DATE	COMMENT

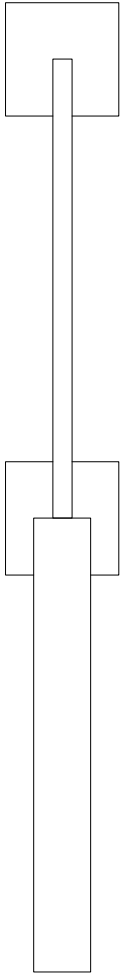


NOTES  
Do not scale from this drawing. All dimensions to be confirmed on site. Architect to be informed of any discrepancies before any action is taken. This drawing is copyright © Manalo & White Ltd.

**MANALO & WHITE**  
ARCHITECTS  
UNIT 301, METROPOLITAN WHARF BUILDING,  
70 WAPPING WALL, LONDON E1W 3SS  
T 02072654945 E mail@manaloandwhite.co.uk

PROJECT  
THE WESLEY EUSTON  
DRAWING  
PROP Euston Street Entrance Canopy  
SCALE  
1:20 @ A3  
STATUS  
Planning

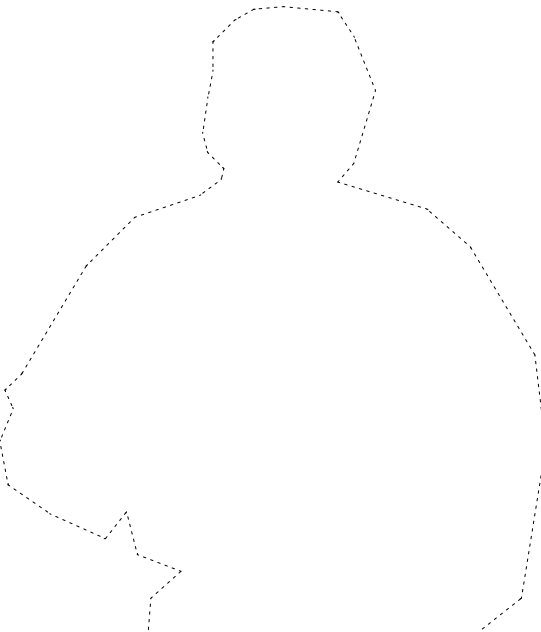
DRAWING No. 859/02/40 REVISION B



859/02/50/0 ELEVATION 1  
Signage 3: Hanging Sign on Regnart Building



859/02/50/02 ELEVATION 2  
Signage 3: Hanging Sign on Regnart Building



B	30.05.17	Planning and Advertisements
REV	DATE	COMMENT



NOTES  
Do not scale from this drawing. All dimensions to be confirmed on site. Architect to be informed of any discrepancies before any action is taken. This drawing is copyright © Manalo & White Ltd.

**MANALO  
&WHITE**  
ARCHITECTS

UNIT 301, METROPOLITAN WHARF BUILDING,  
70 WAPPING WALL, LONDON E1W 3SS  
T 02072654945 E mail@manaloandwhite.co.uk

PROJECT  
THE WESLEY EUSTON

DRAWING  
PROP Signage 3: Hanging Sign on  
Regnart Buildings  
SCALE  
1:10 @ A3

STATUS  
Planning

DRAWING No.	REVISION
859/02/50	B