



5 panel SF55 | RAL 7021 Black grey | 2-left, 3-right | flush track

bifold doors

aluminium

Award-winning, German designed doors



SUNFLEX™

Aluminium folding door systems

Aluminium with its incredible strength and lightweight construction makes it a highly versatile material. Designed and precision engineered for us in Germany, our range of SUNFLEX aluminium systems offer a contemporary and modern look and provide a maintenance free solution. With minimal sightlines, more than 200 different colours, double or triple glazing this range will meet the demands of your project.



For over thirty years SUNFLEX has led the global market for the design, development and manufacture of bifold doors. Today they are widely regarded as the most advanced systems available, with each product handmade to the highest quality and featuring a wide range of unique features and system options.

The SUNFLEX SF55 and SF75 doors utilise the latest in thermal break technology, separating the internal and external faces of aluminium to provide excellent thermal properties, enabling SUNFLEX to manufacture some of the most advanced energy efficient systems available.

Each system is fitted with unique running carriages that mount to the door frame rather than the hinge which provides the smoothest operation, enhanced security and neat visual appearance. Panels can be made up to 1200mm wide and 3500mm high.

For more than seventeen years IDSystems has been the largest installer of SUNFLEX systems in the UK and we now install more SUNFLEX bifold doors each year than anyone else in the world.



6 panel SF75 | RAL 7016 Anthracite grey | 3-left, 3-right with moveable corner post | weathered track



SUNFLEX SF55

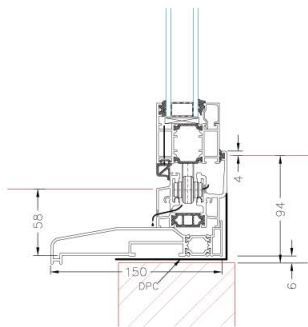
Award-winning, highly efficient thermally broken aluminium bifold door system

Our most popular bifold door system, the SF55 has been designed and developed to shape the future of the folding door market.

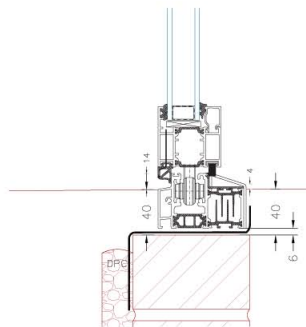
Not only does it provide a compact profile depth of just 55mm, in addition to narrow sightlines; it is packed full of unique features and offers the widest range of size and configuration options available.

Flexibility in design – the system may be folded to the left or the right (or both), open to the inside or outside. It can have panels all folding the same way or split with a number folding to each side. The system can be double or triple glazed, utilised as a single door, French doors and from 2-panel to 22-panel bifold door on three different track options, and include a moveable corner post to create an eye-catching complete opening.

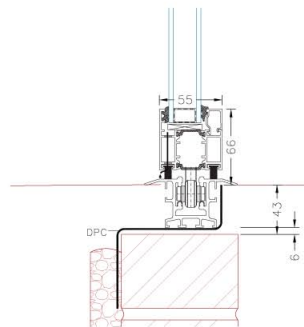
SF55 Track options



Weathered track



Low threshold track



Flush track

SF55 U-Values

U-value of glass (Wm ² /K)	Overall system U-value (Wm ² /K)
1.2 Double glazed	1.7
1.0 Double glazed	1.6
0.7 Triple glazed	1.3



SF55 KEY FEATURES

- **Award-winning**
Named Build It magazine's 'Best Glazed Doors'.
- **Narrow sight lines**
(115mm) maximising light and enhancing your view.
- **Slim front to back profile**
(55mm) minimising stacking area.
- **Continuous interlocking triple gasket, front and back, for finger cushioning and tight compression seals**
The most weather tight bifold doors available.
- **Severe weather rating**
With weathered track and unbeatable reassuring test results (900Pa water tightness and 600Pa air permeability).
- **Extremely versatile**
Up to 1,200mm wide panels, 3,500mm high; open in or out; flush, low or weathered track option.
- **Panel catch**
Unique panel catch holds first door in place during opening.
- **Stacking clip**
Innovative stacking clip secures system when doors are fully opened.
- **Secured by Design**
Designed and installed to police preferred specification.
- **Corner openings**
Can be achieved with integration of moveable corner post.
- **Patented thermal break**
Advanced 24mm shaped polyamide thermal break.
- **Secured part-vent position**
A unique addition that allows room ventilation without having to open the doors.
- **BSI Kitemark**
The only German designed and manufactured bifold doors with the prestigious BSI Kitemark accreditation.
- **PAS 23/24**
The doors meet and exceed the requirements of Part Q of Building Regulations.
- **Mushroom locking**
Into side jamb coupled with top and bottom metal shoot bolt rods, excellent security. WK2 security package available.
- **Integrated tilt and turn window**
With a full height tilt and turn window within the bifold doors.



4 panel SF55 | RAL 7016 Anthracite grey | 4-left | flush track



4 panel SF55 | RAL 6006 Grey olive | 1-left, 3-right | low threshold track



4 panel SF55 | RAL 7016 Anthracite grey | 4-left | weathered track



SF55

System Options

Sunflex SF55v

Thermally insulated versifold doors - available with double or triple glazing

This innovative versifold option to the SF55 has been designed to allow customers to stack all of the panels at the opening end of the door, whilst not compromising on the extreme weather performance and U-value of the system.

- Developed utilising award-winning experience of bifold door
- Truly versatile stacking technology
- Can be stacked to either end, centrally or part opened providing more flexibility - particularly for those with space limitations.

Sunflex SF50

Non-thermally broken aluminium bifold doors - available with single or double glazing

A non-thermally broken aluminium bifold door system, the SF50 is most often utilised as an internal room divider, allowing open plan spaces to be partitioned, reducing sound transmission between rooms or combatting kitchen smells spreading.

- The same unique features, security and advanced engineering as the SF55
- Bespoke panels manufactured up to 1,200mm wide, fitted with a flush track for seamless floor detail
- Available single or double glazed
- Also available with internal timber cladding (SF50c).



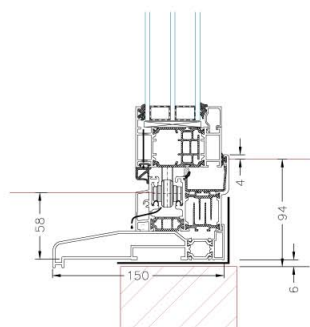
SUNFLEX SF75

The most thermally efficient aluminium bifold door system on the market

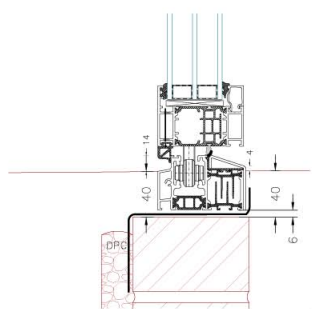
Continuing on from the success of the SF55, the SUNFLEX SF75 bifold doors have been specifically designed to offer the best in thermal efficiency – an extremely low U-Value, eco-friendly folding door system. This market leading system provides the lowest in CO2 emissions associated with reduced energy consumption and considerable savings in heating bills.

Designed for efficiency – a unique bifold door system, specifically designed to accommodate a triple glazed sealed unit. The advanced engineering and clever technology enables the system to perform to highest levels of thermal efficiency as well as maintaining the stunning visual appearance, slim sightlines and configuration options of the award-winning SF55. Unlike competitor's systems who use the same profile to accommodate double glazing and triple glazing, the SF75 has been designed and developed specifically to offer the ultimate levels of performance and the flexibility for everyday use.

SF75 Track options



Weathered track



Low threshold track

SF75 U-Values

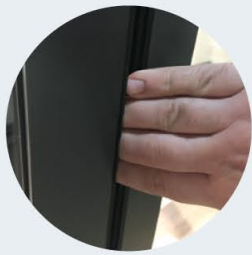
U-value of glass (Wm ² /K)	Overall system U-value (Wm ² /K)
1.2 Double glazed	1.5
1.0 Double glazed	1.4
0.6 Triple glazed	1.0
0.5 Triple glazed	0.9



SF75 KEY FEATURES

- **The most thermally efficient aluminium bifold door system on the market**
With overall U-values down to just 0.9W/m²K.
- **Narrow sight lines**
(115mm) maximising light and enhancing your view.
- **Continuous interlocking triple gasket, front and back, for finger cushioning and tight compression seals**
The most weather tight bifold doors available.
- **Severe weather rating**
With weathered track, providing industry leading protection from wind and rain with test results of 900Pa water tightness and 600Pa air permeability.
- **Extremely versatile**
Up to 1,200mm wide panels, 3,500mm high, open in or out, flush or weathered track option.
- **Panel catch**
Unique panel catch holds first door in place during opening.
- **Stacking clip**
Innovative stacking clip secures system when doors are fully opened.
- **Secured by Design**
Designed and installed to police preferred specification.
- **Corner openings**
Can be achieved with integration of moveable corner post.
- **Patented thermal break**
Advanced 24mm shaped polyamide thermal break.
- **Secured part-vent position**
A unique addition that allows room ventilation without having to open the doors.
- **BSI Kitemark**
The only German designed and manufactured bifold doors with the prestigious BSI Kitemark accreditation.
- **PAS 23/24**
The doors meet and exceed the requirements of Part Q of Building Regulations.
- **Mushroom locking**
Into side jamb coupled with top and bottom metal shoot bolt rods, excellent security. WK2 security package available.





Finger safe
gaskets



Integrated
Venetian blinds



Flush and lever
handles



Panel catch



Unique stacking
clip



Pull handle



Weathered track



Low threshold
track

A unique range of custom made features, options and finishes

There are over 200 RAL colours to choose from or even different colours to the inside and outside (dual colour), also different wood grain effects are available as an additional extra. We have chosen 5 of our most popular finishes as standard stocked colour finishes these are White RAL 9016 semi-gloss, Aluminium RAL 9006 semi-gloss, Grey Aluminium RAL 9007 semi-gloss, Anthracite Grey RAL 7016 semi-gloss and Silver anodised which we can offer to our customers at a competitive price as well as a faster delivery.

There is the option to have different colours on the interior and exterior sides of the doors, perfect if you are trying to match interior décor or exterior hardware, while handles and hinges can also be colour coded to match your choice of door colour as well as the ever popular choice of stainless steel door furniture.





3 panel SF55 | RAL 9011 Graphite black | 3-left | low threshold track

Complete glazing solutions, whatever your project...

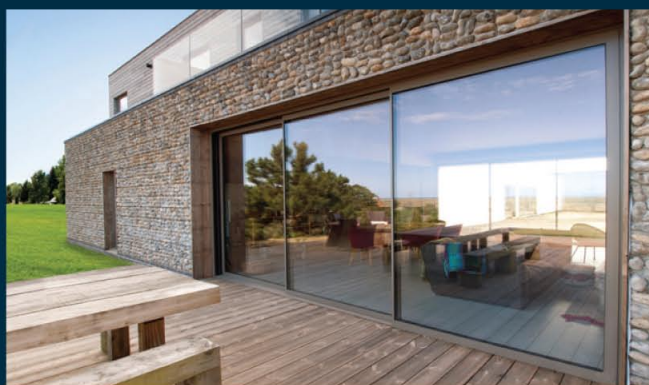
Award winning bi-fold doors, sliding doors and glazing solutions – all made to fit your home perfectly.

Transforming your home needs an experienced and safe pair of hands, so choosing the right company to work with is important. At IDSystems, we're the market leader in providing multi-award winning glazing solutions for all types of projects – extensions, renovations, self-build projects and complete new builds. We guarantee the highest standards of advice, build quality, design and bespoke installation for your complete peace of mind. As a family business founded in 2000, we've built an outstanding reputation for quality, service, expertise and some of the most exciting and innovative designs. From your very first contact with us, you'll know that you're dealing with an industry leader. From our initial designs and technical advice to liaison with architects and builders, creating working CAD drawings and the logistics of final installation, our own staff will be with you every step of the way.





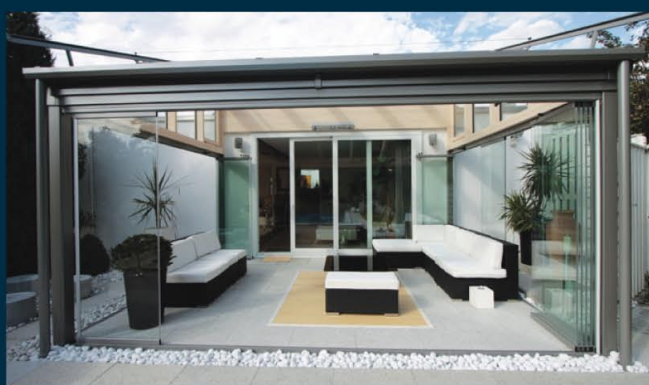
bifold doors



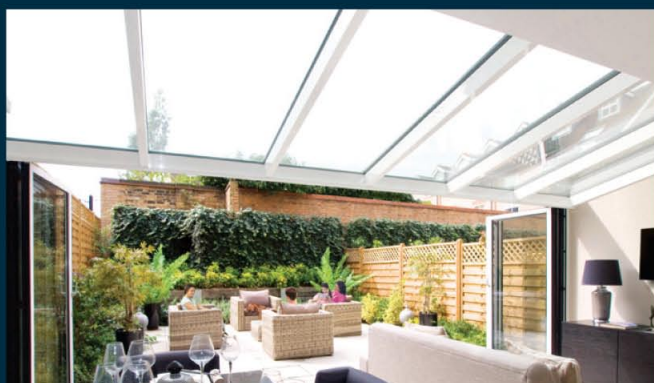
sliding doors



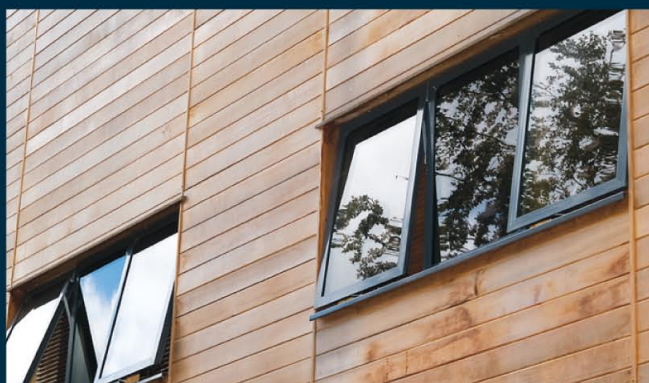
glass balustrades



slide & turn systems



glass roofs



windows & doors

IDSystems
GLASS INNOVATIONS

t 01603 408804 f 01603 258648 e info@idsystems.co.uk

B2 Rhombus Park Diamond Road Norwich NR6 6NN

www.idsystems.co.uk/bifold-doors

