

Do not scale from drawings
 Confirm all dimensions on site prior to manufacture
 Confirm discrepancies with Architect prior to proceeding
 Refer to all Engineers' documentation

notes

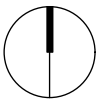
| REVISIONS | | |
|--|------|-------------|
| rev. no. | date | description |
| <p>— secure line of school grounds</p> | | |

A 25-05-17 Roof plan update to show PV's and revised no. of cowl's

job title
 Kingsgate Primary School
 Kingsgate Road
 Camden - NW6 2JG

dwg. title
 Proposed Site Plan

| | | |
|-----------|----------|-------------|
| 1:500@A3 | scale | CH/KT drawn |
| | dwg. no. | rev. no. |
| 596_P-001 | | / |

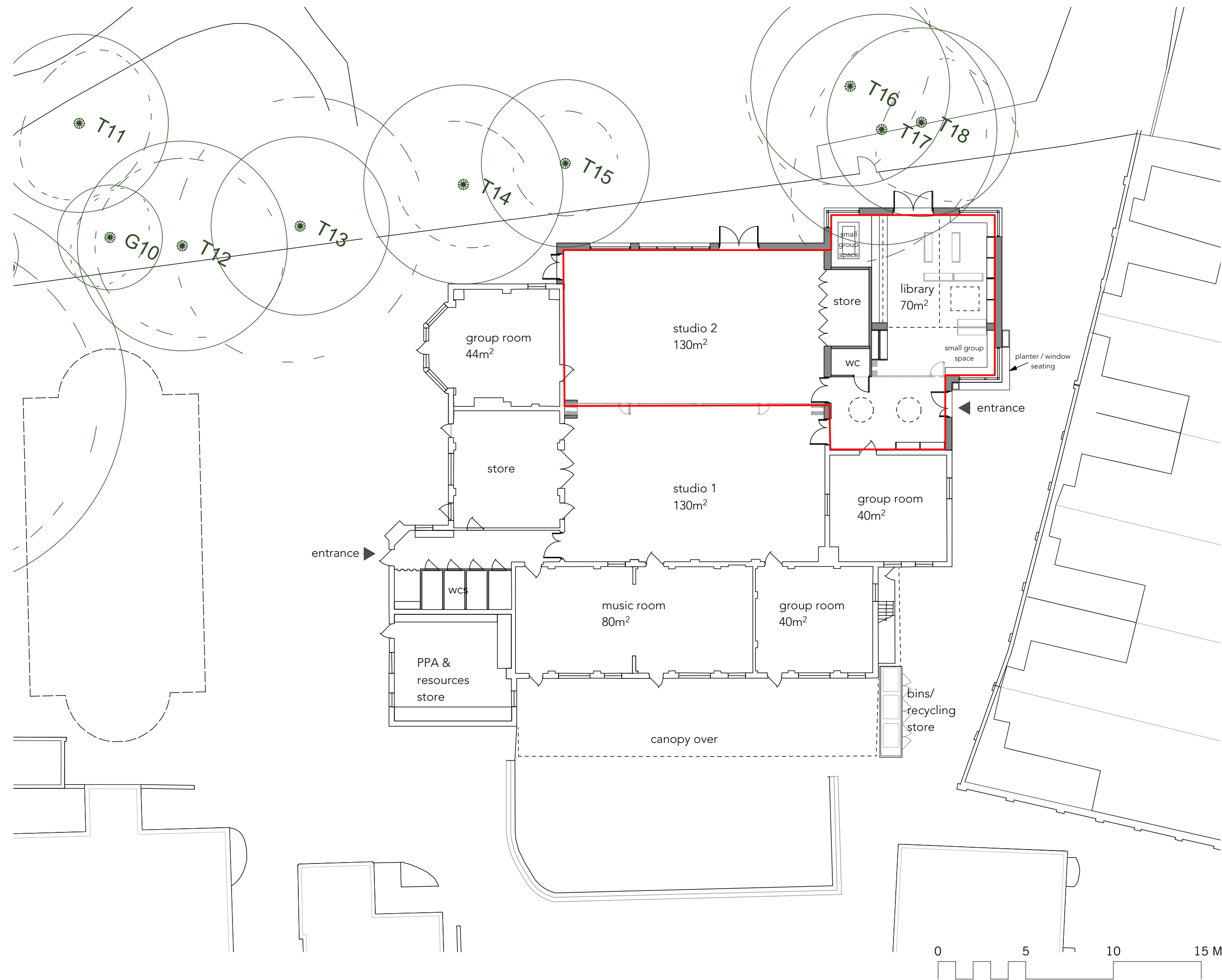
| | | |
|---------|----------|---|
| job no. | date |  |
| 596 | 25-05-17 | |

status
PLANNING

Architects Collaborative
 Sarah Wigglesworth Architects

T +44 (0)20 7607 9200 F +44 (0)20 7607 5800
 E mail@swarch.co.uk W www.swarch.co.uk

Tennis Courts



notes
 Do not scale from drawings
 Confirm all dimensions on site prior to manufacture
 Confirm discrepancies with Architect prior to proceeding
 Refer to all Engineers' documentation

REVISIONS

| rev. no. | date | description |
|----------|------|-------------|
|----------|------|-------------|

- tree canopy
- root protection area
- GIA 250m² new build
- new build
- existing

job title
 Kingsgate Primary School
 Kingsgate Road
 Camden - NW6 2JG

dwg. title
 Proposed Floor Plan

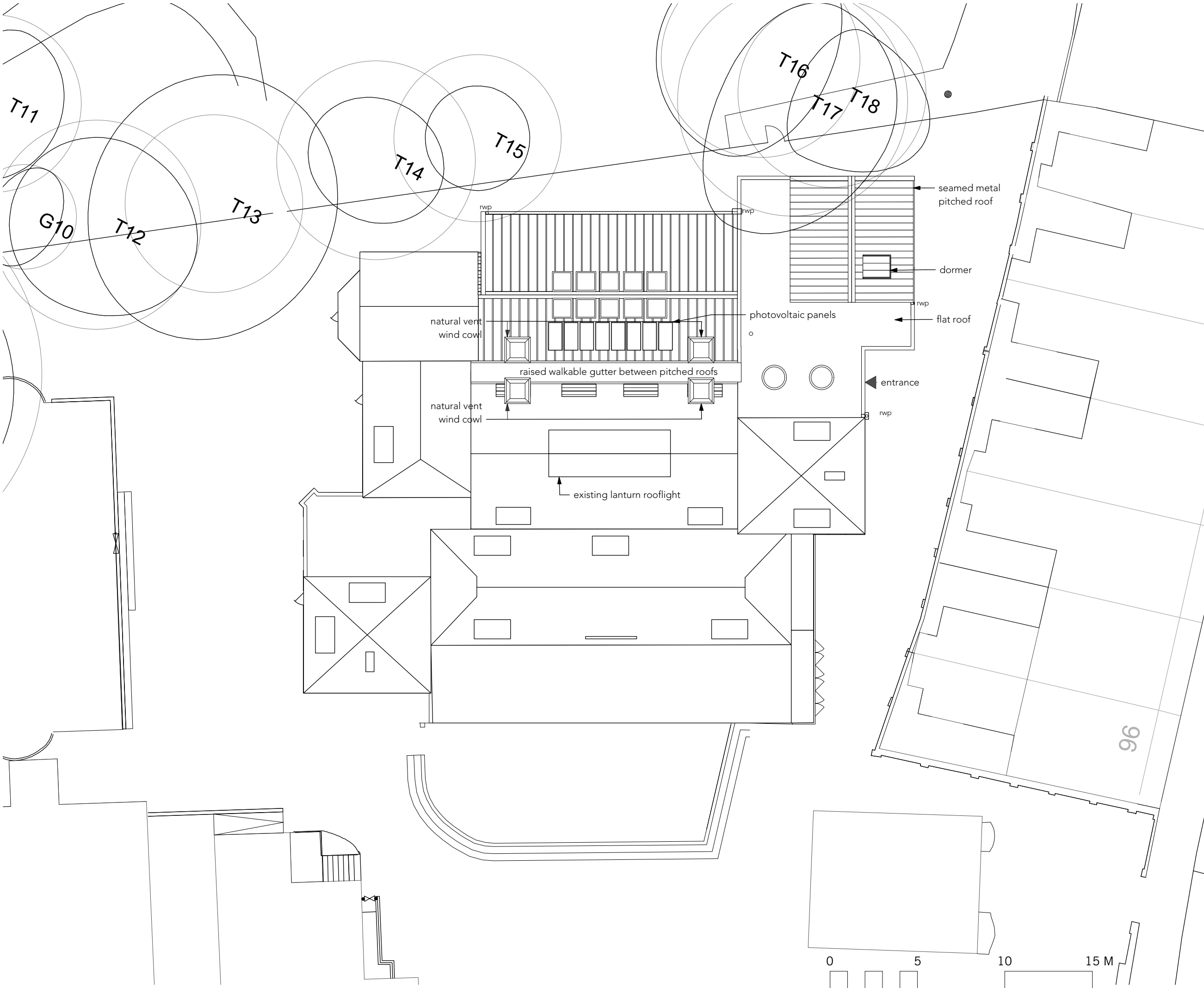
| | | |
|----------|----------|-------------|
| 1:200@A3 | scale | CH/KT drawn |
| | dwg. no. | rev. no. |

| | |
|-----------|--|
| 596_P-002 | |
|-----------|--|

| | | | | |
|-----|---------|----------|------|--|
| 596 | job no. | 23-02-17 | date | |
|-----|---------|----------|------|--|

status
PLANNING

Architects Collaborative
 Sarah Wigglesworth Architects
 T +44 (0)20 7607 9200 F +44 (0)20 7607 5800
 E mail@swarch.co.uk W www.swarch.co.uk



notes
 Do not scale from drawings
 Confirm all dimensions on site prior to manufacture
 Confirm discrepancies with Architect prior to proceeding
 Refer to all Engineers' documentation

REVISIONS
 rev. no. date description

Key:
 ○ tree canopy
 ○ root protection area

A 25-05-17 Photovoltaic panels added to pitched roof of studio 2 & no. of roof cowls revised

job title
 Kingsgate Primary School
 Kingsgate Road
 Camden - NW6 2JG

dwg. title
 Proposed Roof Plan

scale CH drawn
 1:200@A3

dwg. no. rev. no.
 596_P-003 A

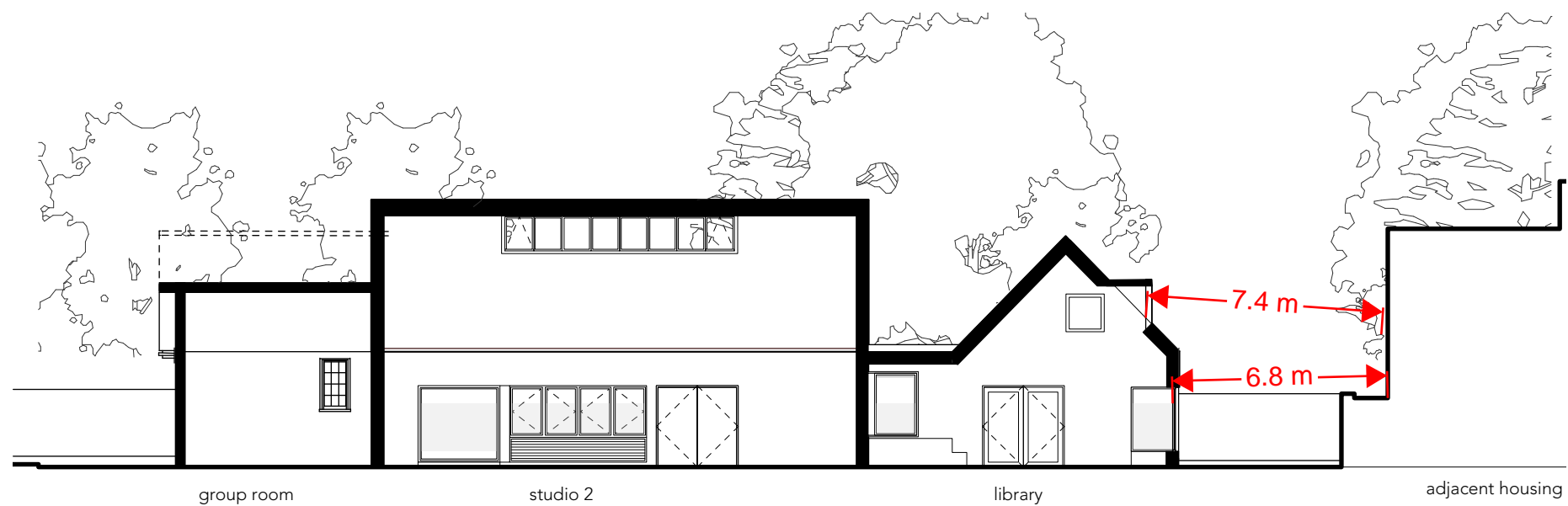
job no. date status
 596 25-05-17

PLANNING

Architects Collaborative
 Sarah Wigglesworth Architects
 T +44 (0)20 7607 9200 F +44 (0)20 7607 5800
 E mail@swarch.co.uk W www.swarch.co.uk



Proposed Section A



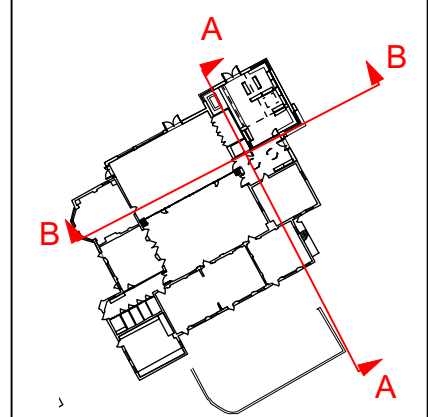
Proposed Section B



notes
 Do not scale from drawings
 Confirm all dimensions on site prior to manufacture
 Confirm discrepancies with Architect prior to proceeding
 Refer to all Engineers' documentation

REVISIONS

rev. no. date description



A 25-05-17 wind cowls added

job title
 Kingsgate Primary School
 Kingsgate Road
 Camden - NW6 2JG

dwg. title
 Proposed Sections

1:200@A3 scale CH drawn

596_P_004 dwg. no. rev. no. A

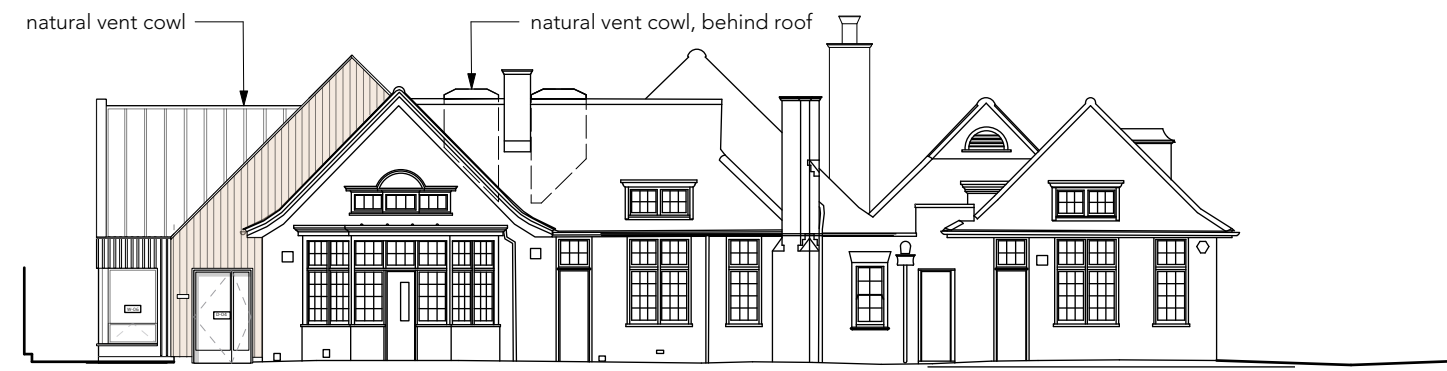
596 job no. 23-02-17 date

PLANNING status

Architects Collaborative
 Sarah Wigglesworth Architects
 T +44 (0)20 7607 9200 F +44 (0)20 7607 5800
 E mail@swarch.co.uk W www.swarch.co.uk



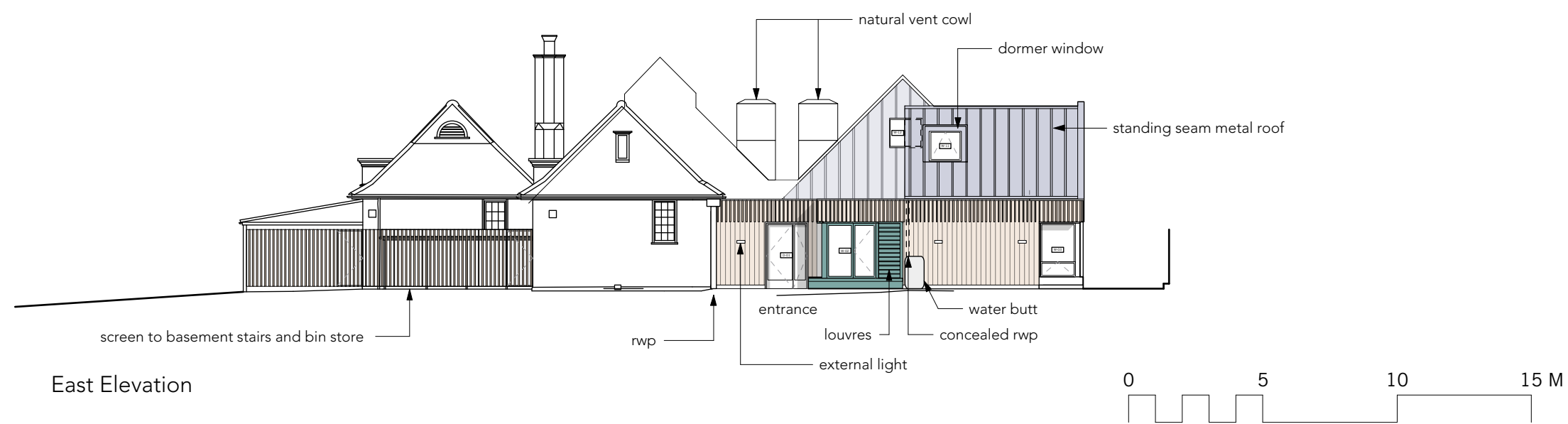
North Elevation



West Elevation



South Elevation



East Elevation



notes
Do not scale from drawings
Confirm all dimensions on site prior to manufacture
Confirm discrepancies with Architect prior to proceeding
Refer to all Engineers' documentation

REVISIONS

| rev. no. | date | description |
|----------|----------|---|
| A | 25-05-17 | Vent cowls removed from north elevation |

job title
Kingsgate Primary School
Kingsgate Road
Camden - NW6 2JG

dwg. title
Proposed Elevations

1:200@A3 scale
CH drawn

596_P-005
596 job no.
25-05-17 date
A rev. no.

status
PLANNING

Architects Collaborative
Sarah Wigglesworth Architects
T +44 (0)20 7607 9200 F +44 (0)20 7607 5800
E mail@swarch.co.uk W www.swarch.co.uk