

**DRAWING TO BE READ IN CONJUNCTION WITH THE SPECIFICATION AND ALL RELEVANT DRAWINGS. DO NOT SCALE FROM THIS DRAWING.**

**MATERIAL SPECIFICATION:**

**CERAMIC CLADDING:**  
 1. Glazed terracotta glazed ceramic cladding, 200mm x 200mm and 300mm x 300mm, varied tones of white and cream hung on aluminum sections. Vertical joints lapped, horizontal joints open maximum 3mm. To coordinate undercroft, roof terraces and garden wall to rear of residential and commercial units as per drawings. Manufacturer NBI ceramics.

**METAL CLADDING:**  
 25. Copper-ally cladding comprising 1.0mm thick TECU® Brass Profiled Elements  
 Support structure: Euroclad or similar secondary metal support grid  
 Cladding system: Wetset® Profiled TECU® Brass Cladding System  
 Cladding panel: Pre-fabricated, finished brass, manufacturer NBI  
 Mineral TECU® Brass, Cu59 to R-250 Thickness: 1.0mm Finish: Marubi pre-burnished finish on outer surfaces to architect's approved sample  
 Contractor design to include adequate measures to prevent bimetallic or chemical corrosion of adjacent materials to the brass.  
 26. Copper-ally profiled cladding, TECU® Brass or similar approved  
 27. Copper-ally cladding, TECU® Brass or similar approved

**GLAZING:**  
 3. Ground - lower ground floor facade, glazing to incorporate sliders and opening, aluminum frame, polyester powder coated to match metal cladding. Manufacturer Centric or similar  
 4. Upper ground floor louvre position to be mechanically adjustable for improved privacy  
 5. Fix hardwood timber sliding windows behind metal fins. Fixed fins 200mm x 200mm set flush with facade at regular spacings, sliding fins 40mm x 200mm set back from facade internal glazing substrate  
 6. Inward opening aluminum windows, 60mm x 200mm (2) x 200mm x 200mm, recessed in profiled metal to mitigate overlooking, recess finish around window to maximize resistance  
 7. Glazed roof supported on 75mm x 60mm concrete finish against structure  
 8. Rooflights, frames: steel, flush with standing seam roof, manufacturer The Rooflight Company range Neo for similar

Note: All louvers and window frames to match TECU profiled metal cladding of 26L, 5000 Back Coat  
 Note: All glazing, windows to comply with consultants report

**ROOF FINISHES:**  
 9. Standing seam copper-ally to match profiled metal cladding, TECU or similar  
 10. All gutters and downpipes to be concealed  
 11. Raincap capping to match profiled metal cladding, TECU or similar  
 12. Brown roof over Unit 1 to increase biodiversity

**BRICK CLADDING:**  
 13. Peabody's bricks (225mm x 102mm x 57mm), warm red. Render bond with alternate bricks omitted in sections, with exposed level finish  
 14. Windows to sit behind fixed brick facade. Stagger bond setting out to have missing bricks as shown on elevation

**EXTERNAL FLOOR FINISHES:**  
 15. Forecourt - hardened limestone external paving, flamed finish  
 Manufacturer Hardscape  
 16. Basement courtyards - limestone external paving, flamed finish  
 Manufacturer Hardscape  
 17. Unit 1 Terrace - Roof Terraces - Cedar decking with rough planed finish

**OTHER:**  
 18. Bespoke Glazed roof access hatch to private terraces. Note: Roof terraces to be fixed with beacon alarm system for fire safety purposes. Final solution to be approved by building control officer  
 19. Forecourt balustrade - to match profiled metal cladding, TECU or similar  
 20. Roof Terrace planter - to match profiled metal cladding, TECU or similar  
 21. Glazed Terrace balustrade

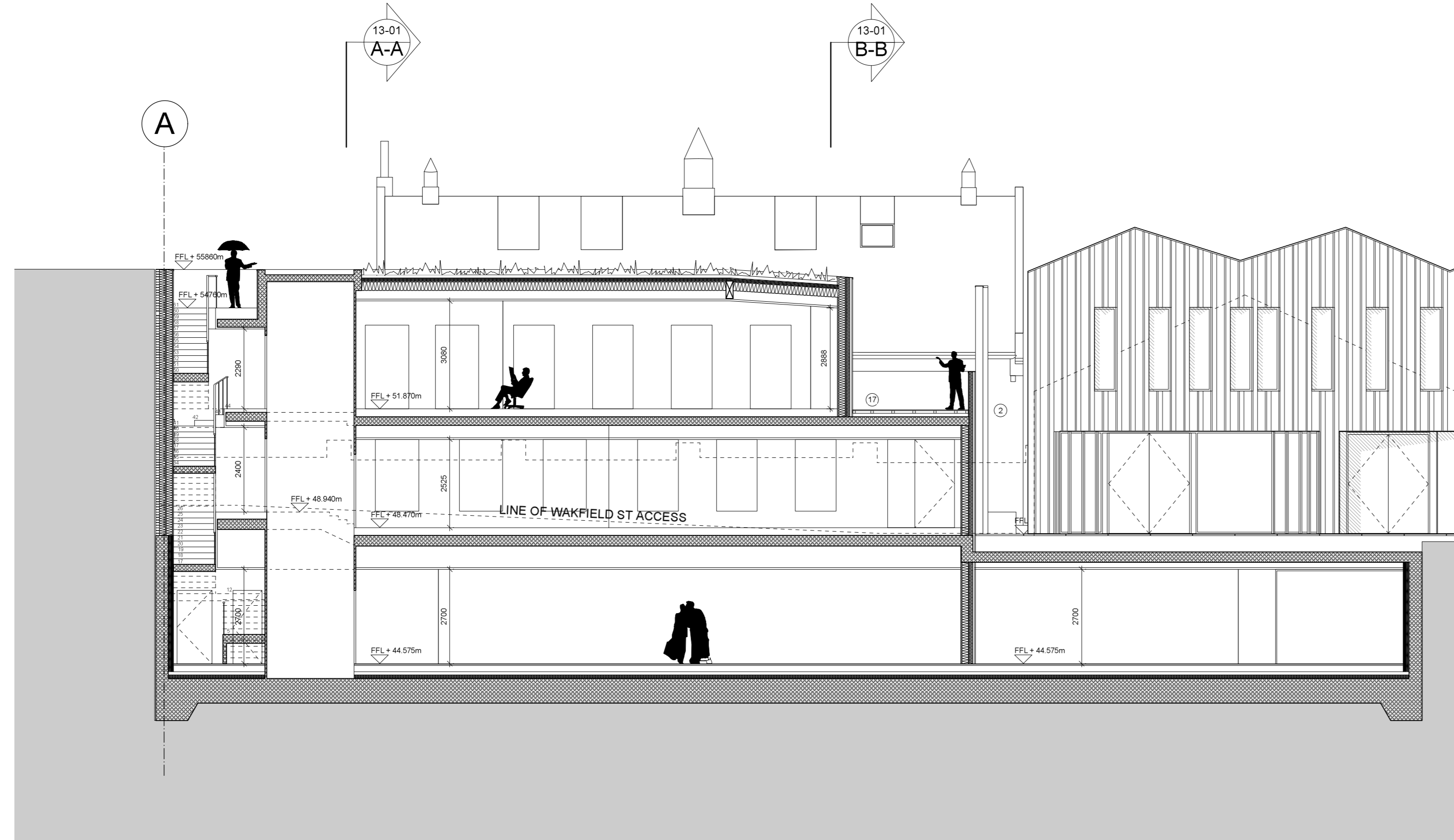
**LANDSCAPE SPECIFICATION:**  
**FLOOR FINISHES (outside Unit 02)**  
 Recycled and reuse existing granite sets, flat topped and smooth top  
 Paving: width 150mm precast concrete panels with circular glass pavement lights, Manufacturer: Luxcrete or similar  
**SHARED SURFACE (outside Unit 02, 03 + 04)**  
 Robust large format limestone paving suitable for heavy duty access by emergency and servicing vehicles  
 Manufacturer: Hardscape

**FOOTPATH, FORECOURT + COURTYARDS:**  
 Limestone paving, varied smooth and rough split texture, 200mm x 200mm  
 Tree pits with limestone edging and tree grilles  
 Manufacturer: Hardscape

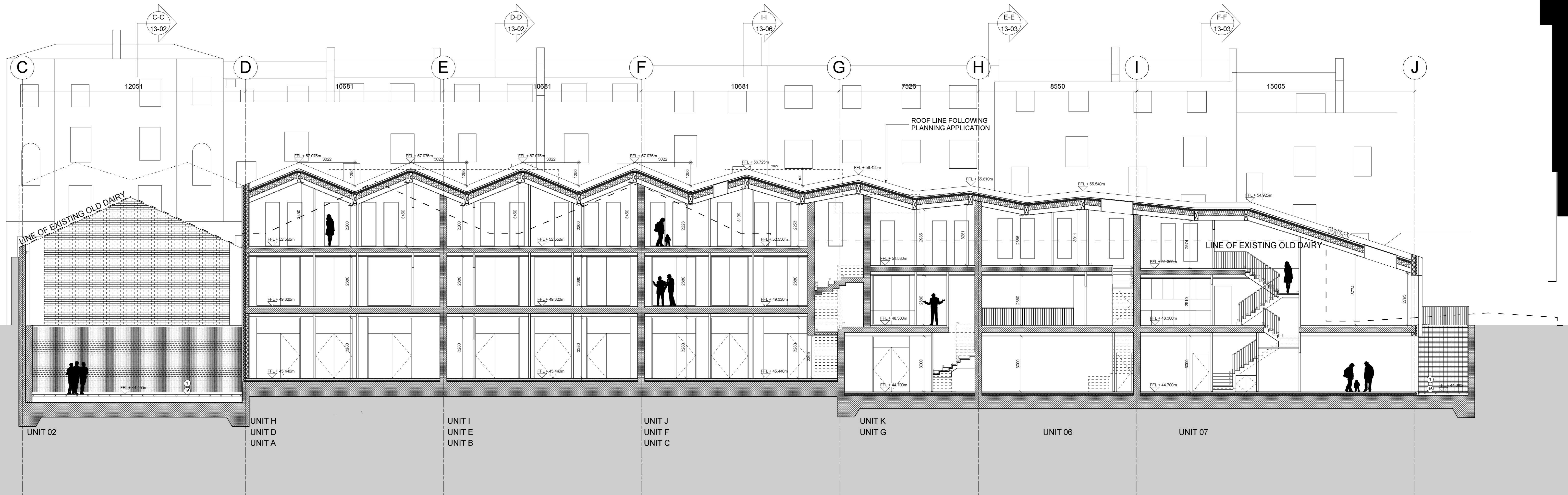
**LIGHTING:**  
 Recessed flush into soffits of building overhangs  
 Manufacturer: Louis Poulsen

**PLANTING:**  
 Native species planted in zone along listed wall

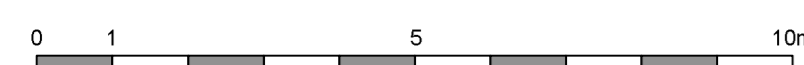
**PLANNING ISSUE**



SECTION GG



SECTION HH



REV	DATE	DESCRIPTION
PA02	15/05/17	Change in unit mix

**THE OLD DAIRY**  
 WAKEFIELD STREET  
 LONDON

Sections G + H

DRNG No	SCALE	DATE
1250-13-004-PA02	1:100@A0	May 2017



105 JERMYN STREET  
 LONDON SW1Y 6EE  
 T 020 7451 0955  
 mail@stanhopegate.com  
 www.stanhopegatearchitecture.com

LINE OF EXISTING OLD DAIRY