

**DRAWING TO BE READ IN CONJUNCTION WITH THE SPECIFICATION AND ALL RELEVANT DRAWINGS. DO NOT SCALE FROM THIS DRAWING.**

**MATERIAL SPECIFICATION:**

**CERAMIC CLADDING:**  
 1. Glazed bespoke fluted ceramic cladding, 300mm x 200mm and 300mm x 200mm, varied tones of white and cream hung on aluminum sections. Vertical joints lapped. Horizontal joints open maximum 1mm. To coordinate undercroft, roof terraces and garden wall to rear of residential and commercial units as per drawings. Manufacturer NBE ceramics

**METAL CLADDING:**  
 24. Copper-ally cladding comprising 1.0mm thick TECU® Brass Profiled Elements. Support structure: Bundles of similar secondary metal supporting. Cladding system: Webtech® Profiled TECU® Brass Cladding System. Cladding panel: Pre-fabricated brushed brass. Manufacturer HVE. Minimum TECU® Brass Cu56 30 R-250 Thickness 1.0mm. Finish: Manual pre-burnished finish on outer surfaces to architect approved sample. Contractor design to include adequate measures to prevent bimetallic or chemical corrosion of adjacent materials to the brass.  
 25. Copper-ally profiled cladding, TECU® Brass or similar approved.  
 26. Copper-ally cladding, TECU® Brass or similar approved.

**GLAZING:**  
 3. Ground - lower ground floor facade, glazing to incorporate sliders and opening, aluminum frame, polycarbonate powder coated to match metal cladding. Manufacturer Corinfa or similar.  
 4. Upper Ground floor (lower position to be mechanically adjustable for increased privacy).  
 5. Fix hardwood timber sliding windows behind metal fins. Fixed fins 200mm x 200mm set flush with facade at regular spacings, sliding fins 20mm x 200mm set back from facade internal glazing/balustrade.  
 6. Inward opening aluminum windows, 500mm x 2000mm x 200mm x 200mm, recessed in profiled metal to mitigate overlooking, recess finish around window to maximize resistance.  
 7. Glazed roof supported on 75mm x 600mm concrete fins at approx 3m centres.  
 8. Rooflights, frameless, steel, flush with standing seam roof, manufacturer The Hoodlight Company range Neo for similar.

Note: All louvers and window frames to match TECU profiled metal cladding of Unit 02, Unit 03 and Unit 04.  
 Note: All office ventilation to comply with consultants report.

**ROOF FINISHES:**  
 9. Standing seam copper-ally to match profiled metal cladding, TECU or similar.  
 10. All gutters and downpipes to be concealed.  
 11. Parapet capping to match profiled metal cladding, TECU or similar.  
 12. Brown roof over Unit 3 to increase biodiversity.

**BRICK CLADDING:**  
 13. Perimeter bricks, 228mm x 108mm x 58mm, warm red header bond with alternate bricks omitted in sections, with recessed chisel finish.  
 14. Windows to sit behind fixed brick facade. Stagger bond setting out to have missing bricks as shown on elevation.

**EXTERNAL FLOOR FINISHES:**  
 15. Forecourt - reinforced limestone external paving, finished finish. Manufacturer Hardscape.  
 16. Basement courtyards - limestone external paving, finished finish.  
 17. Unit 1 Terrace - Roof Terraces - Cedar decking with rough planed finish.

**OTHER:**  
 18. Bespoke Glazed roof access hatch to private terraces. Note: Roof terraces to be fixed with beacon alarm system for fire safety purposes. Final solution to be approved by building control officer.  
 19. Forecourt balustrade - to match profiled metal cladding, TECU or similar.  
 20. Roof Terrace planter - to match profiled metal cladding, TECU or similar.  
 21. Glazed Terrace balustrade.

**LANDSCAPE SPECIFICATION:**  
**FLOOR FINISHES (outside Unit 02)**  
 Recycled and reuse existing granite sets, flat topped and smooth laid.  
 Pavement width 1.8m, precast concrete panels with circular glass pavement lights. Manufacturer Luxcrete or similar.  
**SHARED SURFACE (outside Unit 02, 03 + 04)**  
 Robust large format limestone paving suitable for heavy duty access by emergency and servicing vehicles. Manufacturer Hardscape.  
**FOOTPATH FORECOURT + COURTYARDS**  
 Limestone paving, varied smooth and rough split texture, 200mm x 200mm.  
 Tree pits with limestone edging and tree grates. Manufacturer Hardscape.

**LIGHTING:**  
 Recessed flush into soffits of building overhangs. Manufacturer Louis Prouzet.

**PLANTING:**  
 Native species planted in zone along listed wall.

**PLANNING ISSUE**

PA02 15/05/17 Change in Unit mix.

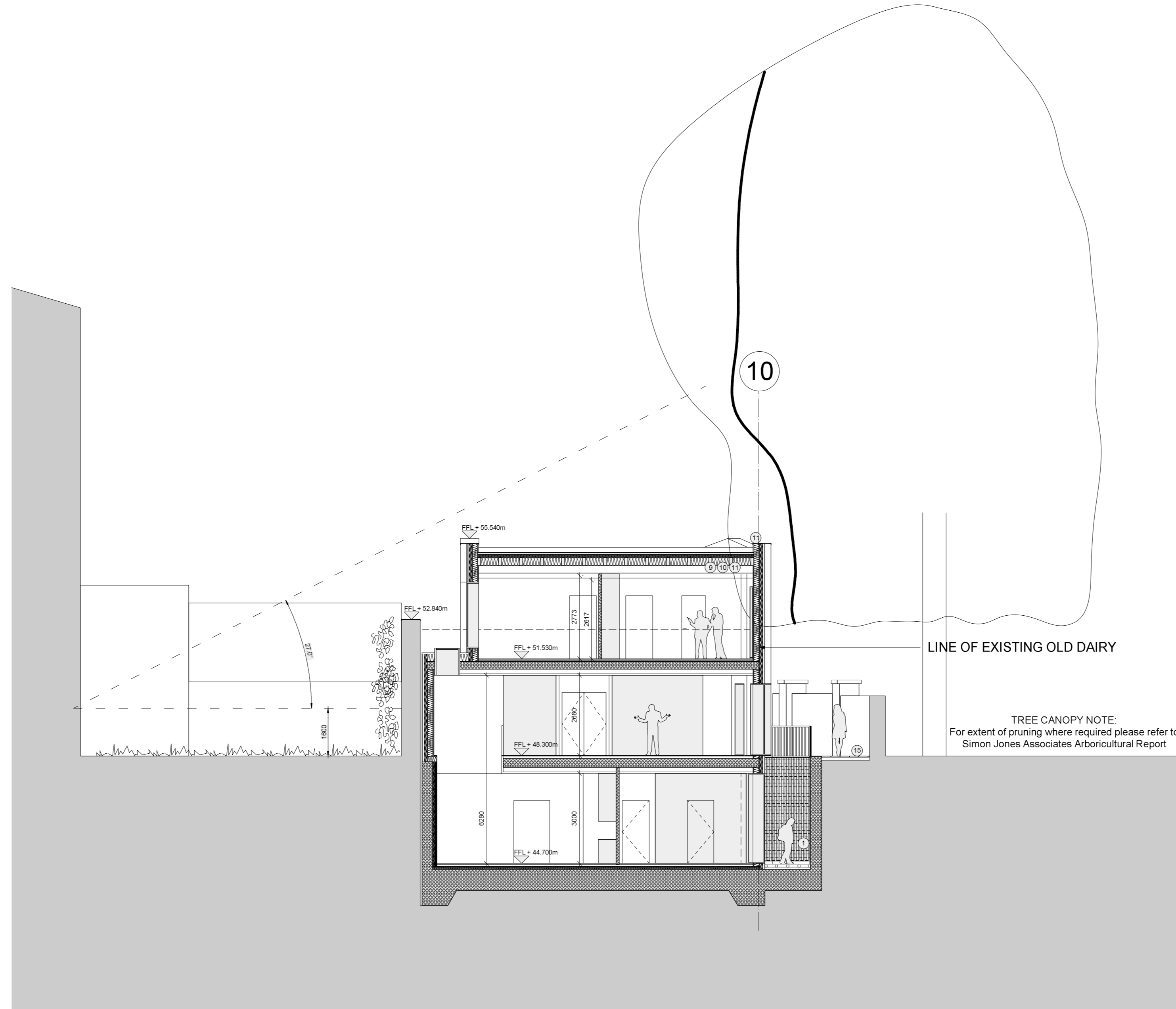
REV	DATE	DESCRIPTION
-----	------	-------------

**THE OLD DAIRY**  
 WAKEFIELD STREET  
 LONDON  
 Sections E + F

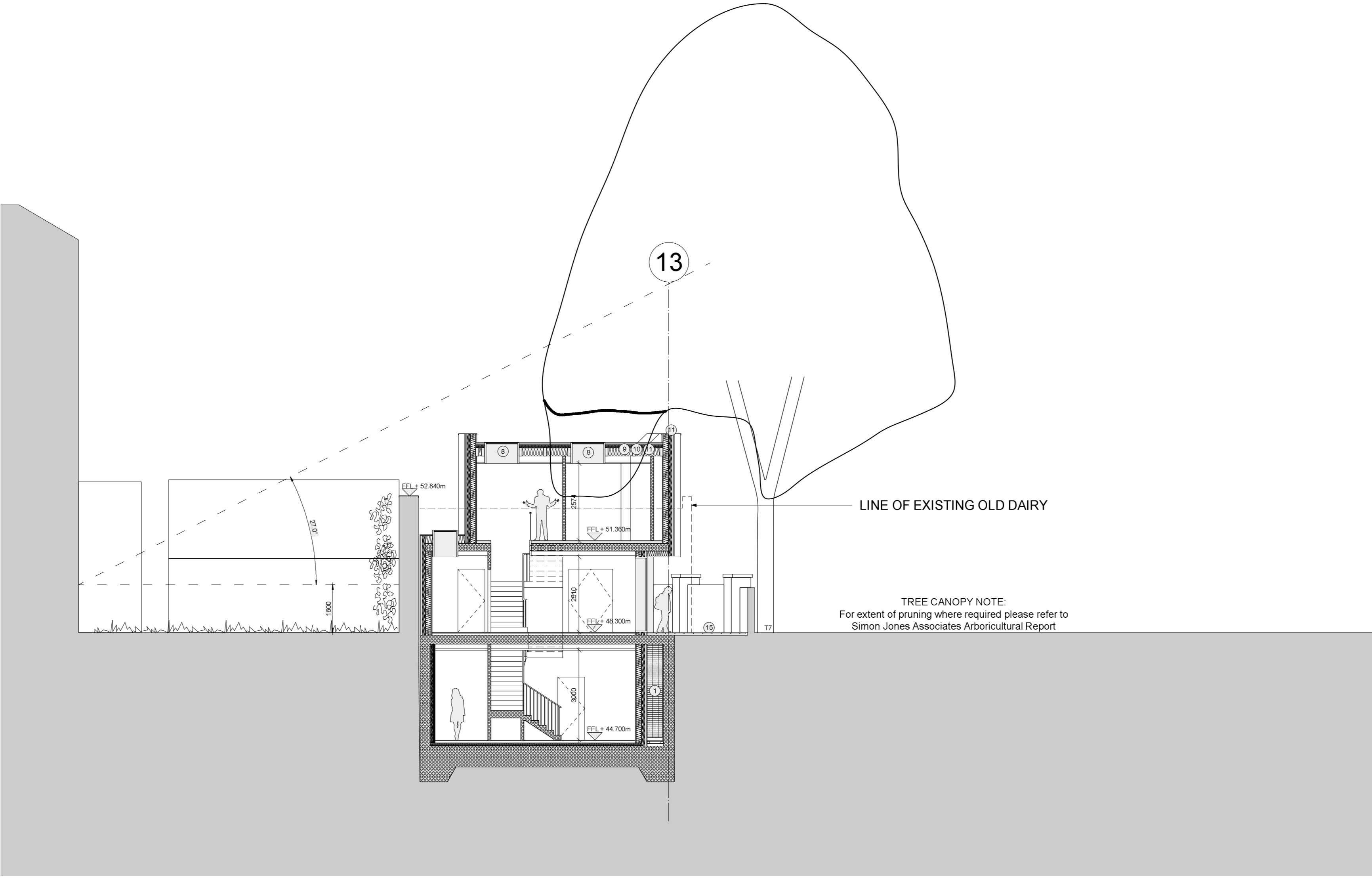
DRNG No	SCALE	DATE
2250-13-003-PA02	1:100@A0	May 2017



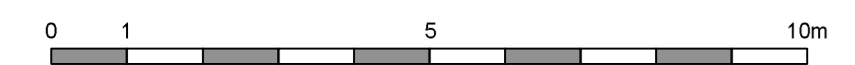
105 JERMYN STREET  
 LONDON SW1Y 6EE  
 T 020 7451 0955  
 mail@stanhopegate.co.uk  
 www.stanhopegatearchitecture.com



**SECTION EE**



**SECTION FF**



-----LINE OF EXISTING OLD DAIRY