

**DRAWING TO BE READ IN CONJUNCTION WITH THE SPECIFICATION AND ALL RELEVANT DRAWINGS. DO NOT SCALE FROM THIS DRAWING.**

**MATERIAL SPECIFICATION:**  
**CERAMIC CLADDING:**  
 1. Glazed beige/pebble fluted ceramic cladding, 200mm x 200mm and 300mm, varied tones of white and cream hung on aluminum sections. Vertical joints lapped, horizontal joints open maximum 5mm. To coordinate underside, roof terraces and garden wall to rear of residential and commercial units as per drawings. Manufacturer NBE ceramics.  
**METAL CLADDING:**  
 25. Copper-ally cladding comprising 1.0mm thick TECU9 Brass Profilled Elements support structure: Euroflex or similar secondary metal regular grid.  
 Cladding system: Wetflex Profilled TECU9 Brass Cladding System.  
 Cladding panel: Pre-fabricated, finished brass, manufacturer RME.  
 Material: TECU9 Brass, Cu59 to R.250 Thickness: 1.0mm Finish: Marubi pre-burnished finish on outer surfaces to architect's approved sample.  
 Contractor design to include adequate measures to prevent bimetallic or chemical corrosion of adjacent materials to the brass.  
 26. Copper-ally profilled cladding, TECU9 Brass or similar approved.  
 27. Copper-ally cladding, TECU9 Brass or similar approved.

**GLAZING:**  
 3. Ground - lower ground floor facade, glazing to incorporate sliders and openings, aluminum frame, polyester powder coated to match metal cladding. Manufacturer: Cortina or similar.  
 4. Upper ground floor louvre position to be mechanically adjustable for improved privacy.  
 5. Fix hardwood timber sliding windows behind metal fins. Fixed fins 200mm x 230mm set flush with facade at regular spacings, sliding fins 40mm x 230mm set back from facade internal glazing substrate.  
 6. Inward opening aluminum windows, 600mm x 2400mm or 2400mm x 2400mm, recessed in profiled metal to mitigate overlooking, recess finish around window to maintain substance.  
 7. Glazed roof supported on 75mm x 600mm concrete finial supports in centres.  
 8. Rooflights, framesless, steel, flush with standing seam roof, manufacturer The Rooflight Company range Neo for similar.  
**Note:** All louvres and window frames to match TECU9 profilled metal cladding or RAL 9002 Black Oxide.  
**Note:** All office ventilation to comply with consultants report.

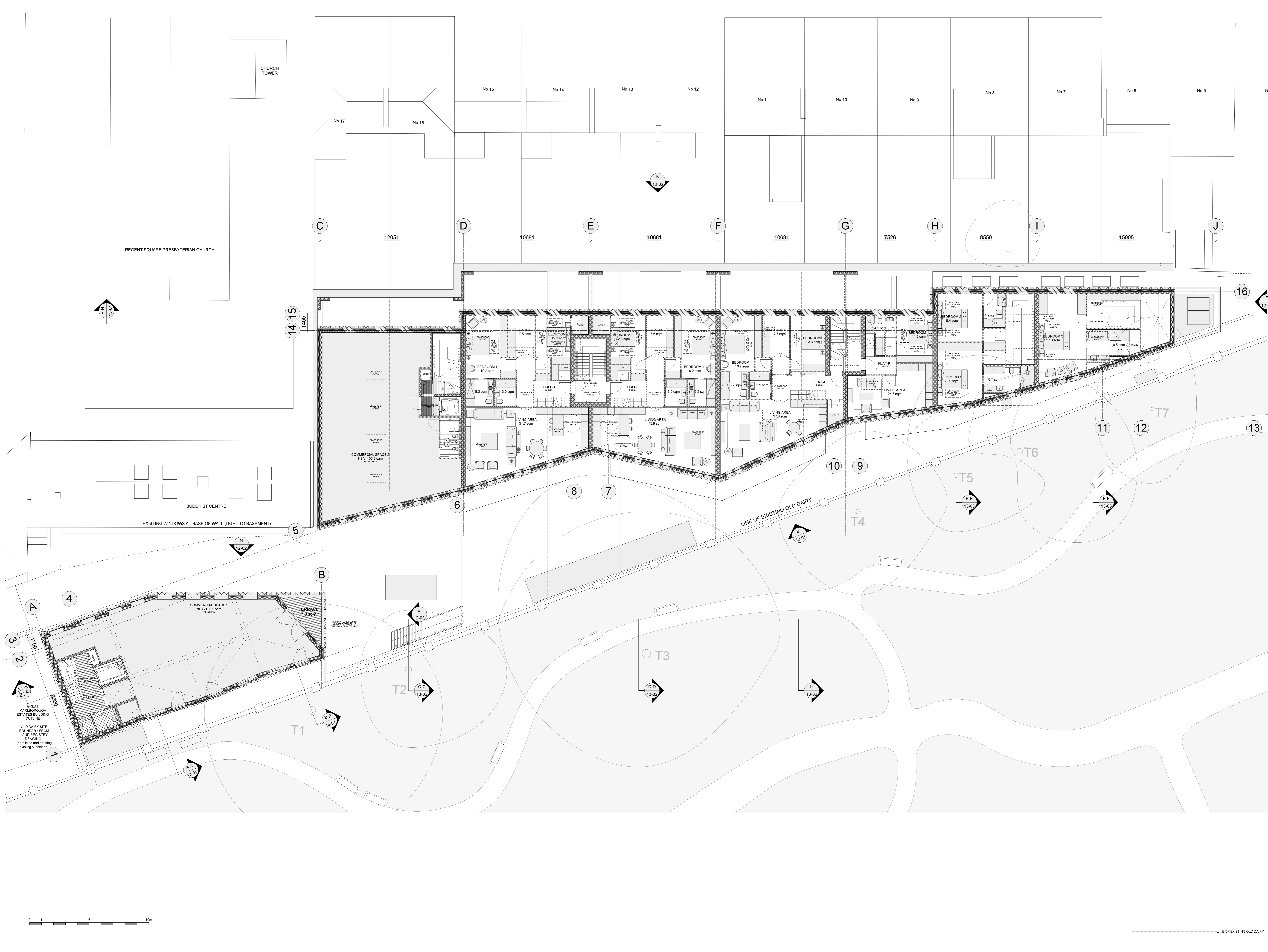
**ROOF FINISHES:**  
 9. Standing seam copper-ally to match profilled metal cladding, TECU9 or similar.  
 10. All gutters and downpipes to be concealed.  
 11. Rampart capping to match profilled metal cladding, TECU9 or similar.  
 12. Brown roof over Unit 1 to increase biodiversity.

**BRICK CLADDING:**  
 13. Porcelain bricks, 120mm x 108mm x 54mm, warm red. Powder bond with alternate bricks omitted in sections, with recessed base line.  
 14. Windows to sit behind fixed brick facade. Stagger bond setting out to have missing bricks as shown on elevation.

**EXTERNAL FLOOR FINISHES:**  
 15. Forecourt - hardened limestone external paving, flamed finish.  
 16. Basement courtyards - limestone external paving, flamed finish.  
 17. Terrace - roof terraces - Cedar decking with rough planed finish.  
**OTHER:**  
 18. Bespoke glazed roof access hatch to private terraces.  
**Note:** Roof terraces to be fixed with beacon alarm system for fire safety purposes. Fire solution to be approved by building control officer.  
 19. Forecourt balustrade - to match profilled metal cladding, TECU9 or similar.  
 20. Roof Terrace planter - to match profilled metal cladding, TECU9 or similar.  
 21. Glazed Terrace balustrade.

**LANDSCAPE SPECIFICATION:**  
**FLOOR FINISHES (outside Unit 01)**  
 Recycled and reuse existing granite sets, flat topped and smooth top.  
 Pavement width 1.8m, precast concrete panels with circular glass pavement lights. Manufacturer: Luxcrete or similar.  
**SHARED SURFACE (outside Unit 01, 02, 03 + 04)**  
 Robust large format limestone paving suitable for heavy duty access by emergency and servicing vehicles. Manufacturer: Hardscape.  
**FOOTPATH, FORECOURT + COURTYARDS:**  
 Limestone paving, varied smooth and rough split texture, 200mm x 600mm.  
 Tree pits with limestone edging and tree grilles. Manufacturer: Hardscape.  
**LIGHTING:**  
 Recessed flush into soffits of building overhangs. Manufacturer: Louis Poulsen.  
**PLANTING:**  
 Native species planted in zone along listed wall.

**PLANNING ISSUE**



REV	DATE	DESCRIPTION

**THE OLD DAIRY**  
 WAKEFIELD STREET  
 LONDON  
 First Floor

DRNG No	SCALE	DATE
1250-11-004-PA02	1:100@A0	May 2017



105 JERMYN STREET  
 LONDON SW1Y 6EE  
 T 020 7451 0955  
 mail@stanhopegate.com  
 www.stanhopegatearchitecture.com