

**DRAWING TO BE READ IN CONJUNCTION WITH THE SPECIFICATION AND ALL RELEVANT DRAWINGS. DO NOT SCALE FROM THIS DRAWING.**

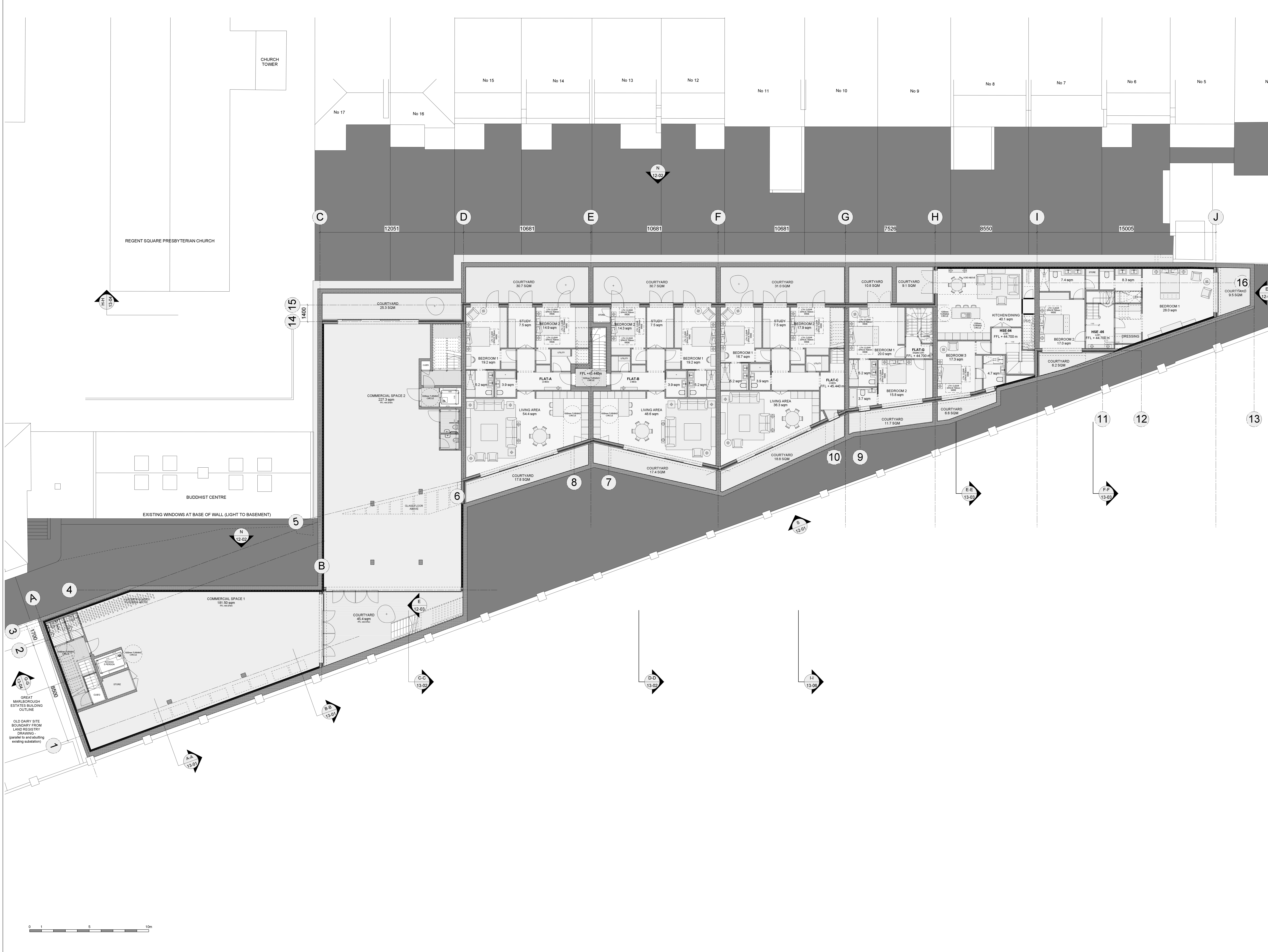
**MATERIAL SPECIFICATION:**  
**CERAMIC CLADDING:**  
 1. Glazed Bespoke fluted ceramic cladding, 200mm x 200mm and 200mm, varied tones of white and cream hung on aluminum sections. Vertical joints lapped, horizontal joints open maximum 3mm. To courtyard, undercroft, roof terraces and garden wall to rear of residential and commercial units as per drawings. Manufacturer NBEI ceramics.  
**METAL CLADDING:**  
 26. Copper-alloy cladding comprising 1.0mm thick TECU® Brass Profilled Elements support structure. Elements on similar secondary metal support grid.  
 Cladding system: Weibech® Profilled TECU® Brass Cladding System  
 Cladding panel: Pre-fabricated, finished brass, manufacturer HME  
 Material: TECU® Brass, Cu59, R 0.10 Thickness: 1.0mm  
 Finish: Marubi pre-burnished finish on outer surfaces to architect approved sample.  
 Contractor design to include adequate measures to prevent bimetallic or chemical corrosion of adjacent materials to the brass.  
 27. Copper-alloy profilled cladding, TECU® Brass or similar approved.  
 28. Copper-alloy cladding, TECU® Brass or similar approved.

**GLAZING:**  
 3. Ground - lower ground floor facade, glazing to incorporate sliders and openings, aluminum frame, polycarbonate powder coated to match metal cladding. Manufacturer Camlin or similar.  
 4. Upper ground floor (lower position to be mechanically adjustable for improved privacy).  
 5. Fix hardwood timber sliding windows behind metal.  
 6. Fix fixed fins (20mm x 200mm) set flush with facade at regular spacings, sliding fins 40mm x 200mm set back from facade internal glazing balustrade.  
 7. Inward opening aluminum windows, 60mm x 200mm or 200mm x 200mm, recessed in profilled metal to mitigate overlooking, recess finish around window to maintain substance.  
 8. Glazed roof supported on 75mm x 60mm concrete finial spigot centres.  
 9. Rooflights, frames, steel, flush with standing seam roof, manufacturer The Rooflight Company range Neo for similar.  
**ROOF FINISHES:**  
 9. Standing seam copper-alloy to match profilled metal cladding, TECU or similar.  
 10. All gutters and downpipes to be concealed.  
 11. Rampjet capping to match profilled metal cladding, TECU or similar.  
 12. Brown roof over Unit 1 to increase biodiversity.

**BRICK CLADDING:**  
 13. Perimeter bricks, (200mm x 100mm x 50mm), warm red, freestone bond with alternate bricks omitted in sections, with recessed level finish.  
 14. Windows to sit behind fixed brick facade. Stagger bond setting out to have missing bricks as shown on elevation.  
**EXTERNAL FLOOR FINISHES:**  
 15. Forecourt - hardened limestone external paving, flamed finish.  
 16. Basement courtyards - limestone external paving, flamed finish.  
 17. Unit 1 Terrace - Roof Terraces - Cedar decking with rough planed finish.  
**OTHER:**  
 18. Bespoke Glazed roof access hatch to private terraces.  
 Note: Roof terraces to be fixed with beacon alarm system for fire safety purposes. Final solution to be approved by building control officer.  
 19. Forecourt balustrade - to match profilled metal cladding, TECU or similar.  
 20. Roof Terrace planter - to match profilled metal cladding, TECU or similar.  
 21. Glazed Terrace balustrade.

**LANDSCAPE SPECIFICATION:**  
**FLOOR FINISHES (outside Unit 01)**  
 1. Recycled and reuse existing granite sets, flat topped and smooth top.  
 2. Paving - width 150mm, precast concrete panels with circular glass pavement lights. Manufacturer: Luxcrete or similar.  
**SHARED SURFACE (outside Unit 01 - 04)**  
 3. Robust large format limestone paving suitable for heavy duty access by emergency and servicing vehicles. Manufacturer: Hardscape.  
**FOOTPATH, FORECOURT & COURTYARDS:**  
 4. Limestone paving, varied smooth and rough split texture, 200mm x 600mm.  
 5. Tree pits with limestone edging and tree grilles. Manufacturer: Hardscape.  
**LIGHTING:**  
 6. Recessed flush into soffits of building overhangs. Manufacturer: Louis Poulsen.  
**PLANTING:**  
 7. Native species planted in zone along listed wall.

**PLANNING ISSUE**



| REV | DATE | DESCRIPTION |
|-----|------|-------------|
|     |      |             |

**THE OLD DAIRY**  
 WAKEFIELD STREET  
 LONDON  
 Lower Ground Floor

| DRNG No          | SCALE    | DATE     |
|------------------|----------|----------|
| 1250-11-002-PA02 | 1:100@A0 | May 2017 |

