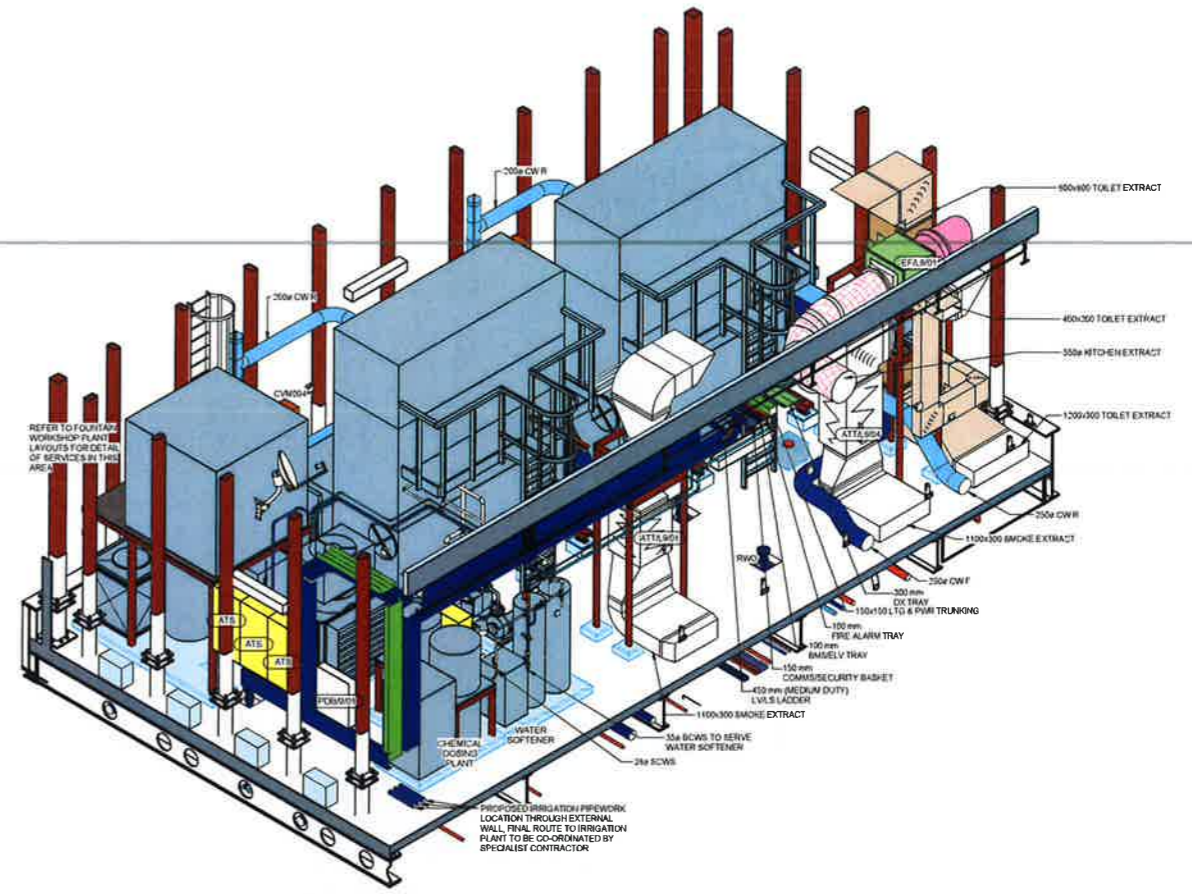
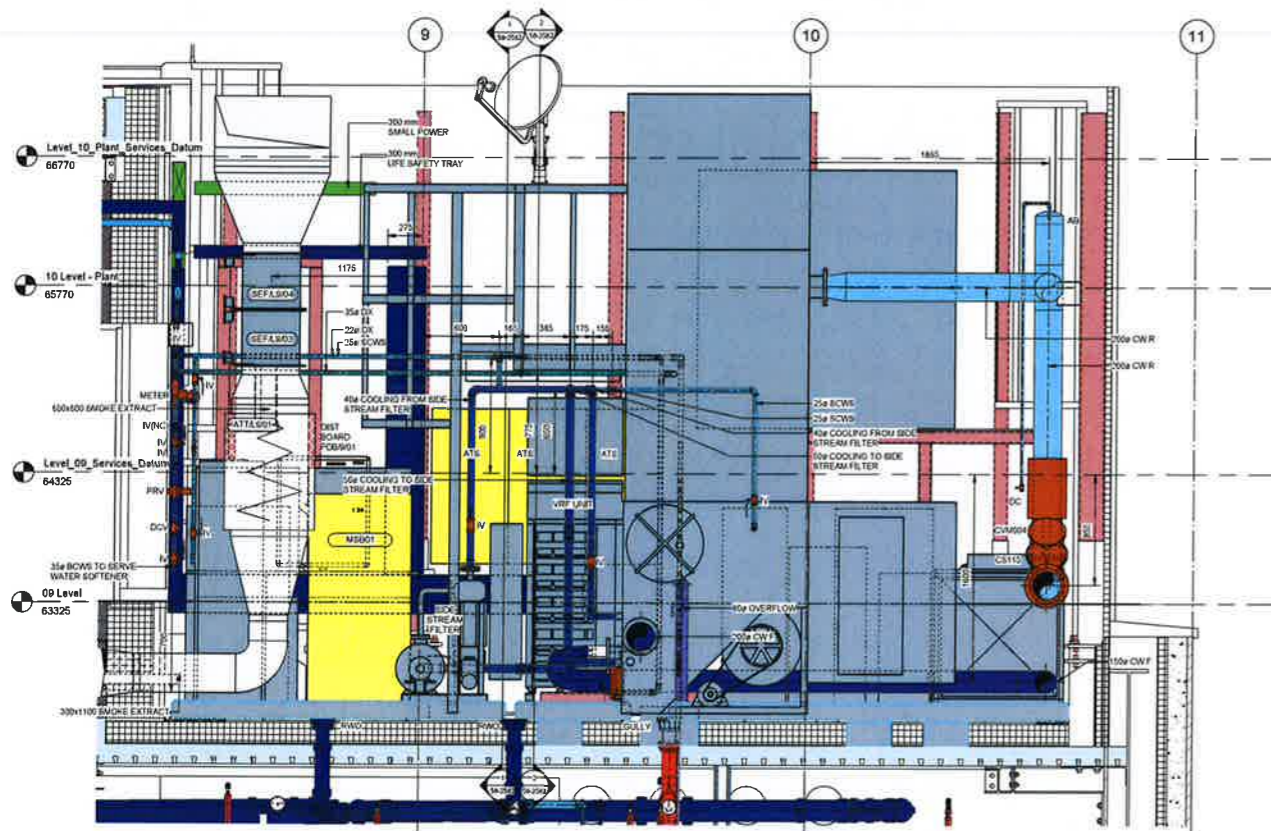


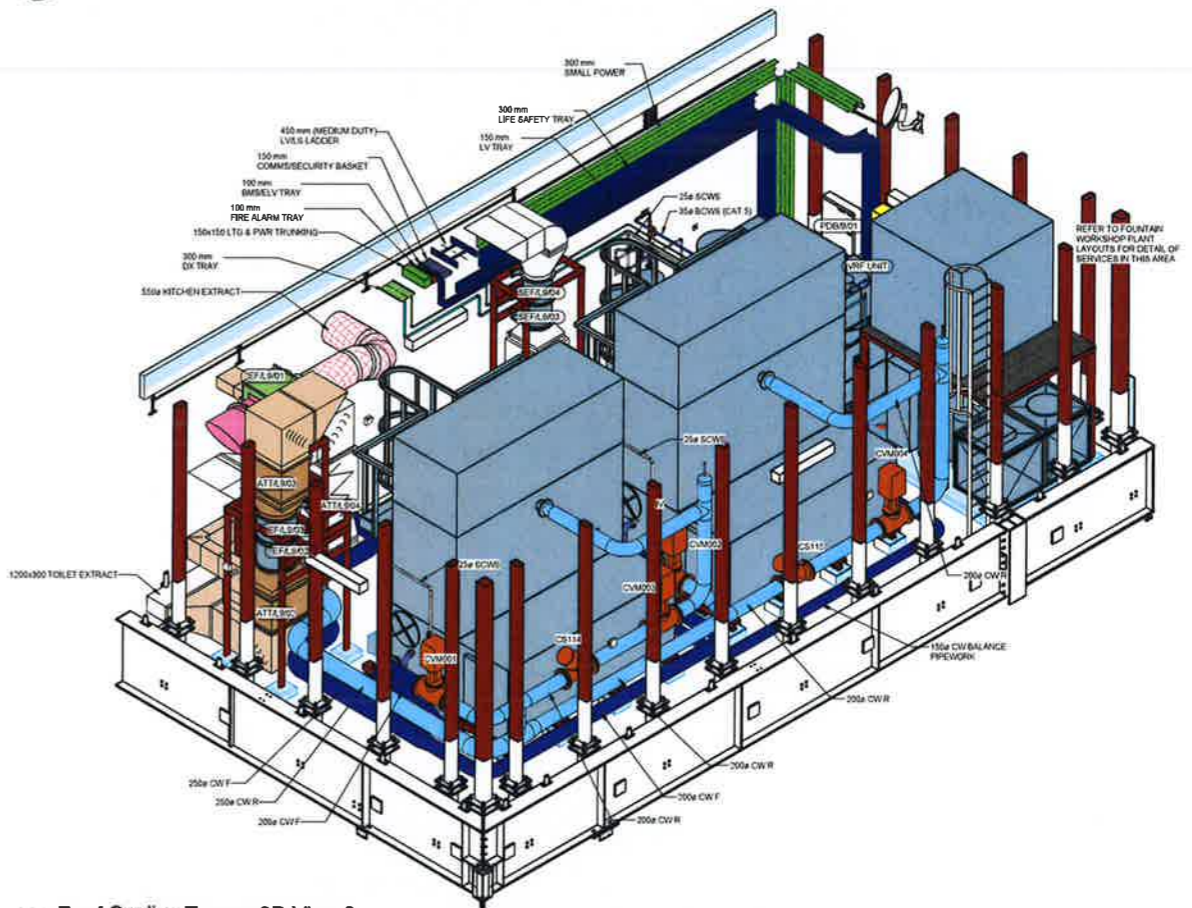
1 Cooling Towers Section C - C
1 : 20



3 Roof Cooling Towers 3D View 1



2 Cooling Towers Section D - D
1 : 20



4 Roof Cooling Towers 3D View 2

<p>DO NOT SCALE FROM THIS DRAWING. ALL DIMENSIONS TO BE CHECKED ON SITE.</p> <p>FOR SYMBOLS LEGEND AND ABBREVIATIONS REFER TO DRAWING BSE4654-001</p> <p>THIS DRAWING IS TO BE READ IN CONJUNCTION WITH THE ARCHITECTS AND STRUCTURAL ENGINEERS DRAWINGS AND WITH THE PROJECTS SCHEDULES AND SPECIFICATIONS.</p>		<p>THIS DRAWING IS TO BE READ IN CONJUNCTION WITH THE RELEVANT DETAILS AND SCHEMATICS.</p> <p>EXPANSION AND DEVICE SELECTION TO BE REVIEWED BY THE NETWORK SUB CONTRACTOR & THEIR SELECTED SPECIALIST - ANCHORS & GUIDES TO BE POSITIONED ACCORDINGLY.</p>		<p>TURNING VANES / SPLITTERS TO BE PROVIDED IN MITERED / SHORT RADIUS BENDS AS PER DW144</p> <p>DRAIN COCKS TO BE FITTED ON ALL LOW POINTS & AIR VENTS FITTED ON ALL HIGH POINTS OF LVH&V CHAN PIPEWORK.</p> <p>FIRE RATED DUCTWORK IS INDICATED WITH CROSS-HATCHED SHOWN THUS:</p>		<p>SERVICES DATUM LEVELS: ALL SERVICES ABOVE DATUM SHOWN DOTTED; BELOW DATUM SHOWN SOLID. RECTANGULAR & FLAT DUAL DUCTS, ELECTRICAL BUSBARS, CABLE LADDERS, TRAYS, TRIPPING & CONTROL LINE OF CONDUITS & PIPEWORK LEVELS PROVIDED INDICATE INSERT LEVEL OF BSL. DUALITY INDICATES & CONCENTRATES PIPE ABOVE DATUM LEVEL. LEVELS PREFIXED 'D' INDICATE LEVEL TO TOP OF PIPE FOR SYPHONIC MANIFEST ABOVE DATUM</p>		<table border="1"> <tr><td>SOFFIT LEVEL</td><td>VARIABLES</td></tr> <tr><td>CEILING LEVEL</td><td>VARIABLES</td></tr> <tr><td>DATUM LEVEL</td><td>64.325</td></tr> <tr><td>FINISHED FLOOR LEVEL</td><td>63.325</td></tr> <tr><td>STRUCTURAL SLAB LEVEL</td><td>62.225</td></tr> </table>	SOFFIT LEVEL	VARIABLES	CEILING LEVEL	VARIABLES	DATUM LEVEL	64.325	FINISHED FLOOR LEVEL	63.325	STRUCTURAL SLAB LEVEL	62.225	<table border="1"> <tr><td>REV</td><td>NO</td><td>DATE</td><td>BY</td><td>DESCRIPTION</td></tr> <tr><td> </td><td> </td><td> </td><td> </td><td> </td></tr> </table>	REV	NO	DATE	BY	DESCRIPTION								<table border="1"> <tr><td colspan="2">CONSTRUCTION</td></tr> <tr><td>DATE</td><td>18/11/16</td></tr> <tr><td>SCALE</td><td>1:20 @ A0</td></tr> <tr><td>PROJECT</td><td>Kings Cross -R1</td></tr> <tr><td>SHEET</td><td>Roof Cooling Towers</td></tr> <tr><td>NO</td><td>Co-ordinated Services Sections</td></tr> <tr><td>REV</td><td>Sheet 2</td></tr> <tr><td>DATE</td><td>18/11/16</td></tr> <tr><td>BY</td><td>MV</td></tr> <tr><td>CHECKED</td><td>TO</td></tr> <tr><td>APPROVED</td><td>BY</td></tr> <tr><td>DATE</td><td>18/11/16</td></tr> <tr><td>PROJECT</td><td>BSE4654 M</td></tr> <tr><td>NO</td><td>56-2583</td></tr> <tr><td>REV</td><td>001</td></tr> </table>	CONSTRUCTION		DATE	18/11/16	SCALE	1:20 @ A0	PROJECT	Kings Cross -R1	SHEET	Roof Cooling Towers	NO	Co-ordinated Services Sections	REV	Sheet 2	DATE	18/11/16	BY	MV	CHECKED	TO	APPROVED	BY	DATE	18/11/16	PROJECT	BSE4654 M	NO	56-2583	REV	001
SOFFIT LEVEL	VARIABLES																																																													
CEILING LEVEL	VARIABLES																																																													
DATUM LEVEL	64.325																																																													
FINISHED FLOOR LEVEL	63.325																																																													
STRUCTURAL SLAB LEVEL	62.225																																																													
REV	NO	DATE	BY	DESCRIPTION																																																										
CONSTRUCTION																																																														
DATE	18/11/16																																																													
SCALE	1:20 @ A0																																																													
PROJECT	Kings Cross -R1																																																													
SHEET	Roof Cooling Towers																																																													
NO	Co-ordinated Services Sections																																																													
REV	Sheet 2																																																													
DATE	18/11/16																																																													
BY	MV																																																													
CHECKED	TO																																																													
APPROVED	BY																																																													
DATE	18/11/16																																																													
PROJECT	BSE4654 M																																																													
NO	56-2583																																																													
REV	001																																																													