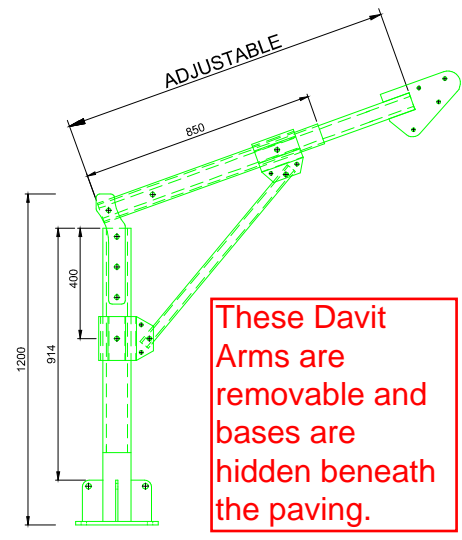
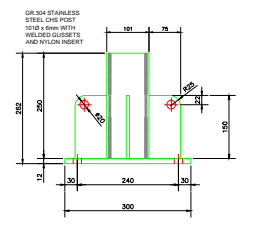
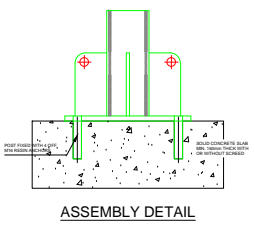


Davit Details

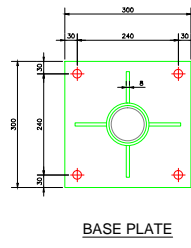


These Davit Arms are removable and bases are hidden beneath the paving.

Davit base load 22KN

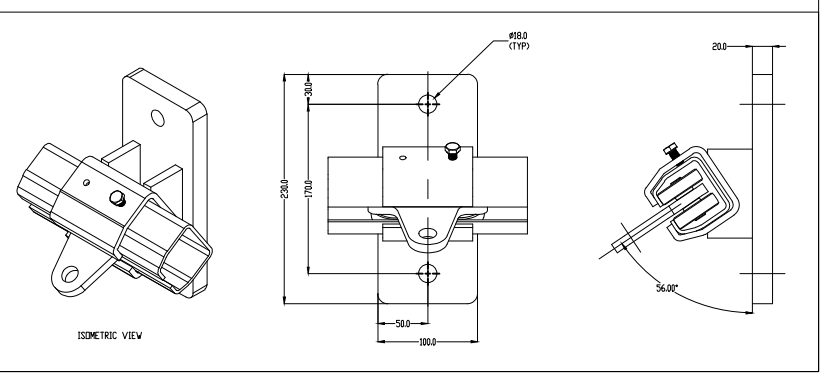


SECTION



BASE PLATE

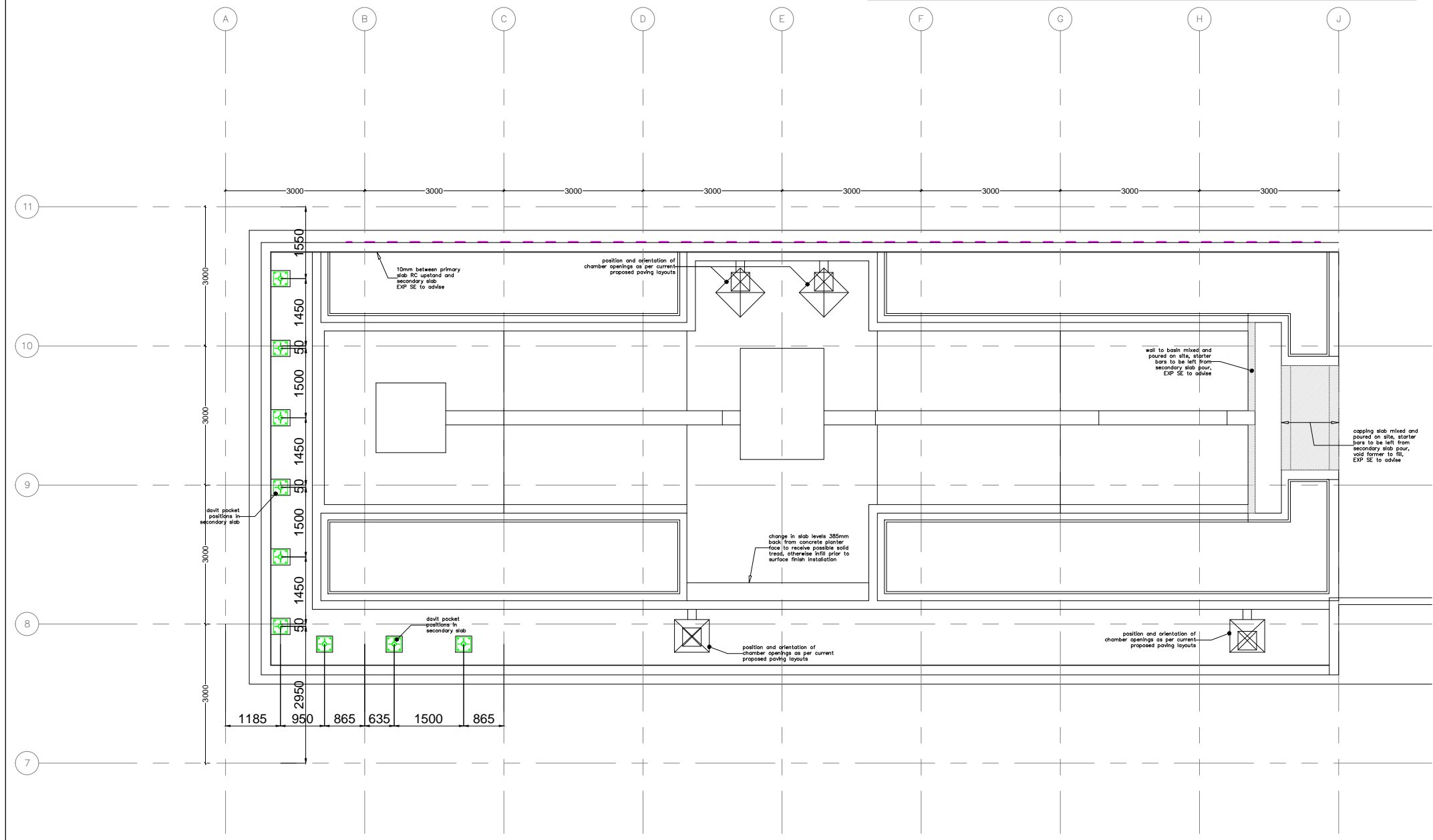
Abseil Track and Trolley Detail



LEGEND:

- Davit socket
- High Level Abseil Trolley

Please refer to PTSG Drawing LJ5252-5 Sky Park Abseil Track



LEVEL 09 SKY PARK ACCESS & MAINTENANCE PLAN



Access and Safety Ltd

PTSG Access and Safety Ltd.
13 - 14 Flemming Court
Whistler Drive
Glasshoughton
TEL 01977 668 771
FAX 01977 668 772
www.ptsg.co.uk

CLIENT **BAM**

PROJECT **KINGS CROSS R1**

DRAWING TITLE **ABSEIL DESIGN LAYOUT - ROOF PLAN (SKY PARK)**

DRAWING NUMBER **LJ5252-4**

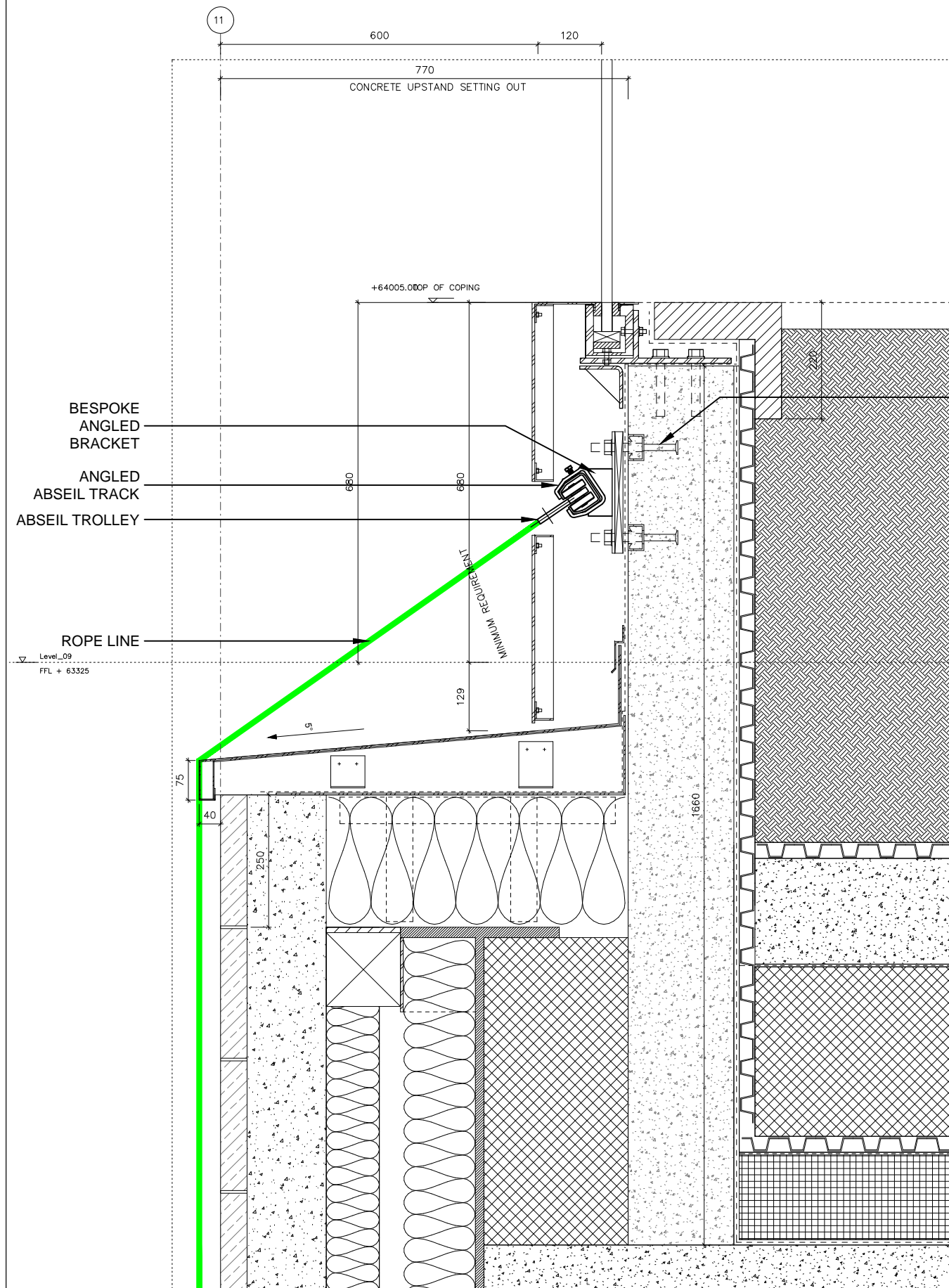
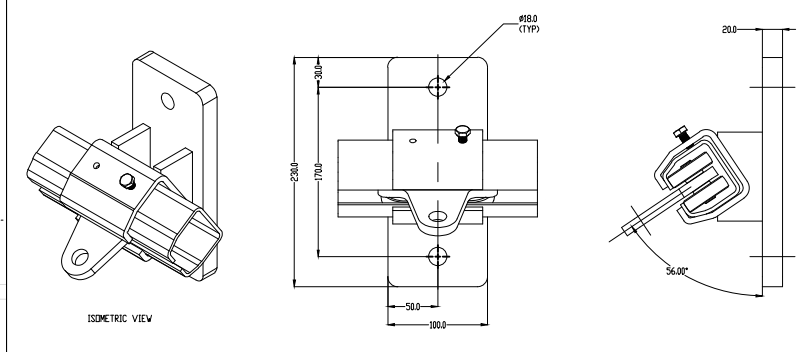
SCALE	DRAWN	DATE	LOCATION
NTS	CN	22.02.2017	UK

PROJECT NO.	CHECKED	OFFICE	DELIVERY
	WA	OCKE	-

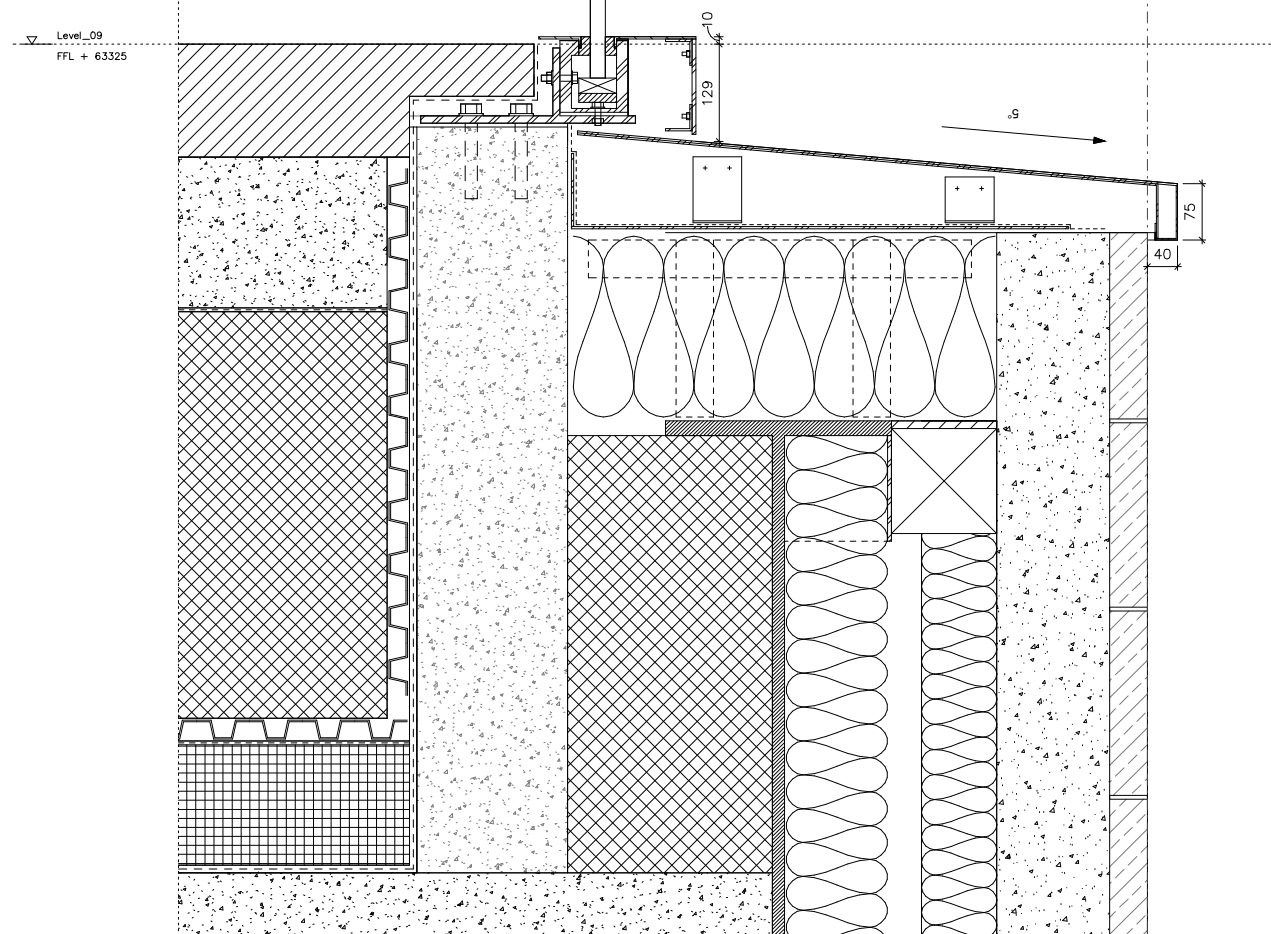
REV	DESCRIPTION	DATE	NAME
00	FOR INFORMATION	22.02.17	WTM
01	UPDATED AS PER COMMENTS	16.05.17	WTM

THE INFORMATION CONTAINED HEREIN IS THE PROPERTY OF PTSG ACCESS AND SAFETY LIMITED AND IS NOT TO BE ALTERED, REPRODUCED OR COMMUNICATED TO A THIRD PERSON OR USED IN ANY MANNER WHATSOEVER WITHOUT THE EXPRESS WRITTEN PERMISSION OF PTSG ACCESS AND SAFETY LIMITED. DO NOT SCALE FROM THIS DRAWING.

Abseil Track and Trolley Detail



RESIN ANCHORED FIXING BRACKET. FIXING CENTRES 1500MM. SYSTEM 500MM TRACK.



LJ5252-5 Sky Park Abseil Track Drawing.



Access and Safety Ltd

PTSG Access and Safety Ltd. TEL 01977 668 771
 13 - 14 Fleming Court FAX 01977 668 772
 Whistler Drive
 Glasshoughton www.ptsg.co.uk

CLIENT BELLAPART

PROJECT KINGS CROSS R1

DRAWING TITLE SECTION SHOWING ABSEIL TRACK

DRAWING NUMBER LJ5252-5

SCALE NTS	DRAWN CN	DATE 29.03.2017	LOCATION UK
-----------	----------	-----------------	-------------

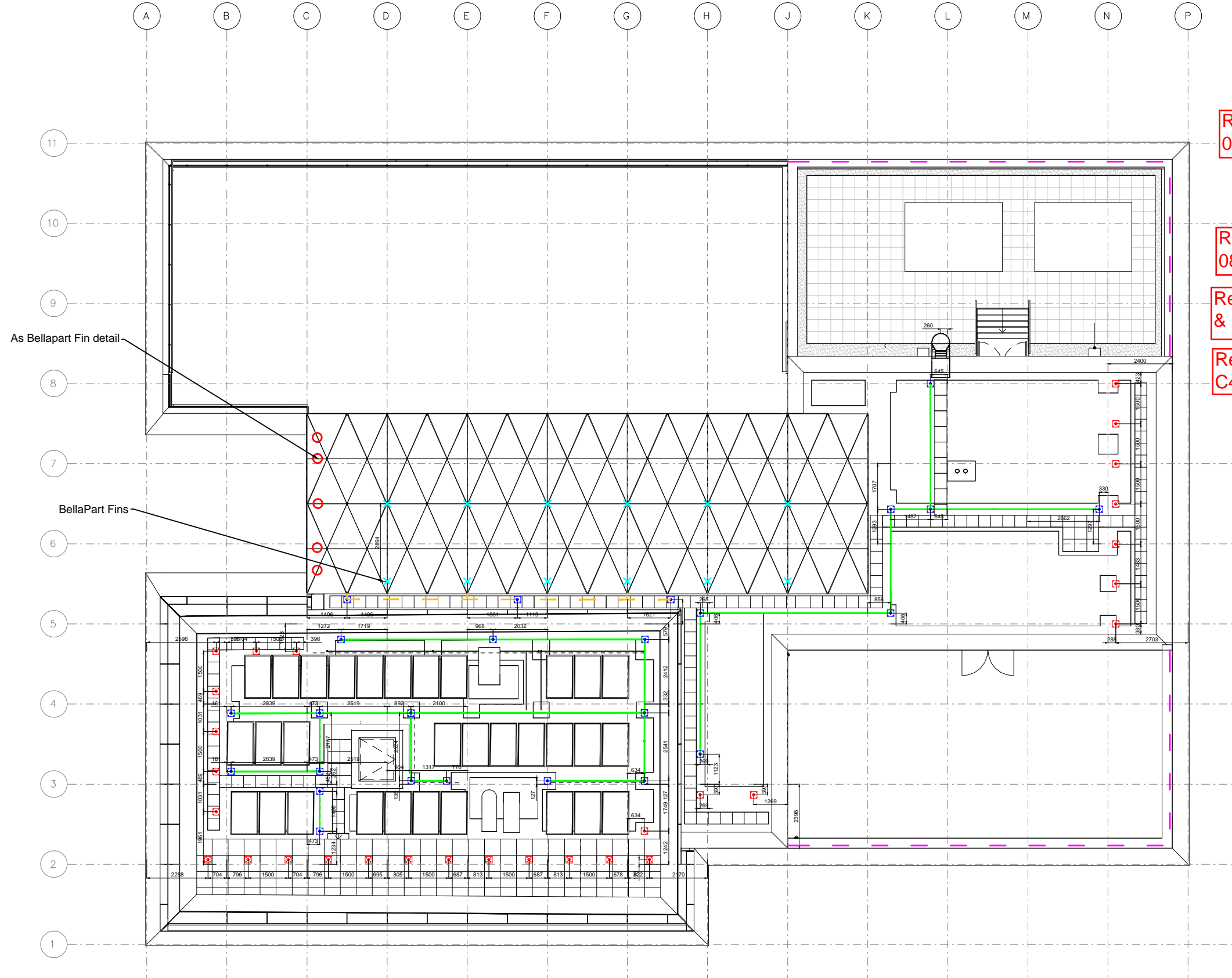
PROJECT NO.	CHECKED WA	OFFICE. OCKE	DELIVERY -
-------------	------------	--------------	------------

REV	DESCRIPTION	DATE	NAME
00	FOR INFORMATION	29.03.17	WTM
A	FOR APPROVAL	10.05.17	WTM

THE INFORMATION CONTAINED HEREIN IS THE PROPERTY OF PTSG ACCESS AND SAFETY LIMITED AND IS NOT TO BE ALTERED, REPRODUCED OR COMMUNICATED TO A THIRD PERSON OR USED IN ANY MANNER WHATSOEVER WITHOUT THE EXPRESS WRITTEN PERMISSION OF PTSG ACCESS AND SAFETY LIMITED. DO NOT SCALE FROM THIS DRAWING.

1 DETAIL SECTION - SKY PARK WALL 01

2 DETAIL SECTION - SKY PARK WALL 02



Post details below.

Refer to Bellapart drawing 08-A10-V08

Post details below.

Refer to Bellapart drawing 08-A10-V08

Refer to drawing LJ5252-3 & Bellapart Drawing R40

Refer to Bellapart drawing C45

LEGEND:

- Mansafe System - (Loadings - End Post - 15KN, Int Post - 6KN)
- Abseil Point (Loadings - 15KN)
- Abseil Post (Loadings - 15KN)
- BellaPart Fins
- High Level Abseil Trolley
- Mansafe fixed to Mullion system

LEVEL 10 & ROOF ACCESS & MAINTENANCE PLAN

MANSAFE POST LOADINGS
 END POST - 15KN
 INT POST - 6KN

ABSEIL POST LOADINGS - 15KN

PTSG
 PREMIER TECHNICAL SERVICES GROUP

Access and Safety Ltd

PTSG Access and Safety Ltd.
 13 - 14 Flemming Court
 Whistler Drive
 Glasshoughton
 TEL 01977 668 771
 FAX 01977 668 772
 www.ptsg.co.uk

CLIENT **BAM**

PROJECT **KINGS CROSS R1**

DRAWING TITLE
MANSAFE AND ABSEIL DESIGN LAYOUT - ROOF PLAN

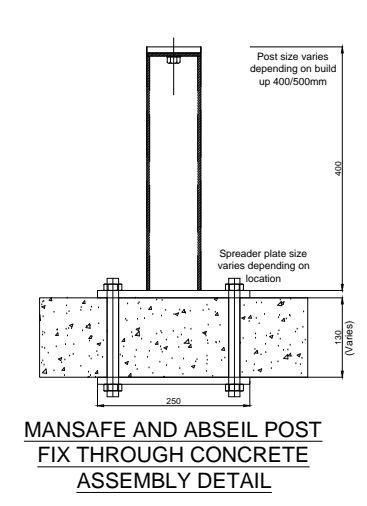
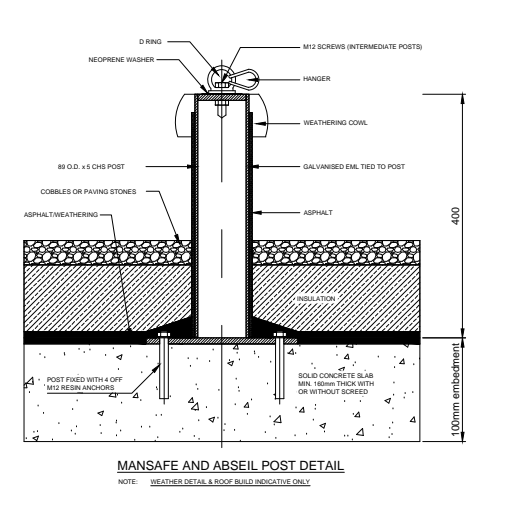
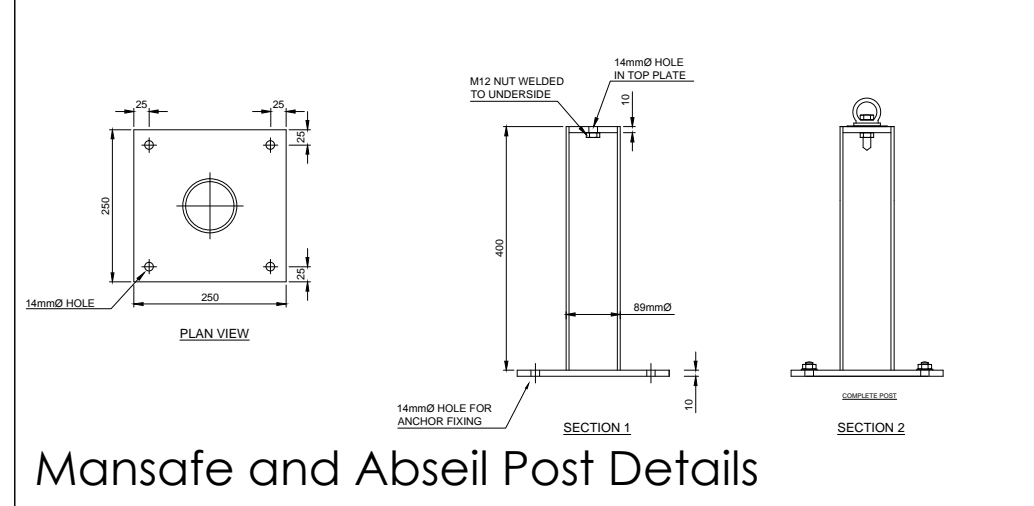
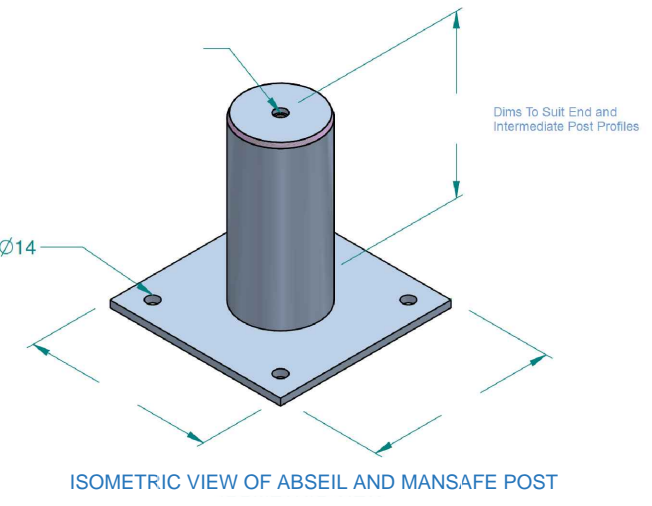
DRAWING NUMBER
LJ5252-1

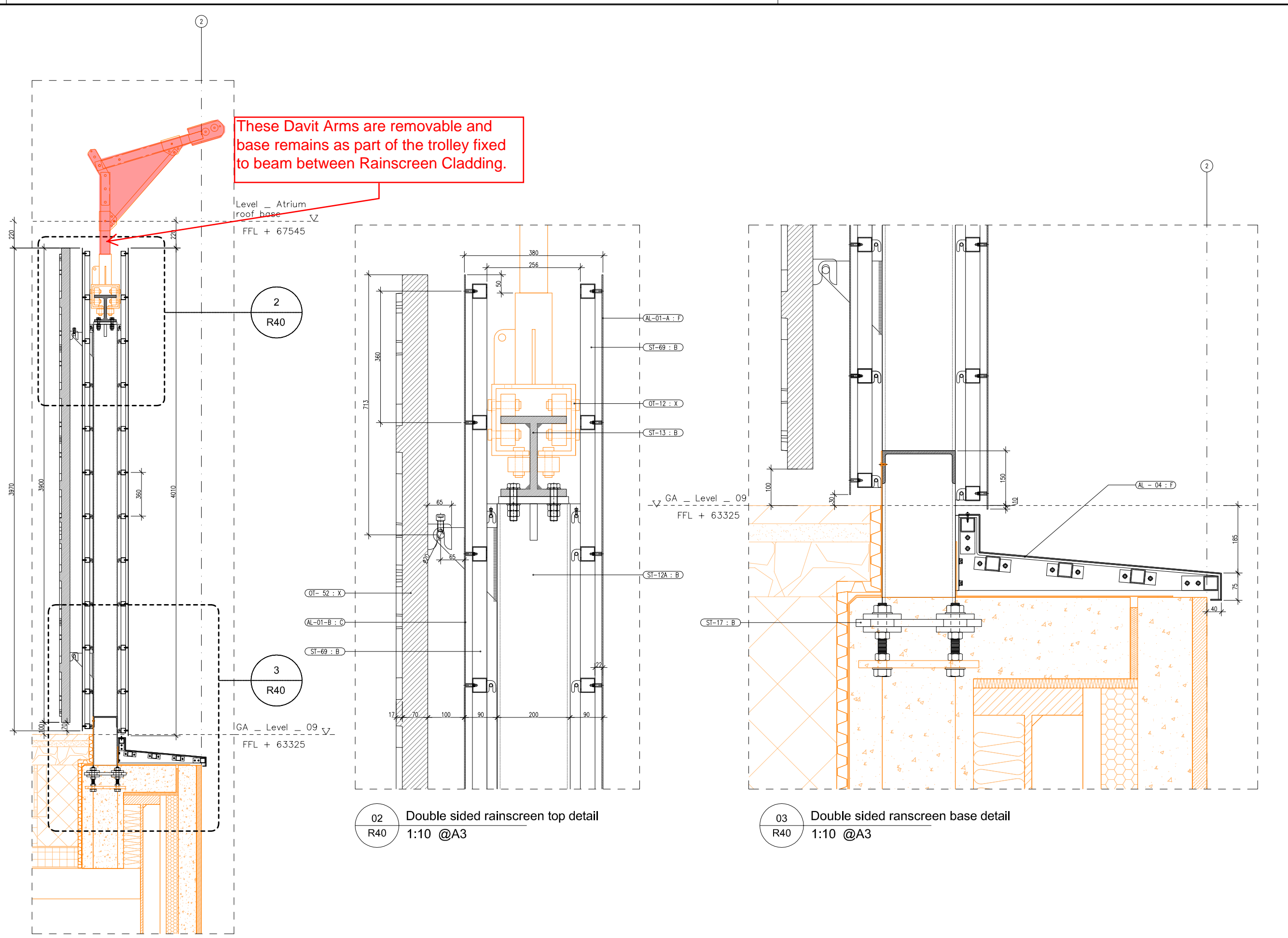
SCALE **NTS** DRAWN **CN** DATE **06.02.2017** LOCATION **UK**

PROJECT NO. **WA** CHECKED **WA** OFFICE **OCKE** DELIVERY **-**

REV	DESCRIPTION	DATE	NAME
03	UPDATED AS PER COMMENTS	07.04.17	WTM
04	UPDATED AS PER COMMENTS	24.04.17	WTM
05	UPDATED AS PER COMMENTS	08.05.17	WTM

THE INFORMATION CONTAINED HEREIN IS THE PROPERTY OF PTSG ACCESS AND SAFETY LIMITED AND IS NOT TO BE ALTERED, REPRODUCED OR COMMUNICATED TO A THIRD PERSON OR USED IN ANY MANNER WHATSOEVER WITHOUT THE EXPRESS WRITTEN PERMISSION OF PTSG ACCESS AND SAFETY LIMITED. DO NOT SCALE FROM THIS DRAWING.





These Davit Arms are removable and base remains as part of the trolley fixed to beam between Rainscreen Cladding.

High Level Abseil Trolley-Cooling Tower and Chahar Bagh To be read in conjunction with PTSG Fabrication detail LJ5252-3

	REV	DATE
PCSA	00	16/12/2015
PCSA	01	12/01/2016
PCSA	02	11/02/2016
PCSA	03	20/04/2016
PCSA	04	02/06/2016
AKDN	05	12/05/2017

Bellapart

Project: AKDN

Title: Anteroom garden double sided rainscreen

Project number: 1500018

Drawing scale: - @ A3

Drawn by: C.R.P.

Revision number: 05

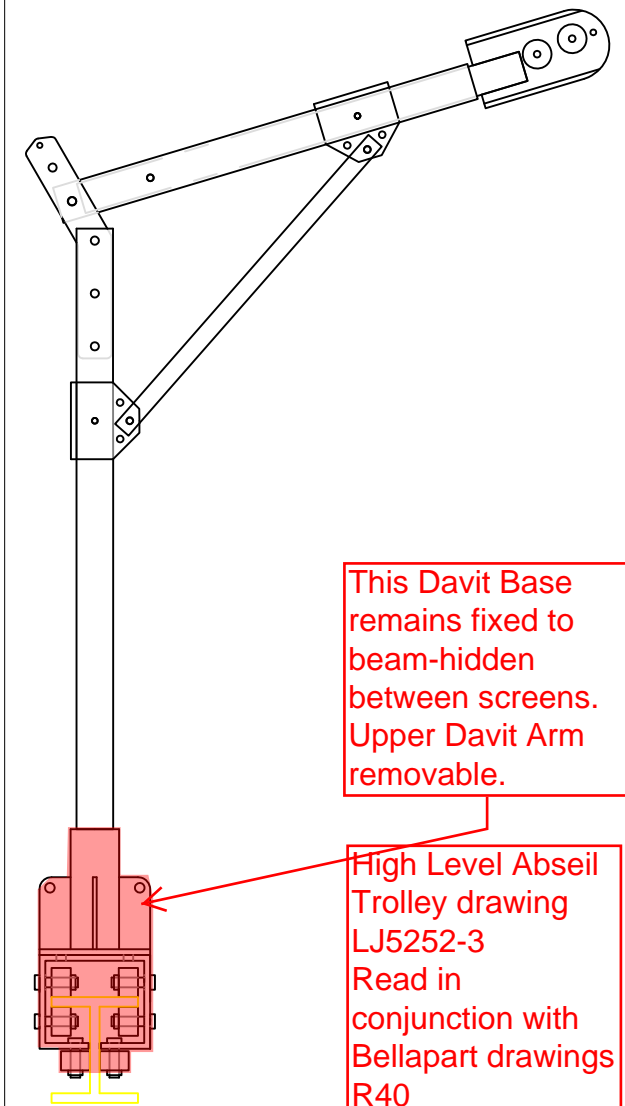
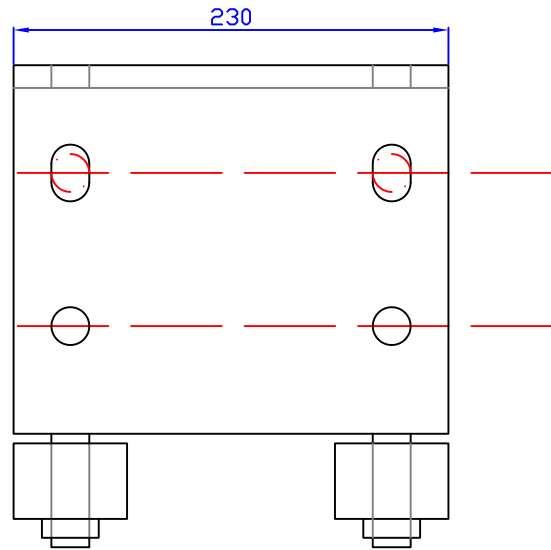
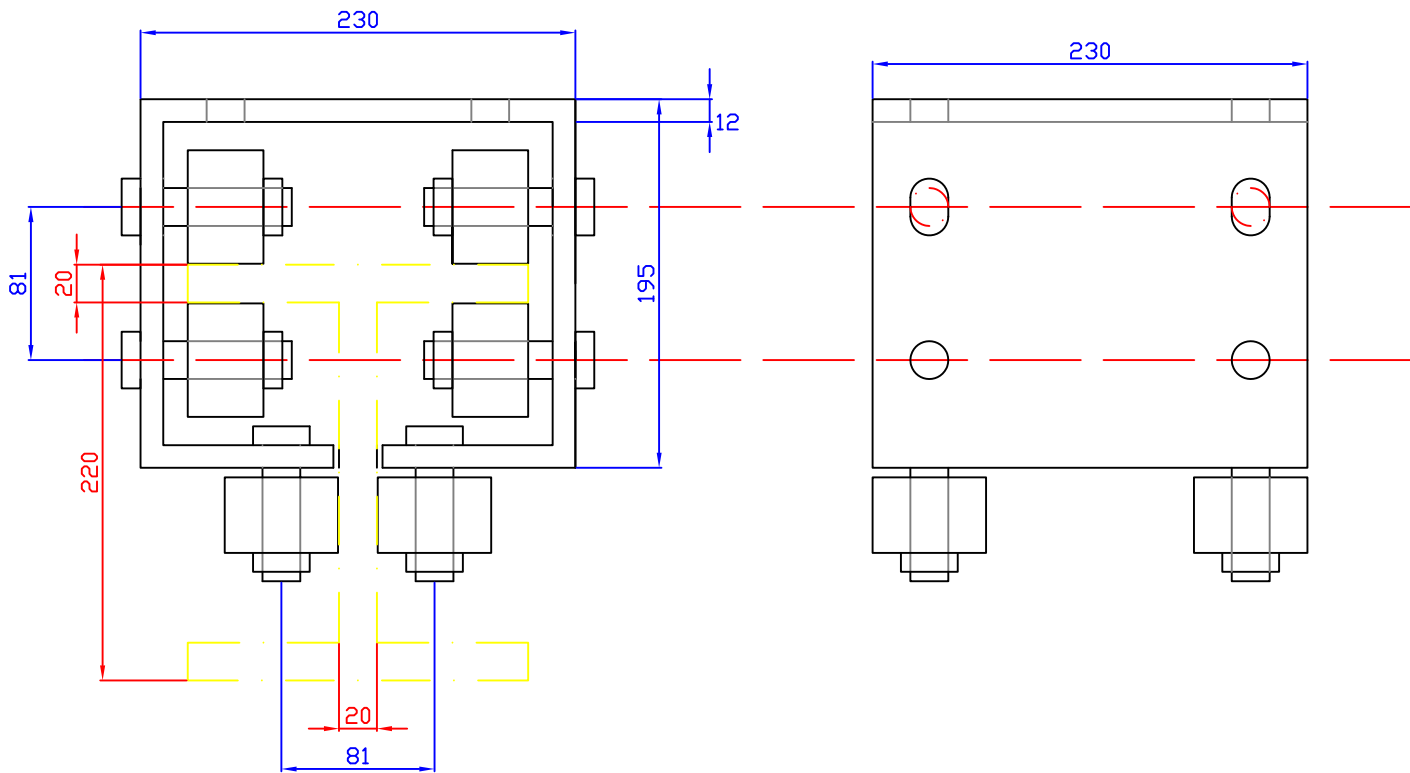
Revision date: 12/05/2017

Drawing Number: R40

01 Ante room garden double sided rainscreen
R40 1:30 @A3

02 Double sided rainscreen top detail
R40 1:10 @A3

03 Double sided rainscreen base detail
R40 1:10 @A3



This Davit Base remains fixed to beam-hidden between screens. Upper Davit Arm removable.

High Level Abseil Trolley drawing LJ5252-3 Read in conjunction with Bellapart drawings R40

I section trolley

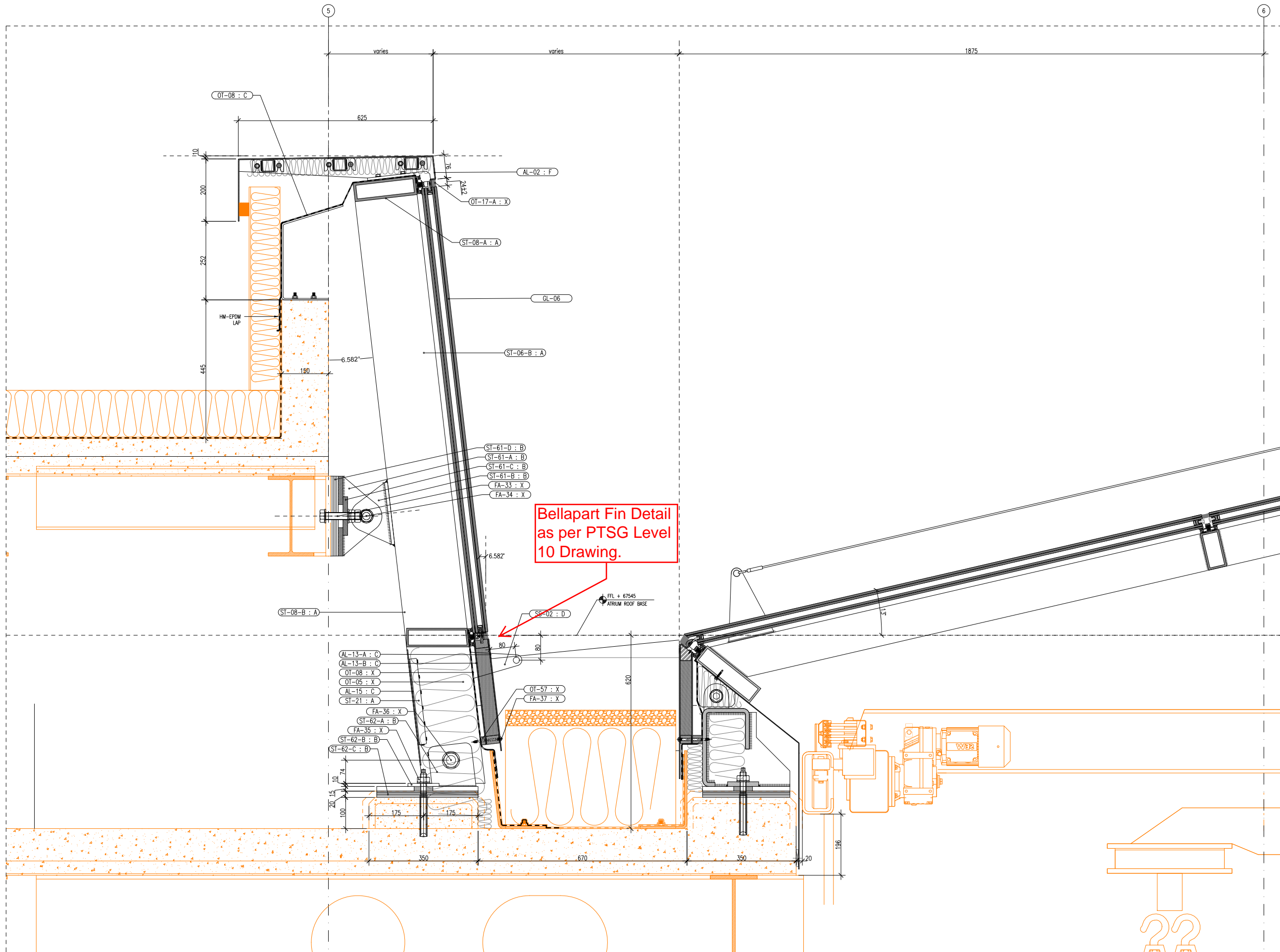
THIS DRAWING IS CONFIDENTIAL TO SAFETY ENGINEERING PRODUCTS LTD. AND NEITHER THE DRAWING ITSELF, NOR ANY INFORMATION DERIVED FROM IT, SHOULD BE MADE PUBLIC, OR DIVULGED, EVEN IN CONFIDENCE TO ANOTHER PARTY WITH OUT EXPRESS PERMISSION OF THE COMPANY.

Material: Stainless steel, Nylon
Finish: Mill

Version 1.1
Date: 03/05/2017

Unit 9
Parkway link estate
Sheffield
S9 3AS
01142611112

SEP
SAFETY ENGINEERING
PRODUCTS



**Bellapart Mansafe
Fixed to Mullion
System**

	REV	DATE
PCSA	00	16/12/2015
PCSA	01	12/01/2016
PCSA	02	11/02/2016
PCSA	03	20/04/2016
PCSA	04	02/06/2016
AKDN	05	14/07/2016
AKDN	06	30/12/2016

free minds
Bellapart
construction

Project:
AKDN

Title
Crown transversal
section interface with
atrium

Project number:
15018

Drawing scale :
1:12 @ A3

Drawn by :
M.R.C.

Revision number:
06

Revision date:
30/12/2016

Drawing Number
C45

1 Atrium - Crown Interface
C45 1:12 @A3