

LZ 25 - St. Mark's Bridge

Code/Seq: 2079

Location: London Zoo

Site: LZ 25 - St. Mark's Bridge

House/Lochn: LZ02079

Species: Fraxinus sp. (Ash)

Common:

Owner: The Royal Parks

Grid Ref: TQ28-8242-3672

Last Inspection 28/02/2017

Inspector AC

Height: 7-14 metres

Spread: 9 to 12 meters

Trunk: 410mm

Age: Semi-mature

Failure: Likely/Foresee

Target: Very High

Impact: Medium 35-10

Authority: Camden

Features: None recorded..

Recommendations:

Conditions: Bark wounding - Branch ripped out at
5m south side of trunkCrown reduction as specified - reduce whole crown by
2 to 2.5 metres radially back to previous pruning
points

Poor form

Previously reduced - but now in need
of topwpr crown reduction to mitigate
stem wound, relative poor form of
individual limbs.

Inspectors Comments:

n/a

Priority: Medium

LZ 25 - St. Mark's Bridge ...(contd)..

Code/Seq: 2080

Location: London Zoo

Site: LZ 25 - St. Mark's Bridge

House/Lochn: LZ02080

Species: Fraxinus sp. (Ash)

Common:

Owner: The Royal Parks

Grid Ref: TQ28-8239-3678

Last Inspection 28/02/2017

Height: 7-14 metres

Spread: 9 to 12 meters

Trunk: 480mm

Age: Mature

Features: None recorded..

Conditions: Previously reduced - limb towards traffic light has small pocket cavity on curve at final third of length and species is reliably fragile so repeat prune advised - reduce whole crown by 2 to 2.5 metres radially to prune back to previous pruning points

Priority: Medium

Inspector AC

Failure: Likely/Foresee

Target: Very High

Impact: Medium 35-10

Authority: Camden

Recommendations:

Crown reduction as specified - limb towards traffic light has small pocket cavity on curve at final third of length and species is reliably fragile so repeat prune advised - reduce whole crown by 2 to 2.5 metres radially to prune back to previous pruning points

Inspectors Comments:

n/a

LZ 25 - St. Mark's Bridge ...(contd)..

Code/Seq: 2081

Location: London Zoo

Site: LZ 25 - St. Mark's Bridge

House/Lochn: LZ02081

Species: Fraxinus excelsior (Common Ash)

Common:

Owner: The Royal Parks

Grid Ref: TQ28-8227-3670

Last Inspection 28/02/2017

Inspector AC

Height: 1.5-7.0 metres

Spread: Up to 3 metres

Trunk: 800mm

Age: Over-mature

Failure: Potentially

Target: High

Impact: Very Large >75

Authority: Camden

Features: Missing tag - not seen in any event

Recommendations:

Conditions: Fungal fruiting body - Inonotus hispidus on exposed heartwood at 2.5m and at 5m AC 190214 ~ no brackets but typical Inonotus decay profile, very likely to fail under own weight, not worthy of management or retention. Fell and secure to ground or remove. not worthy of retention on slope particularly.

Fell to ground - Fell and secure to ground or remove. not worthy of retention on slope particularly. remains a hazard because can only be deteriorating and may not be relied upon to stay in place in event of collapse.

Trunk cavity

Trunk decay

Priority: Medium

Inspectors Comments:

n/a

LZ 26a - Car Park (Pump Station)

Code/Seq: 2052

Location: London Zoo

Site: LZ 26a - Car Park (Pump Station)

House/Lochn: LZ02052

Species: Populus sp. (Poplar)

Common:

Owner: The Royal Parks

Grid Ref: TQ28-8302-3612

Last Inspection 07/03/2017

Height: 14-21 metres

Spread: 9 to 12 meters

Trunk: 750mm

Age: Mature

Features: None recorded..

Conditions: Previously reduced - re growth
approaching pre pruning dimensions

Priority: Medium

Inspector AC

Failure: Likely/Foresee

Target: Very High

Impact: Medium 35-10

Authority: Camden

Recommendations:

Reduce to previous reduction points

Remove deadwood

Inspectors Comments:

n/a

LZ 26a - Car Park (Pump Station) ...(contd)..

Code/Seq: 705

Location: London Zoo

Site: LZ 26a - Car Park (Pump Station)

House/Locn: LZ00705

Species: Malus sp. (Apple)

Common:

Owner: The Royal Parks

Grid Ref: TQ28-8337-3598

Last Inspection 14/03/2017

Height: 1.5-7.0 metres

Spread: Up to 3 meters

Trunk: 20mm

Age: Young

Features: None recorded..

Conditions: Epicormic growth - root stock giving rise to vigorous suckers likely to suppress the scion at west - prune out two suckers at centre and north-east to favour scion stem at west

Priority: Medium

Inspector AC

Failure: None Apparent

Target: Very High

Impact: Small <10

Authority: Camden

Recommendations:

Remove epicormics base/trunk - root stock giving rise to vigorous suckers likely to suppress the scion at west - prune out two suckers at centre and north-east to favour scion stem at west

Inspectors Comments:

n/a

LZ 26b - Car Park (Cumberland Basin)

Code/Seq: 2040

Location: London Zoo

Site: LZ 26b - Car Park (Cumberland Basin)

House/Lochn: LZ02040

Species: Prunus avium (Wild Cherry)

Common:

Owner: The Royal Parks

Grid Ref: TQ28-8367-3641

Last Inspection 14/03/2017

Height: 7-14 metres

Spread: 9 to 12 meters

Trunk: 320mm

Age: Semi-mature

Features: None recorded..

Conditions: Bark wounding - superficial canker on
stem at 3.3 metres east.

Low branches

Priority: Medium

Inspector AC

Failure: None Apparent

Target: Very High

Impact: Small <10

Authority: Camden

Recommendations:

Crown lift to 5.0m - above car park entrance. just tip
pruning required.

Inspectors Comments:

n/a

LZ 26b - Car Park (Cumberland Basin) ...(contd)..

Code/Seq: 2045

Location: London Zoo

Site: LZ 26b - Car Park (Cumberland Basin)

House/Lochn: LZ02045

Species: Platanus x hispanica (London Plane)

Common:

Owner: The Royal Parks

Grid Ref: TQ28-8346-3672

Last Inspection 07/03/2017

Inspector AC

Height: 14-21 metres

Spread: Over 12 metres

Trunk: 790mm

Age: Mature

Failure: Likely/Foresee

Target: Very High

Impact: Medium 35-10

Authority: Camden

Features: None recorded..

Recommendations:

Conditions: Leaning tree

Other - slender limb above footway at 10 metres with kink displays symptoms of high stress loading and active crack / developing fracture - shorten branch ends by 2 metres to stabilize and orune off dead side branch 2 metres from stem
Previously reduced - lateral limbs

Aerial inspection for Massaria

Reduce branch as specified - slender limb above footway at 10 metres with kink displays symptoms of high stress loading and active crack / developing fracture - shorten branch ends by 2 metres to stabilize and orune off dead side branch 2 metres from stem

Priority: Medium

LZ 26b - Car Park (Cumberland Basin) ...(contd)..

Code/Seq: 3493

Location: London Zoo

Site: LZ 26b - Car Park (Cumberland Basin)

House/Lochn: LZ03493

Species: Acer pseudoplatanus (Sycamore)

Common:

Owner: The Royal Parks

Grid Ref: TQ28-8356-3623

Last Inspection 14/03/2017

Height: 7-14 metres

Spread: 9 to 12 meters

Trunk: 370mm

Age: Mature

Features: None recorded..

Conditions: Low branches

Priority: Medium

Inspector AC

Failure: None Apparent

Target: Very High

Impact: Small <10

Authority: Camden

Recommendations:

Crown lift to 5.0m - above car park entrance pruning
back lower lateral branches to the row of stones in the
verge

Inspectors Comments:

n/a

LZ 26e - Car Park (Camden End)

Code/Seq: 2012

Location: London Zoo

Site: LZ 26e - Car Park (Camden End)

House/Lochn: LZ02012

Species: Prunus avium (Wild Cherry)

Common:

Owner: The Royal Parks

Grid Ref: TQ28-8610-3535

Last Inspection 14/03/2017

Height: 7-14 metres

Spread: 9 to 12 meters

Trunk: 560mm

Age: Mature

Features: None recorded..

Conditions: Bark wounding - chest height east.
superficialClimbing plant in crown - ivy beginning
to enter lower crown. advise control

Priority: Medium

Inspector AC

Failure: None Apparent

Target: Very High

Impact: Small <10

Authority: Camden

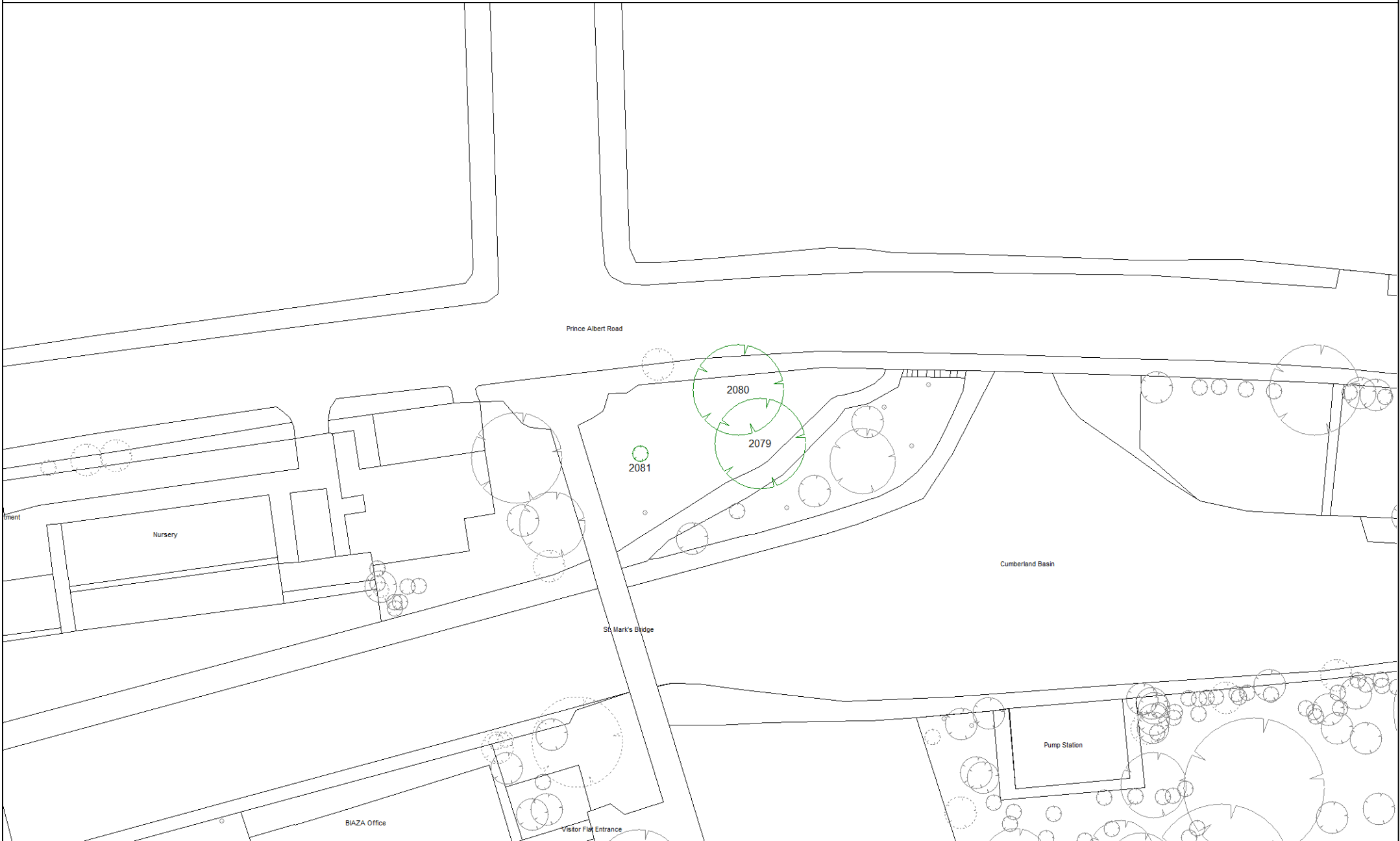
Recommendations:

Remove ivy from tree - sever all stems close to ground
level

Inspectors Comments:

n/a

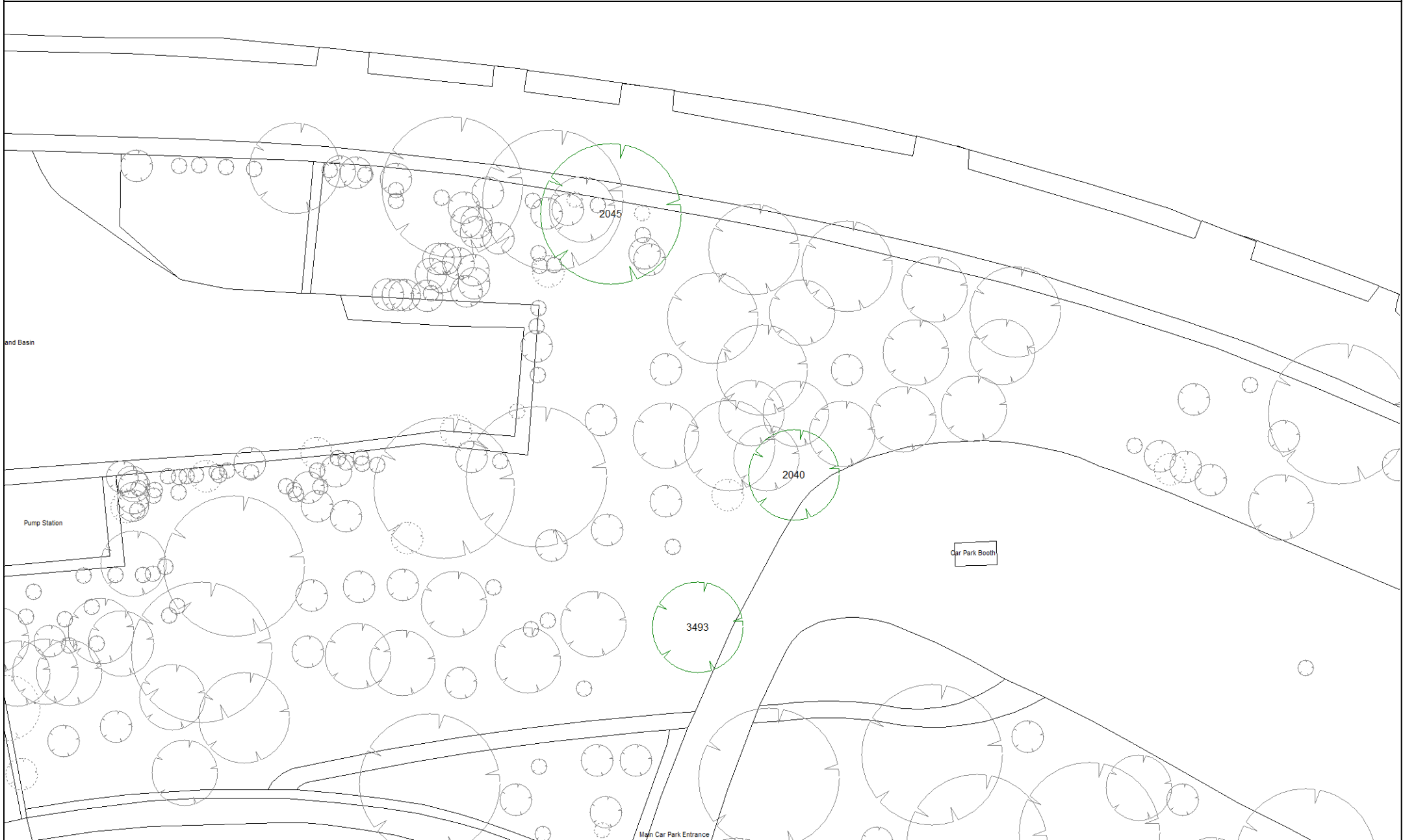
LZ 25 - St. Mark's Bridge



LZ 26a - Car Park (Pump Station)



LZ 26b - Car Park (Cumberland Basin)



and Basin

Pump Station

Car Park Booth

2045

2040

3493

Main Car Park Entrance

LZ 26e - Car Park (Camden End)

