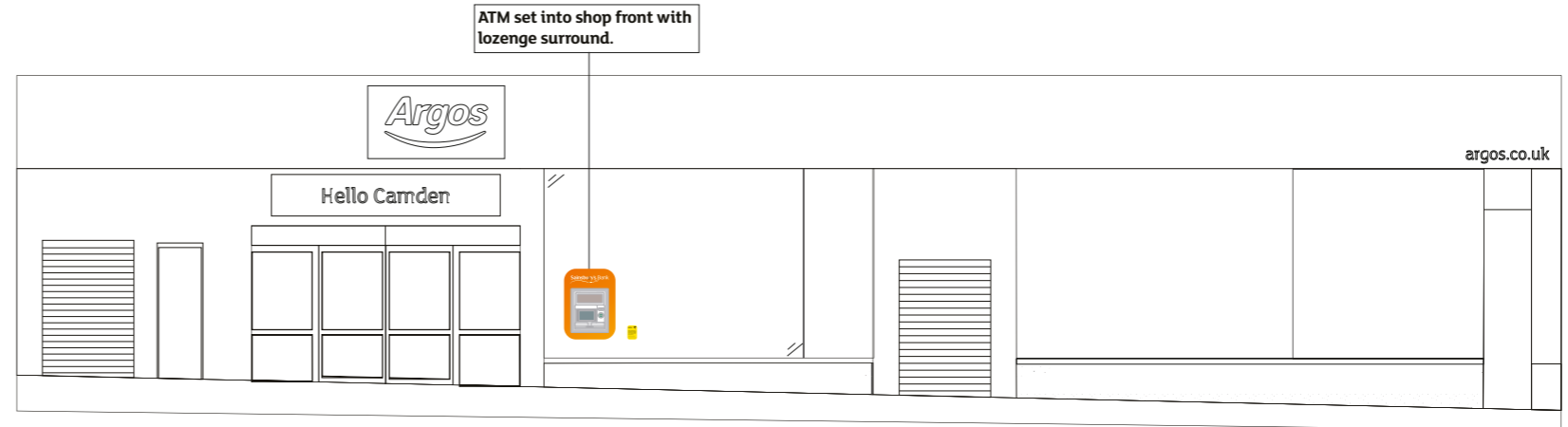
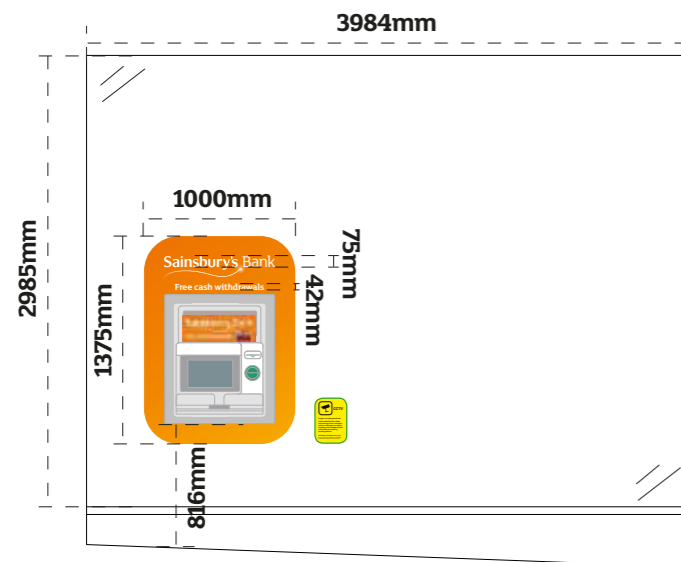




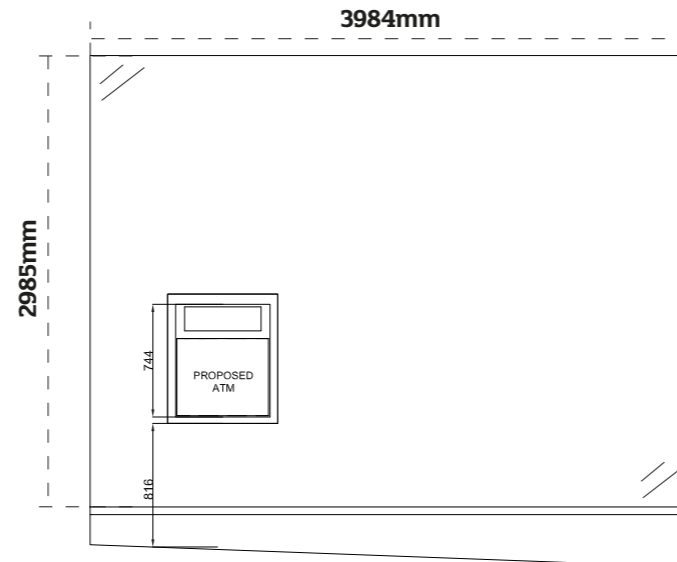
Photo of existing



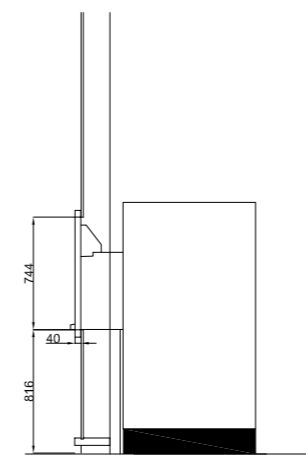
Proposed external elevation
1:100@A3



Proposed signage detail
1:50@A3
Non illuminated window vinyl.
Externally applied to glazing.
New CCTV vinyl lozenge externally applied.





Proposed ATM front elevation
1:50@A3

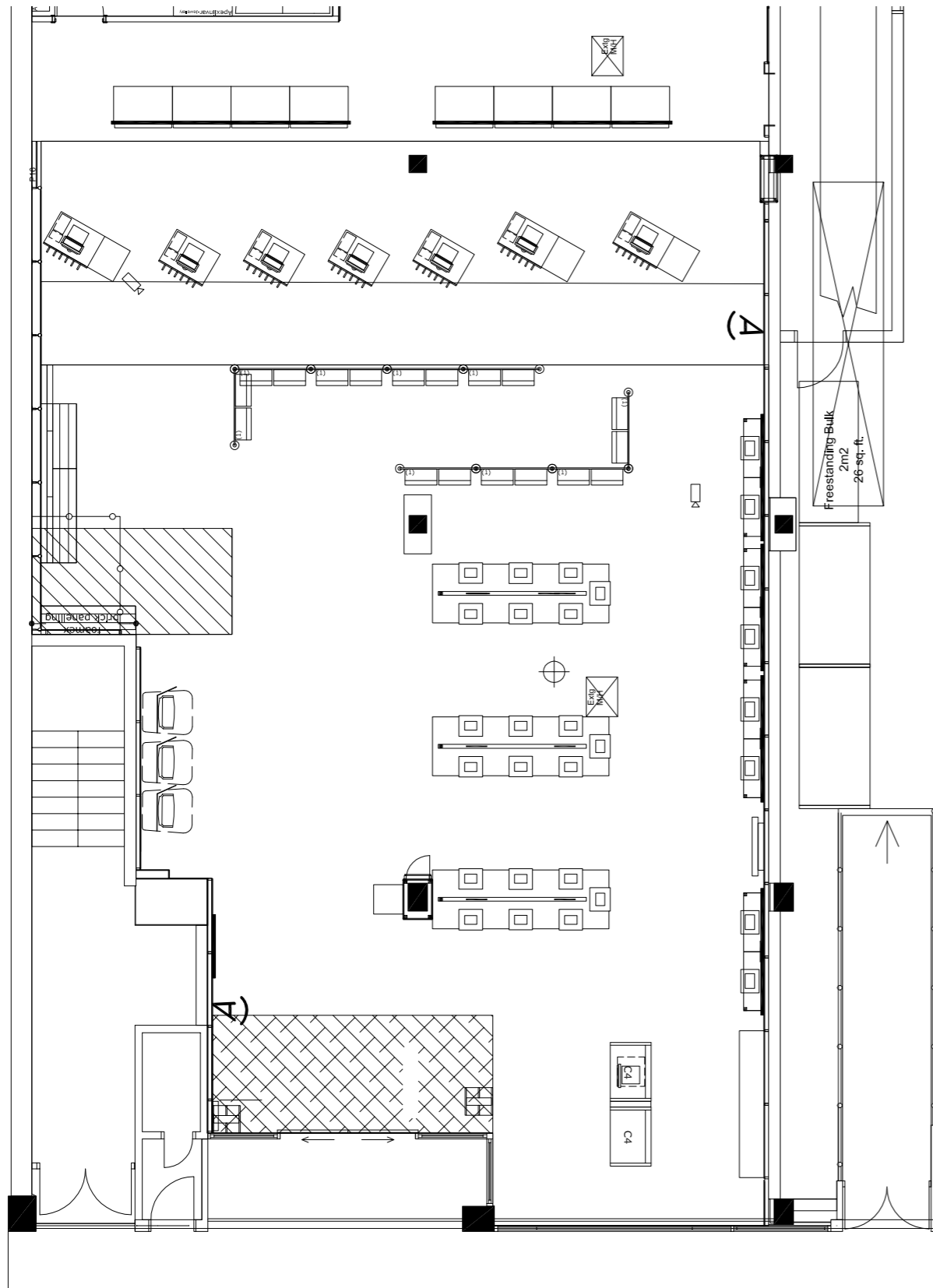


Proposed ATM side cross section
1:50@A3

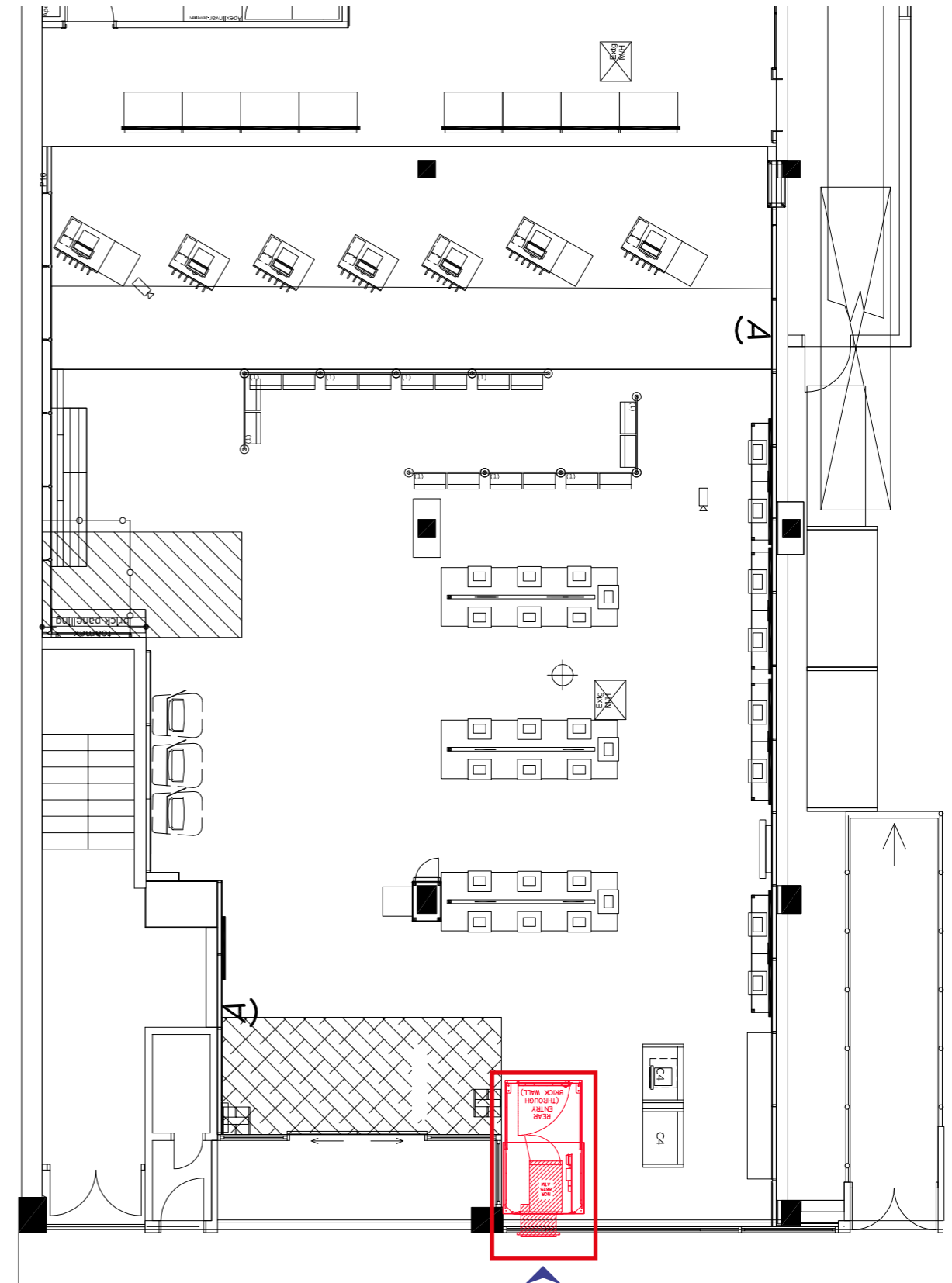


NOTES	REV	REVISIONS	DATE	REV	REVISIONS	DATE	ORIGINATOR	AUTHORISED	PROJECT	 Retail Design Solutions (Consultancy) Ltd Retail Design Solutions (Consultancy) Limited, The Mill Store, Foundry Lane, Early Gate, Essex, CO5 2SR Company Registration No: 4379384 Tel: 01797 224876 Fax: 01797 224776 www.retaildesignsolutions.com info@retaildesignsolutions.com	 STORE DEVELOPMENT GROUP, SAINSBURY'S SUPERMARKETS LTD 33 HOLBORN, LONDON, EC1N 2HT TELEPHONE:- 020 7695 6000 FAX:- 020 7695 7610
	1#	Initial Layout.	10.05.17				RDS/RH	SS	CAMDEN		
							DATE	SCALE	ATM PLANNING PROPOSAL		
							10.05.17	1:100 @A3 1:50 @A3	ADDRESS		
							DRAWING NUMBER	REVISION	ARGOS, 72-76 CAMDEN HIGH STREET, LONDON, NW1 0LT		
							0117G04-ATM	1#			

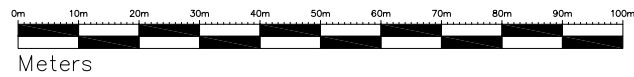
Existing plan
1:100@A3



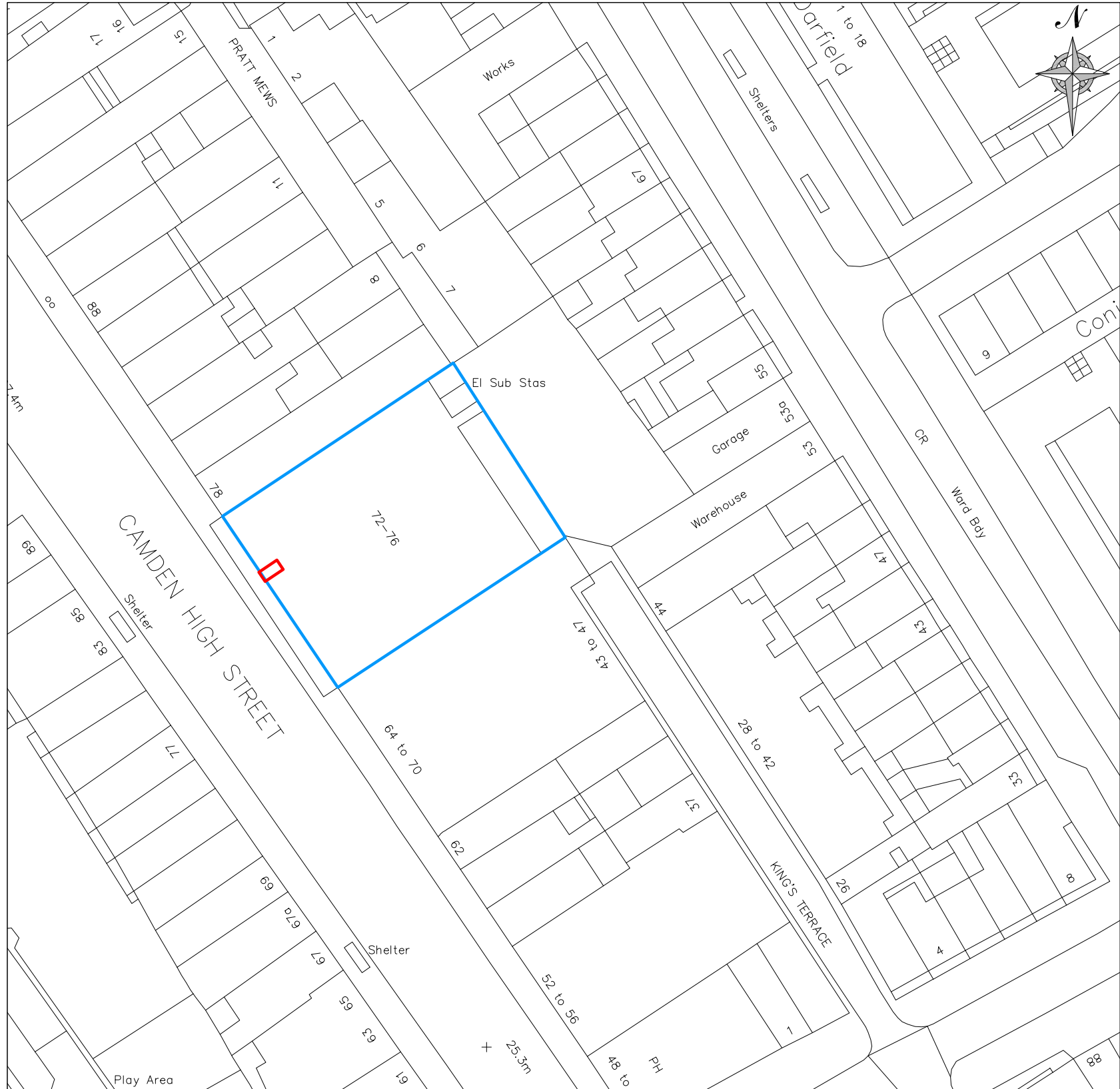
Proposed plan
1:100@A3



Proposed



Location Plan - 1:1250



Meters

Block Plan - 1:500

NOTES

REVISIONS

- Initial layout

0117
CAMDEN

LOCATION PLAN
AND BLOCK
PLAN

STORE PLANNER	-	AGENCY	RDS
FIRST ISSUED	-	SCALE	AS SHOWN
DRAWING NUMBER	0117	REVISION	-

Sainsbury's
STORE DEVELOPMENT GROUP, SAINSBURY'S SUPERMARKETS LTD
33 HOLBORN, LONDON, EC1N 2HT
TELEPHONE: 020 7695 6000 FAX: 020 7695 7610