

## Hampstead Sales

47 Heath Street  
London NW3 6UA

T: 020 7433 6600

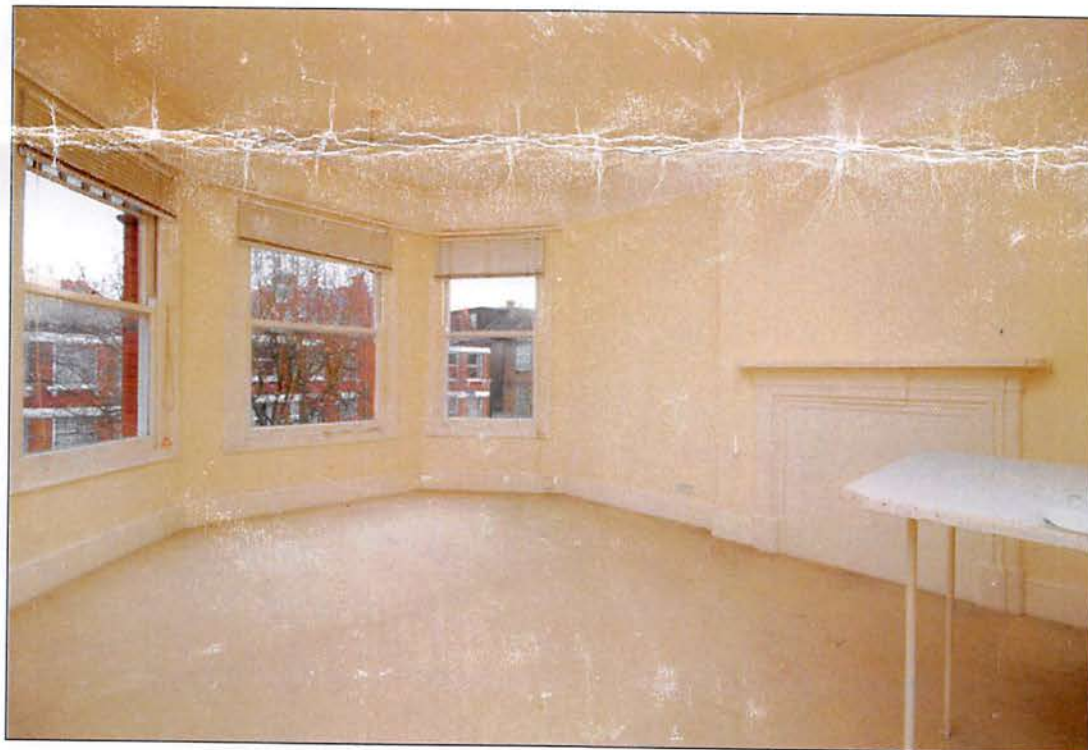
F: 020 7433 6645

Email: [Hampstead@foxtons.co.uk](mailto:Hampstead@foxtons.co.uk)

## FORDWYCH ROAD, WEST HAMPSTEAD, NW2 £169,950

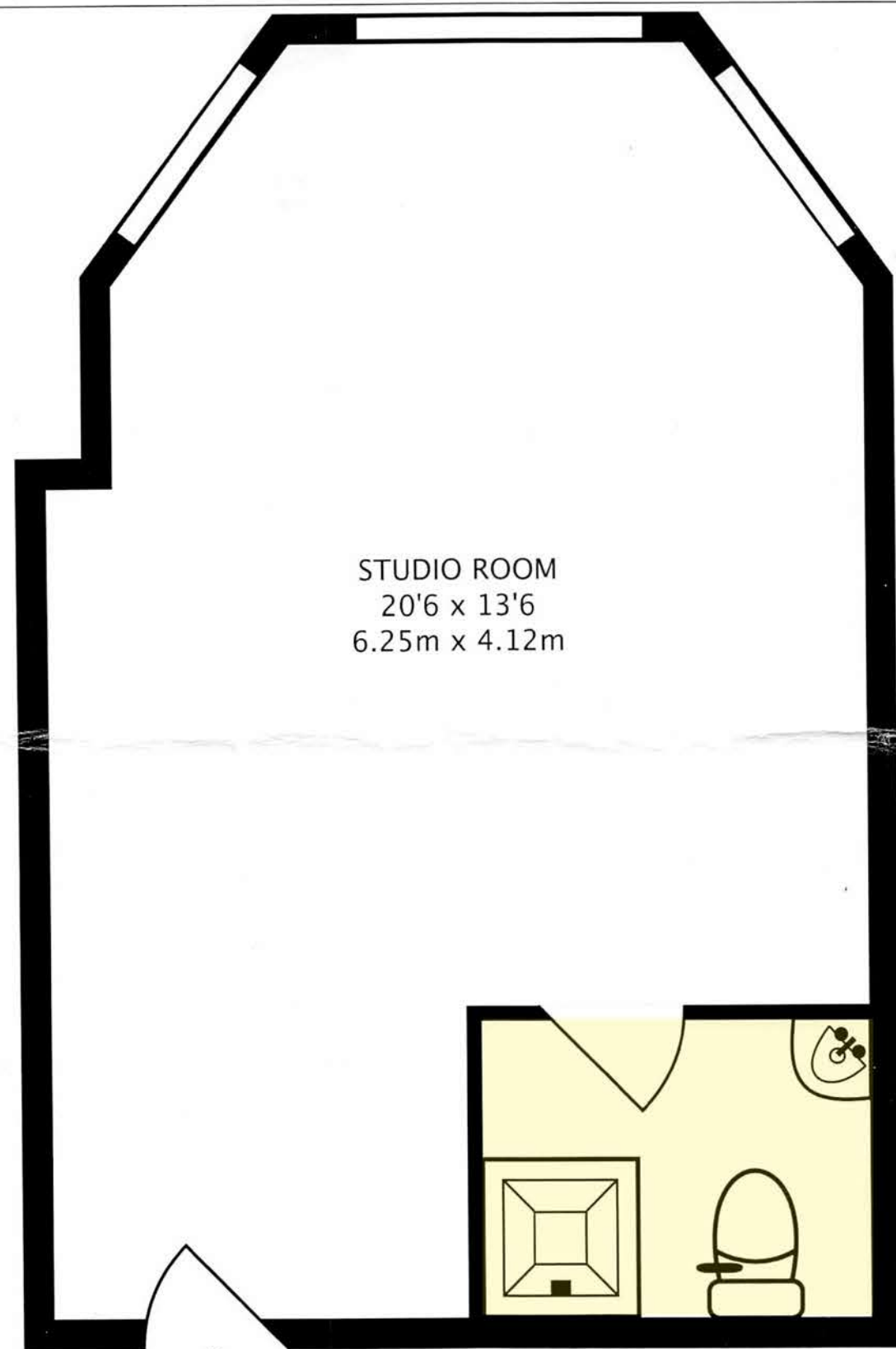
### Preliminary Details

This bright studio flat holds great potential for development and includes open-plan kitchen and separate shower room. Situated on the first floor of a classic period conversion the property is close to the amenities of Kilburn, Cricklewood and West Hampstead. Kilburn Underground Station (Jubilee Line) is close by for links throughout the city and West End.

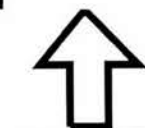


- Studio room • Open-plan kitchen • Shower room

Fordwych Road, West Hampstead, NW2



STUDIO ROOM  
20'6 x 13'6  
6.25m x 4.12m



FIRST FLOOR GROSS INTERNAL FLOOR AREA  
257 SQ FT/23.91 SQ M

Fordwych Road, West Hampstead, NW2

The property is entered at street level via a communal entrance hall and stairs to the first floor:

#### FIRST FLOOR

**Studio Room** 20'6x13'6

Front aspect sash windows, wiring for ceiling light

**Open-Plan Kitchen**

**Shower Room** 6'6x5'

White suite, shower cubicle, hand wash basin with chrome mixer tap over, WC, wiring for ceiling light

**Communal garden**

**Price:** £169,950 Subject to Contract  
**Tenure:** Leasehold  
**Local Authority:** Camden  
**Approx Floor Area:** 257 SQ FT / 23 SQ M