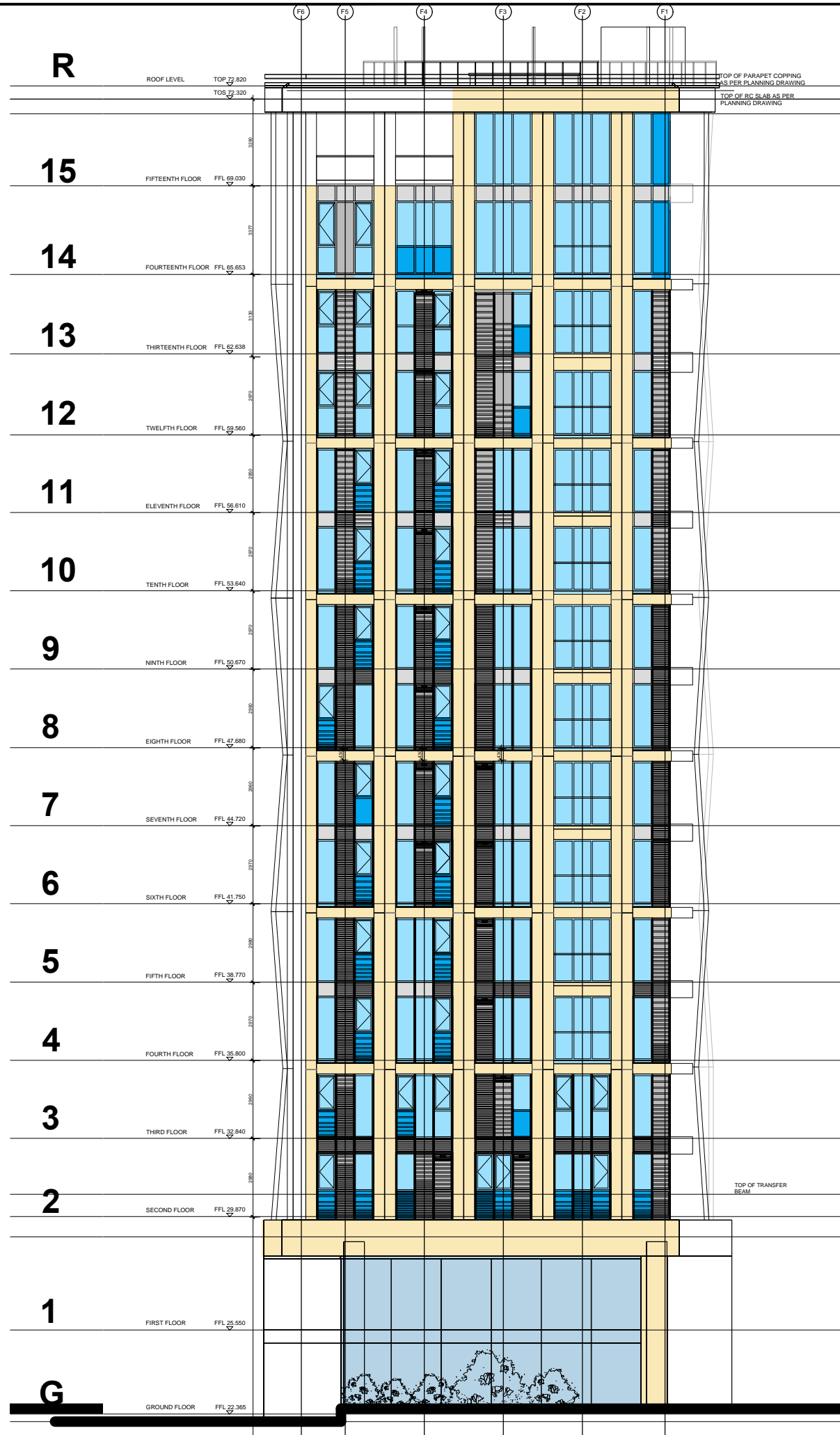





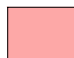
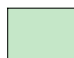



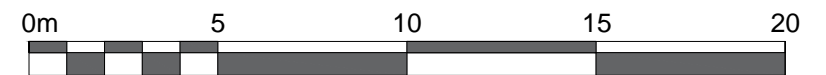
DO NOT SCALE OFF THIS DRAWING
 REPORT ALL ERRORS AND DISCREPANCIES
 TO THE ARCHITECT PROMPTLY.
 © Moxley Architects Ltd 2001.



KEY:

-  MAIN GRC INSULATED VERTICAL AND SPANDREL PANELS
-  INSULATED ALUMINIUM SPANDREL PANELS
-  INTERMEDIATE ALUMINIUM VERTICAL PANELS
-  DOUBLE GLAZED WINDOW UNITS
-  BACK PAINTED GLAZED PANELS
-  RENDERED BLOCKWORK WALL
-  GREEN WALL CONSTRUCTION
-  STRUCTURAL DOUBLE GLAZED WALL GROUND + FIRST FLOOR ONLY

NOTE: ELEVATIONS HAVE BEEN AMENDED TO CORRESPOND WITH THE LATEST PLANS



Client: BNP Paribas		
Job: PARKER TOWER 43-49 Parker St London WC2B 5PS		
Drawing Title: Proposed South East Elevation		
Issue Date: Nov 2016	Scale: Scale 1:200 @A3	Drawn:

MOXLEY ARCHITECTS LTD	
47 Clapham High St, London SW4 7TL Tel: 020-7720-8968 Fax: 020-7627-2533 info@moxley.co.uk	
Drwg No.:	768.1-4.006
File Ref.:	769 / Planning