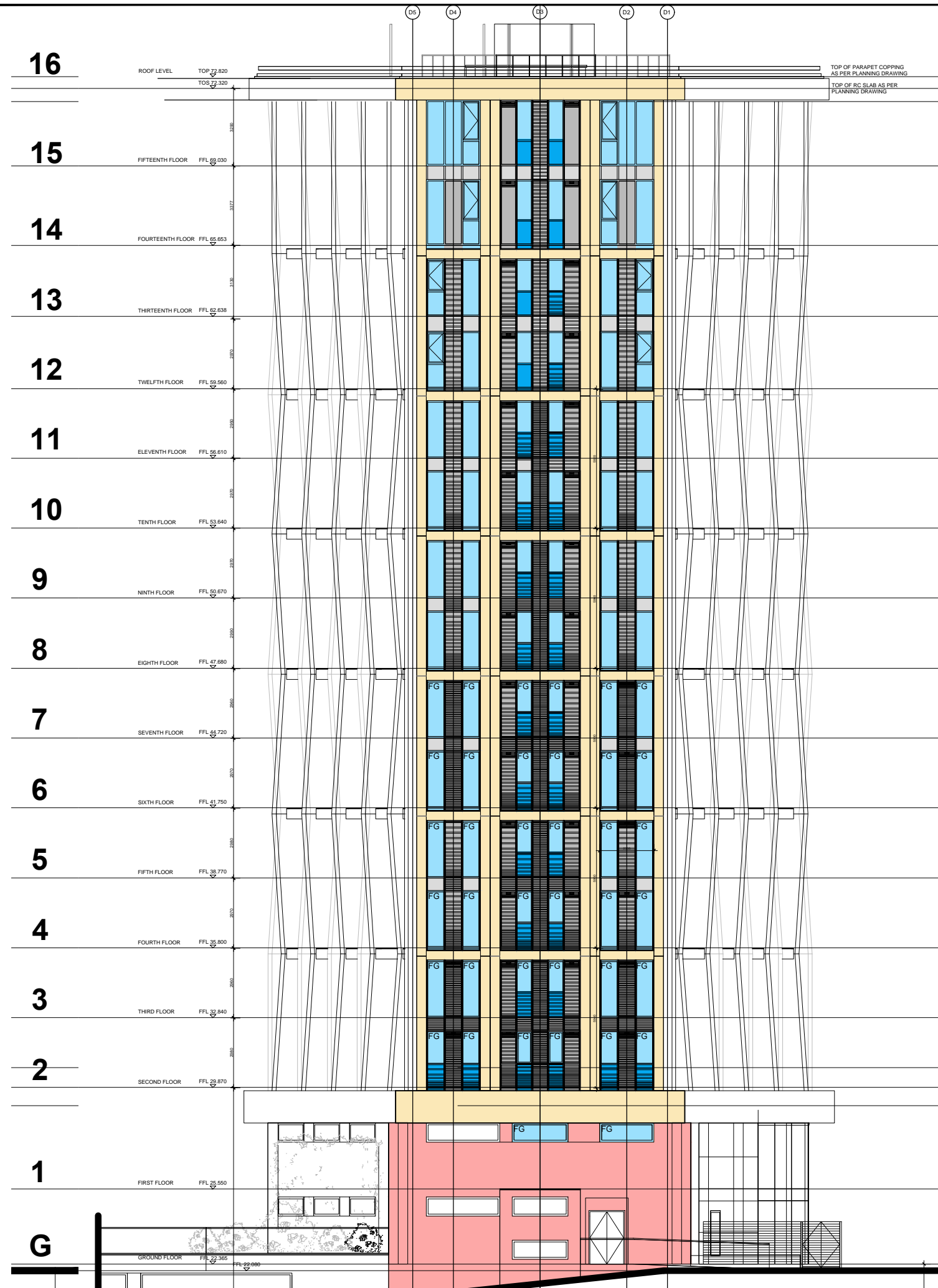
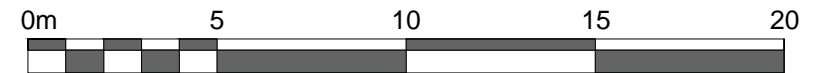


DO NOT SCALE OFF THIS DRAWING
 REPORT ALL ERRORS AND DISCREPANCIES
 TO THE ARCHITECT PROMPTLY.
 © Moxley Architects Ltd 2001.

KEY:

- MAIN GRC INSULATED VERTICAL AND SPANDREL PANELS
- INSULATED ALUMINIUM SPANDREL PANELS
- INTERMEDIATE ALUMINIUM VERTICAL PANELS
- DOUBLE GLAZED WINDOW UNITS
- BACK PAINTED GLAZED PANELS
- RENDERED BLOCKWORK WALL
- GREEN WALL CONSTRUCTION
- STRUCTURAL DOUBLE GLAZED WALL GROUND + FIRST FLOOR ONLY

NOTE: ELEVATIONS HAVE BEEN AMENDED TO CORRESPOND WITH THE LATEST PLANS



Client: BNP Paribas		
Job: PARKER TOWER 43-49 Parker St London WC2B 5PS		
Drawing Title: Proposed North Elevation		
Issue Date: Nov 2016	Scale: Scale 1:200 @A3	Drawn:

MOXLEY ARCHITECTS LTD	
47 Clapham High St, London SW4 7TL Tel: 020-7720-8968 Fax: 020-7627-2533 info@moxley.co.uk	
Drwg No.:	768.1-4.004
File Ref.:	769 / Planning