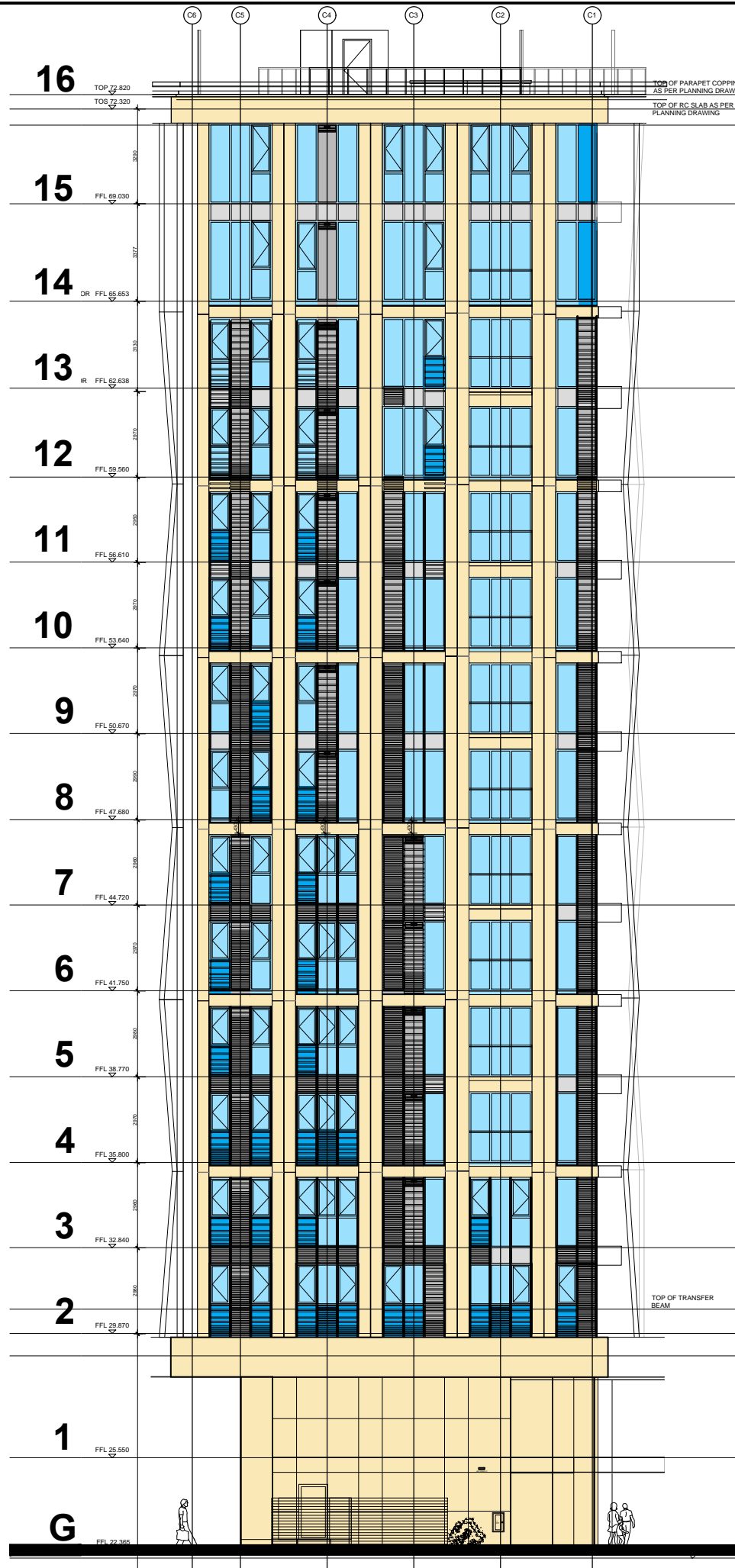


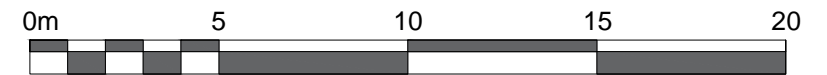
DO NOT SCALE OFF THIS DRAWING  
 REPORT ALL ERRORS AND DISCREPANCIES  
 TO THE ARCHITECT PROMPTLY.  
 © Moxley Architects Ltd 2001.



**KEY:**

- MAIN GRC INSULATED VERTICAL AND SPANDREL PANELS
- INSULATED ALUMINIUM SPANDREL PANELS
- INTERMEDIATE ALUMINIUM VERTICAL PANELS
- DOUBLE GLAZED WINDOW UNITS
- BACK PAINTED GLAZED PANELS
- RENDERED BLOCKWORK WALL
- GREEN WALL CONSTRUCTION
- STRUCTURAL DOUBLE GLAZED WALL GROUND + FIRST FLOOR ONLY

NOTE: ELEVATIONS HAVE BEEN AMENDED TO CORRESPOND WITH THE LATEST PLANS



Client: BNP Paribas		
Job: PARKER TOWER 43-49 Parker St London WC2B 5PS		
Drawing Title: Proposed North West Elevation		
Issue Date: Nov 2016	Scale: Scale 1:200 @A3	Drawn:

<b>MOXLEY ARCHITECTS LTD</b>	
47 Clapham High St, London SW4 7TL Tel: 020-7720-8968 Fax: 020-7627-2533 info@moxley.co.uk	
Drwg No.: <b>768.1-4.003</b>	
File Ref.: 769 / Planning	