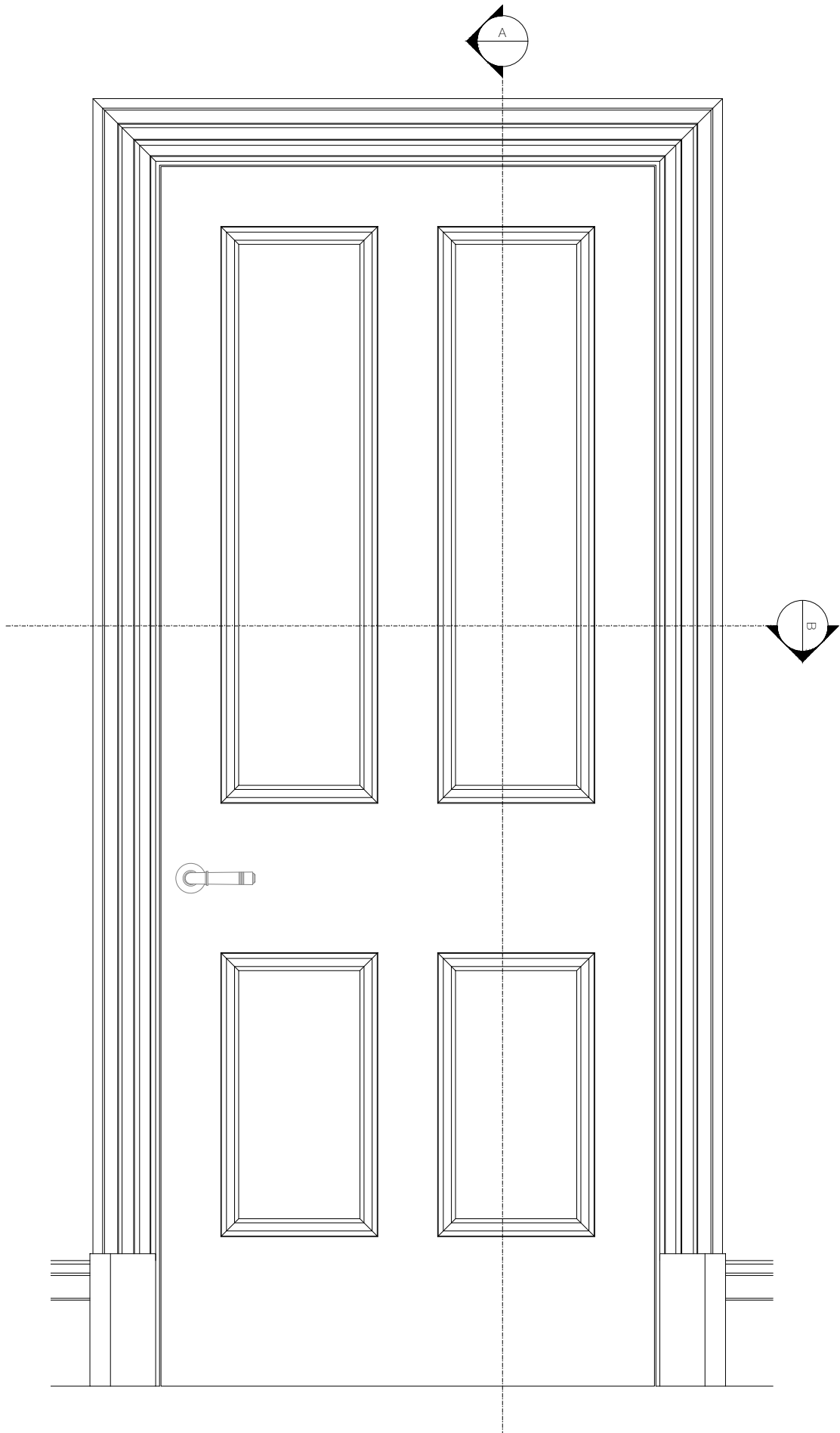
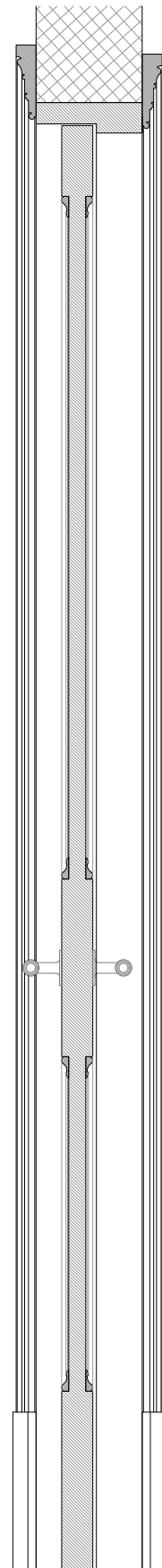


DISCLAIMER:
In accordance with our duties under the Misrepresentation Act 1967 and the Misdescription Act 1961, these details have been prepared in good faith but are not intended to constitute part of an offer of contract or create any contractual relationship. No description or information of any kind provided by CPC London or its Agents, whether written or verbal, contained in these Particulars or elsewhere ("Information") may be relied upon as a statement of representation, warranty or fact. Neither CPC London nor its Agents have any authority to make any representation or warranty and accordingly any information is given entirely without responsibility on the part of CPC London, its Agents or the seller. Any plans, photos, and computer generated images shown are indicative and cannot be guaranteed to represent the complete interiors/exterior of a scheme. Any Areas, measurements or distances given are approximate only. Any products and materials shown or indicated are indicative only and may be subject to variations or change. It is not possible to scale from these drawings. Any reference to alterations to or use of any part of the property is not a statement that any necessary planning, building regulations or other consent has been obtained. These matters must be verified by any buyer/lessee. Any buyer/lessee must satisfy himself by inspection or otherwise as to the correctness of any information given.
© All rights reserved to CPC London.

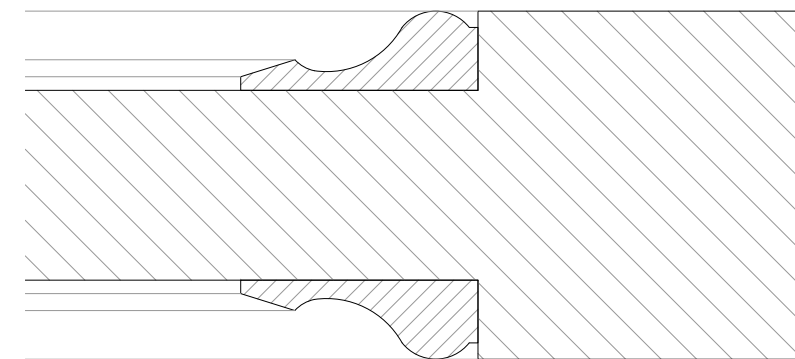
NOTES:



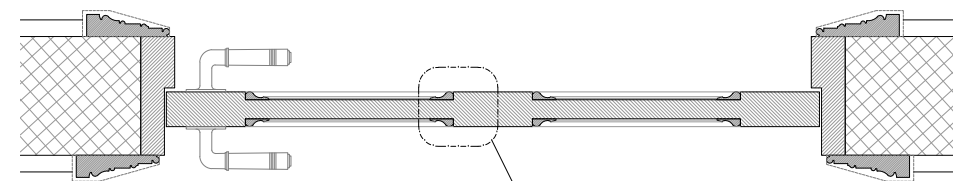
- Door Type A - Elevation
- 1:10@A3



- Door Type A - Section A
- 1:10@A3



C Door Type A - Moulding Detail C
1:1@A3



- Door Type A - Plan Section B
- 1:10@A3

REV	BY	DATE	DESCRIPTION

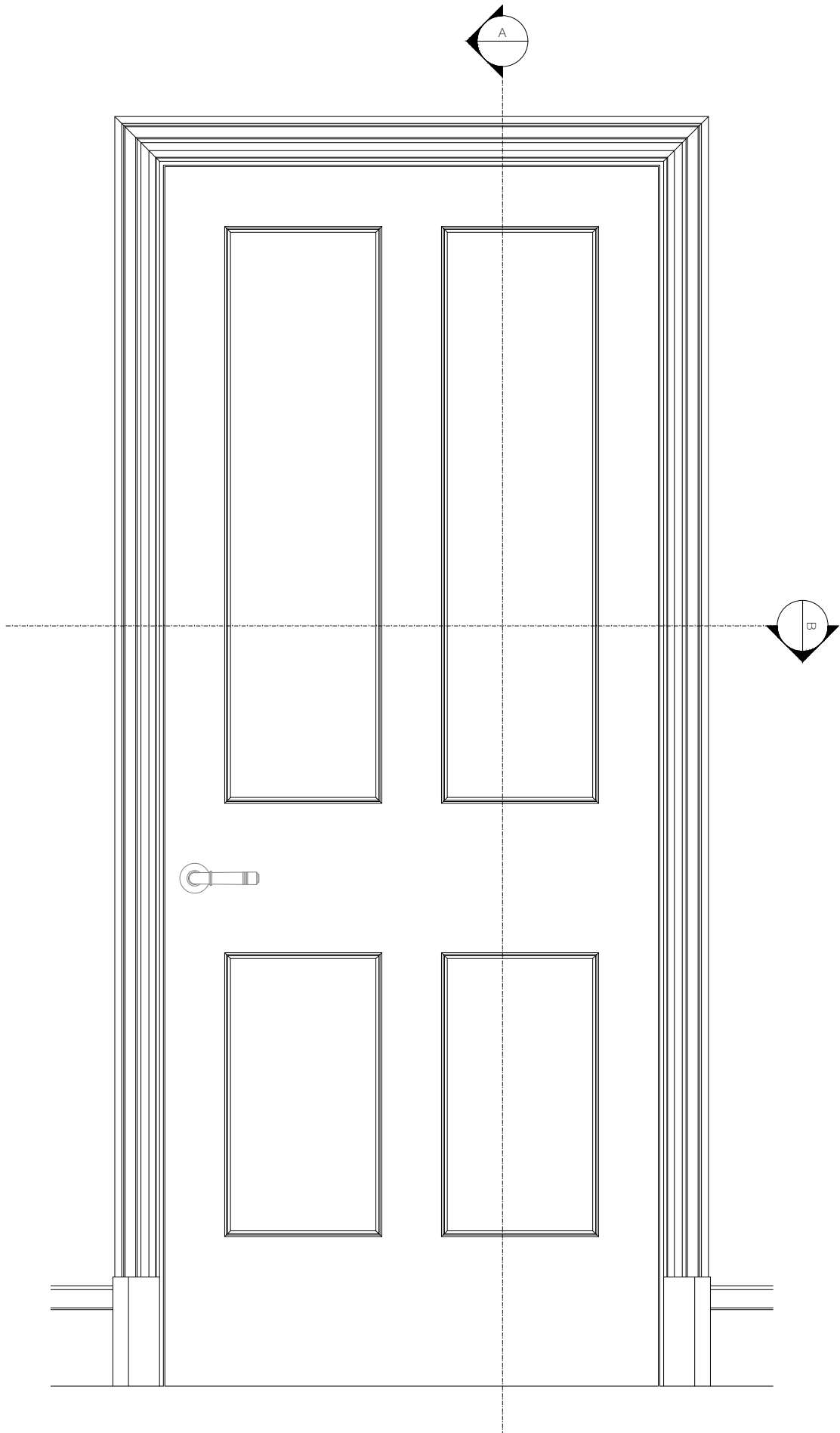
PROJECT CODE:
1 CG
PROJECT TITLE:
1 Chester Gate
Regents Park
London NW1

DRAWING TITLE:
Internal Door Type A

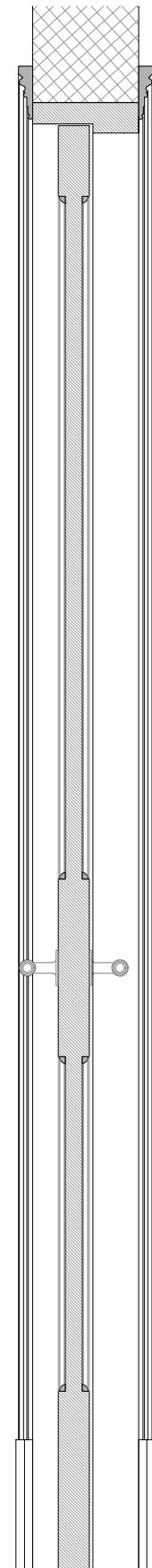
DRAWN BY: RM	CHECKED BY: RM
ISSUED FOR: Planning	
SCALE: 1:10 @ A3	DATE: 25.05.17
DRAWING NO: 500	REVISION: /

DISCLAIMER:
In accordance with our duties under the Misrepresentation Act 1967 and the Misdescription Act 1961, these details have been prepared in good faith but are not intended to constitute part of an offer of contract or create any contractual relationship. No description or information of any kind provided by CPC London or its Agents, whether written or verbal, contained in these Particulars or elsewhere ("Information") may be relied upon as a statement of representation, warranty or fact. Neither CPC London nor its Agents have any authority to make any representation or warranty and accordingly any information is given entirely without responsibility on the part of CPC London, its Agents or the seller. Any plans, photos, and computer generated images shown are indicative and cannot be guaranteed to represent the complete interiors/exterior of a scheme. Any Areas, measurements or distances given are approximate only. Any products and materials shown or indicated are indicative only and may be subject to variations or change. It is not possible to scale from these drawings. Any reference to alterations to or use of any part of the property is not a statement that any necessary planning, building regulations or other consent has been obtained. These matters must be verified by any buyer/lessee. Any buyer/lessee must satisfy himself by inspection or otherwise as to the correctness of any information given.
© All rights reserved to CPC London.

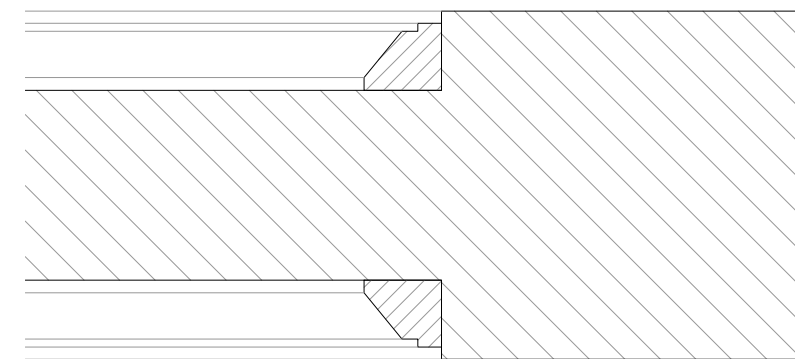
NOTES:



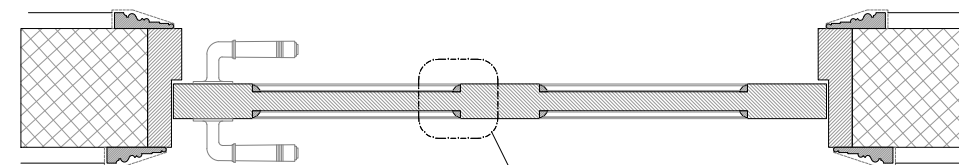
- Door Type B - Elevation
- 1:10@A3



- Door Type B - Section A
- 1:10@A3



D Door Type B - Moulding Detail D
1:1@A3



- Door Type B - Plan Section B
- 1:10@A3

REV	BY	DATE	DESCRIPTION

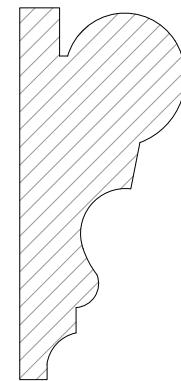
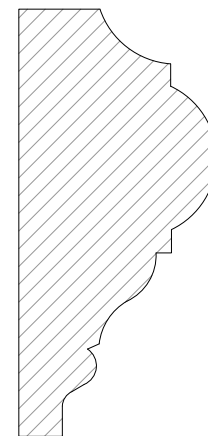
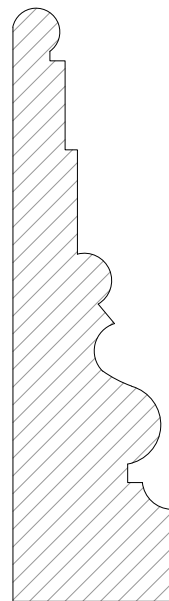
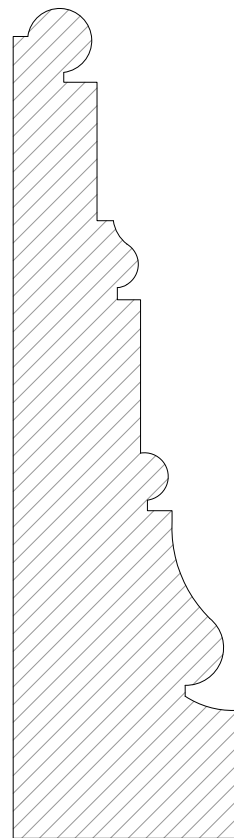
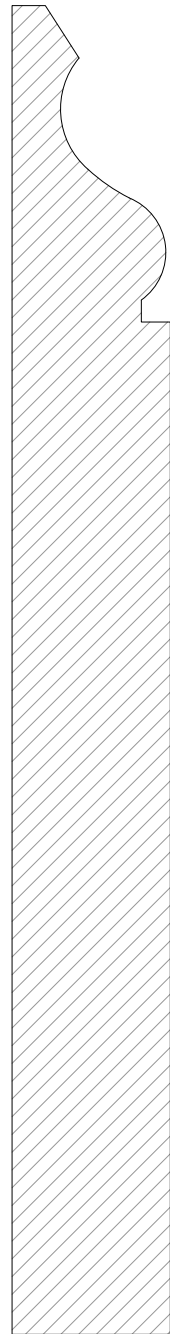
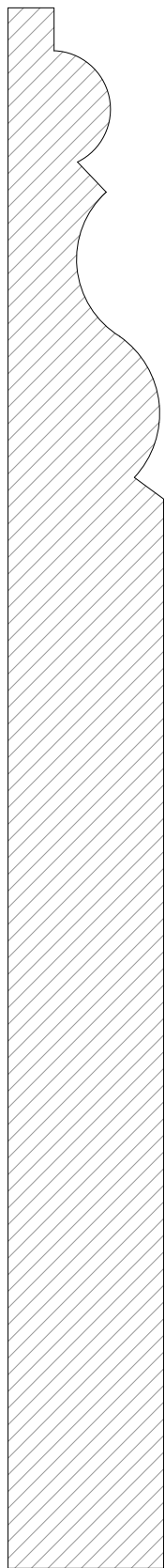
PROJECT CODE:
1 CG
PROJECT TITLE:
1 Chester Gate
Regents Park
London NW1

DRAWING TITLE:
Internal Door Type B

DRAWN BY: RM	CHECKED BY: RM
ISSUED FOR: Planning	
SCALE: 1:10 @ A3	DATE: 25.05.17
DRAWING NO: 501	REVISION: /

DISCLAIMER:
In accordance with our duties under the Misrepresentation Act 1967 and the Misdescription Act 1951, these details have been prepared in good faith but are not intended to constitute part of an offer of contract or create any contractual relationship. No description or information of any kind provided by CPC London or its Agents, whether written or verbal, contained in these Particulars or elsewhere ("Information") may be relied upon as a statement of representation, warranty or fact. Neither CPC London nor its Agents have any authority to make any representation or warranty and accordingly any Information is given entirely without responsibility on the part of CPC London, its Agents or the seller. Any plans, photos, and computer generated images shown are indicative and cannot be guaranteed to represent the complete interiors/exterior of a scheme. Any Areas, measurements or distances given are approximate only. Any products and materials shown or indicated are indicative only and may be subject to variations or change. It is not possible to scale from these drawings. Any reference to alterations to or use of any part of the property is not a statement that any necessary planning, building regulations or other consent has been obtained. These matters must be verified by any buyer/lessee. Any buyer/lessee must satisfy himself by inspection or otherwise as to the correctness of any Information given.
© All rights reserved to CPC London.

NOTES:



- Skirting Type A - Section
- 1:1@A3

- Skirting Type B - Section
- 1:1@A3

- Architrave Type A - Section
- 1:1@A3

- Architrave Type B - Section
- 1:1@A3

- Dado Rail - Section
- 1:1@A3

- Picture Rail - Section
- 1:1@A3

REV	BY	DATE	DESCRIPTION

PROJECT CODE:
1 CG
PROJECT TITLE:
1 Chester Gate
Regents Park
London NW1

DRAWING TITLE:
Architectural Mouldings

DRAWN BY:
RM

CHECKED BY:
RM

ISSUED FOR:
Planning

SCALE:
1:1 @ A3

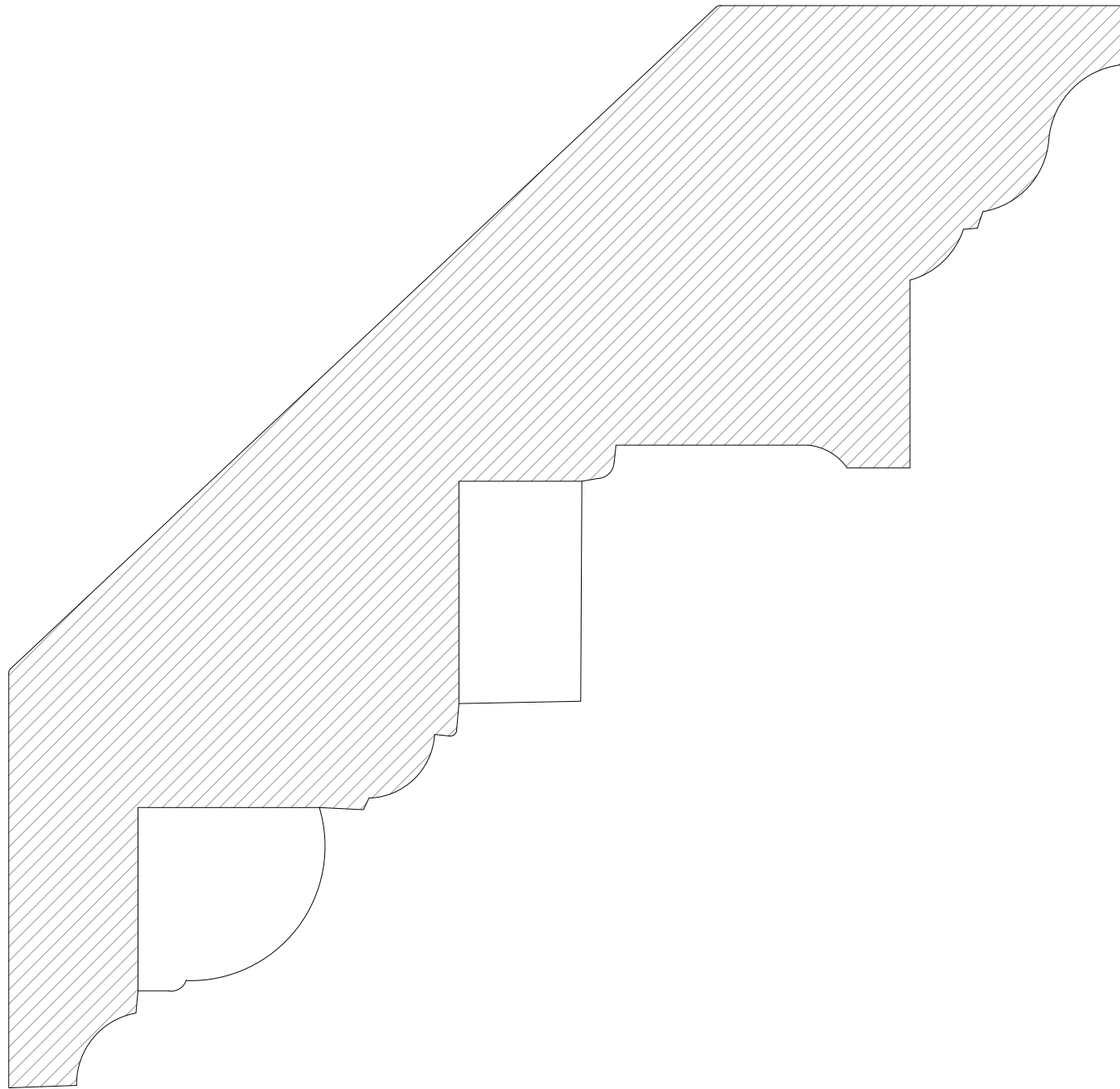
DATE:
25.05.17

DRAWING NO:
502

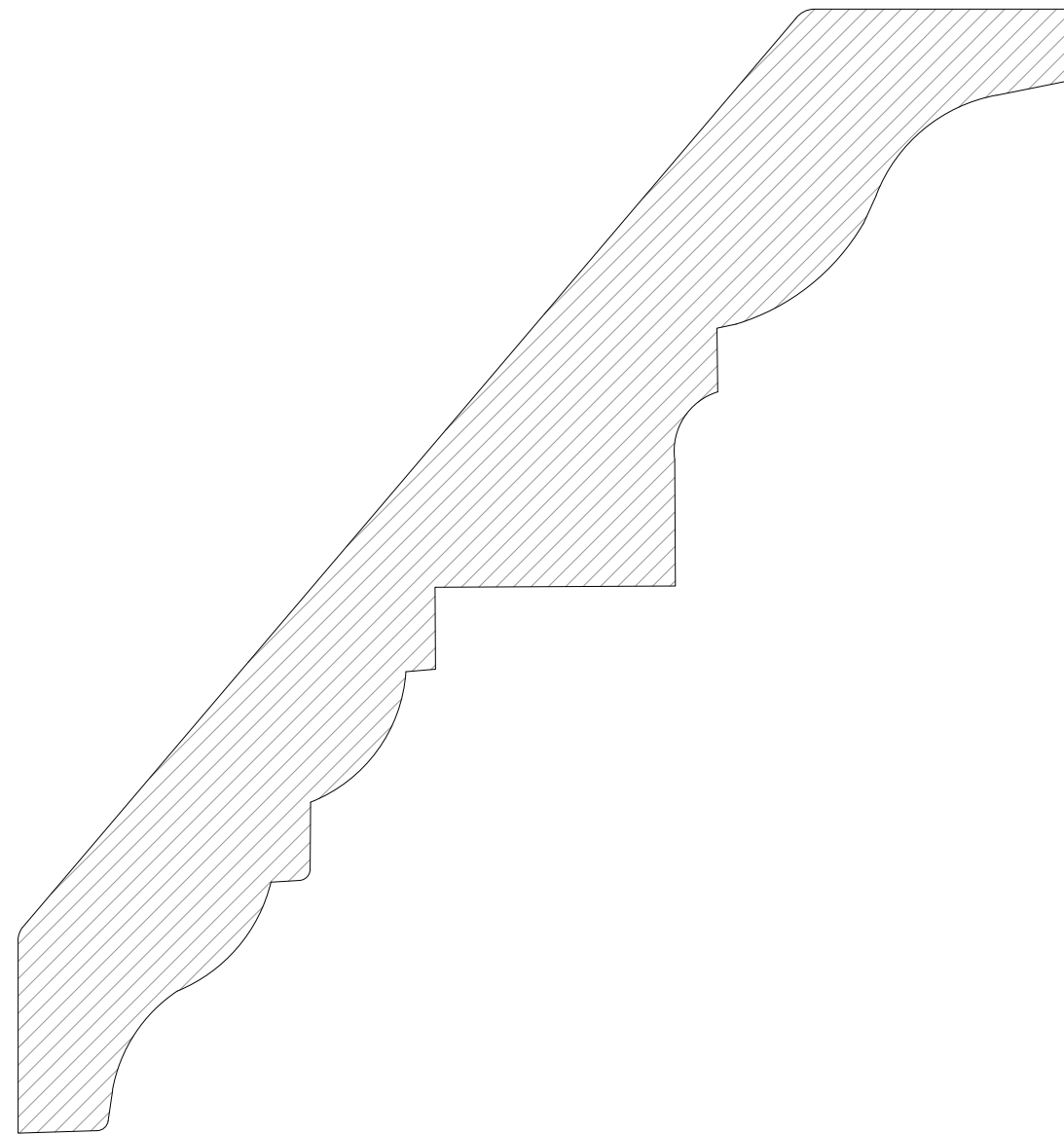
REVISION:
/

DISCLAIMER:
In accordance with our duties under the Misrepresentation Act 1967 and the Misdescription Act 1951, these details have been prepared in good faith but are not intended to constitute part of an offer of contract or create any contractual relationship. No description or information of any kind provided by CPC London or its Agents, whether written or verbal, contained in these Particulars or elsewhere ("Information") may be relied upon as a statement of representation, warranty or fact. Neither CPC London nor its Agents have any authority to make any representation or warranty and accordingly any Information is given entirely without responsibility on the part of CPC London, its Agents or the seller. Any plans, photos, and computer generated images shown are indicative and cannot be guaranteed to represent the complete interiors/exterior of a scheme. Any Areas, measurements or distances given are approximate only. Any products and materials shown or indicated are indicative only and may be subject to variations or change. It is not possible to scale from these drawings. Any reference to alterations to or use of any part of the property is not a statement that any necessary planning, building regulations or other consent has been obtained. These matters must be verified by any buyer/lessee. Any buyer/lessee must satisfy himself by inspection or otherwise as to the correctness of any Information given.
© All rights reserved to CPC London.

NOTES:



- Cornice Type A - Section
- 1:1@A3



- Cornice Type B - Section
- 1:1@A3

REV	BY	DATE	DESCRIPTION

PROJECT CODE:
1 CG
PROJECT TITLE:
1 Chester Gate
Regents Park
London NW1

DRAWING TITLE:
Cornice Types
A & B

DRAWN BY: RM CHECKED BY: RM

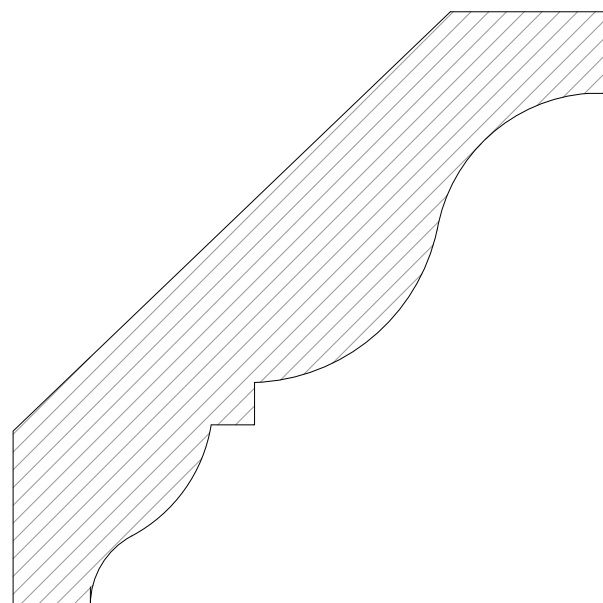
ISSUED FOR:
Planning

SCALE: 1:1 @ A3 DATE: 25.05.17

DRAWING NO: 503 REVISION: /

DISCLAIMER:
In accordance with our duties under the Misrepresentation Act 1967 and the Misdescription Act 1951, these details have been prepared in good faith but are not intended to constitute part of an offer of contract or create any contractual relationship. No description or information of any kind provided by CPC London or its Agents, whether written or verbal, contained in these Particulars or elsewhere ("information") may be relied upon as a statement of representation, warranty or fact. Neither CPC London nor its Agents have any authority to make any representation or warranty and accordingly any information is given entirely without responsibility on the part of CPC London, its Agents or the seller. Any plans, photos, and computer generated images shown are indicative and cannot be guaranteed to represent the complete interiors/exterior of a scheme. Any Areas, measurements or distances given are approximate only. Any products and materials shown or indicated are indicative only and may be subject to variations or change. It is not possible to scale from these drawings. Any reference to alterations to or use of any part of the property is not a statement that any necessary planning, building regulations or other consent has been obtained. These matters must be verified by any buyer/lessee. Any buyer/lessee must satisfy himself by inspection or otherwise as to the correctness of any information given.
© All rights reserved to CPC London.

NOTES:



- Cornice Type C - Section
- 1:1@A3

REV	BY	DATE	DESCRIPTION

PROJECT CODE:
1 CG
PROJECT TITLE:
1 Chester Gate
Regents Park
London NW1

DRAWING TITLE:
Cornice Type
C

DRAWN BY: RM	CHECKED BY: RM
ISSUED FOR: Planning	
SCALE: 1:1 @ A3	DATE: 25.05.17
DRAWING NO: 504	REVISION: /