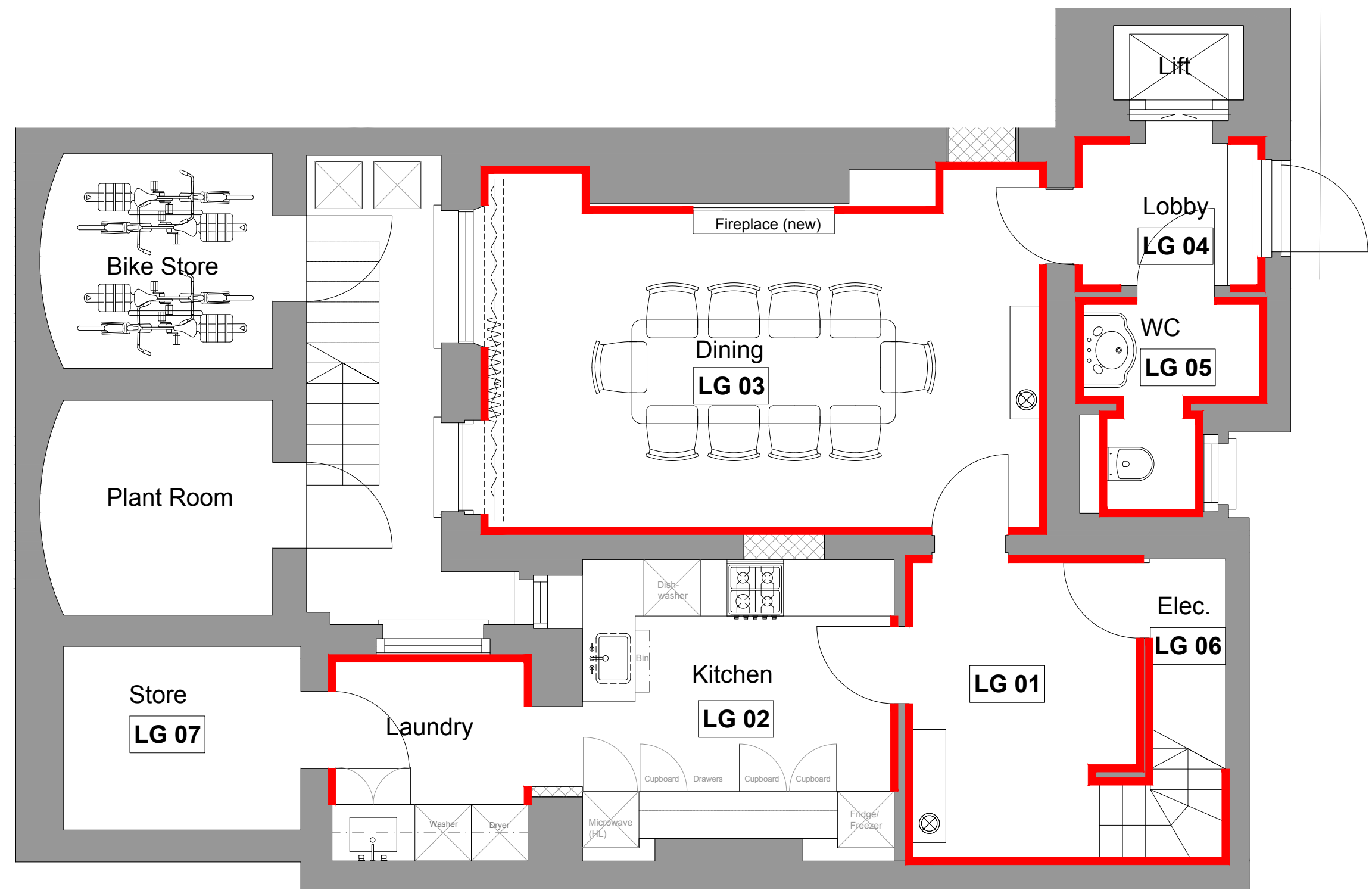


DISCLAIMER:
In accordance with our duties under the Misrepresentation Act 1967 and the Misdescription Act 1951, these details have been prepared in good faith but are not intended to constitute part of an offer of contract or create any contractual relationship. No description or information of any kind provided by CPC London or its Agents, whether written or verbal, contained in these Particulars or elsewhere ("Information") may be relied upon as a statement of representation, warranty or fact. Neither CPC London nor its Agents have any authority to make any representation or warranty and accordingly any information is given entirely without responsibility on the part of CPC London, its Agents or the seller. Any plans, photos, and computer generated images shown are indicative and cannot be guaranteed to represent the complete interiors/exterior of a scheme. Any Areas, measurements or distances given are approximate only. Any products and materials shown or indicated are indicative only and may be subject to variations or change. It is not possible to scale from these drawings. Any reference to alterations to or use of any part of the property is not a statement that any necessary planning, building regulations or other consent has been obtained. These matters must be verified by any buyer/lessee. Any buyer/lessee must satisfy himself by inspection or otherwise as to the correctness of any information given.
© All rights reserved to CPC London.

NOTES:
Skirting
Type A
Type B



1 Chester Gate - Skirting Plan
1:50

REV	BY	DATE	DESCRIPTION

PROJECT CODE:
1 CG
PROJECT TITLE:
1 Chester Gate
Regents Park
London NW1

DRAWING TITLE:
Lower Ground Floor
Skirting Location Plan

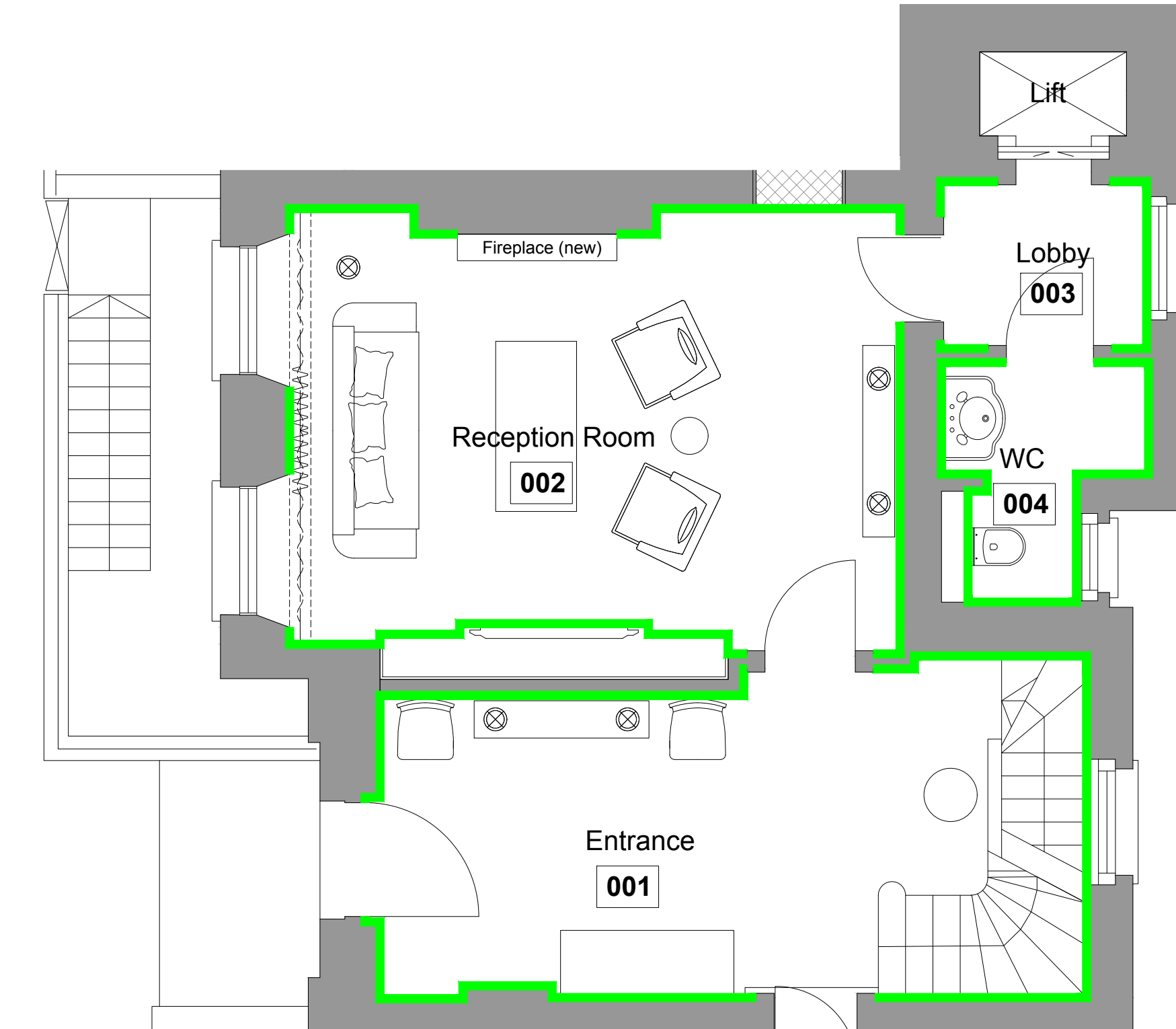
DRAWN BY: RM	CHECKED BY: RM
ISSUED FOR: Planning	
SCALE: 1:50 @A3	DATE: 25.05.17
DRAWING NO: 900LG	REVISION: /

DISCLAIMER:
In accordance with our duties under the Misrepresentation Act 1967 and the Misrepresentation Act 1991, these details have been prepared in good faith but are not intended to constitute part of an offer of contract or create any contractual relationship. No description or information of any kind provided by CPC London or its Agents, whether written or verbal, contained in these Particulars or elsewhere ("Information") may be relied upon as a statement of representation, warranty or fact. Neither CPC London nor its Agents have any authority to make any representation or warranty and accordingly any information is given entirely without responsibility on the part of CPC London, its Agents or the seller. Any plans, photos, and computer generated images shown are indicative and cannot be guaranteed to represent the complete interiors/outdoors of a scheme. Any Areas, measurements or distances given are approximate only. Any products and materials shown or indicated are indicative only and may be subject to variations or change. It is not possible to scale from these drawings. Any reference to alterations to or use of any part of the property is not a statement that any necessary planning, building regulations or other consent has been obtained. These matters must be verified by any buyer/lessee. Any buyer/lessee must satisfy himself by inspection or otherwise as to the correctness of any information given.
© All rights reserved to CPC London.

NOTES:

Skirting

- Type A
- Type B



1 Chester Gate - Skirting Plan
1:50

REV	BY	DATE	DESCRIPTION

PROJECT CODE:
1 CG
PROJECT TITLE:
1 Chester Gate
Regents Park
London NW1

DRAWING TITLE:
Ground Floor
Skirting Location Plan

DRAWN BY:
RM
CHECKED BY:
RM

ISSUED FOR:
Planning

SCALE:
1:50 @A3
DATE:
25.05.17

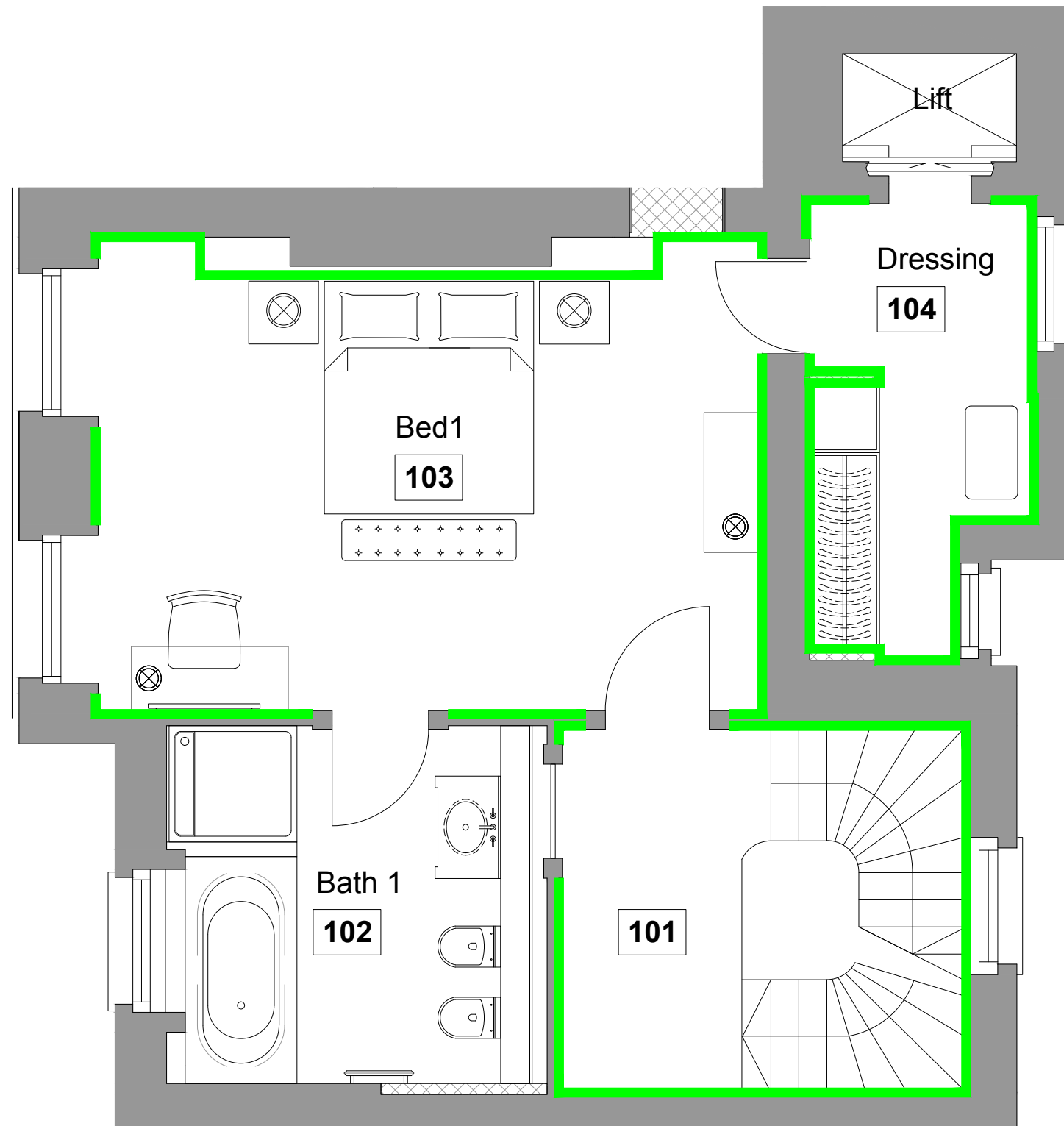
DRAWING NO:
900
REVISION:
/

DISCLAIMER:
In accordance with our duties under the Misrepresentation Act 1967 and the Misdescription Act 1961, these details have been prepared in good faith but are not intended to constitute part of an offer of contract or create any contractual relationship. No description or information of any kind provided by CPC London or its Agents, whether written or verbal, contained in these Particulars or elsewhere ("Information") may be relied upon as a statement of representation, warranty or fact. Neither CPC London nor its Agents have any authority to make any representation or warranty and accordingly any Information is given entirely without responsibility on the part of CPC London, its Agents or the seller. Any plans, photos, and computer generated images shown are indicative and cannot be guaranteed to represent the complete interiors/exterior of a scheme. Any Areas, measurements or distances given are approximate only. Any products and materials shown or indicated are indicative only and may be subject to variations or change. It is not possible to scale from these drawings. Any reference to alterations to or use of any part of the property is not a statement that any necessary planning, building regulations or other consent has been obtained. These matters must be verified by any buyer/lessee. Any buyer/lessee must satisfy himself by inspection or otherwise as to the correctness of any Information given.
© All rights reserved to CPC London.

NOTES:

Skirting

- Type A
- Type B



1 Chester Gate - Skirting Plan
1:50

REV	BY	DATE	DESCRIPTION

PROJECT CODE:
1 CG
PROJECT TITLE:
1 Chester Gate
Regents Park
London NW1

DRAWING TITLE:
First Floor
Skirting Location Plan

DRAWN BY:
RM
CHECKED BY:
RM

ISSUED FOR:
Planning

SCALE:
1:50 @A3
DATE:
25.05.17

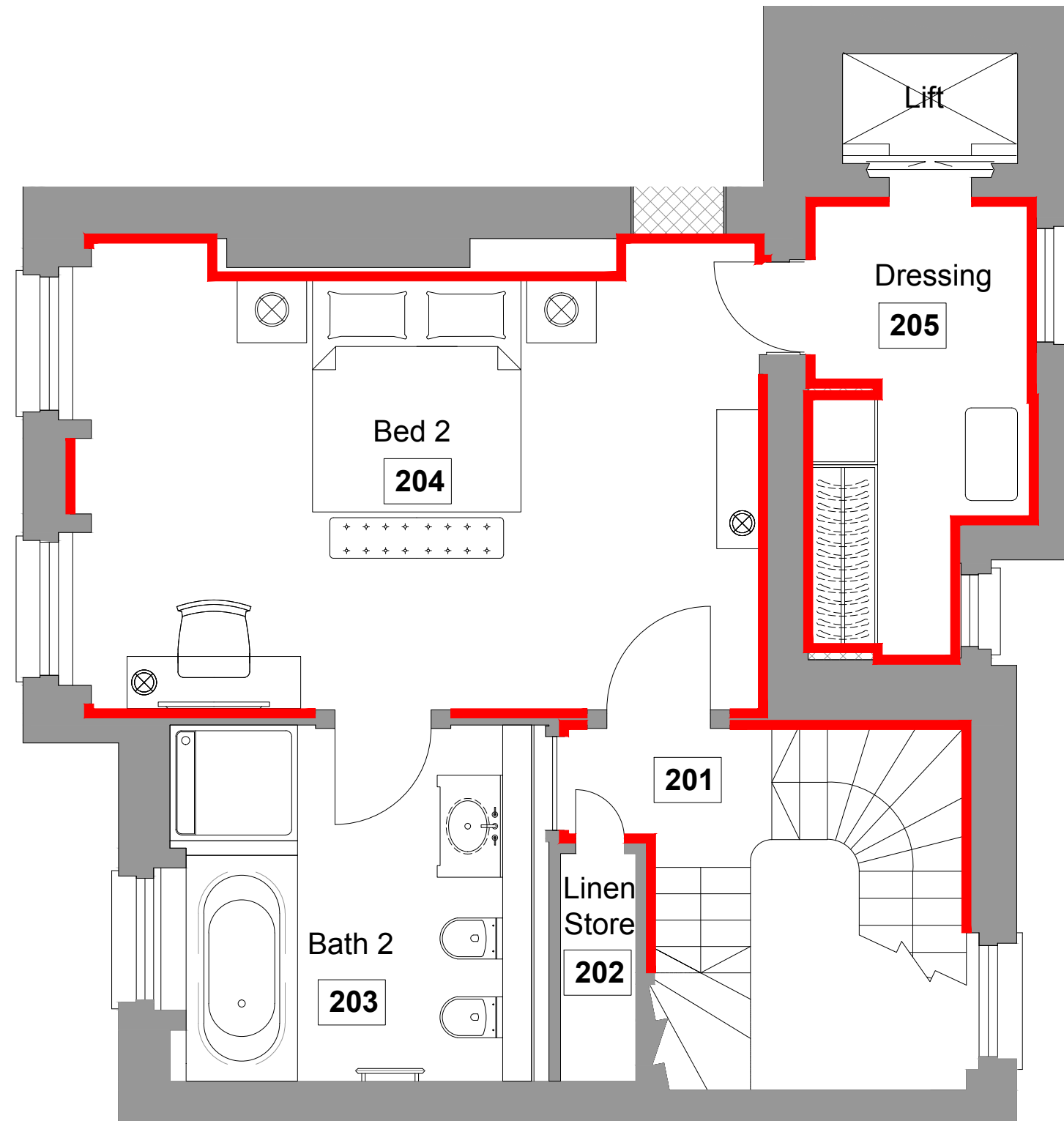
DRAWING NO:
901
REVISION:
/

DISCLAIMER:
In accordance with our duties under the Misrepresentation Act 1967 and the Misdescription Act 1961, these details have been prepared in good faith but are not intended to constitute part of an offer of contract or create any contractual relationship. No description or information of any kind provided by CPC London or its Agents, whether written or verbal, contained in these Particulars or elsewhere ("Information") may be relied upon as a statement of representation, warranty or fact. Neither CPC London nor its Agents have any authority to make any representation or warranty and accordingly any information is given entirely without responsibility on the part of CPC London, its Agents or the seller. Any plans, photos, and computer generated images shown are indicative and cannot be guaranteed to represent the complete interiors/exterior of a scheme. Any Areas, measurements or distances given are approximate only. Any products and materials shown or indicated are indicative only and may be subject to variations or change. It is not possible to scale from these drawings. Any reference to alterations to or use of any part of the property is not a statement that any necessary planning, building regulations or other consent has been obtained. These matters must be verified by any buyer/lessee. Any buyer/lessee must satisfy himself by inspection or otherwise as to the correctness of any information given.
© All rights reserved to CPC London.

NOTES:

Skirting

- Type A
- Type B



1 Chester Gate - Skirting Plan
1:50

REV	BY	DATE	DESCRIPTION

PROJECT CODE:
1 CG
PROJECT TITLE:
1 Chester Gate
Regents Park
London NW1

DRAWING TITLE:
Second Floor
Skirting Location Plan

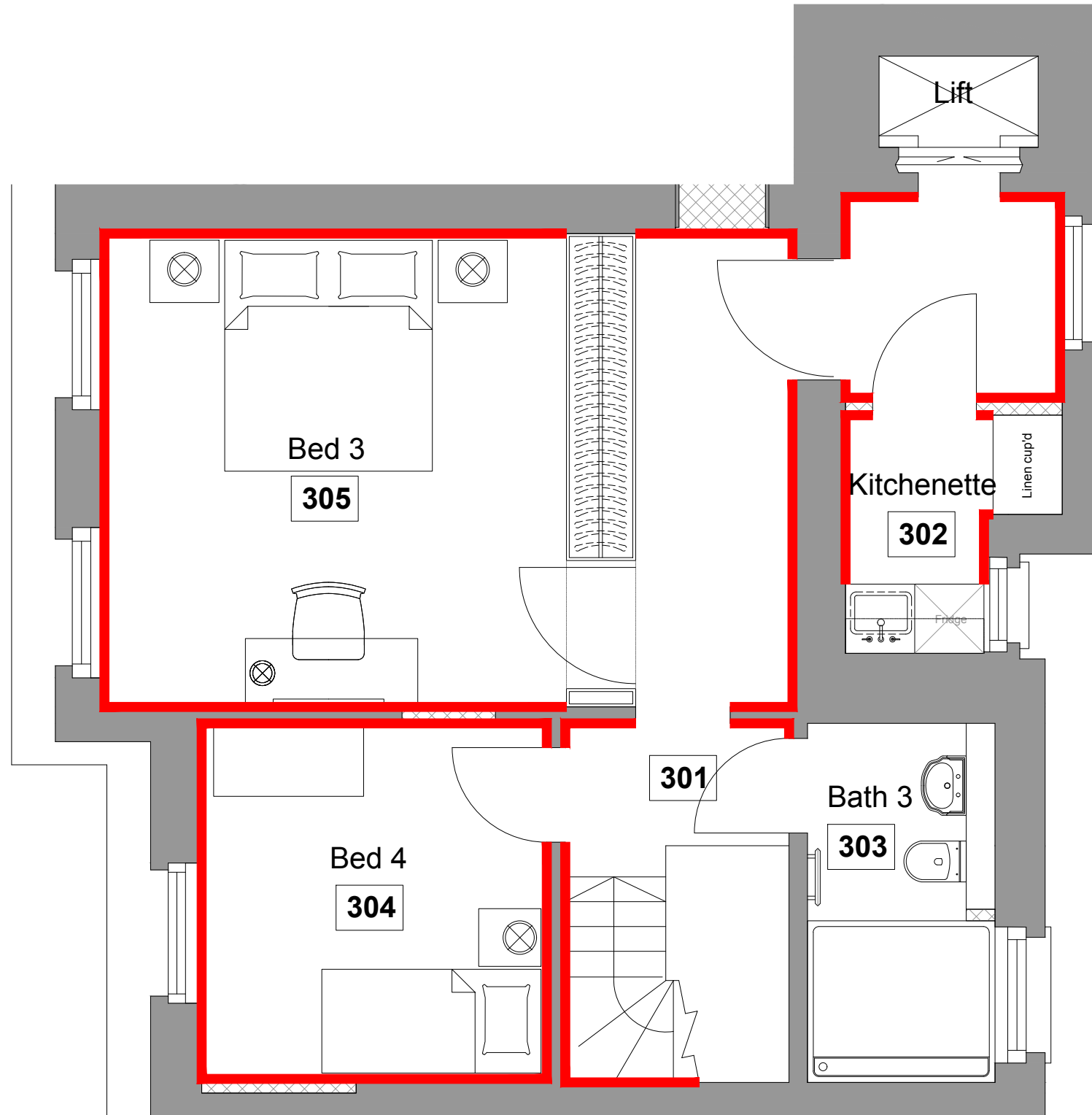
DRAWN BY: RM	CHECKED BY: RM
ISSUED FOR: Planning	
SCALE: 1:50 @A3	DATE: 25.05.17
DRAWING NO: 902	REVISION: /

DISCLAIMER:
In accordance with our duties under the Misrepresentation Act 1967 and the Misdescription Act 1951, these details have been prepared in good faith but are not intended to constitute part of an offer of contract or create any contractual relationship. No description or information of any kind provided by CPC London or its Agents, whether written or verbal, contained in these Particulars or elsewhere ("Information") may be relied upon as a statement of representation, warranty or fact. Neither CPC London nor its Agents have any authority to make any representation or warranty and accordingly any information is given entirely without responsibility on the part of CPC London, its Agents or the seller. Any plans, photos, and computer generated images shown are indicative and cannot be guaranteed to represent the complete interiors/exterior of a scheme. Any Areas, measurements or distances given are approximate only. Any products and materials shown or indicated are indicative only and may be subject to variations or change. It is not possible to scale from these drawings. Any reference to alterations to or use of any part of the property is not a statement that any necessary planning, building regulations or other consent has been obtained. These matters must be verified by any buyer/lessee. Any buyer/lessee must satisfy himself by inspection or otherwise as to the correctness of any information given.
© All rights reserved to CPC London.

NOTES:

Skirting

- Type A
- Type B



1 Chester Gate - Skirting Plan
1:50

REV	BY	DATE	DESCRIPTION

PROJECT CODE:
1 CG
PROJECT TITLE:
1 Chester Gate
Regents Park
London NW1

DRAWING TITLE:
Third Floor
Skirting Location Plan

DRAWN BY: RM	CHECKED BY: RM
ISSUED FOR: Planning	
SCALE: 1:50 @A3	DATE: 25.05.17
DRAWING NO: 903	REVISION: /