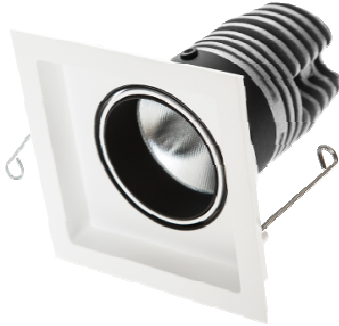


LUMINAIRE SPECIFICATION SHEETS

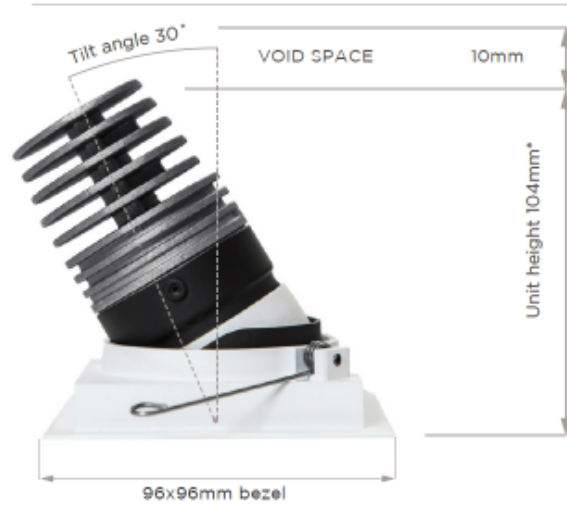
PROJECT: 100 New Oxford Street
LUMINAIR: L7 Option 2
E REF:

DOCUMENT NO: 5293-SP01 Rev A
ISSUE DATE: 07.07.16

ILLUSTRATION:



DIMENSIONS:



*Low void option available to give a unit height of 90mm.
81mm x 81mm cutout

LUMINAIRE DESCRIPTION/PURPOSE: Downlighters to canopy

LUMINAIRE ORDER CODE/FINISHES: Orluna, Detail Look Tilt&Rotate, ref: QUAD90-DLR-27-D-BEAM ANGLE-W-BB-44

Finish: Painted to match bronze canopy RAL number to be confirmed by March & White.

MANUFACTURER: Orluna LED Technologies Limited
ADDRESS: Unit 37
The Wenta Business Centre
Watford WD24 7ND
CONTACT: Andrew Kilborn
TEL: +44
1923
6937
39

SUPPLIER:

CUTOUT SIZE: 81x81mm **RECESS DEPTH:** 114mm **MOUNTING:** Recessed

LAMP TYPE: LED 2700K **WATTS:** 11.4W **VOLTS:** **CAP:** **BEAM:** 30°
CRI 95

LAMP MANUFACTURER: Cree **ORDER CODE:** Integral to fixture

Continues Overleaf