

We believe in planting. Straight up.

The Landscape Architect

Experts in living wall design, installation and maintenance



Bespoke
Living Walls

Many living wall suppliers tend to focus on their systems. Here at The Landscape Architect we believe a living wall should be a thing of verdant beauty, not a study in engineering. That's why it's the plants that are our starting point, and our finishing point. Our system has been designed around the plants. It gives us maximum planting flexibility and delivers optimum plant health. It allows our walls to develop and change over time. It enables us to tailor every wall we design to both the location and the client. Most

importantly it lets us create unique planting plans using a diverse range of colour, texture, shape and size. During the last ten years we have worked with garden designers, architects and developers up and down the country installing living walls of all shapes and sizes. Over the following pages you will see a small selection of these. We think the results speak for themselves.

www.thelandscapearchitect.net

E.mail: info@thelandscapearchitect.net



Bespoke
Living Walls

The Landscape Architect
Experts in living wall design, installation and maintenance



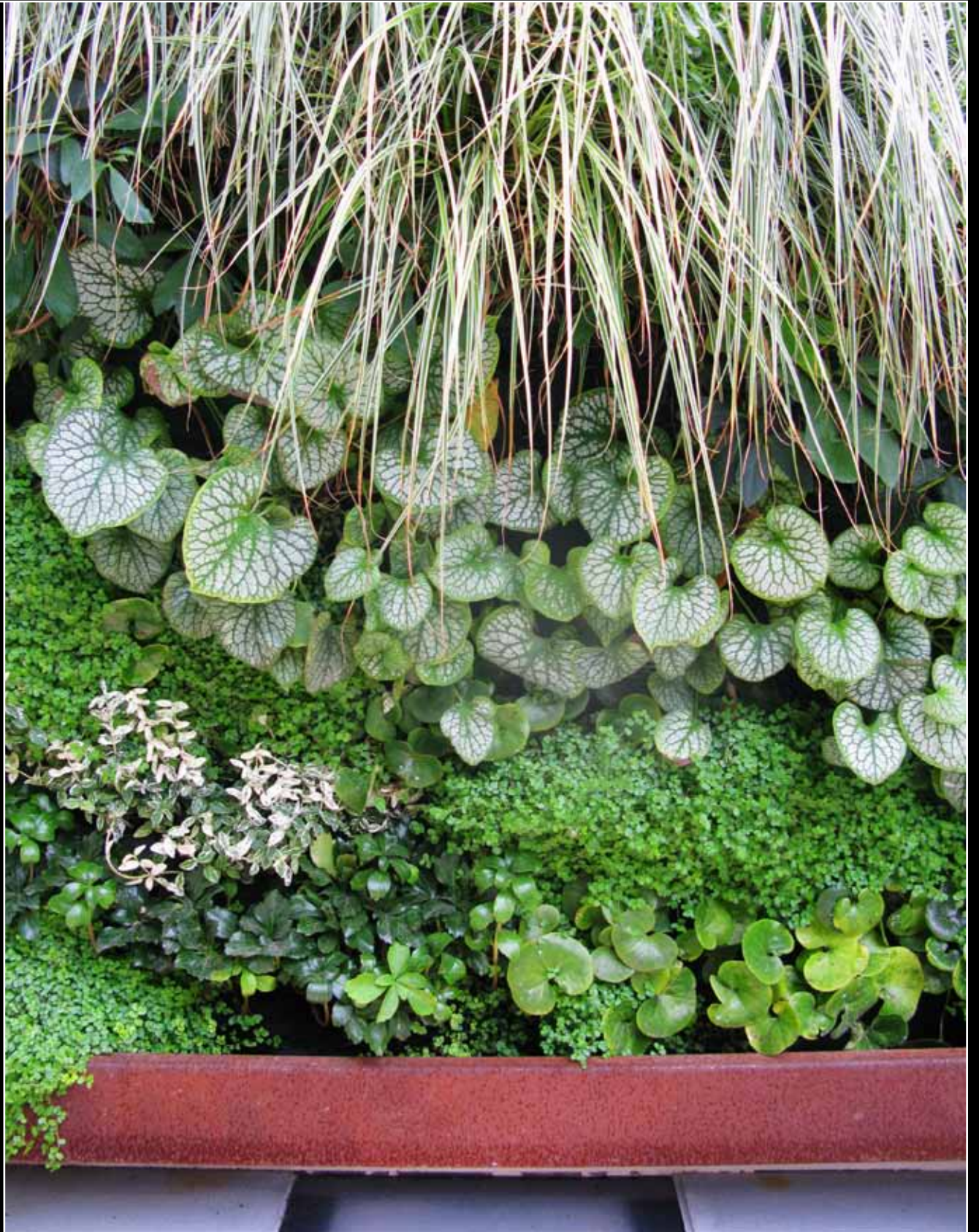
Bespoke
Living Walls

This project completed back in 2009 is one of our older walls and is developing beautifully. The exposed rooftop location in London's East End is both sunny and windy, requiring the careful selection of suitable hardy plants. These include Fatsia, Liriope, Pachysandra, Phormium, Soleirolia and Vinca.



Bespoke
Living Walls

The Landscape Architect
Experts in living wall design, installation and maintenance



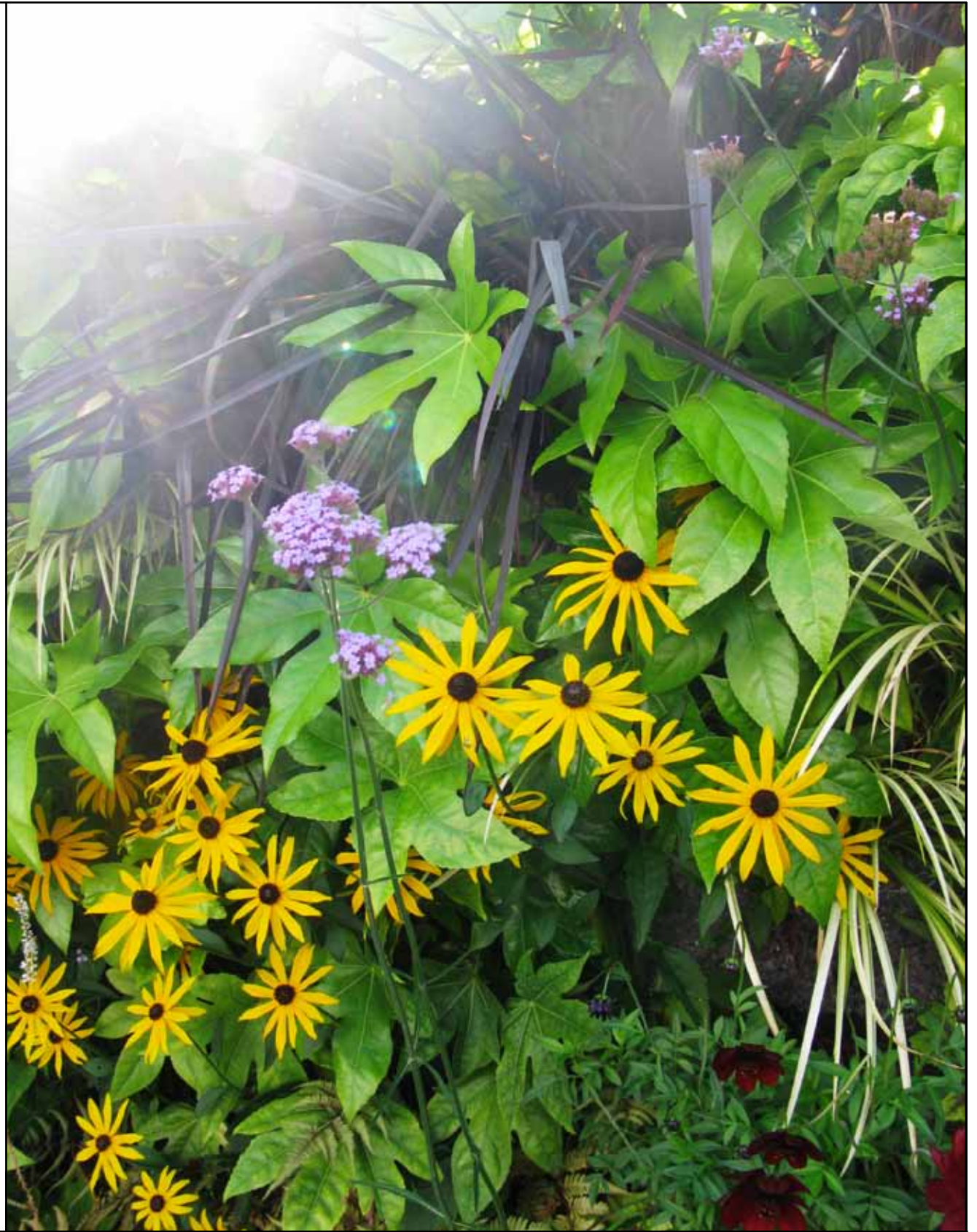
Bespoke
Living Walls

In this example we installed a corten picture frame around the living wall. This really emphasises the 'planting as art' element of living walls. The frame also includes an integrated drip tray, allowing waste water to be taken away discretely and saving the client thousands of pounds of complicated drainage work.



Bespoke
Living Walls

The Landscape Architect
Experts in living wall design, installation and maintenance



Bespoke
Living Walls

Lots of living walls tend to be predominantly or entirely planted with hardy evergreens. At The Landscape Architect we think colour is essential and always include perennials to provide seasonal interest and bursts of vibrancy. In this example purple *Verbena bonariensis* and the vibrant yellow *Rudbeckia fulgida* var. *sullivantii* 'Goldsturm' contrast beautifully with the broad glossy leaves of *Fatsia japonica* and the strappy black leaves of *Phormium tenax* Purpureum.

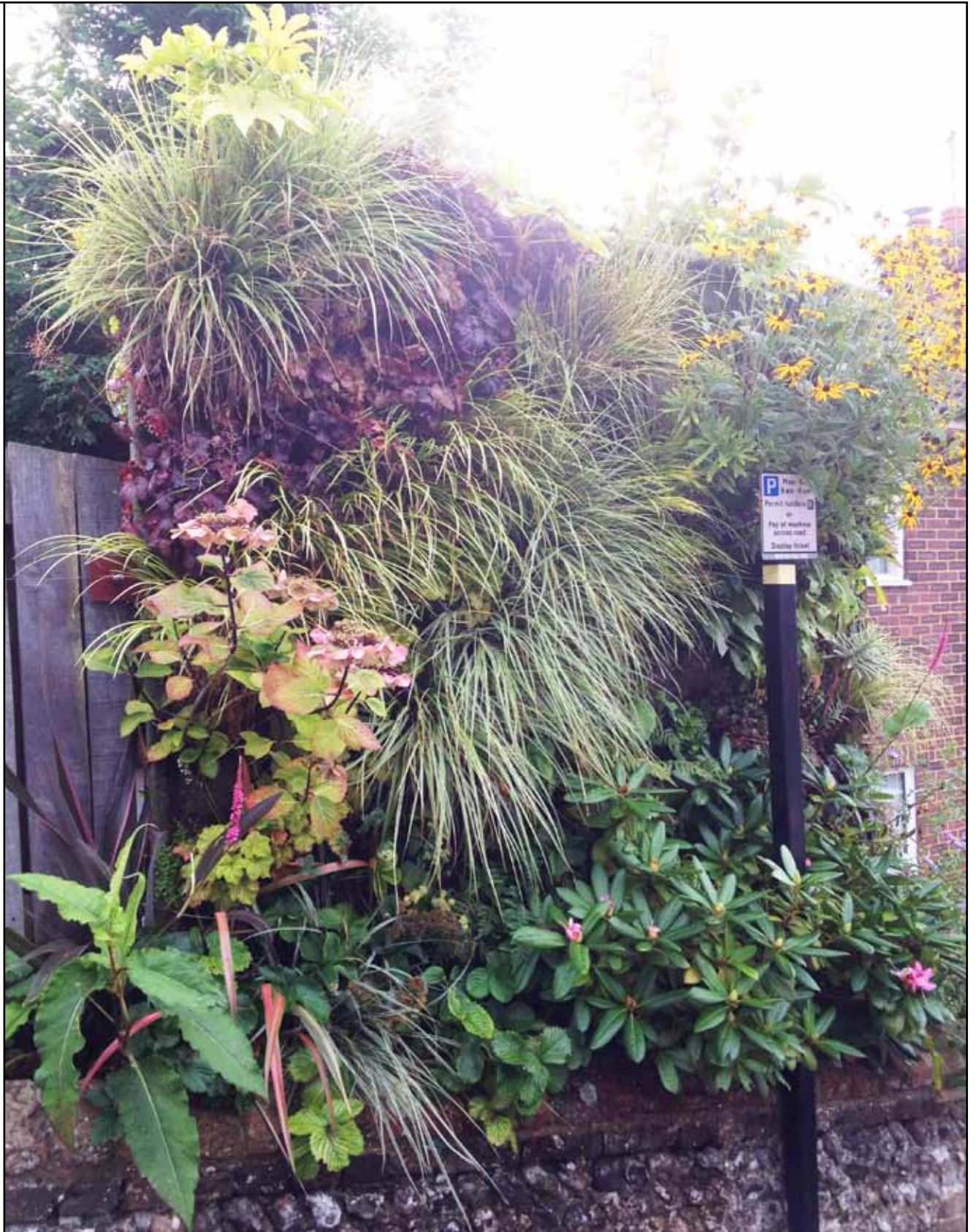


P Mon
8 am - 6 p
Permit holders **B**
or
Pay at machine
across road
Display ticket
B/5151/3/L156



Bespoke
Living Walls

The Landscape Architect
Experts in living wall design, installation and maintenance



Bespoke
Living Walls

In this garden on the south coast of England we decided to give something back to the local community and planted the reverse side of our clients living wall so that it could be enjoyed by passers by on the street. To the bottom right you can see a rhododendron just coming into bloom. Not a typical living wall plant but certainly a stunning inclusion for spring. This is another example of the importance of colour and the careful selection of plants. *Phormium tenax* Sundowner, *Hydrangea macrophylla* Zorro and *Rudbeckia fulgida* var. *sullivantii* 'Goldsturm' sit alongside *Carex oshimensis* 'Evergold' and *Heuchera* 'Plum Pudding'.

The Landscape Architect
Experts in living wall design, installation and maintenance



Bespoke
Living Walls

Here again we see the importance of colour and the careful selection of plants. The large leaves of *Tetrapanax papyrifera* Rex and the strappy blades of *Carex lurida* provide a rich green background to the vivid purples of *Geranium rozanne* and *Verbena bonariensis* 'Lollipop'. This wall also includes wild strawberries (*Fragaria vesca*).

The Landscape Architect
Experts in living wall design, installation and maintenance



Bespoke
Living Walls

This living wall forms the boundary to a roof terrace at a prime London address, preserving precious floor area for furniture and providing the client with a stunning view from their bedrooms. As you zoom in on the wall you can see further examples of our approach to vibrant and atypical planting. Strong backbone plants such as *Fatsia japonica*, *acorus gramineus* and *Bergenia cordifolia* perfectly set off the striking *Fuchsia magellanica* and the delicate daisy like flowers of the *Erigeron karvinskianus*.

The Landscape Architect
Experts in living wall design, installation and maintenance



Bespoke
Living Walls

Many people assume a living wall can only be used to green up an existing facade. In this example in London's Belsize Park we installed a free-standing living wall that is also double-sided. In this wall *Soleirolia soleirolii* was used to great effect, wrapping around the top and end of the wall to further emphasise the dual face. The following page shows an image of the reverse side of the living wall. Taken around 12 months after the wall was initially planted, you can see the success of the planting and just what a stunning result can be achieved with the right system and planting palette.



Bespoke
Living Walls



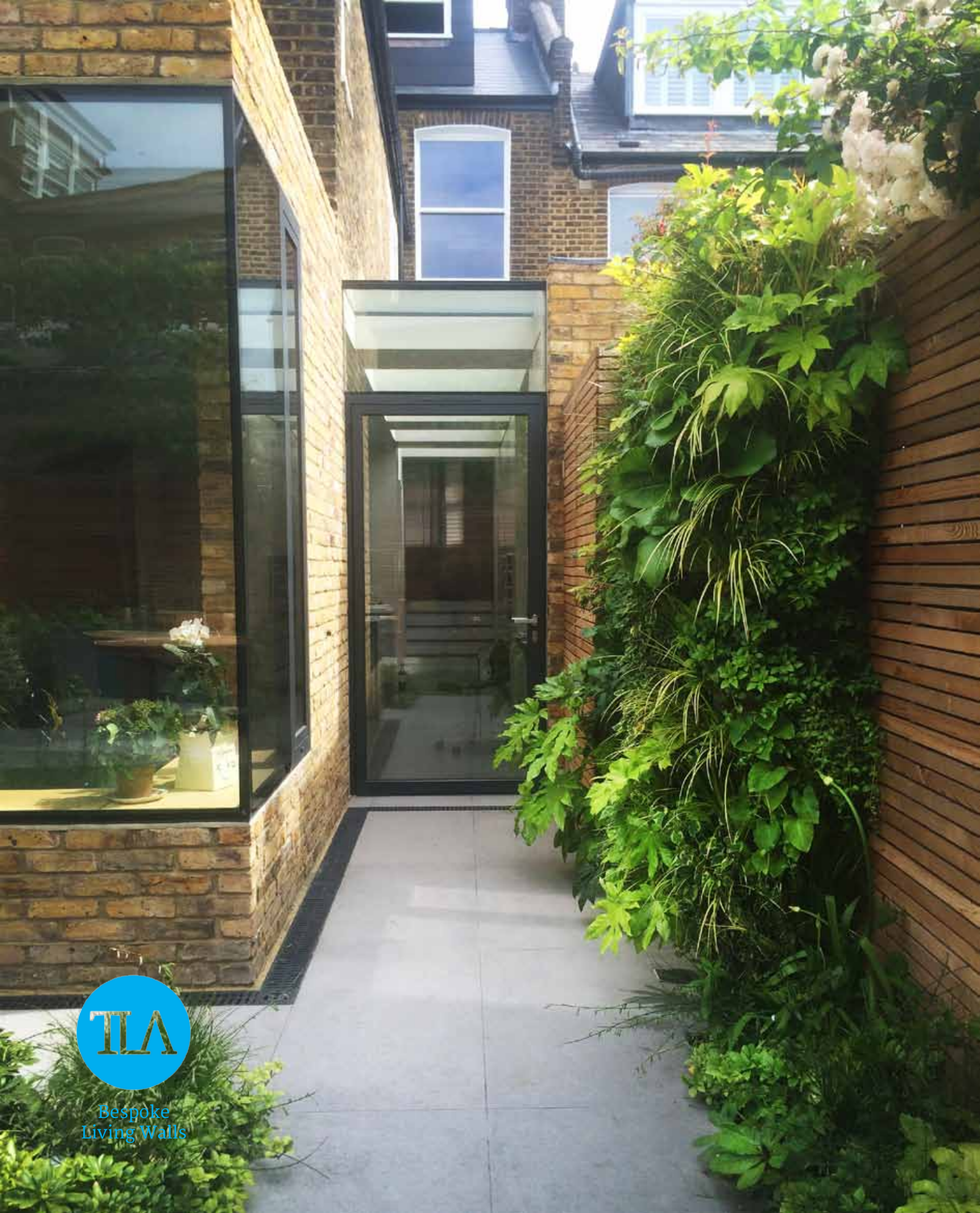
Bespoke
Living Walls

The Landscape Architect
Experts in living wall design, installation and maintenance



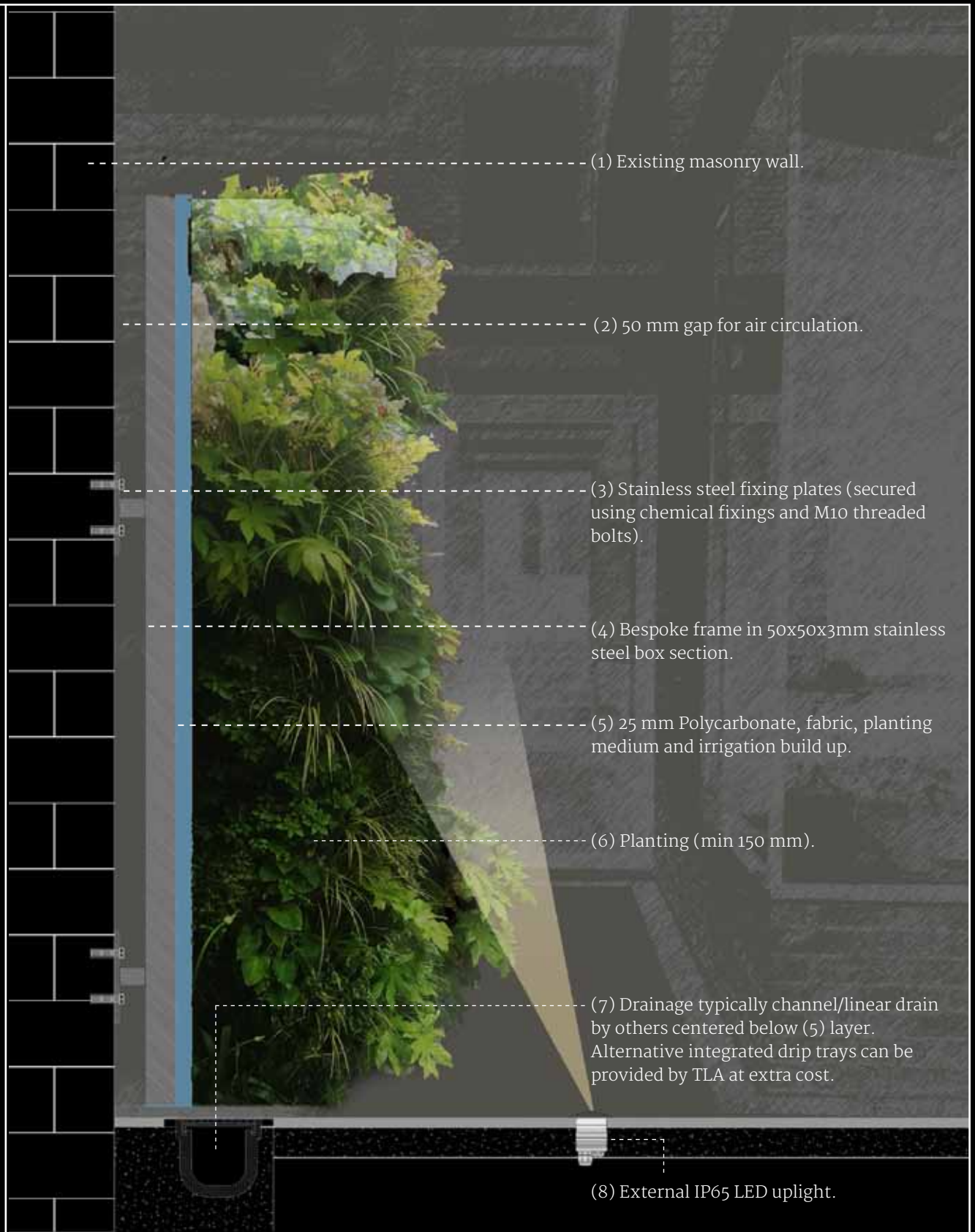
Bespoke
Living Walls

In this scheme in Knightsbridge a pair of living walls frame the entrance to a courtyard garden. With over 30m² of living walls we tripled the amount of planting in the garden, helping to create a true urban oasis and providing stunning outlooks from the key reception rooms.



Bespoke
Living Walls

The Landscape Architect
 Experts in living wall design, installation and maintenance



Bespoke
 Living Walls

Ours is a soilless system in which the plants are rooted into a porous, mold-free, geo-textile material allowing for root migration throughout the wall. Plants are not constricted to a small square box. Our system gives us the versatility to plant the wall with an extensive variety of plants, creating a composition that has rhythm and flow. Many boxes on the market are filled with soil, coir or peat, which must be replaced as the substrate decomposes and plants become root-bound and nutrient deficient. Our geo-textile medium allows for even water and nutrient distribution and complete control over all aspects of growth.



Bespoke
Living Walls

The Landscape Architect
Experts in living wall design, installation and maintenance



Lucca External LED uplight



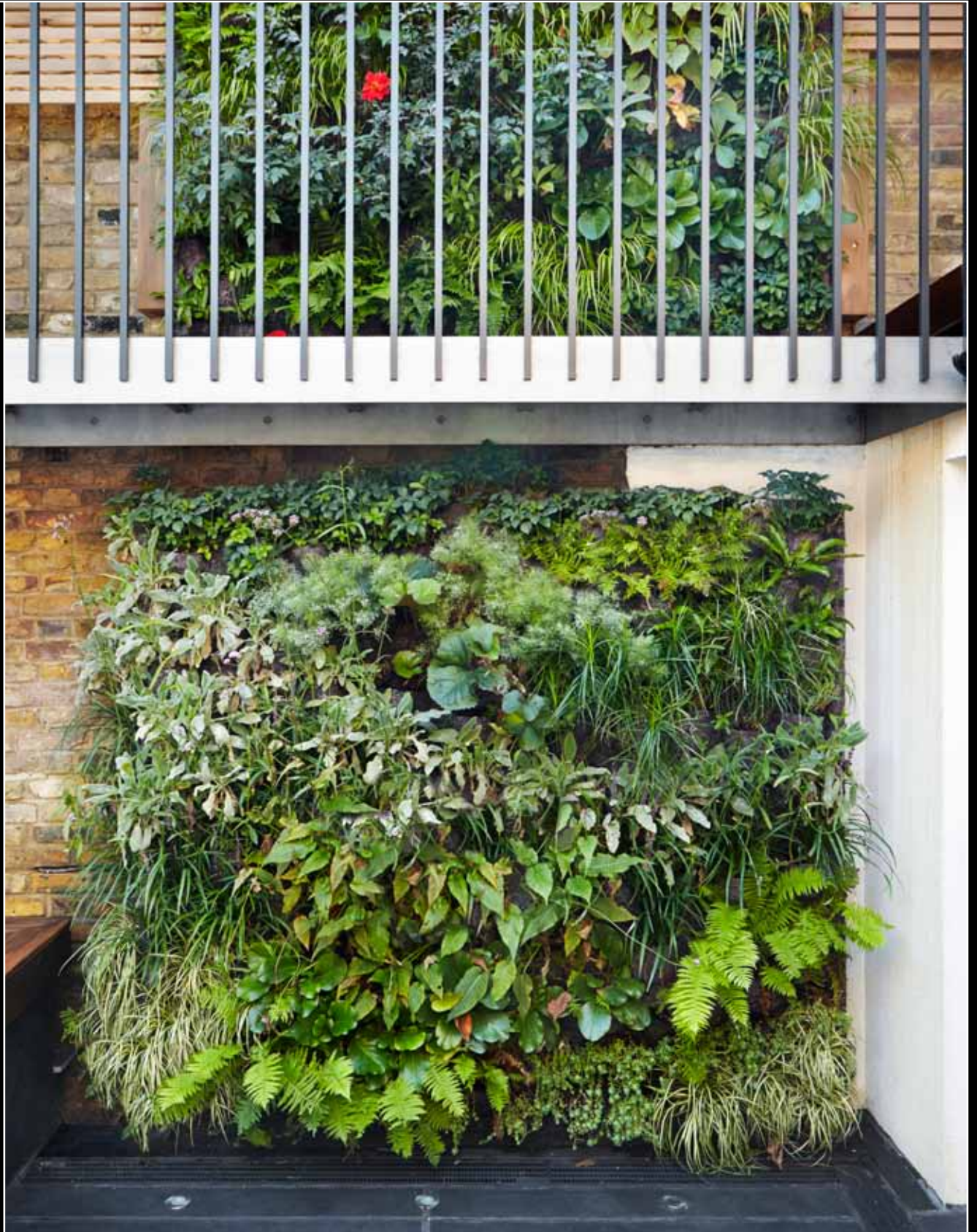
Khono LED Array



Bespoke
Living Walls

The addition of carefully considered lighting allows living walls to be enjoyed at night. In these two examples you can see in-ground uplighters and overhead spotlights. Both achieve stunning results. We can install the lighting for our living walls or work with your own contractors to specify fittings and positioning.

The Landscape Architect
Experts in living wall design, installation and maintenance



Bespoke
Living Walls

In this scheme in Islington, a double-height living wall acts as an immediate attention grabber, being visible from the living room at first floor level and the kitchen diner at ground floor level. This brings dramatic planting as close to the house as possible while not blocking access in any way.

What are living walls and why do we love them?

Sometimes called green walls or vertical gardens, a living wall is a wall that is partially or completely covered with vegetation. They can be either free-standing or attached to an existing masonry wall. Although the concept stems back to the Gardens of Babylon, our love of living walls was inspired by Patrick Blanc, who installed one at the Museum of Science and Industry, Paris in 1998.

How long does a living wall last?

The growing medium in which the plants are rooted will never decompose or have to be replaced, unlike soil based systems. The frame is stainless steel so it will not corrode. The plants do of course need some love, care and attention!

Is a living wall environmentally friendly?

As well as the obvious aesthetic benefits, living walls offer multiple environmental benefits across areas like noise pollution, air quality, urban heat and biodiversity.

Do you install everything for your living walls?

We can install everything from the drainage to the lighting to the living wall itself. We are also happy to work with other contractors. So for example, if you are undertaking wider works we can specify the lights and leave them to your electrician to install. The one thing we insist on is that we do the planting!

Who plants our living walls?

Our team is comprised of professional horticulturists who carefully handle plants to minimize transplant shock and maximize acclimatisation. Adam leads the team on every installation.

What maintenance does a living wall require?

To keep a wall thriving into the future we advise clients to put an appropriate maintenance plan in place. Like any garden, the growth habit of the plants, size of the garden and the client's expectations dictate the exact maintenance requirement. Our living walls systems can be set up for complete automation where the plants will thrive on just a quarterly maintenance regime. If you'd prefer a more manicured look, we could look at a monthly maintenance package where we can take care of all aspects of growth and aesthetics, keeping the wall looking immaculate throughout the year.

How much does a living wall cost?

Whilst our bespoke system is not quite as cheap as some of the modular systems on the market, it gives us full flexibility on the size of installation. More importantly, it enables us to plant the wall with far more dynamic and naturalistic schemes leading to a less 'blocky' end product. It also ensures that we can more fully respond to our client's requirements and preferences. Prices vary depending on site specifics and typically our living walls cost in the region of £1000 per square meter.

Can I use a living wall instead of a fence as a boundary?

Yes you can! Whilst the standard approach is to attach a living wall to an existing masonry wall our system can be installed freestanding in front of a fence or instead of one. We have even installed double-sided living walls using this approach.

How do you light your living walls?

Most clients opt for in-ground lights within the paving or decking beneath the living wall. Uplighting like this delivers impressive results but where it is not possible we can install spotlights above the wall.

Where does the irrigation and feed system go and how much space does it take up?

The irrigation system we use includes a feed tank and various bits and bobs. Typically this kit takes up a bit less space than a dishwasher but as every one of our installations is bespoke we can develop a plan that minimizes the impact on your usable space. In the past we have hidden our kit behind the green wall itself, in planting beds, in seating areas, and in all manner of other places. The kit does not even have to be anywhere near to the living wall, just as long as we can run a pipe between it and the wall.

What drainage does a living wall require?

The irrigation system is designed to keep the green wall constantly moist, which means that drainage is important. In most instances a channel drain is installed in the paving beneath the living wall to carry away excess water. Alternatively we can install an integrated drip tray that sits above any paving and takes the wastewater away to an agreed point. Drip trays are a great option for retrofit living walls and when installing above doorways.



Bespoke
 Living Walls

For more information and to see more examples of our work...

www.thelandscapearchitect.net
 E.mail info@thelandscapearchitect.net
 Adam Shepherd on 07875 203901
 Will Keast-Butler on 07775 524645

Picture credits: Page 2, 12, 13 - Howard Sooley / Page 20 - James Ross

We believe in planting. Straight up.

The Landscape Architect

Experts in living wall design, installation and maintenance



**Bespoke
Living Walls**

