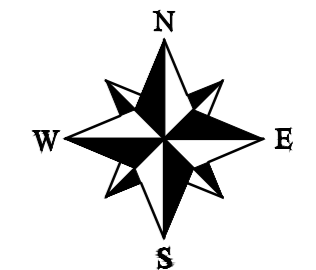
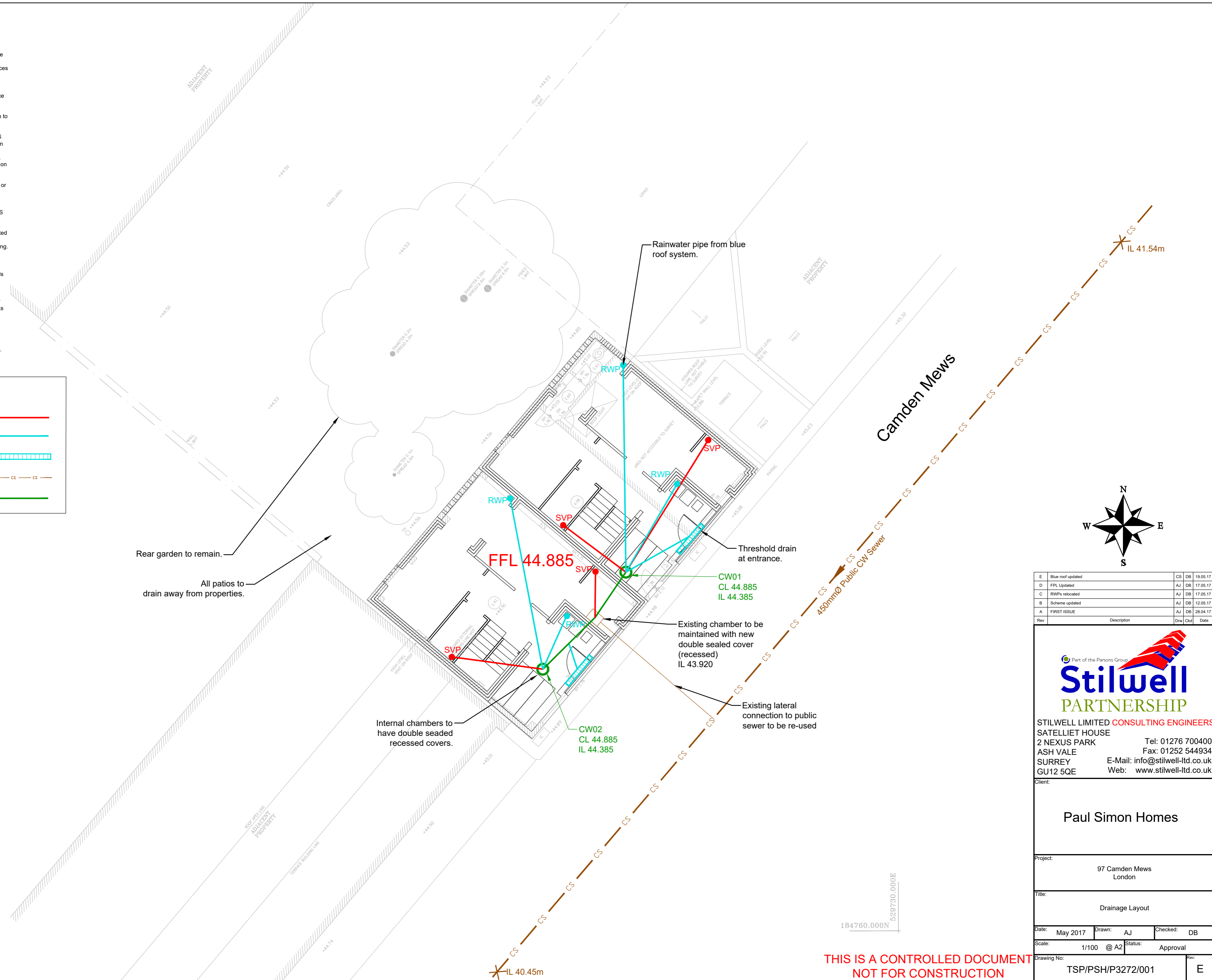


Drainage Construction Notes

1. All materials and workmanship related to private sewers shall be in accordance with Part H of the Building Regulation and BSEN752
2. All materials and workmanship related to adoptable sewers shall be in accordance with the Sewers For Adoption 7th Edition as published by the Water Services Association and any subsequent revisions shown by SHW.
3. All sustainable drainage (SuDS) to be in accordance with CIRIA C753 The SuDS Manual.
4. Gully grating and aco channel shall be ductile iron to BS EN124, Class D400, and kitemarked.
5. Manhole covers and frames to be ductile iron to BS EN124 Class D400 in carriageways and Class B125 in verges unless otherwise specified. Covers to be kitemarked and badged "SW" or "FW" as appropriate. Brick/brick infilled manhole covers are not to be used on adoptable manholes.
6. All clayware pipes to be vitrified clay to BS EN 295 or BS 65 and of minimum strength Class 120 or Extra Strength respectively.
7. All plastic pipes to be PVC-U in accordance with BS EN 1401.
8. All carrier drains under carriageway to be constructed with BEDDING TYPES S or Z depending on depth of cover as described on Typical Drainage Details drawing.
9. All pipe connections to be made soffit to soffit.
10. All pipework with less than 1.2m cover within roads or parking areas to have concrete bed & surround.
11. If the contractor finds any discrepancies in the information provided then he must notify the engineer immediately before any materials are ordered or works undertaken
12. All underslab drainage at minimum 1 in 40 fall unless noted otherwise.
13. All pipework to be a minimum of 150mm diameter.
14. All dimensions in millimetres unless otherwise stated.

KEY:

- Proposed Foul Water —
- Proposed Surface Water —
- Threshold Drain
- Existing CW Sewer — CS —
- Proposed Combined Water —



Rev	Description	Drw	Ckd	Date
E	Blue roof updated	CS	DB	19.05.17
D	FPL Updated	AJ	DB	17.05.17
C	RWPs relocated	AJ	DB	17.05.17
B	Scheme updated	AJ	DB	12.05.17
A	FIRST ISSUE	AJ	DB	28.04.17


Part of the Parsons Group
Stilwell
PARTNERSHIP
CONSULTING ENGINEERS

STILWELL LIMITED
 2 NEXUS PARK
 ASH VALE
 SURREY
 GU12 5QE

Tel: 01276 700400
 Fax: 01252 544934
 E-Mail: info@stilwell-ltd.co.uk
 Web: www.stilwell-ltd.co.uk

Client:
Paul Simon Homes

Project:
97 Camden Mews
London

Title:
Drainage Layout

Date: May 2017 Drawn: AJ Checked: DB

Scale: 1/100 @ A2 Status: Approval

Drawing No: TSP/PSH/P3272/001 Rev: E

**THIS IS A CONTROLLED DOCUMENT
NOT FOR CONSTRUCTION**