
Planning Responses

May 2017



Piercy & Company

122 Arlington Road
London NW1 7HP

Telephone
+44 (0)20 7424 9611

info@piercyandco.com
www.piercyandco.com

LONDON BOROUGH OF CAMDEN

ACCESS COMMENTS

From: Philippa Jackson
Tel. number: 020 7974 2305
Ref: 2017/2378/P
Date: 10th May 2017

To: Laura Hazelton

Re: West Yard, Camden Lock Market, London, NW1 8AF

The Proposed Work:

Installation of 34 temporary market stalls (A5 Use) in the West Yard of Camden Lock Market.

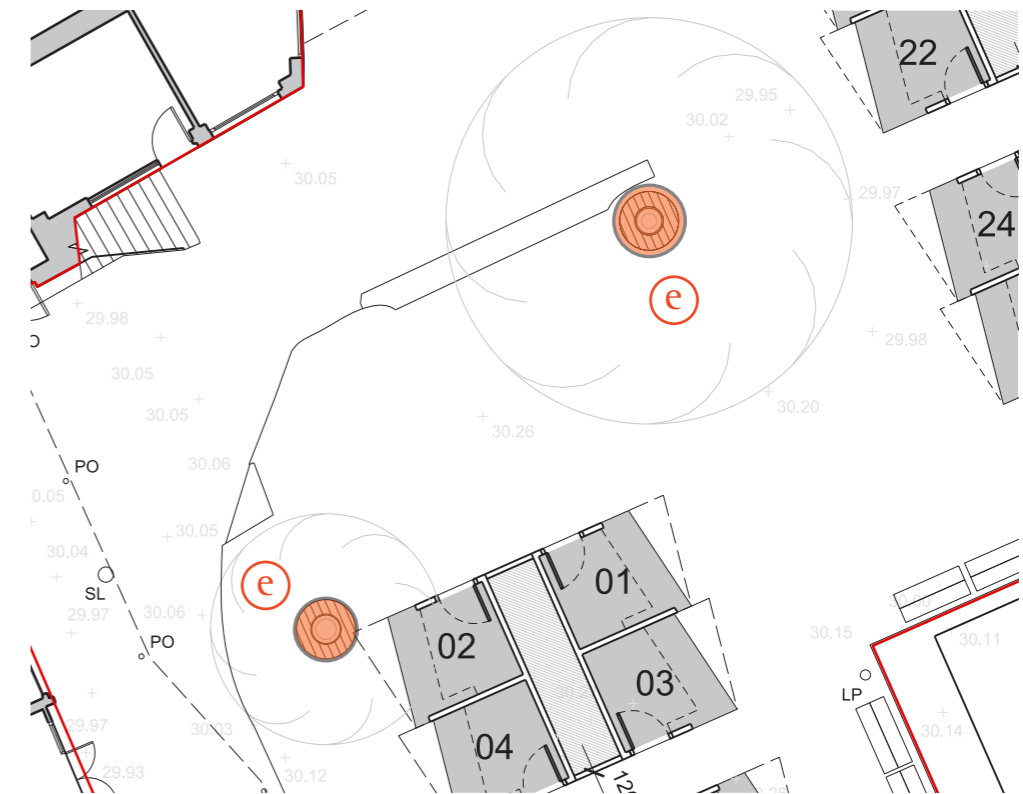
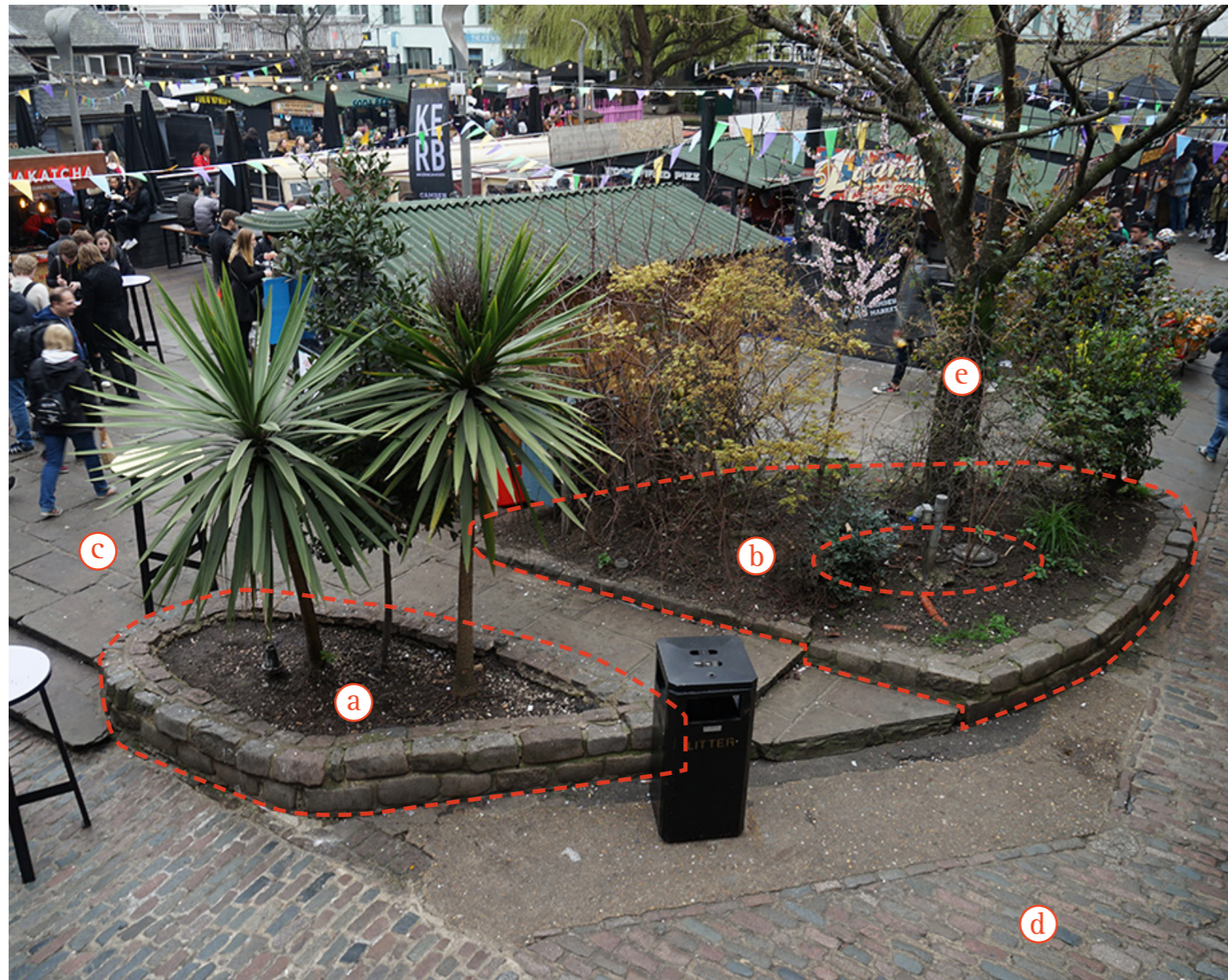
01

I have concerns regarding replacing the planters with cobbles. Whilst removing the planters to increase circulation space is a good idea, the surface material needs to be accessible and inclusive and cobbles do not meet this requirement. It would be nice if consideration was given to providing some accessible seating in lieu of planters.

02

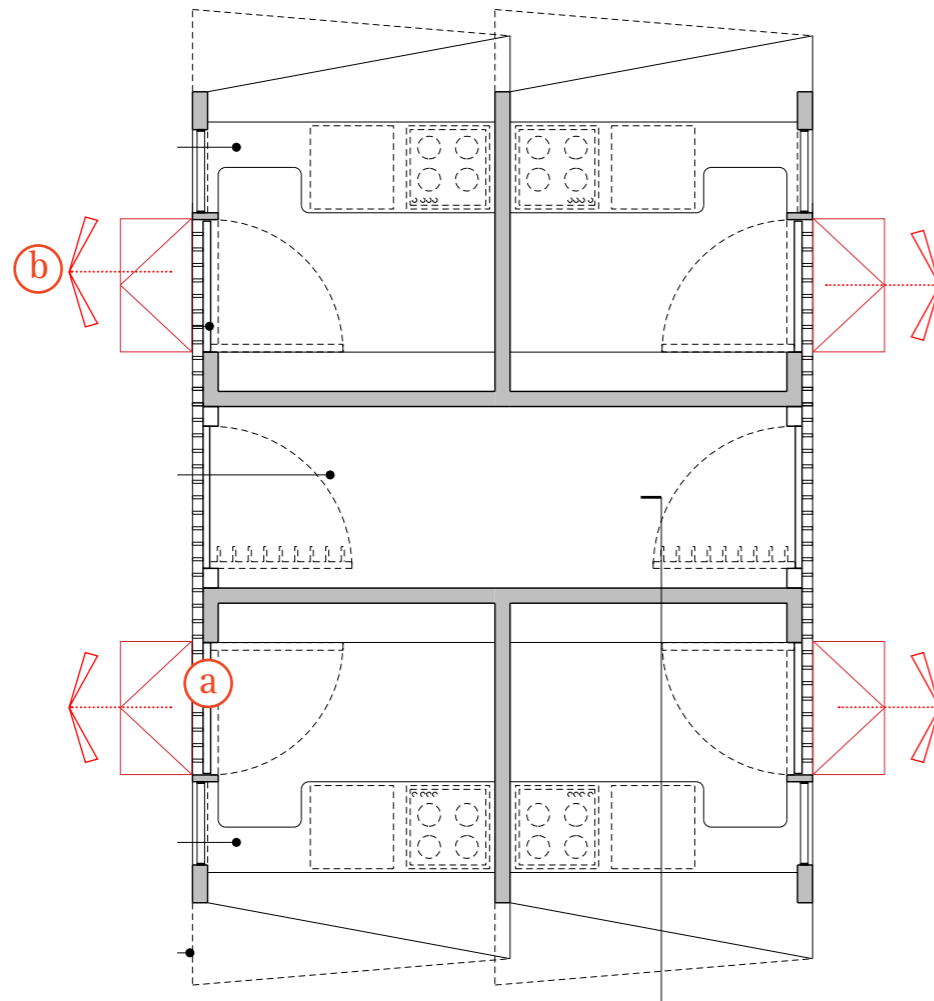
The access statement does not cover access to the units for staff or customers who may have a disability. It should be updated to cover these issues. How is level access to the units being provided? The serving counter seems too high for use by those of short stature or wheelchair and scooter users. Is an induction loop available at the counters to meet the needs of those with hearing impairments?

01



We feel it is vital to open up the areas around the planters to enhance circulation space. Therefore we propose to replace the planters (a/b) with paving slabs as per the central part of West Yard (c), rather than cobbles which currently surround it (d). The proposals retain the protected trees (e), and planters will remain around the base of the tree. The paving slabs will offer a similar level of accessibility and aesthetics, when compared with the surrounding pavers towards the centre of the market.

02



Plan of 4x proposed stalls

The nature of the temporary structures results in the internal floor level to be raised from the ground. Access to units can however be provided by temporary ramps (a). The raised floor also has benefits of improved Health & Safety and Hygiene, providing enhanced protection against vermin over the existing stalls.



b

Photo of the existing stalls with a side door highlighted.

Service to customers in wheelchairs or accessibility scooters can be via the access door to the side of the unit, as the current arrangements in the existing market stalls (b). Lowering the countertop heights will compromise space for under-counter appliances required by most traders.

. There is some concern that the circulation space around the stalls on the dock side is too narrow for safety ?

03



- (A) The proposed stalls in the west can be moved further away from the basin to a distance of c. 3-3.3m creating a comfortable amount of space for circulation.
- (B) The proposed stalls are 2.2m away from the planters, matching the distance of the line of existing stalls.
- (C) The proposed stalls to the east have been set back a further c.400mm from the line of existing stalls, resulting in a distance of 2.96m from the planters along the basin.