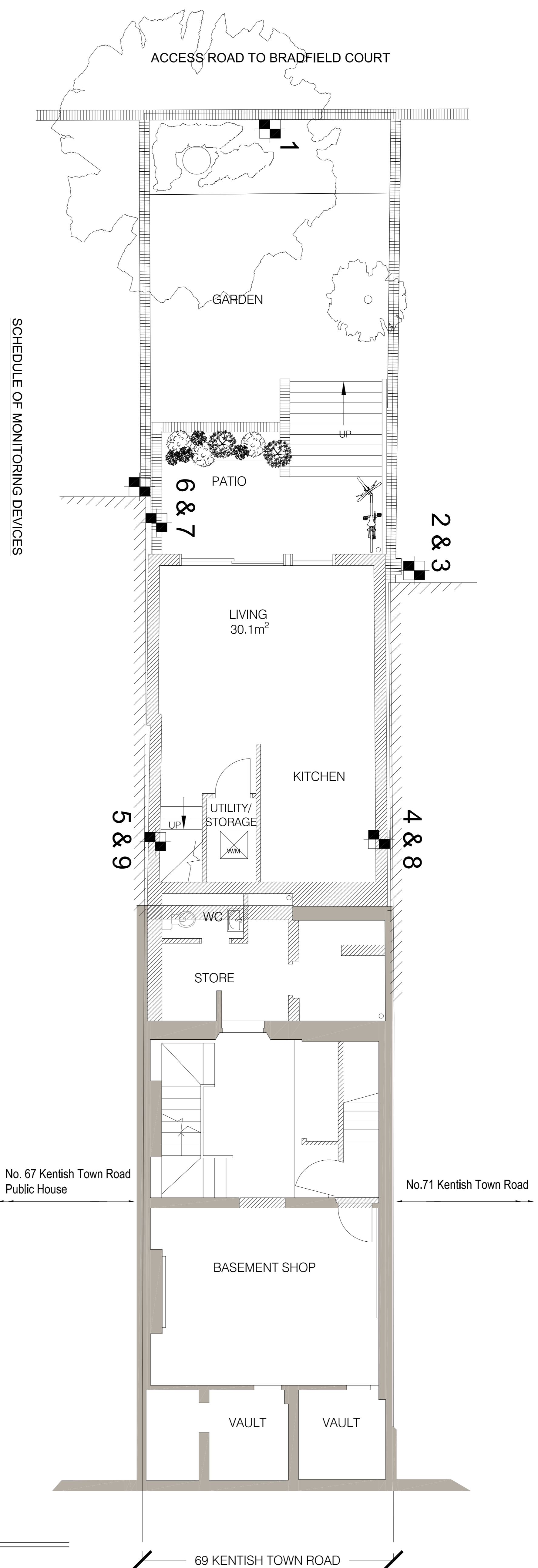


NOTES:

This drawing shall be read in conjunction with separate document titled 'Control of ground movement and building monitoring'

Level readings to be taken by a precision digital level. Tilt meter readings shall be bi-directional high precision wireless tilt units connected via the Internet so the tilt meters can be monitored remotely by the chosen specialist Contractor.



SCHEDULE OF MONITORING DEVICES

1. Remote precision level. Datum for site
2. Tilt meter mounted on corner of neighbours flank wall clear of proposed new extension
3. Precision bar coded perspex plate for formal levelling mounted on corner of neighbours flank wall above garden boundary wall
4. Tilt meter set at top of neighbours flank wall
5. Tilt meter set at top of neighbours flank wall
6. Tilt meter set at top of neighbours flank wall
7. Precision bar coded perspex plate for formal levelling set at high level on neighbours flank wall
8. Precision bar coded perspex plate for formal levelling set at high level on neighbours flank wall
9. Precision bar coded perspex plate for formal levelling set at high level on neighbours flank wall

MARK	DATE	MADE BY	REVISION

ROSE
+ ASSOCIATES
Consulting Civil and
Structural Engineers
Project Managers
E: info@roseassociates.co.uk

34th York Way
Kings Cross
London N1 9AB
T: 0207 833 0988

Studio 10 Darnley House
88a Fove Street Herford
Herefordshire SG14 1BY
T: 01992 210145

ARCHITECT:

JOB TITLE:
69 Kentish Town Road
London NW1 8NY

DRAWING TITLE:
Monitoring Schedule for
Adjacent Properties

SCALE:	1:100 @ A3	DATE:	January 2017
DRAWN BY:	ES	CAD/CHECKER:	
JOB NO:	16063	DRAWING NO:	02