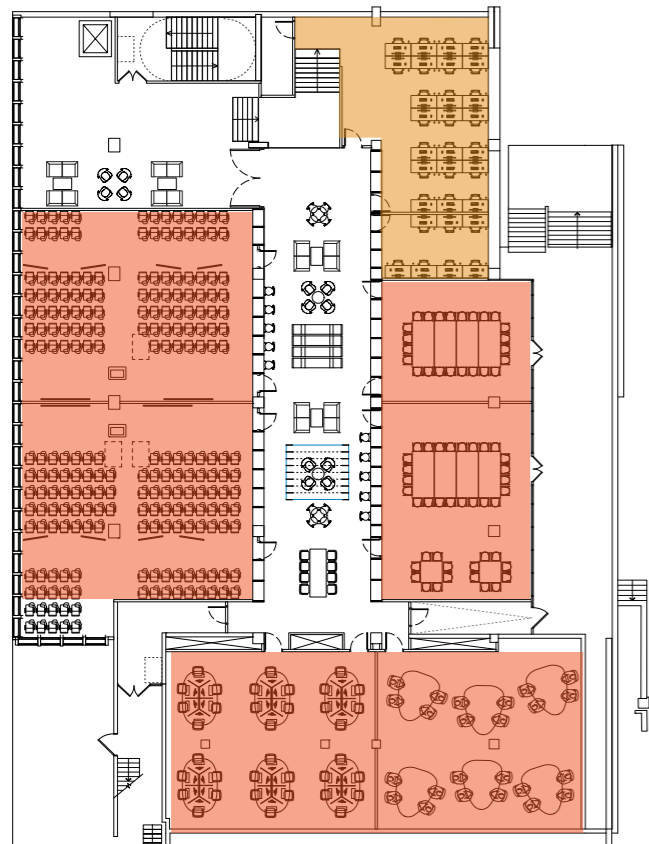


## 5 Interior Design Strategy

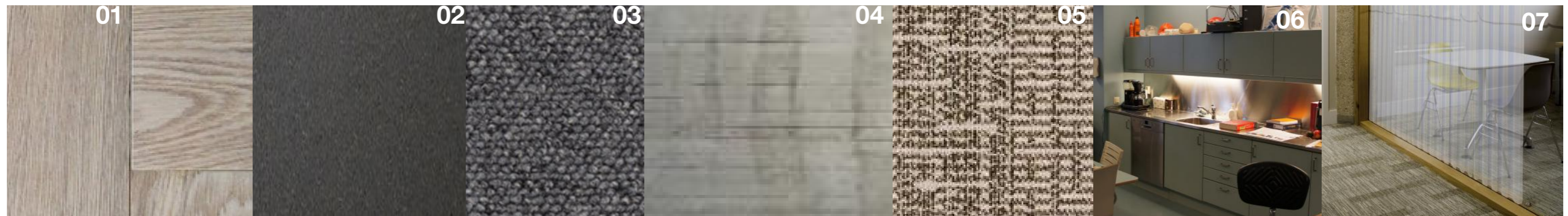
### 5.5 Teaching + Office

Teaching and Office spaces will keep a clean and smart interior with the use of grey carpets, white desking, and neutrally coloured upholstery.

This is practical for the level of robustness the spaces will need to consider and to keep a calm teaching or working environment.



- 01 Furniture details expressed in timber
- 02 Valchromat engineered coloured wood, grey for fitted joinery
- 03 Example carpet, grey textured finish from mid range miliken or Interface ranges
- 04 Exposed concrete, to columns and ceiling
- 05 Example carpet, grey textured finish from mid range miliken or Interface ranges
- 06 kitchenette / teapoints
- 07 voile curtains for privacy



# 5 Interior Design Strategy

## 5.6 Original Key Details

### Archive and Record Information

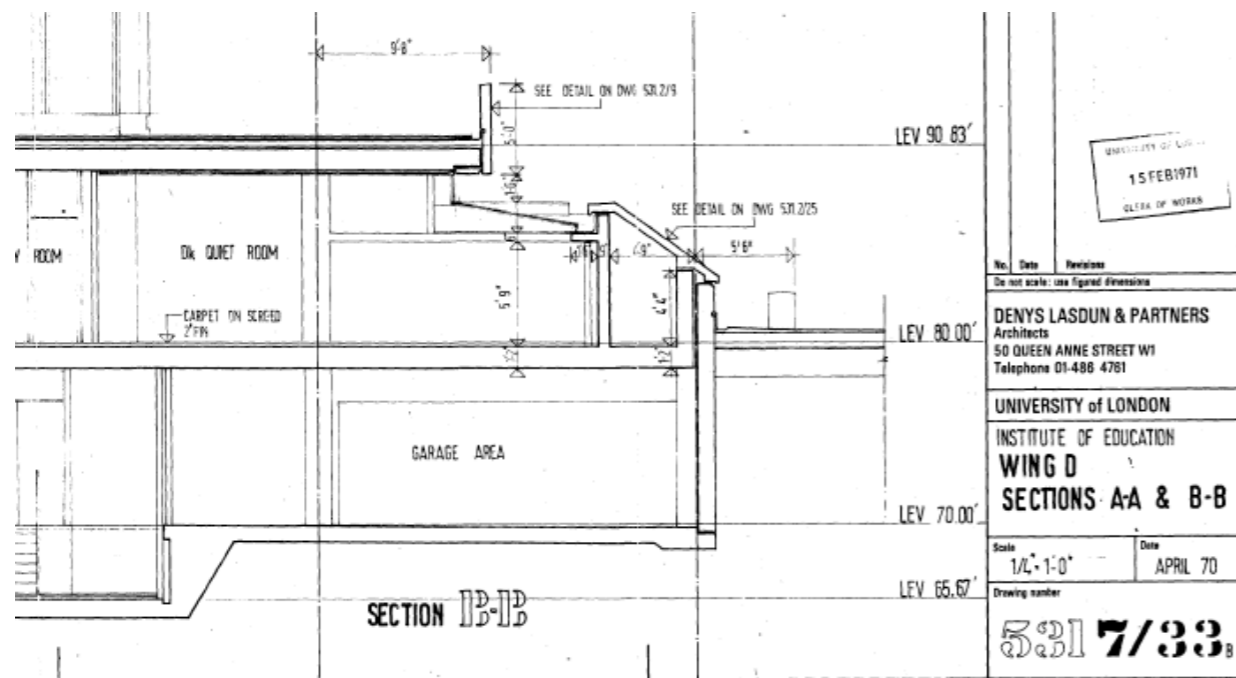
Often within refurbishment projects recovering high quality archive information can be challenging. Invariably the record information has been lost throughout the intervening years. In these circumstances it can mean that detailed decisions can only be made once the initial strip out of the building has begun. We are fortunate to not be in that situation.

The UCL Estates Department has provided scanned copies of over 3,000 drawings. This includes information from Sir Denys Lasdun's architectural practice and the MEP subcontractor. Contained within this significant archive are in excess of 600 drawings by Arup. These provide details for both the original 1970's scheme and also the 1990's Library Extension.

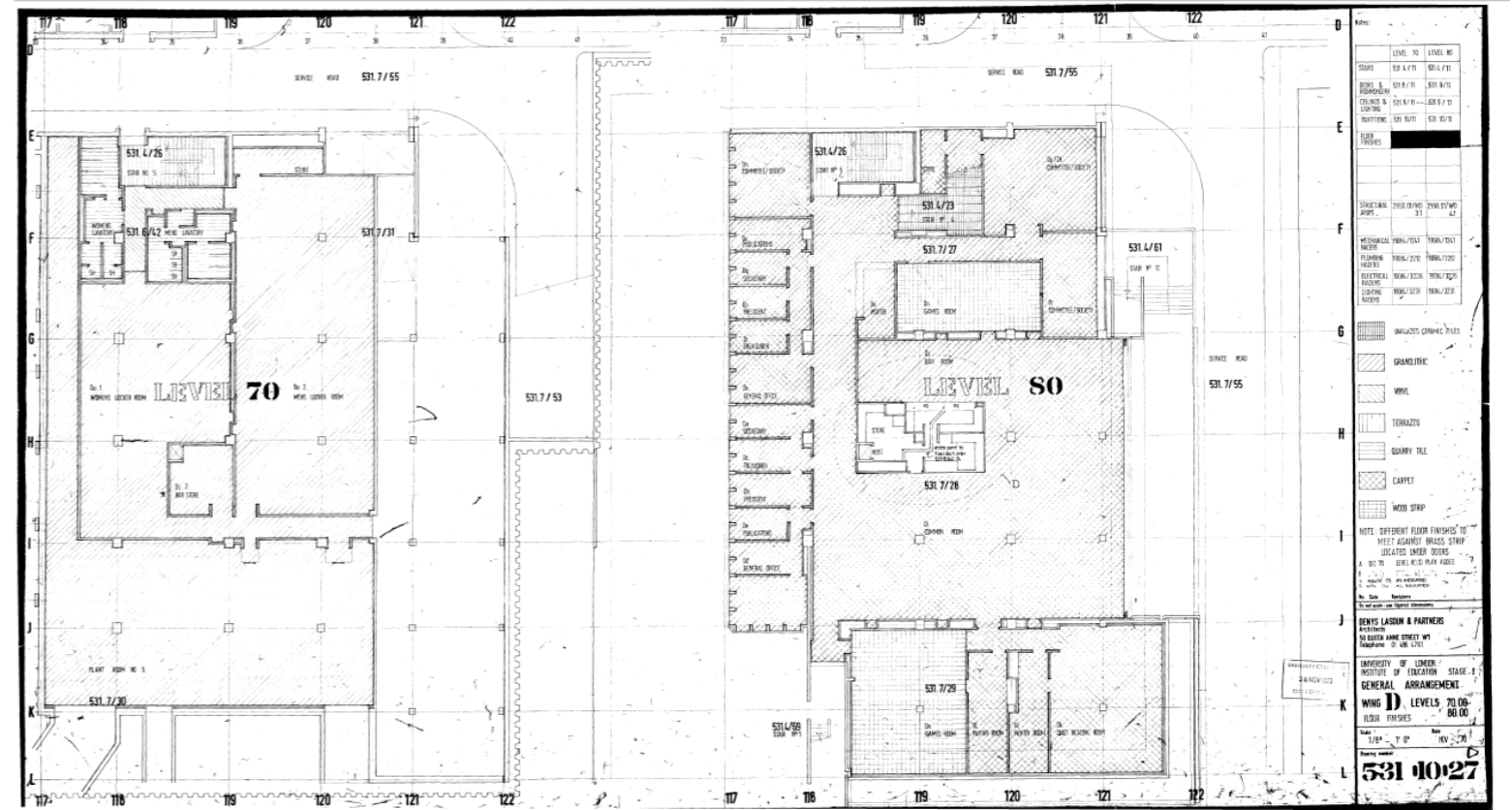
There are significant quantities of General Arrangement drawings such that the vast majority of the building can be determined and understood.

We have looked to these historic archive drawings to inform the proposals. Throughout the next stage of technical design, we will ensure that the detail, materiality and quality of the designs respect and enhance the original heritage asset.

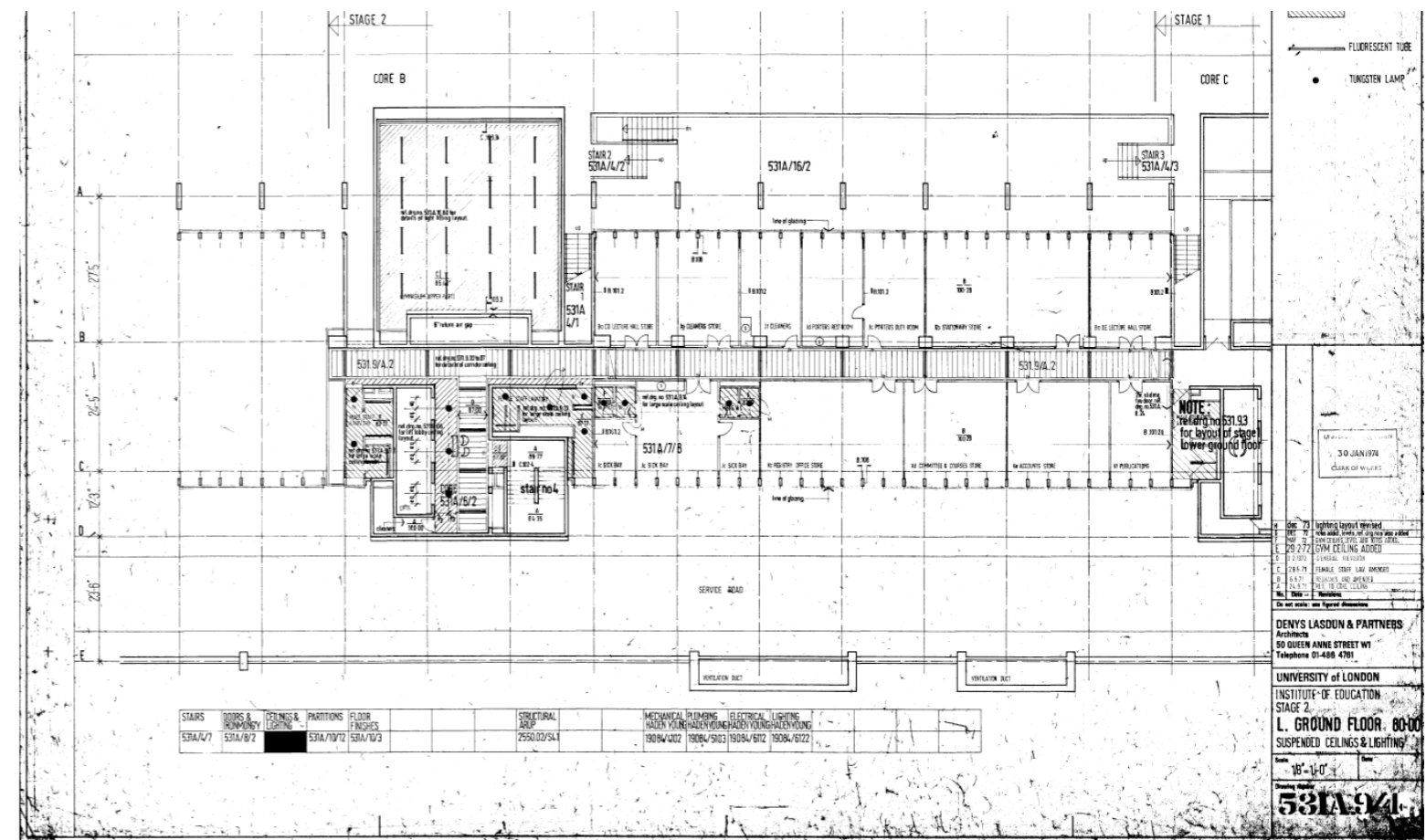
The next few pages illustrate some of the key indicative details that have been informed by Lasdun's originals, which we will develop in the next Technical Design Stage



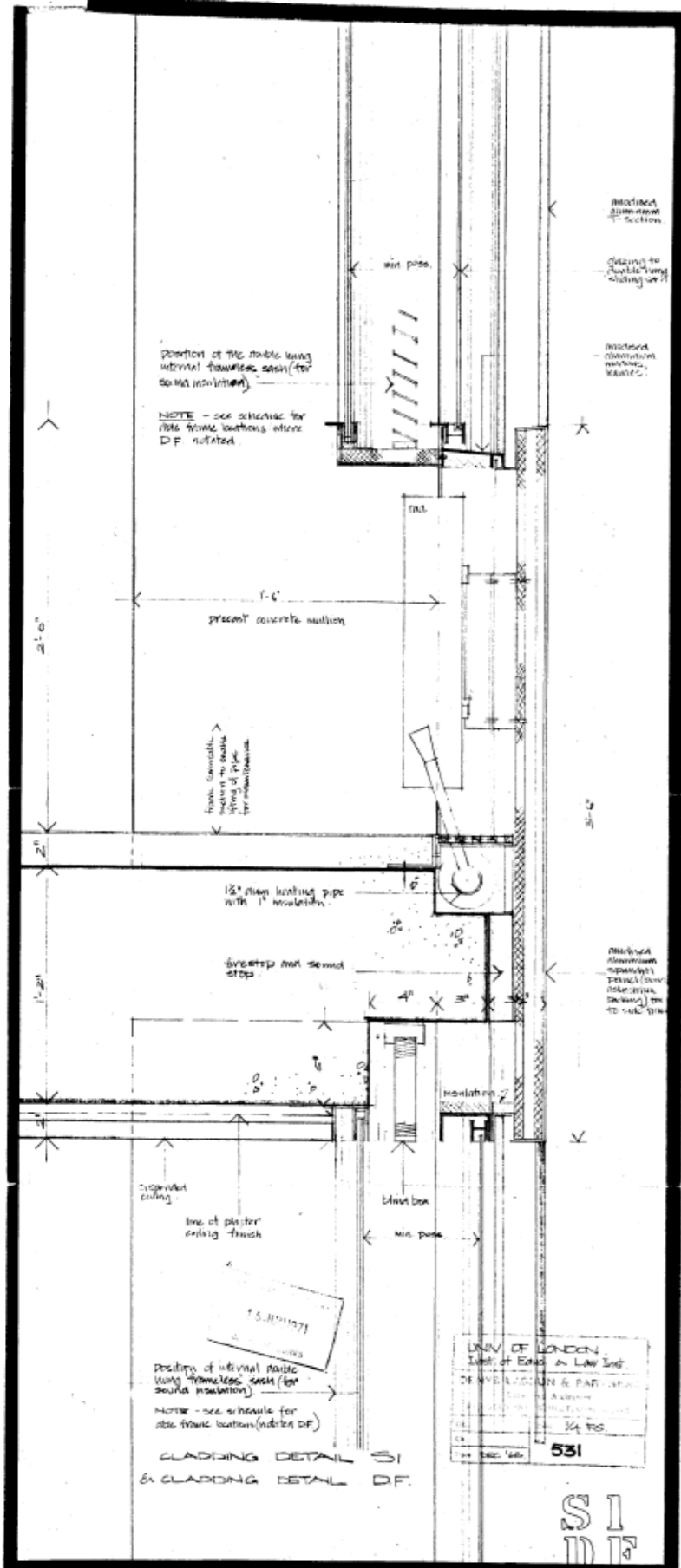
Section through rooflight in Level 3 Wing A



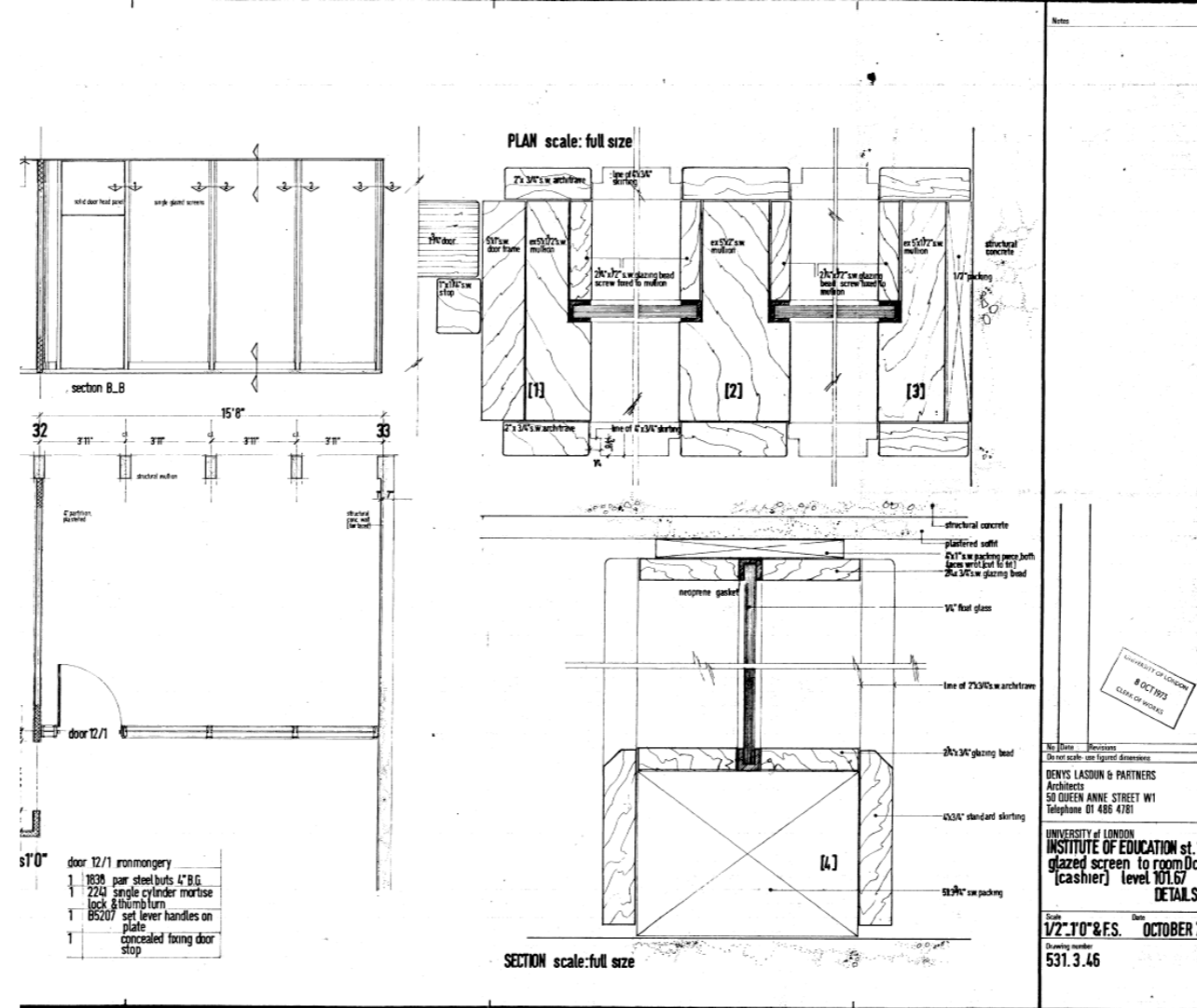
Floor finishes in Wing A Levels 2 and 3



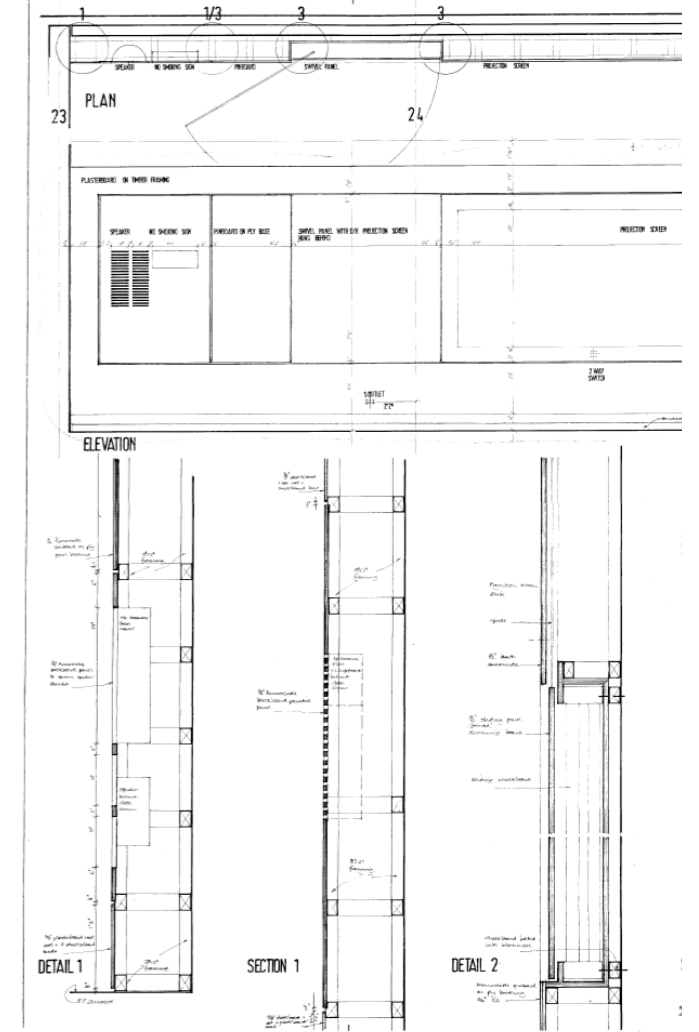
Ceiling finishes in Level 3 Core B-C



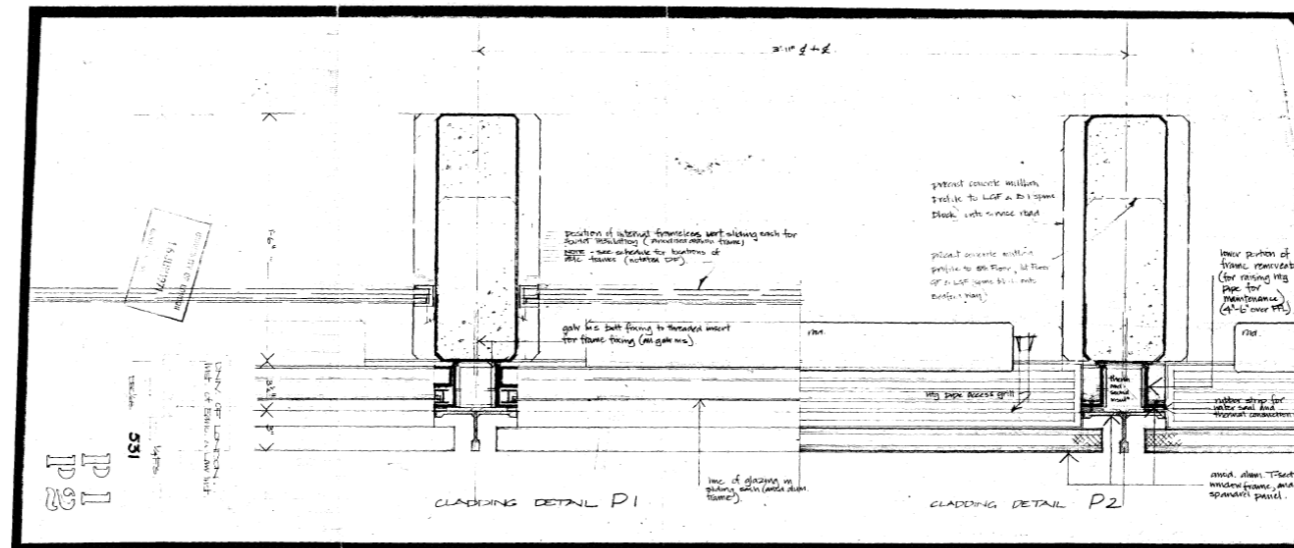
Typical section through curtain walling indicating original secondary glazing



Typical timber glazed screen details



Typical details through teaching 'wall' with integrated services



Typical plan through curtain walling and concrete mullions with and without original secondary glazing