

5 Interior Design Strategy

5.3 Joinery Wall and Study Booths

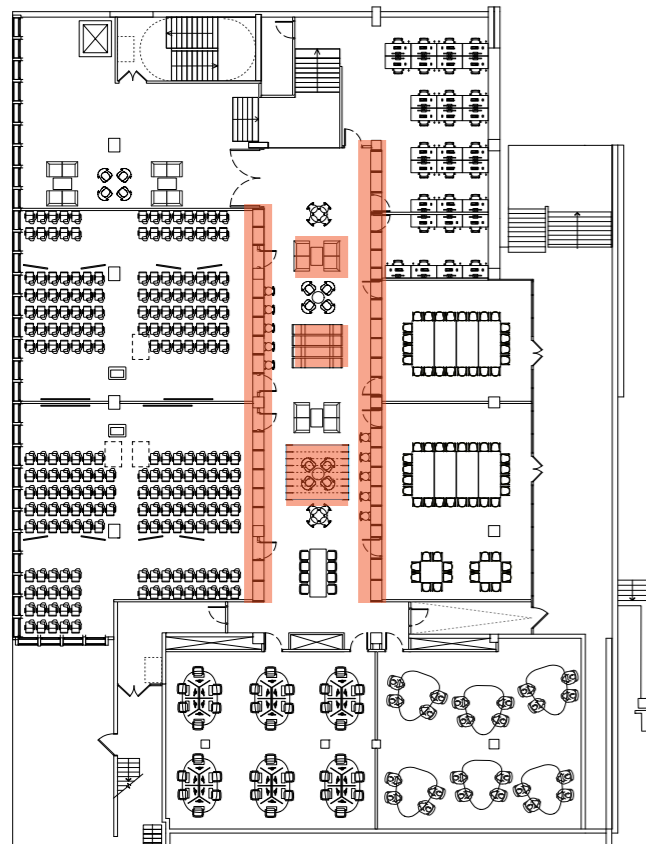
The strong rhythm of existing concrete mullions to the facade of 20 Bedford Way is used to inform the design of the joinery wall to the internal courtyard.

The ambition is to bring natural light and views to the courtyard, while the use of deep vertical fins brings a degree of privacy between the teaching and social learning zones.

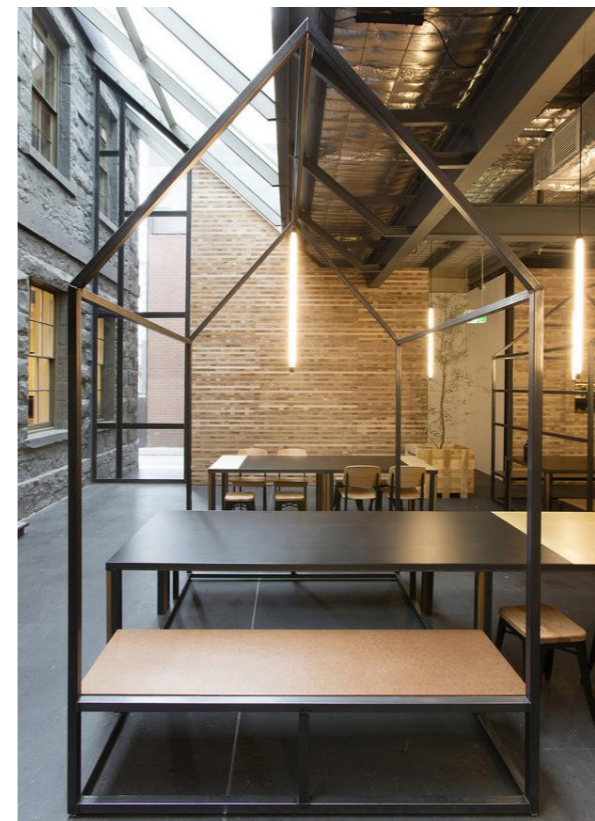
The depth of the wall allows bespoke study zones and seating areas to be incorporated. The detail of the fins references the form of the main building, and the intention is that this joinery strategy can be used as a kit of parts to inform the approach taken in future phases.



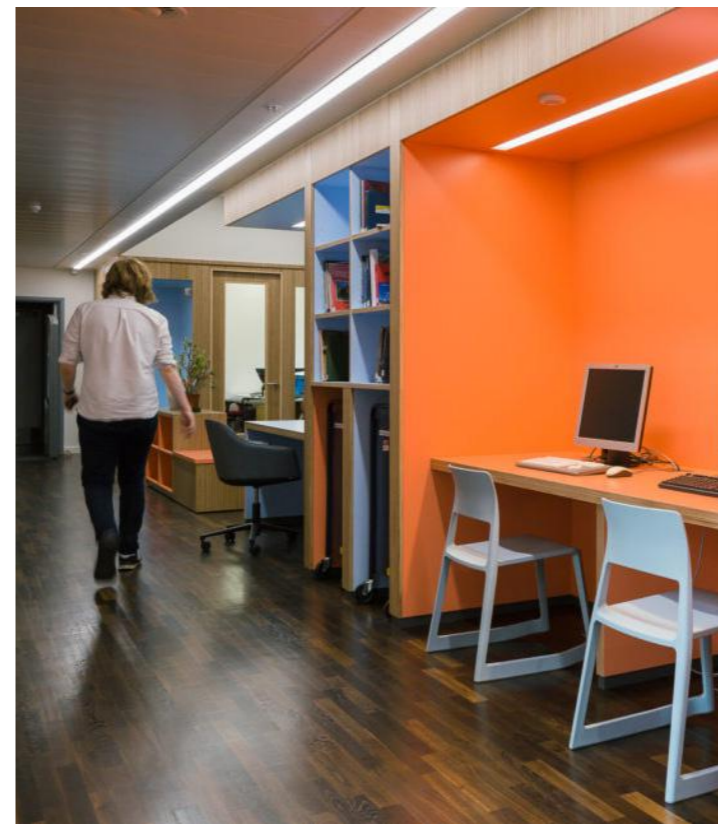
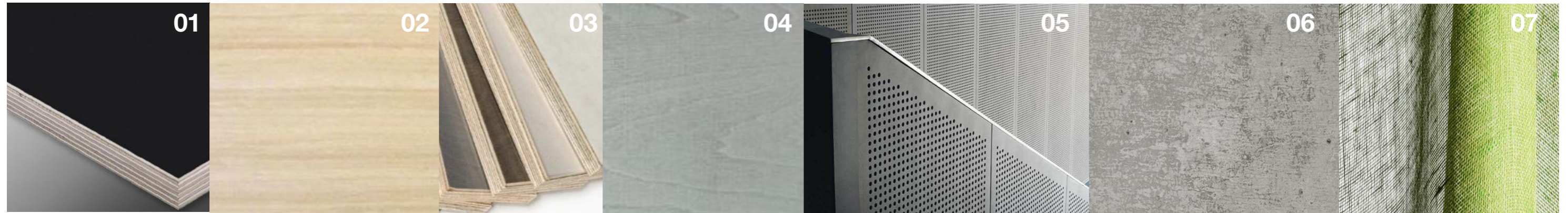
Elevation of joinery wall



Sketch visual of study boots and precedents



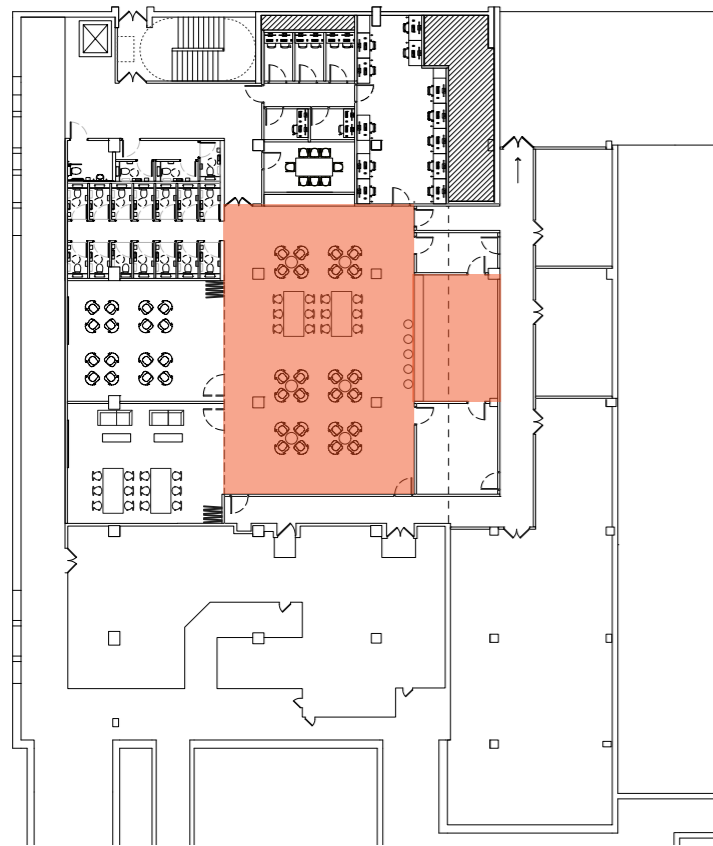
- 01 Valchromat engineered coloured wood / phenolic coated plywith exposed edges proposed for vertical fins
- 02 Pale Oak- Proposed for Horizontal elements of joinery wall
- 03 Decor Eco coloured lacquered plywood - Proposed for central 'pods'
- 04 Example of Grey Decor Eco coloured lacquerd plywood
- 05 Bespoke perforated acoustic linings to vertical surfaces
- 06 Repaired and exposed concrete to existing columns
- 07 Curtains to teaching room side of joinery wall



5 Interior Design Strategy

5.4 The Basement Bar

The strategy in the basement bar is to maintain and expose the robust existing concrete and supplement it with a light polished screed floor, clever lighting and softer, tactile finishes with joinery and rugs. The large, open and regular spaces enable the floor plates to be easily adapted to accommodate future change.



- 01 Concrete, to columns, flooring and ceiling
- 02 Steel finish to bar and tea point
- 03 Exposed plywood joinery to furniture elements
- 04 Textured rugs to central soft seating zone
- 05 Mesh fabric curtains to feature wall
- 06 Upholstery fabrics, Eleanor Pritchard for Kvadrat
- 07 Valchromat engineered coloured wood, black lacquered or dark metal panels forming bar front and rear bar shelves
- 08 Loose furniture with mixture of soft seating, high level and low level tables, stools and chairs
- 09 Lighting with black metal finish. Use of rail/ grid system

