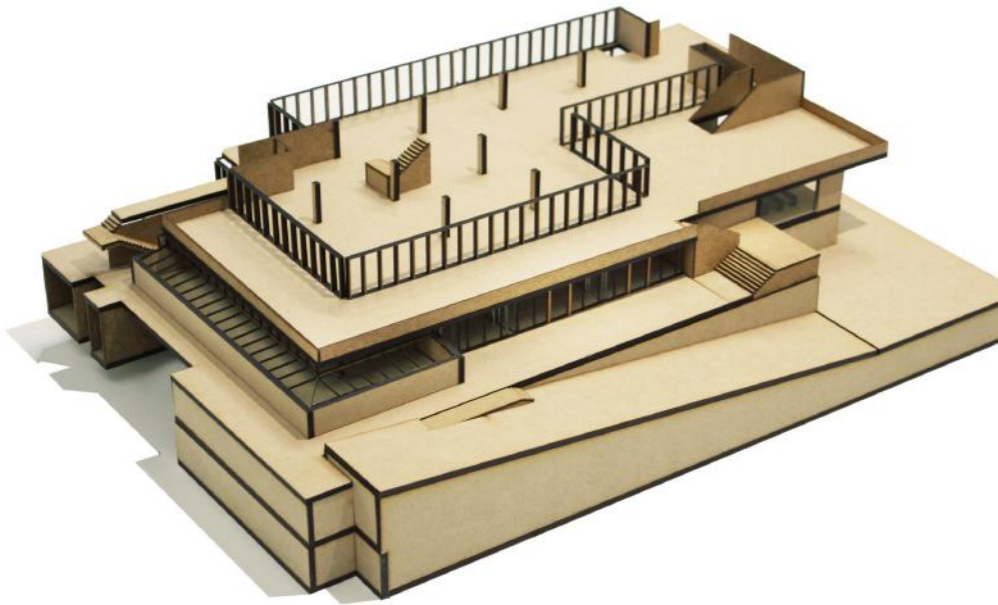


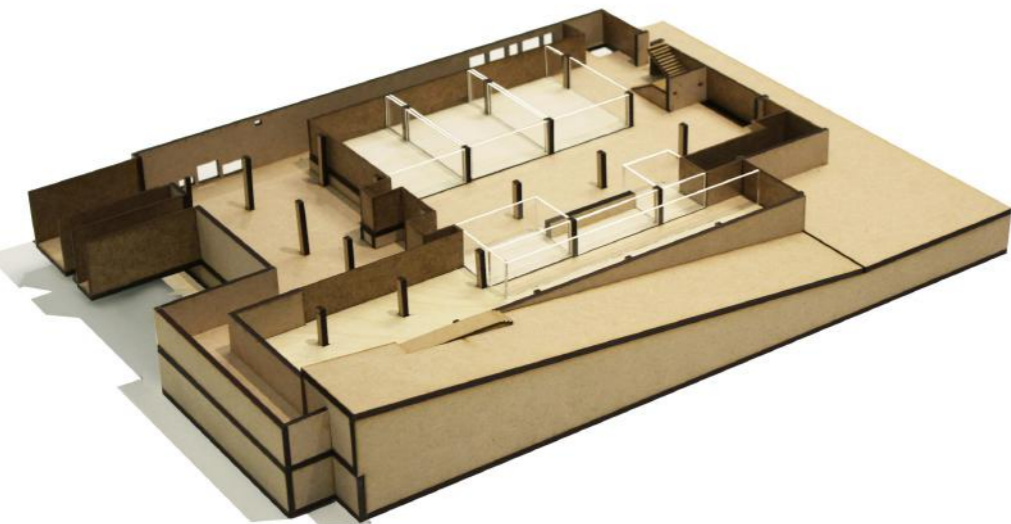
## 4 Architectural Proposals

### 4.6 Model

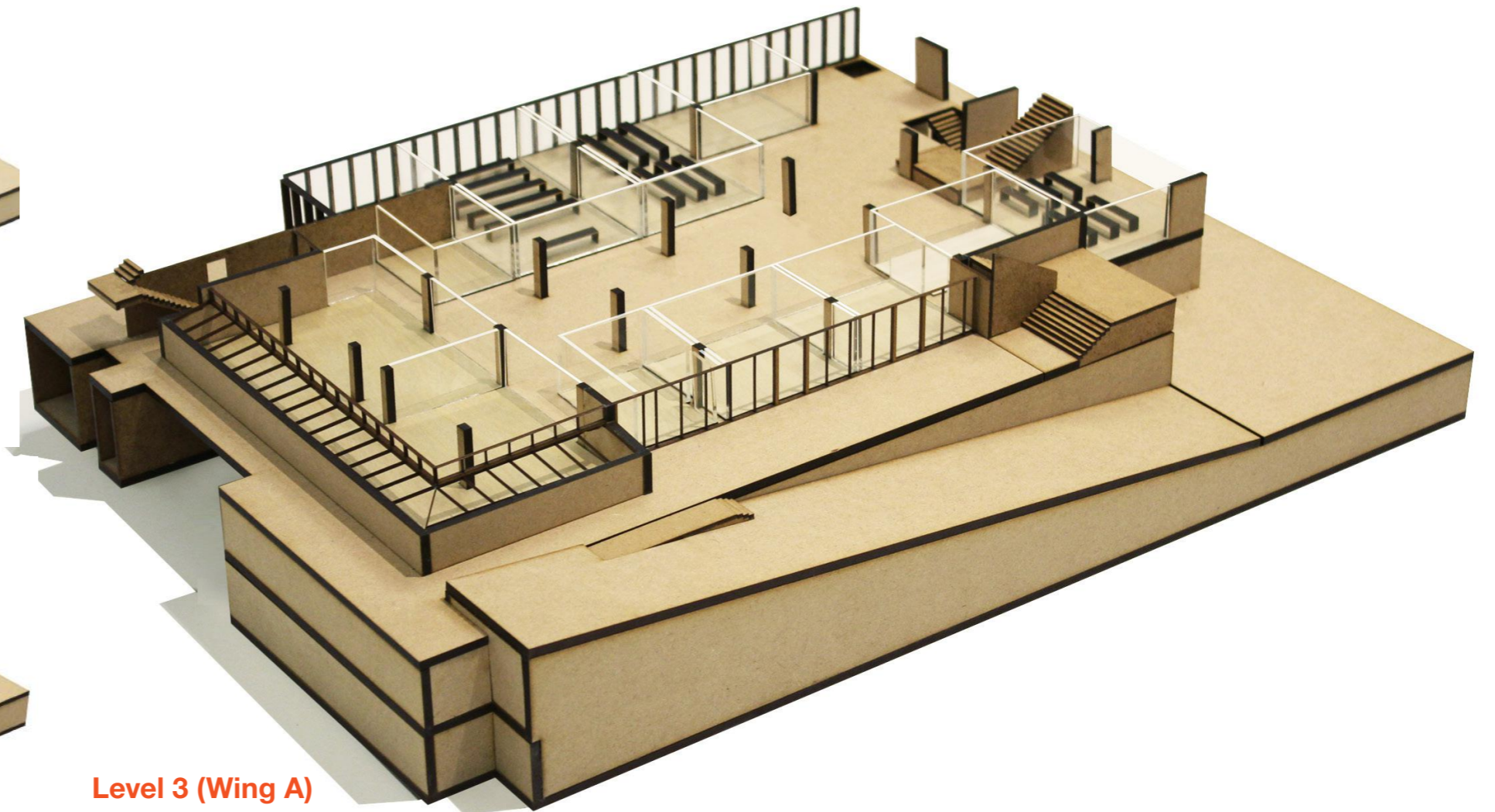
The design team have invested considerable effort exploring and developing the designs for Phase 1. Given the sensitivities of the listed building, it has been particularly important to develop a sophisticated appreciation of the building's structure and layout. This analysis has been crucial to the testing and refinement of the design using a variety of media and resources, particularly physical models, as illustrated on this page..



**Level 4 (Wing A)**



**Level 2 (Wing A)**



**Level 3 (Wing A)**

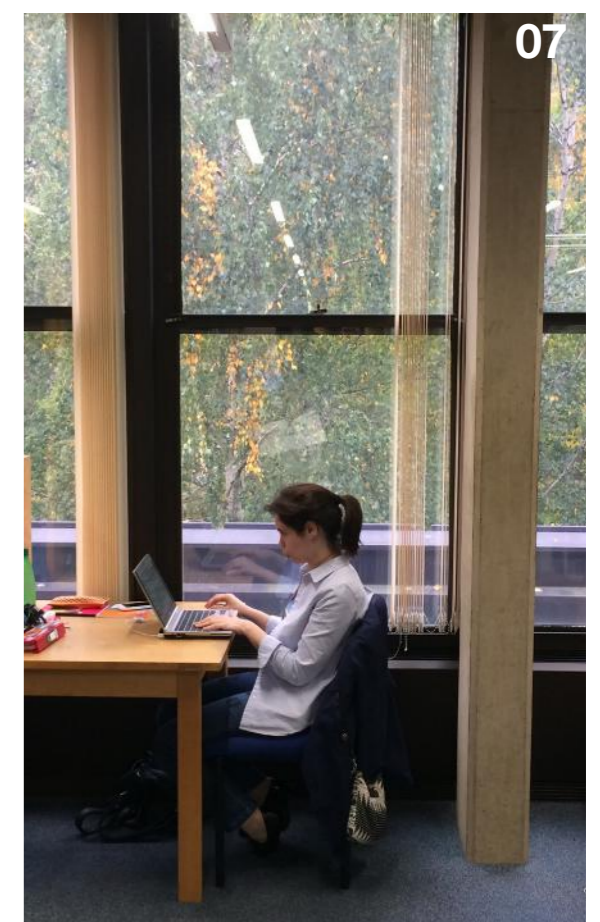
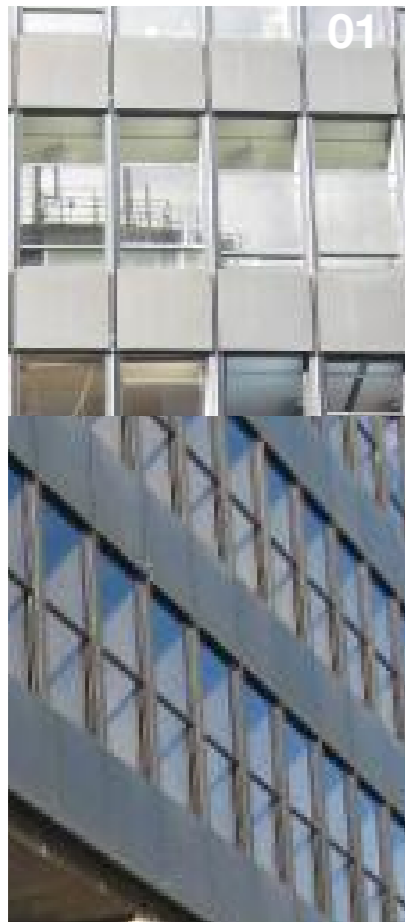
## 5 Interior Design Strategy

### 5.1 Interior Design Concepts

We have undertaken numerous site visits, reviewed existing archive and record drawings, and visited similar buildings in order to establish a sensitive interior design strategy that respects and enhances 20 Bedford Way. The following pages provide an overview of where we have drawn inspiration and how they have informed the Phase 1 designs. The next stage of Technical Design will confirm material specs and details.

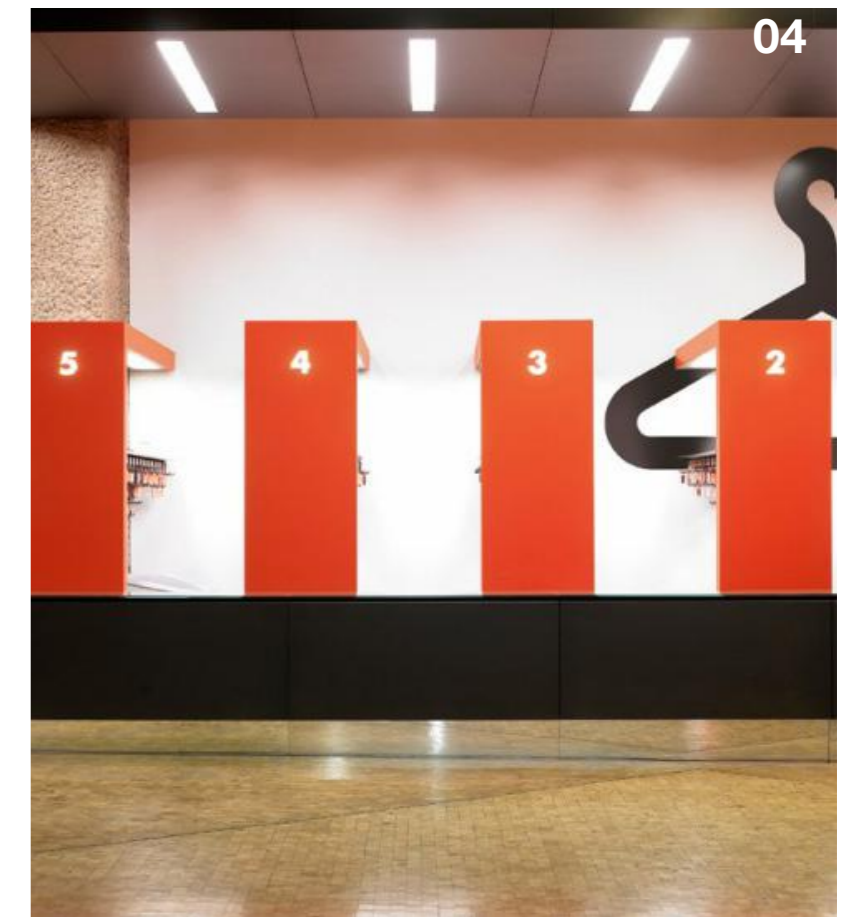
#### Respecting Existing Fabric, Materials & Form

- 01 Existing Facade with modular, repeated glazing and metal panels
- 02 Existing Concrete types with rough aggregate finish & visible shuttering texture
- 03 Existing Brick Floor at Level 4 Lobby & external steps
- 04 Existing Exposed concrete internal core and signage
- 05 Existing interior, door and panel and slim vision panel
- 06 Existing Concrete core with set back detail, dark metal repeated facade
- 07 Existing Library Interior, exposed concrete structure alongside dark metal window frames



### Learning from similar refurbishments of heritage assets

- 01 National Theatre , Denys Lasdun
- 02 Royal College of Physicians
- 03 National Theatre , Denys Lasdun
- 04 Barbican, Chamberlin, Powell & Bon,1982



## 5 Interior Design Strategy

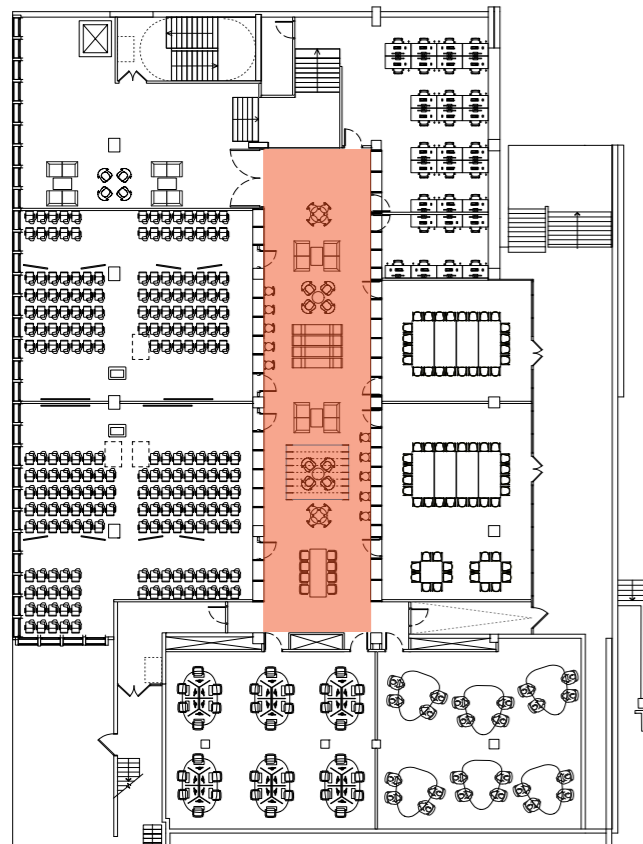
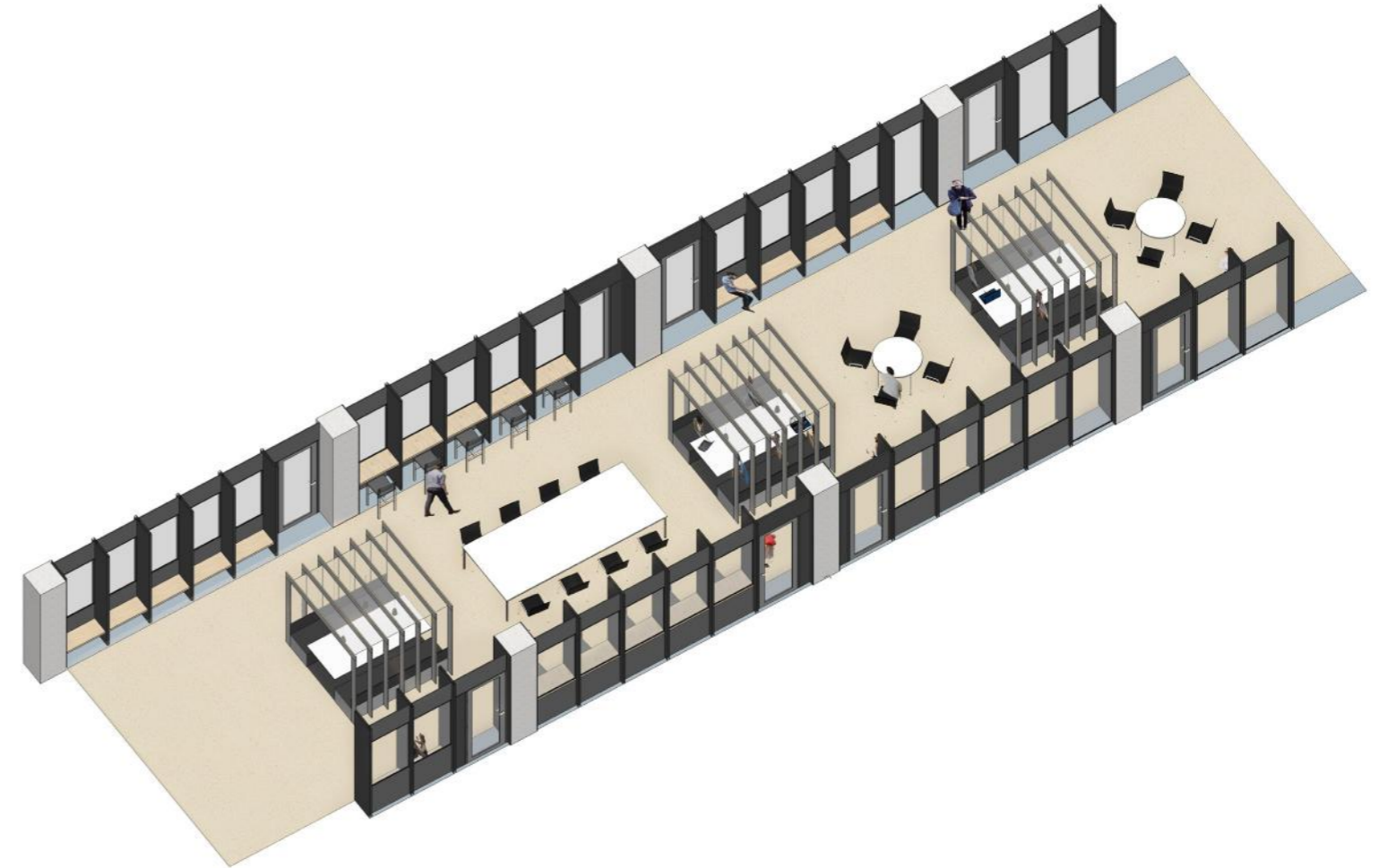
### 5.2 Key Elements - The Interior Courtyard

The 'interior courtyard' will be a valuable new social learning space to improve the student experience. The majority of current social learning space within 20 Bedford Way sit off narrow corridors with little room or suitable furniture for students to comfortably study or socialise.

In this new space in the Level 3 wing, there will be different types of break out and study space. 'Touchdown' study zones sit within the perimeter joinery wall, while bespoke 'booth' group seating zones are formed in the central area for a private group. More conventional areas of loose seating and tables provide additional space on a flexible basis.

The bespoke printed contract grade carpet adds a soft warmth and tactility to the area. The use of dark lacquered timber fins to the joinery wall provide useable recesses and reference the verticality of the original structural concrete mullions on the external facade.

The design of the interior courtyard maximises glazing to bring as much natural light and views into the centre of a deep plan. Careful lighting, planting and acoustics can help add to the experience of the space and the well-being of the occupants.



1. bespoke printed contract grade carpet
2. timber workbenches and seating
3. dark coated plywood fins
4. bespoke perforated dark coated plywood acoustic panels
5. glazed screens
6. concrete soffit
7. acoustic baffles
8. bespoke study booths
9. loose tables and chairs



- 01 Flooring Option - Example of bespoke printed contract grade carpet
- 02 Flooring Option - Example of carpet textured finish from mid range miliken or Interface ranges
- 03 Valchromat engineered coloured wood (top), phenolic/melamine coated plywood with exposed edges (bottom)
- 04 Exposed concrete, to columns and ceiling
- 05 Concrete floor tiles, sit between fins within joinery wall
- 06 Upholstery fabrics, Eleanor Pritchard for Kvadrat
- 07 Floor Rug, Object Carpets, Flash 1400, Ref: 1439
- 08 Bespoke perforated acoustic linings

