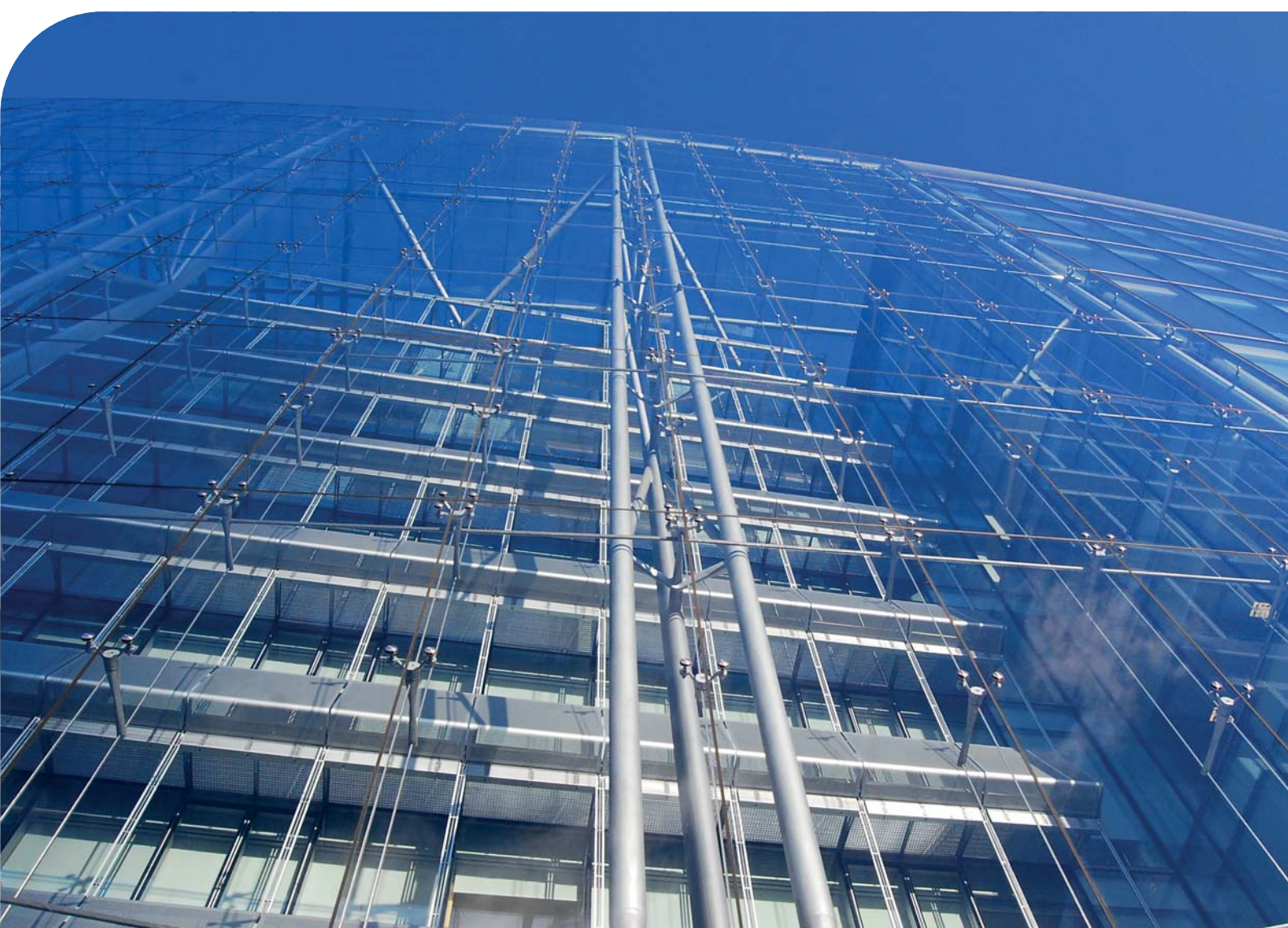


Camden Planning Guidance

Design

London Borough of Camden

CPG **1**



July 2015

CPG1 Design

1	Introduction.....	5
2	Design excellence	9
3	Heritage.....	15
4	Extensions, alterations and conservatories.....	25
5	Roofs, terraces and balconies	35
6	Landscape design and trees.....	45
7	Shopfronts.....	57
8	Advertisements, signs and hoardings	73
9	Designing safer environments	79
10	Recycling and Waste Storage	89
11	Building services equipment.....	97
12	Artworks, statues and memorials.....	101

1 Introduction

What is Camden Planning Guidance?

- 1.1 We have prepared this Camden Planning Guidance to support the policies in our Local Development Framework (LDF). This guidance is therefore consistent with the Core Strategy and the Development Policies, and forms a Supplementary Planning Document (SPD) which is an additional “material consideration” in planning decisions. The Council adopted CPG1 Design on 6 April 2011 following statutory consultation. This document was updated in 2013 to include Section 12 on artworks, statues and memorials, and updated in 2015 to revise the guidance for recycling and waste storage. Details on these updates and the consultation process are available at camden.gov.uk/cpg.
- 1.2 The Camden Planning Guidance covers a range of topics (such as housing, sustainability, amenity and planning obligations) and so all of the sections should be read in conjunction, and within the context of Camden’s LDF.

Design in Camden

- 1.3 Camden has many attractive and historic neighbourhoods as well as both traditional and modern buildings of the highest quality. These are a significant reason that the borough is such a popular place to live, work and visit. As well as conserving our rich heritage we should also contribute towards it by ensuring that we create equally high quality buildings and spaces which will be appreciated by future generations.
- 1.4 This objective of achieving high quality design does not just concern new development or large-scale schemes, but also includes the replacement, extension or conversion of existing buildings. The detailed guidance contained within this section therefore considers a range of design-related issues for both residential and commercial property and the spaces around them.



What does this guidance cover?

- 1.5 This guidance provides information on all types of detailed design issues within the borough and includes the following sections:

1. Introduction
2. Design excellence
3. Heritage
4. Extensions, alterations and conservatories
5. Roofs, terraces and balconies
6. Landscape design and trees
7. Shopfronts
8. Advertisements, signs and hoardings
9. Designing safer environments
10. Waste recyclables storage
11. Building services equipment
12. Artworks, statues and memorials

- 1.6 This guidance supports the following Local Development Framework policies:

Core Strategy

- CS14 Promoting high quality places and conserving our heritage
- CS15 Protecting and improving our parks and open spaces & encouraging biodiversity
- CS17 Making Camden a safer place
- CS18 Dealing with our waste and encouraging recycling

Development Policies

- DP24 Securing high quality design
- DP25 Conserving Camden's heritage
- DP27 Basements and lightwells
- DP29 Improving access
- DP30 Shopfronts

- 1.7 It should be noted that the guidance covered in this section only forms part of the range of considerations that you should address when proposing new development. In addition to these specific design matters you should also consider wider issues such as cycle storage, residential space standards, wheelchair housing, designing in sustainability measures and impacts on neighbours. Further guidance on these, and other issues, is contained within the Local Development Framework documents and the Camden Planning Guidance.

2 Design excellence

KEY MESSAGES

Camden is committed to excellence in design and schemes should consider:

- The context of a development and its surrounding area;
- The design of the building itself;
- The use of the building;
- The materials used; and
- Public spaces.

- 2.1 High quality design makes a significant contribution to the success of a development and the community in which it is located. Design of the built environment affects many things about the way we use spaces and interact with each other, comfort and enjoyment, safety and security and our sense of inclusion.
- 2.2 The purpose of this guidance is to promote design excellence and to outline the ways in which you can achieve high quality design within your development.
- 2.3 This guidance primarily relates to Core Strategy Policy CS14 Promoting high quality places and conserving our heritage and Development Policies DP24 Securing high quality design.



When does this apply?

- 2.4 This guidance applies equally to all development, whether new build, converted, refurbished, extended and altered development. However, the implications for a proposal will vary greatly depending on the nature of the site, the proposed use, the scale of development, its interaction with surrounding sites, and existing buildings and structures on the site.

- 2.5 Other sections in this Camden Planning Guidance (CPG) relate to specific types of developments and relevant design matters, for example advertisements, signs and hoardings, designing safer environments, extensions, alterations and conversions, heritage and shopfronts.

General guidance on design

- 2.6 Camden is committed to excellence in design. The borough contains many special and unique places, many of which are protected by conservation area status. In accordance with draft London Plan policies 7.1–7.7, Core Strategy policy CS14 requires development schemes to improve the quality of buildings, landscaping and public spaces and we will not approve design which is inappropriate to its context or fails to improve the character of an area.
- 2.7 We are working with our partners to promote design excellence and improve public buildings, landscaping and the street environment. We have established the Camden Design Initiative which seeks to encourage involvement, awareness and understanding of good design and this is promoted through the bi-annual Camden Design Awards which acknowledge high quality and innovative design. We are also a promoter of the national Civic Trust Awards which are awarded to buildings judged to have made a positive cultural, social or economic contribution to the local community.
- 2.8 In order to achieve high quality design in the borough we require applicants to consider buildings in terms of context, height, accessibility, orientation, siting, detailing and materials. These issues apply to all aspects of the development, including buildings and other structures (e.g. substations, refuse or cycle storage), outdoor spaces, landscaping and access points and should be considered at an early stage in the design of a development, as these elements are often difficult to change in later stages.



Context

2.9 Good design should:

- positively enhance the character, history, archaeology and nature of existing buildings on the site and other buildings immediately adjacent and in the surrounding area, and any strategic or local views. This is particularly important in conservation areas;
- respect, and be sensitive to, natural and physical features, both on and off the site. Features to be considered include, but are not limited to: slope and topography, vegetation, biodiversity, habitats, waterways and drainage, wind, sunlight and shade, and local pollutant sources. Movement of earth to, from and around the site should be minimised to prevent flood risk, land instability and unnecessary transport of aggregates, especially by road; and
- consider connectivity to, from, around and through the site for people using all modes of transport, including pedestrians, cyclists, wheelchair users, those with visual impairments, people with pushchairs, and motorised vehicles.

Building design

2.10 Good design should:

- ensure buildings do not significantly overshadow existing/proposed outdoor spaces (especially designated open spaces), amenity areas or existing or approved renewable energy facilities (such as solar panels). For further information, refer to CPG3 Sustainability Renewable energy (A shadowing exercise may be required for tall buildings or where they are near open spaces);
- consider the extent to which developments may overlook the windows or private garden area of another dwelling;
- consider views, both local and London wide, and particularly where the site is within a recognised strategic viewing corridor (as shown on the policy Proposals Map);
- consider the degree of openness of an area and of open spaces, including gardens including views in and out of these spaces
- contributions to the character of certain parts of the borough;
- provide visual interest for onlookers, from all aspects and distances. This will involve attention to be given to both form and detail;
- consider opportunities for overlooking of the street and, where appropriate, provide windows, doors and other 'active' features at ground floor; and
- incorporate external facilities such as renewable energy installations, access ramps, plant and machinery, waste storage facilities and shading devices into the design of the development. Careful consideration must be given to ensure that the facility does not harm the built environment.

Land use

- 2.11 The use of a building should:
- take into account the proposed use, and the needs of the expected occupants of the buildings and other users of the site and development; and
 - provide clear indication of the use of the building. It is noted, however, that reuse of existing buildings, as well as the accommodation of possible future changes of use, can make this difficult.

Materials

- 2.12 Materials should form an integral part of the design process and should relate to the character and appearance of the area, particularly in conservation areas or within the setting of listed buildings. The durability of materials and understanding of how they will weather should be taken into consideration. The quality of a well designed building can be easily reduced by the use of poor quality or an unsympathetic palette of materials. We will encourage re-used and recycled materials, however these should be laid to ensure a suitable level accessible surface is provided. Further guidance is contained within CPG3 Sustainability (Sustainable use of materials).

Tall buildings

- 2.13 Tall buildings in Camden (i.e. those which are substantially taller than their neighbours and/or which significantly change the skyline) will be assessed against a range of design issues, including:
- how the building relates to its surroundings, both in terms of how the base of the building fits in with the streetscape, and how the top of a tall building affects the skyline;
 - the contribution a building makes to pedestrian permeability and improved public accessibility;
 - the relationship between the building and hills and views;
 - the degree to which the building overshadows public spaces, especially open spaces and watercourses; and
 - the historic context of the building's surroundings.
- 2.14 In addition to these design considerations tall buildings will be assessed against a range of other relevant policies concerning amenity, mixed use and sustainability. Reference should be made to this CPG (Heritage chapter), CPG3 Sustainability (Climate change adaptation chapter) and CPG6 Protecting and improving quality of life (Overlooking and privacy and Wind/microclimate chapters).
- 2.15 Where a proposal includes a development that creates a landmark or visual statement, particular care must be taken to ensure that the location is appropriate (such as a particular destination within a townscape, or a particular functional node) and that the development is sensitive to its wider context. This will be especially important where the

development is likely to impact upon heritage assets and their settings (including protected views).

- 2.16 Design should consider safety and access. Guidance on these issues is contained within this CPG (Designing safer environments chapter) and CPG4 Protecting and improving quality of life (Access for all chapter). Schemes over 90m should be referred to the Civil Aviation Authority.

Design of public space

- 2.17 The design of public spaces, and the materials used, is very important. The size, layout and materials used in the spaces around buildings will influence how people use them, and help to create spaces that are welcoming, attractive, accessible, safe and useful. They can also contribute to other objectives such as reducing the impact of climate change (e.g. the use of trees and planters to reduce run-off and provide shading), biodiversity, local food production and Sustainable Urban Drainage Systems (SUDs), and provide useful amenity space. In Conservation Areas there may be particular traditional approaches to landscaping/boundary treatments that should be respected in new designs.
- 2.18 The spaces around new developments should be considered at the same time as the developments themselves and hard / soft landscaping and boundary treatments should be considered as part of wider cohesive design. The landscaping and trees chapter in this CPG, and individual Conservation Area Appraisals, provide further guidance on this issue.
- 2.19 Public art can be a catalyst for improved environmental quality by upgrading and animating public space and enhancing local character and identity through helping create a sense of place. The Council will therefore encourage the provision of art and decorative features as an integral part of public spaces, where they are appropriate to their location and enhance the character and environment.
- 2.20 It is important that public spaces and streets are maintained to a high standard and so, in line with the Local Implementation Plan, the Council will continue to undertake public space enhancement works through specifically targeted programmes. The Designing safer environments chapter in this CPG provides more detailed guidance on the incorporation of safety and security considerations in public spaces.

Design and access statements

- 2.21 Design and Access Statements are documents that explain the design ideas and rationale behind a scheme. They should show that you have thought carefully about how everyone, including disabled people, older people and children, will be able to use the places you want to build.
- 2.22 Design and Access Statements should include a written description and justification of the planning application and sometimes photos, maps and drawings may be useful to further illustrate the points made. The length

and detail of a Design and Access Statement should be related to the related to the size and complexity of the scheme. A statement for a major development is likely to be much longer than one for a small scheme.

- 2.23
- Design and Access Statements are required to accompany all planning, conservation and listed building applications, except in certain circumstances as set out on our website www.camden.gov.uk/planning. Our website also provides a template for Design and Access Statements and lists the information that each statement should contain. Further guidance on Access Statements is provided in CPG4 Protecting and improving quality of life (Access for all chapter).

Further information

General	By Design: Urban Design in the Planning System – Towards Better Practice, DETR/CABE, 2000 Design and Access Statements; how to read, write and use them, CABE, 2007
Tall Buildings	Guidance on tall buildings, English Heritage/CABE, 2007
Historic Environment	Understanding Place: conservation areas designation, appraisal and management (2011) Building in Context, English Heritage/CABE, 2002. Seeing History in the View (2011) Good Practice Advice 3- Settings and Views (2015)
Other	Royal Institute of Chartered Surveyors (RICS); and Royal Institute of British Architects (RIBA).

5 Roofs, terraces and balconies

KEY MESSAGES

Roof extensions fall into two categories:

- Alterations to the overall roof form; or
- Smaller alterations within the existing roof form, such as balconies and terraces.

When proposing roof alterations and extensions, the main considerations should be:

- The scale and visual prominence;
- The effect on the established townscape and architectural style;
- The effect on neighbouring properties

- 5.1 This guidance provides advice on roof alterations and extensions and on proposals for balconies and terraces. The Council will seek to ensure that roof alterations are sympathetic and do not harm the character and appearance of buildings or the wider townscape in the borough.
- 5.2 This guidance replates primarily to Development Policies DP24 Securing high quality design and DP25 Conserving Camden's Heritage.

When does this apply?

- 5.3 This guidance applies to all planning applications involving roof alterations, roof extensions, balconies and terraces, and is particularly relevant to residential properties.
- 5.4 For properties in conservation areas, reference should also be made to the relevant conservation area statements, appraisals and management plans. These describe the area and its special character and contain specific area-based advice.
- 5.5 Where buildings are listed, reference should also be made to planning guidance on Heritage.

Roof alterations and extensions – general principles

- 5.6 Proposals to alter and extend roofs fall into two categories: those that are accommodated within the existing roof form, such as dormer windows and roof lights, and those which alter the overall roof form, such as the construction of mansard roofs.
- 5.7 Additional storeys and roof alterations are likely to be **acceptable** where:
- There is an established form of roof addition or alteration to a terrace or group of similar buildings and where continuing the pattern of development would help to re-unite a group of buildings and townscape;

- Alterations are architecturally sympathetic to the age and character of the building and retain the overall integrity of the roof form;
- There are a variety of additions or alterations to roofs which create an established pattern and where further development of a similar form would not cause additional harm.

5.8 A roof alteration or addition is likely to be **unacceptable** in the following circumstances where there is likely to be an adverse affect on the skyline, the appearance of the building or the surrounding street scene:

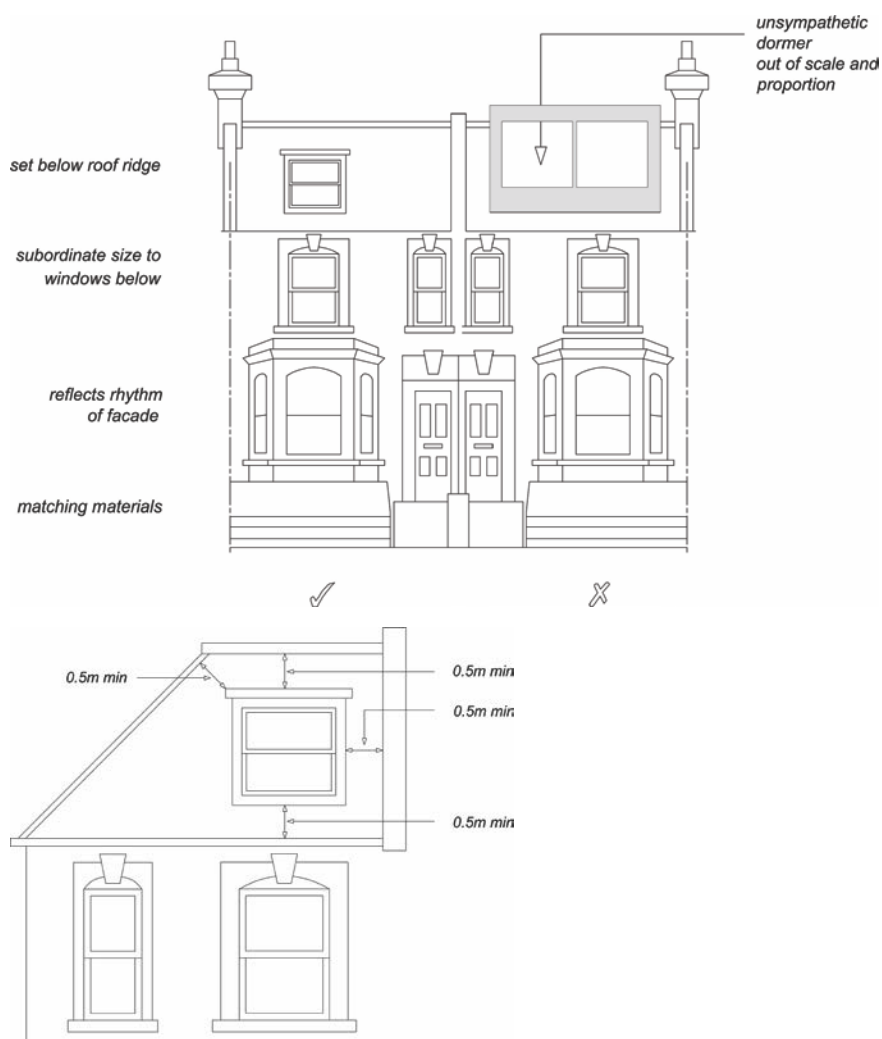
- There is an unbroken run of valley roofs;
- Complete terraces or groups of buildings have a roof line that is largely unimpaired by alterations or extensions, even when a proposal involves adding to the whole terrace or group as a co-ordinated design;
- Buildings or terraces which already have an additional storey or mansard;
- Buildings already higher than neighbouring properties where an additional storey would add significantly to the bulk or unbalance the architectural composition;
- Buildings or terraces which have a roof line that is exposed to important London-wide and local views from public spaces;
- Buildings whose roof construction or form are unsuitable for roof additions such as shallow pitched roofs with eaves;
- The building is designed as a complete composition where its architectural style would be undermined by any addition at roof level;
- Buildings are part of a group where differing heights add visual interest and where a roof extension would detract from this variety of form;
- Where the scale and proportions of the building would be overwhelmed by additional extension.

5.9 Materials, such as clay tiles, slate, lead or copper, that visually blend with existing materials, are preferred for roof alterations and repairs. Where roofs are being refurbished, original materials such as keyhole ridge tiles or decorative chimney stacks and chimney pots should be reused. Replacement by inappropriate substitutes erodes the character and appearance of buildings and areas.

5.10 Where the principle of an additional storey is acceptable, the more specific guidance set out below will apply. This advice is supplemented by more specific area-based advice as set out in the Council's conservation area statements, appraisals and management plans which set out our approach to preserving and enhancing such areas. Many of these appraisals and management plans are available for download on our website, or are available as hard copies from our Planning reception.

Roof dormers

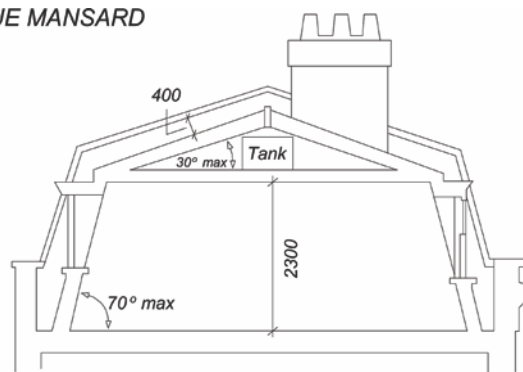
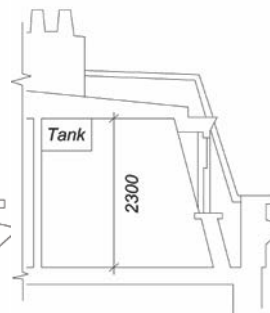
- 5.11 Alterations to, or the addition of, roof dormers should be sensitive changes which maintain the overall structure of the existing roof form. Proposals that achieve this will be generally considered acceptable, providing that the following circumstances are met:
- a) The pitch of the existing roof is sufficient to allow adequate habitable space without the creation of disproportionately large dormers or raising the roof ridge. Dormers should not be introduced to shallow-pitched roofs.
 - b) Dormers should not be introduced where they cut through the roof ridge or the sloped edge of a hipped roof. They should also be sufficiently below the ridge of the roof in order to avoid projecting into the roofline when viewed from a distance. Usually a 500mm gap is required between the dormer and the ridge or hip to maintain this separation (see Figure 4). Full-length dormers, on both the front and rear of the property, will be discouraged to minimise the prominence of these structures.
 - c) Dormers should not be introduced where they interrupt an unbroken roofscape.
 - d) In number, form, scale and pane size, the dormer and window should relate to the façade below and the surface area of the roof. They should appear as separate small projections on the roof surface. They should generally be aligned with windows on the lower floors and be of a size that is clearly subordinate to the windows below. In some very narrow frontage houses, a single dormer placed centrally may be preferable (see Figure 4). It is important to ensure the dormer sides (“cheeks”) are no wider than the structure requires as this can give an overly dominant appearance. Deep fascias and eaves gutters should be avoided.
 - e) Where buildings have a parapet the lower edge of the dormer should be located below the parapet line (see Figure 4).
 - f) Materials should complement the main building and the wider townscape and the use of traditional materials such as timber, lead and hanging tiles are preferred.

Figure 4. Dormer windows

- 5.12 See CPG2 Housing (Residential development standards chapter) for further information, particularly the section on ceiling heights.
- 5.13 The presence of unsuitably designed new or altered dormers on neighbouring properties will not serve as a precedent for further development of the same kind.

Mansard Roofs

- 5.14 Mansard roofs are a traditional means of terminating a building without adding a highly visible roof. This form is acceptable where it is the established roof form in a group of buildings or townscape.

Figure 5. Mansard Roofs**TRUE MANSARD****FLAT TOP MANSARD****True Mansard**

Lower slope is at a steeper angle than the upper, and the upper slope is visible

Flat topped Mansard

Upper slope of a pitch below 5° or totally flat

- 5.15 Mansard roofs are often the most appropriate form of extension for a Georgian or Victorian dwelling with a raised parapet wall and low roof structure behind. Mansard roofs should not exceed the height stated in Figure 5 so as to avoid excessive additional height to the host building. They are often a historically appropriate solution for traditional townscapes. It should be noted that other forms of roof extensions may also be appropriate in situations where there is a strong continuous parapet and the extension is sufficiently set back or where they would match other existing sympathetic roof extension already in the terrace.

Parapet wall

A low wall or railing that is built along the edge of a roof, balcony or terrace for protection purposes.

Cornice

The topmost architectural element of a building, projecting forward from the main walls, originally used as a means of directing rainwater away from the building's walls.

- 5.16 The three main aspects to consider when designing a mansard roof extension are its:
- pitches and profile;
 - external covering; and
 - windows.
- 5.17 The lower slope (usually 60-70°) should rise from behind and not on top of the parapet wall, separated from the wall by a substantial gutter. Original cornice, parapet and railing details should be retained and where deteriorated or lost, should be incorporated into the design of new roof extensions. Visible chimney stacks should be retained and increased in height, where necessary. Only party walls with their chimney stacks and windows should break the plane of the roof slope, and should be accommodated in a sensitive way and be hidden as far

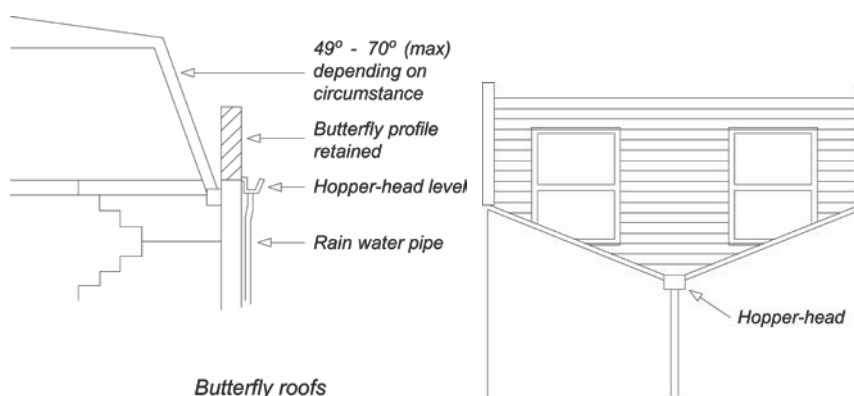
as is possible. (See also guidance on dormer windows and roof lights). Dormer windows or roof lights should be confined to the lower slope.

- 5.18 Roofing materials should be of the highest quality because of their significant visual impact on the appearance of a building and townscape and the need to be weather-tight. Natural slate is the most common covering and this should be laid with a traditional overlap pattern. Artificial slate or felt are not acceptable roof coverings in conservation areas. Where a roof in a conservation area is being re-covered, the choice of covering should replicate the original, usually natural slate or clay tile.

Valley or Butterfly roofs

- 5.19 On buildings with a 'valley' or 'butterfly' roof if a mansard extension is considered acceptable in terms of the guidance in paragraphs 5.7 and 5.8 of this chapter, then the parapet should be retained. The new roof should start from behind the parapet at existing hopper-head level, forming a continuous slope of up to a maximum of 70° (see Figure 6). In this context, it is usually more appropriate to introduce conservation-style roof lights, which are flush with the roof slope, rather than dormers. Terraces and additional railings will not usually be acceptable.

Figure 6. Butterfly roofs



Hopper head level

The level at which the 'hopper head' (a square or funnel shaped receptacle to connect rainwater or waste pipes to a down-pipe) is positioned.

Other roof additions

- 5.20 On some contemporary buildings a less traditional form of roof addition may be more appropriate. In such cases, proposals should still have regard for the following general principles:
- The visual prominence, scale and bulk of the extension;
 - Use of high quality materials and details;

- Impact on adjoining properties both in terms of bulk and design and amenity of neighbours, e.g. loss of light due to additional height;
- Sympathetic design and relationship to the main building.

Roof lights

- 5.21 Roof lights can have an adverse impact upon the character and appearance of buildings and streetscapes. This occurs where they are raised above the roof slope rather than being flush with the roof profile, or where they are an incompatible introduction into an otherwise uncluttered roofscape, or where they conflict with other architectural roof elements, e.g. gables and turrets.
- 5.22 Roof lights should be proportioned to be significantly subordinate both in size and number and should be fitted flush with the roof surface. Some properties, particularly listed buildings and those within conservation areas with prominent roof slopes may be so sensitive to changes that even the installation of roof lights may not be acceptable.

Balconies and terraces

- 5.23 Balconies and terraces can provide valuable amenity space for flats that would otherwise have little or no private exterior space. However, they can also cause nuisance to neighbours. Potential problems include overlooking and privacy, daylight, noise, light spillage and security.
- 5.24 Balconies and terraces should form an integral element in the design of elevations. The key to whether a design is acceptable is the degree to which the balcony or terrace complements the elevation upon which it is to be located. Consideration should therefore be given to the following:
- detailed design to reduce the impact on the existing elevation;
 - careful choice of materials and colour to match the existing elevation;
 - possible use of setbacks to minimise overlooking – a balcony need not necessarily cover the entire available roof space;
 - possible use of screens or planting to prevent overlooking of habitable rooms or nearby gardens, without reducing daylight and sunlight or outlook; and
 - need to avoid creating climbing opportunities for burglars.

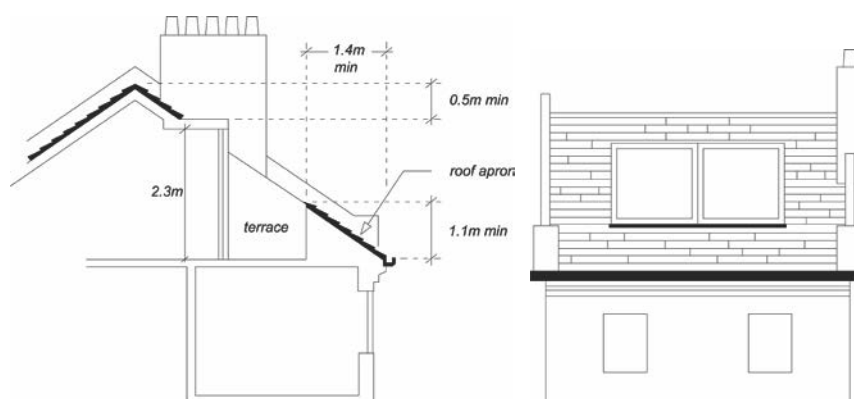
Roof Level

- 5.25 A terrace provided at roof level should be set back behind the slope of a pitched roof in accordance with Figure 7, or behind a parapet on a flat roof. A terrace should normally comply with the following criteria:
- The dimensions of the roof should be sufficient to accommodate a terrace without adversely affecting the appearance of the roof or the elevation of the property.
 - A terrace will only normally be acceptable on the rear of properties. It is normally inappropriate to set back a mansard to provide a terrace.

- It should not result in the parapet height being altered, or, in the case of valley/butterfly roofs, the infilling of the rear valley parapet by brickwork or railings.
- Any handrails required should be well set back behind the line of the roof slope, and be invisible from the ground.
- It should not result in overlooking of habitable rooms of adjacent properties.

- 5.26 When a terrace is provided within the slope of a pitch as in Figure 7, the adjacent tiles or slates should be kept unbroken above the eaves. The width of the terrace should be no wider than a dormer opening. A terrace may be acceptable behind an existing parapet. Where the height of the parapet is less than 1.1m, a railing will be required to fulfil Building Regulations.

Figure 7. Roof terraces



Building services equipment

- 5.27 New building services equipment and water tanks should be accommodated within the envelope of the building and its siting should be considered as part of the overall design (see chapter on Building services equipment in this CPG). Building services equipment includes, but is not limited to, heating and cooling systems, ventilation and extraction systems and associated ducting for electricity, communications and plumbing.

Green roofs

- 5.28 We encourage the incorporation of green roofs into schemes where appropriate in design terms (see chapter on Green roofs and walls in CPG3 Sustainability). You should contact the Council to confirm whether planning permission is required for green roofs. Planning permission is not required on flat roofs which are concealed by a parapet.

Solar panels

- 5.29 We encourage the installation of solar panels into schemes and for some properties these will not need planning permission. You should

contact the Council and visit the Planning Portal website www.planningportal.gov.uk to confirm whether planning permission is required for solar panels. Solar panels should be sited so as to maximise efficiency but minimise their visual impact and glare, for example utilising valley roofs and concealed roof slopes. Reference should be made to CPG3 Sustainability (Energy Efficiency: existing buildings and Energy Efficiency: new buildings chapters).

Camden Planning Guidance

Housing

London Borough of Camden

CPG 2



July 2015

CPG2 Housing

1	Introduction.....	5
2	Affordable housing and housing in mixed use development	7
3	Student Housing.....	48
4	Residential development standards.....	59
5	Lifetime Homes and Wheelchair Housing	69
6	Development involving net loss of homes.....	81

1 Introduction

What is Camden Planning Guidance?

- 1.1 We have prepared this Camden Planning Guidance (CPG) to support the policies in our Local Development Framework (LDF). This guidance is therefore consistent with the Core Strategy and the Development Policies, and forms a Supplementary Planning Document (SPD) which is an additional “material consideration” in planning decisions. The Council formally adopted CPG2 Housing on 6 April 2011 following statutory consultation. The Camden Planning Guidance documents (CPG1 to CPG8) replace Camden Planning Guidance 2006.
- 1.2 This document (CPG2 Housing) has been subject to two updates:
- 4 September 2013 following statutory consultation in November to December 2012, and
 - 17 July 2015 following statutory consultation in March to April 2015.
- Details on these updates and the consultation process are available at camden.gov.uk/cpg.
- 1.3 The Camden Planning Guidance covers a range of topics (such as design, sustainability, amenity and planning obligations) and so all of the sections should be read in conjunction, and within the context of Camden’s LDF.

Housing in Camden

- 1.4 A key priority for the Council is to ensure that everyone has the opportunity to live in a decent home at a price they can afford in a community where they want to live. Camden is a very popular place to live, which means that average house prices are high and that the demand for affordable housing far outstrips supply.
- 1.5 The Local Development Framework seeks to make full use of Camden’s capacity for housing to establish a plentiful supply and broad range of homes. In addition to meeting or exceeding Camden’s housing targets, the Local Development Framework seeks to ensure that new homes are built to a high standard and provide well-designed accommodation that meets the needs of a range of occupiers.

What does this guidance cover?

- 1.6 This guidance provides information on all types of housing development within the borough. It provides specific guidance on:
- Affordable housing
 - Student housing
 - Residential Space standards
 - Lifetime homes and wheelchair housing
 - Development involving net loss of homes
- 1.7 It highlights the Council's requirements and guidelines which support the Local Development Framework policies:
- CS1 – Distribution of growth
 - CS5 – Managing the impact of growth and development
 - CS6 – Providing quality homes
 - CS14 – Promoting high quality places and conserving our heritage
 - DP1 – Mixed use development
 - DP2 – Making full use of Camden's capacity for housing
 - DP3 – Contributions to the supply of affordable housing
 - DP4 – Minimising the loss of affordable housing
 - DP5 – Homes of different sizes
 - DP6 – Lifetime homes and wheelchair housing
 - DP7 – Sheltered housing and care homes for older people
 - DP8 – Accommodation for homeless people and vulnerable people
 - DP9 – Student housing, bedsits and other housing with shared facilities
 - DP26 – Managing the impact of development on occupiers and neighbours

4 Residential development standards

KEY MESSAGE

Development should provide high quality housing that provides secure, well-lit accommodation that has well-designed layouts and rooms.

- 4.1 This guidance relates to Camden Core Strategy policies CS5 – *Managing the impact of growth and development*, CS6 – *Providing quality homes* and CS14 – *Promoting high quality places and conserving our heritage* plus Camden Development Policy DP26 – *Managing the impact of developers on occupiers and neighbours*. In addition, homes of all tenures should meet lifetime homes standards in accordance with Development Policy DP6 and the CPG on Lifetime homes and wheelchair housing.

TENURE

Describes the ownership of a home and the relationship between a household and their home i.e. owner-occupied, shared ownership, private rented, social rented, etc.

- 4.2 The '**Access for all**' section in CPG6 **Amenity** sets out the Council's approach to providing buildings and spaces that are accessible to everyone. Reference should also be made to the **Design Excellence** section of CPG1 **Design** and to other sections of CPG2 **Housing**.
- 4.3 The space standards in this guide are minimum requirements and should not be taken as maxima. Housing which exceeds the minimum standards will always be encouraged.
- 4.4 This guidance applies to planning applications involving the provision of residential accommodation and residential conversions, extensions and change of use. In cases involving residential conversions of listed buildings a sensitive and imaginative approach to achieving these standards may need to be taken.

MAYOR'S HOUSING SPG

The Mayor has prepared a draft replacement housing SPG. The Mayor's draft SPG supports the emerging replacement London Plan, which makes provision for residential standards to be applied across all tenures of development. Both the draft replacement London Plan and the draft replacement Housing SPG are expected to be adopted in autumn 2011.

In addition, we anticipate that housing with public subsidy in London will have to comply with the Mayor's London Housing Design Guide from April 2011 (published in interim form in August 2010). The Mayor is seeking to adopt the London Housing Design Guide standards for all housing tenures in London through the London Plan.

- 4.5 Camden's Core Strategy indicates that we will seek a range of self-contained homes to meet identified dwelling size priorities. These

priorities are set out in detail in our Development Policies document – see particularly policy DP5 and paragraph 5.4.

Guidance on residential development standards

General principles

- 4.6 All residential developments in the Borough are required to be designed and built to create high quality homes:
- All newly created dwellings for households of 2 or more people should be self-contained (applies to homes in Use Class C3, but does not apply to care homes for elderly or vulnerable people, student housing, bedsits, or other Houses in Multiple Occupation (HMOs)).
 - Each dwelling should have its own secure private entrance which leads either directly from the street or off a common entrance hall – the number of entrances off one corridor should be limited.

SELF-CONTAINED

Accommodation with its own kitchen, bathroom and toilet for the sole use of occupants behind a separate front door.

HOUSES IN MULTIPLE OCCUPATION (HMO)

HMOs are flats or houses permanently occupied by more than one household, where each household does not have exclusive access to all cooking, washing and toilet facilities behind a locked front door.

Layout

- 4.7 There should usually be a permanent partition between eating and sleeping areas. Kitchens and living rooms that are permanently separated are preferable. However, combined kitchen and living areas are considered acceptable as long as the floor area is sufficient to allow for the greater range of activities that will take place in them.

Rooms

- All rooms should be able to function for the purpose for the purpose for which they are intended.
- They should have an adequate size, shape, door arrangement, height, insulation for noise and vibration and natural lighting and ventilation.
- They should lead off a hallway or lobby so that it is possible to access any habitable room without passing through another habitable room, although Building Regulations Part B - Fire Safety allow inner rooms provided they meet certain criteria.

HABITABLE ROOM

A room that is capable of being used as primary living space. Generally consists of living rooms, dining rooms, large kitchen/diners and large bedrooms

Flexible construction/layout

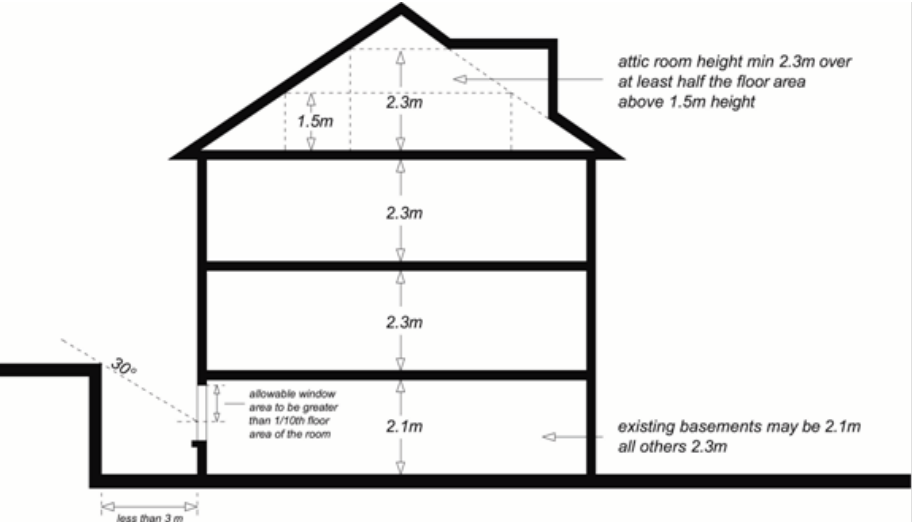
- 4.8 In addition, wherever practical dwellings should be designed to enable greater flexibility in construction design so that they can be capable of some form of extension or adaptation in order to accommodate changing lifestyles and family needs or other social use.
- 4.9 For example design features that could be considered, include:
- open plan layouts or generic layouts/floor plans;
 - avoiding load bearing internal walls;
 - easily accessible services and utilities e.g. a central accessible core or accessible floor/ceiling cavity.
 - For further examples see: By design urban design in the planning system: towards better practice:
www.communities.gov.uk/publications/planningandbuilding/bydesignurban by DETR (2000) (accessed April 2011).

Internal space standards

Ceiling heights

- 4.10 All habitable rooms should have minimum headroom of 2.3 metres. The exceptions are habitable rooms in existing basements, which may have 2.1 metres headroom, and habitable rooms in attics which should have a minimum room height of 2.3 metres over at least half of the floor area (not including any floor space where the ceiling height is less than 1.5 metres). See Figure 9.
- 4.11 Any floor area where the ceiling height is less than 1.5 metres will not count towards the habitable floorspace. We will also consider the suitability of floor to ceiling heights in relation to context of building and how size of windows and floor to ceiling heights impact design. Please also refer to CPG1 **Design** (see particularly the sections on '**Design Excellence**' and '**Roofs, terraces and balconies**') and CPG4 **Basements**.

Figure 9. Ceiling heights and natural light for basements



Space and room sizes

- 4.12 Although planning cannot control the precise internal layout of individual proposals, it is important to ensure that dwellings are capable of providing a suitable layout and adequate room sizes that reflect the use and type of accommodation. The Council will be flexible in the application of these guidelines in order to respond to site-specific circumstances.
- 4.13 The Council has set minimum space standards to ensure rooms are large enough to take on varying uses. Space standards relate to the occupancy of a home rather than number of bedrooms and the developer will be required to state the number of occupants each dwelling has been designed to accommodate. The occupancy of housing at the time of its first occupation is not a reliable prediction of future levels of occupancy over the lifetime of a home. The only sensible assessment of occupancy is therefore the designed level of occupancy.
- 4.14 The overall internal floorspace in new self-contained dwellings (excluding communal lobbies and staircases) should normally meet or exceed the minimum standards set out in the following table.

Number of Persons	1	2	3	4	5	6
Minimum floorspace (sq m)	32	48	61	75	84	93

- 4.15 For dwellings designed for more than 6 people, allow approximately 10sq m. per extra person. In order to successfully to provide ease of movement and storage space for wheelchair users, the council will normally wheelchair housing dwellings to exceed the minimum floorspace standards. Please also refer to the section on ‘Lifetime homes and wheelchair housing’ in this CPG document.
- 4.16 The Council will expect bedrooms to meet or exceed the following minimum sizes:

- First and double bedrooms - 11.0 sq m
- Single bedrooms - 6.5 sq m

4.17 The Council's Private Sector Housing Team has produced specific minimum standards for Houses in Multiple Occupation (HMO's) and hostels which includes guidance on room sizes and facilities. Schemes for bedsits, shared houses and flats and hostels should be prepared with reference to these standards. These can be viewed on Camden's website www.camden.gov.uk/housing (see Private Sector Housing/ Private Housing Standards pages).

4.18 Self-contained homes providing a floorspace below the minimum standards may be considered in exceptional circumstances, for example to reduce the cost of Intermediate Housing to the occupier, however their acceptability will depend on other aspects of the development proposed. Sympathetic consideration may be given where a proposal meets a number of the criteria below:

- Dwellings are targeted at, and affordable to, groups identified by the Borough as being in need.
- External amenity space is provided
- A limited number of dwellings are accessed from each entry point and corridor (ideally 8 or fewer, unless controlled by a concierge or a CCTV system allowing clear facial identification).
- Security controlled access is provided where a larger number of units are accessed from one point.
- Where cluster flats are provided in response to a demonstrable demand (i.e. there are good indications that properties will not be hard to let to the targeted tenants), a limited number of flats are clustered into each dwelling (ideally 8 or fewer) (cluster flats are bedsits with a communal kitchen/eating area).
- A laundrette or communal laundry is provided (sufficient to cater for forecast resident demand at periods of peak usage) where individual dwellings cannot accommodate a washing machine - subject to keeping service and management charges at an acceptable level. The Council will take into account any existing commercial laundrettes that would be convenient for residents.

Storage and utility spaces

4.19 All accommodation should have sufficient internal storage space to meet the likely needs and requirements of potential occupiers. Dwelling layouts should make suitable provision:

- for washing machines and drying clothes;
- a storage cupboard with a minimum floor area of 0.8 sq m should be provided for 1- and 2-person dwellings;
- for each additional occupant, a minimum of 0.15 sq m storage area should be provided;

- storage for bicycles and prams should also be provided, located at the ground or lowest level of the dwelling, preferably accessed from a hall or lobby area;
- for waste and recycling bins, reference should also be made to the section '**Waste and Recycling Storage**' in CPG1 **Design**.

Daylight, sunlight and privacy

- 4.20 Residential developments should maximise sunlight and daylight, both within the new development and to neighbouring properties whilst minimising overshadowing or blocking of light to adjoining properties. Maximising sunlight and daylight also helps to make a building energy efficient by reducing the need for electric light and meeting some of the heating requirements through solar gain. The orientation of buildings can maximise passive solar gain to keep buildings warm in winter and cool in summer.

PASSIVE SOLAR GAIN

Design to optimise the amount of the sun's energy that heats and lights a building naturally.

- 4.21 All habitable rooms should have access to natural daylight. Windows in rooms should be designed to take advantage of natural sunlight, safety and security, visual interest and ventilation. Developments should meet site layout requirements set out in the Building Research Establishment (BRE) Site Layout for Daylight and Sunlight – A Guide to Good Practice (1991).
- 4.22 Overall the internal layout design should seek to ensure the main living room and other frequently used rooms are on the south side and rooms that benefit less from sunlight (bathrooms, utility rooms) on the north side. Kitchens are better positioned on the north side to avoid excessive heat gain.

Minimum requirements:

- 4.23 In particular the following minimum requirements need to be met to avoid the unacceptable loss of daylight and/or sunlight resulting from a development, including new build, extensions and conversions. For example:
- Each dwelling in a development should have at least one habitable room with a window facing within 30 degrees of south in order to make the most of solar gain through passive solar energy;
 - Rooms on south facing walls should always have windows, south facing windows and walls should be designed, sized and/or shaded in summer to prevent overheating. Appropriate shading might be achieved by:
 - mature deciduous trees located so as to shade the structure
 - eaves or overhangs that protect from sun that is high in the sky only

- external shutters or blinds that can be operated by the occupant;
- External shading should be provided for western facing windows and outdoor spaces to minimise overheating in summer. Deciduous trees provide the best shade for this purpose;
- Windows on north facing walls should be sized to prevent heat loss but allow sufficient daylight;
- All habitable rooms, including basements, must have an external window with an area of at least 1/10 of the floor area of the room;
- An area of 1/20 of the floor area of the room must be able to be opened to provide natural ventilation;
- Windows to atriums will be acceptable as external windows in exceptional circumstances only;
- Passive ventilation should be favoured where possible and mechanically assisted ventilation should be silent in operation.

4.24 For further guidance reference should be made to 'The Code for Sustainable Homes' which provides technical guidance on designing for adequate internal daylighting and requires daylight levels to be calculated using the BRE assessment method. Reference should also be made to CPG3 **Sustainability**.

Privacy and security

- 4.25 House and flat developments should be arranged to safeguard the amenity and privacy of occupiers and neighbours.
- New development, extensions, alterations and conversions should not subject neighbours to unacceptable noise disturbance, overlooking or loss of security.
 - Developments should seek to improve community safety and crime prevention. This may include:
 - designing developments so that open spaces are overlooked by windows, avoiding dark secluded areas and buildings face onto streets.
 - obtaining Secured by Design certification – please refer to the '**Designing safer environments**' section of CPG1 **Design**.

Basements

- 4.26 All rooms within a basement should be able to function for the purpose of which they are intended. They should have an adequate size, shape, door arrangement, and height, insulation from noise and vibration, and access to natural lighting, ventilation and privacy (similar to the standards set out above). Four key considerations are set out here.
- Natural light - to ensure that adequate natural light is provided to habitable rooms, walls or structures (including the sides of lightwells) should not obstruct windows by being closer than 3 metres. Where

this is not achievable, a sufficient proportion of the glazing should be above the point on the window(s) from which a line can be drawn at 30° above the horizontal to pass the top of obstruction. The glazed area above the point should total not less than 10% of the floor area of the room. See Figure 9.

- Forecourt parking – nearby vehicles can also restrict light to basements, and consideration should be given to any further obstruction from vehicles parked on the forecourt that may present a barrier to light serving basement windows.
- Means of escape - basements should be provided with either a door or suitably sized window allowing access to a place of safety that gives access to the external ground level, or with a protected escape route within the building leading to a final exit at ground level.
- Lightwells - stairs, ladders and gates in any railings around a lightwell that are required for means of escape should be designed to be as discreet as possible and should have regard to the character of the building and surrounding area.

4.27 Further detailed guidance on basements is contained within CPG4 **Basements**.

Noise and soundproofing

4.28 The layout and placement of rooms within the building should be carefully considered at an early stage in the design process to limit the impact of external noise on bedrooms and living rooms. The impact of noise should also be considered in the placement of private external spaces. Detailed guidance is provided in the '**Noise and vibration**' section of CPG6 **Amenity** and . The following requirements must be met.

- Internal layouts of dwellings should be designed to reduce the problem of noise disturbance between adjoining properties by using 'vertical stacking', i.e. placing living room above living room and bedrooms above bedrooms etc.
- Bedrooms should not be placed above, below or next to potentially noisy rooms, circulation areas of adjacent dwellings or noisy equipment, such as lifts.
- Windows should be located away from busy roads and railway lines/tracks to minimise noise and pollution and vibration.
- The layout of adjacent dwellings and the location of lifts, plant rooms and circulation spaces should seek to limit the transmission of noise to sound sensitive rooms within dwellings.
- Party walls and floors of flats created by conversion must be adequately soundproofed.
- All housing should be built with acoustic insulation and tested to current Building Regulations standards, but acoustic insulation should not be relied upon as the only means of limiting noise.

- Minimum levels of soundproofing are set out in the Building Regulations Part E - Resistance to the passage of sound. Levels of sound insulation above the minimum are encouraged.
- Further advice is given in the London Plan SPG on Sustainable Design and Construction

Outdoor amenity space

- 4.29 Outdoor residential amenity space can be provided in the form of private garden space, balconies, terraces, roof gardens or as communal amenity space. Where practical the following requirements should be met.

Private outdoor amenity space:

- All new dwellings should provide access to some form of private outdoor amenity space, e.g. balconies, roof terraces or communal gardens.
- Private gardens should be allocated to family dwellings.
- Where provided, gardens should receive adequate daylight, even in the winter.
- The access to private amenity space should be level and should be from the main living space.
- Balconies should have a depth of not less than 1.5 metres and should have level access from the home.
- Balconies and terraces should be located or designed so that they do not result in the loss of privacy to existing residential properties or any other sensitive uses.
- Balconies should preferably be located next to a dining or living space and should receive direct sunlight (they can be designed to project from main building line or be recessed).

- 4.30 In some instances, it is accepted that existing buildings may not be able to provide balconies or roof terraces, however, external amenity space i.e. access to communal gardens should still be provided where possible. See CPG1 **Design** for further guidance on '**Roofs, terraces and balconies**'.

Communal amenity space:

- Space should meet the requirements of the occupiers of the building and be wheelchair accessible. For example, if there are a large proportion of family units, child and young person's facilities should be included in the communal space. The council will use the Mayor of London's 'Providing children's and young people's play and informal recreation SPG' (March 2008) when calculating requirements: <http://static.london.gov.uk/mayor/strategies/sds/spg-children-recreation.jsp> (accessed April 2011).
- Space should be well designed so that residents have a sense of ownership of the space, which will encourage its use.

- Space should be located sensitively so that it is overlooked by surrounding development and secure for residents.
- Space should be designed to take advantage of direct sunlight.
- Space should be designed to minimise disturbance to occupiers and neighbours, e.g. by being sheltered from busy roads, by being located in the rear of the buildings, back to back, behind perimeter blocks or in courtyards.
- Landscaping and facilities provided for the space should be of a high quality and have suitable management arrangements in place.

Further information

GLA Housing Design Guide	The Mayor's London Housing Design Guide from April 2011 (August 2010) provides detailed guidance on housing design in London http://www.london.gov.uk/who-runs-london/mayor/publications/housing/london-housing-design-guide (accessed April 2011)
Lifetime Homes and Wheelchair Housing Standards	In addition to the above residential standards, most residential schemes will also need to meet specific requirements for Lifetime Homes and Wheelchair Housing Standards: <ul style="list-style-type: none"> • For further guidance on how to meet Camden's requirements refer to CPG on Lifetime homes and wheelchair housing. • For good practice guidance specifically on Lifetime Homes www.lifetimehomes.org.uk
Daylight and Sunlight	For good practice advice on overshadowing and providing daylight and sunlight to buildings, refer to the widely used BRE Report "Site Layout Design for Daylight and Sunlight; a guide to good practice". It provides specific guidance on: <ul style="list-style-type: none"> • Providing good daylighting and sunlighting within a new development • Safeguarding sunlight and daylight within existing buildings nearby • Protection of daylighting of adjoining land for future development • Passive solar site layout • Sunlighting of gardens and amenity areas
Sustainability	The Council will require all that all buildings are designed to be sustainable, thus reference should also be made to CPG3 Sustainability , in particular, the 'Code for Sustainable Homes' sub-section in 'Sustainability assessment tools'.

Camden Planning Guidance

Town Centres, Retail & Employment

London Borough of Camden

CPG 5



September 2013

CPG5 Town Centres, Retail and Employment

1	Introduction	5
2	Retail uses	7
3	Town centres.....	9
4	Central London Area food, drink and entertainment, specialist and retail uses.....	31
5	Small shops.....	71
6	Food, drink and entertainment uses.....	77
7	Employment sites and business premises	83
8	Appendices	89

1 Introduction

What is Camden Planning Guidance?

- 1.1 We have prepared this guidance to support the policies in our Local Development Framework (LDF). This guidance is therefore consistent with the Camden Core Strategy and Camden Development Policies, and is a formal Supplementary Planning Document (SPD) which is an additional “material consideration” in planning decisions. The Council formally adopted CPG5 – Town centres, retail and employment on 7 September 2011 following statutory consultation. This document was updated on 4 September 2013 following statutory consultation to include Section 4 on the Central London Area food, drink and entertainment, specialist and retail uses. The Camden Planning Guidance documents (CPG1 to CPG8) replace Camden Planning Guidance 2006.
- 1.2 The Camden Planning Guidance covers a range of topics (such as housing, sustainability, amenity and planning obligations) and so all of the sections should be read in conjunction with, and within the context of, Camden’s other LDF documents.

What does this guidance cover?

- Retail uses;
 - Town centres;
 - Central London local Areas;
 - Central London frontages;
 - Neighbourhood centres;
 - Small shops;
 - Controlling the impact of food, drink and entertainment uses; and
 - Employment sites and business premises.
- 1.3 This guidance supports the following Local Development Framework policies:

Camden Core Strategy

- CS5 Managing the impact of growth and development;
- CS7 Promoting Camden’s centres and shops, and policies;
- CS8 Promoting a successful and inclusive economy and Development Policy
- CS9 Achieving a successful Central London

Camden Development Policies

- DP10 Helping and promoting small and independent shops;
- DP11 Markets;
- DP12 Supporting strong centres and managing the impact of food, drink, entertainment and other town centre uses;

- DP13 Employment premises and sites; and
- DP26 Managing the impact of development on occupiers and neighbours.

7 Employment sites and business premises

KEY MESSAGES

- Camden has a very restricted supply of sites and premises suitable for light industrial, storage and distribution uses.
- We will categorise sites according to their characteristics to determine which sites and premises should be retained.
- In instances where we accept the principle of redevelopment of an employment site, our priority will be to secure permanent housing and/or community uses.

7.1 This guidance supports Camden Core Strategy policy CS8 *Promoting a successful and inclusive economy* and policy DP13 *Employment premises and sites* in the Camden Development Policies. These policies work together to provide our approach to the provision and protection of employment sites and business premises.

7.2 We will protect existing employment sites and premises that meet the needs of businesses and employers. This guidance explains the circumstances when we will consider alternative uses for an employment site. It also provides more information on marketing requirements and our approach to Hatton Garden, the Industry Area and mixed use developments.

Offices

7.3 Camden's Core Strategy sets out the projected demand and planned supply of office floorspace in the borough. We expect the supply of offices to meet the projected demand over the plan period and as a result we may allow a change from B1(a) offices to another use in some circumstances, such as older office premises or buildings that were originally built as residential dwellings. Our priority is for the replacement use to be permanent housing or community use. This approach is in line with policy DP13 *Employment premises and sites* in the Camden Development Policies.

7.4 There are a number of considerations that we will take into account when assessing applications for a change of use from office to a non-business use, specifically:

- the criteria listed in paragraph 13.3 of policy DP13 of the Camden Development Policies;
- the age of the premises. Some older premises may be more suitable to conversion;
- whether the premises include features required by tenants seeking modern office accommodation;

- the quality of the premises and whether it is purpose built accommodation. Poor quality premises that require significant investment to bring up to modern standards may be suitable for conversion;
- whether there are existing tenants in the building, and whether these tenants intend to relocate;
- the location of the premises and evidence of demand for office space in this location; and
- whether the premises currently provide accommodation for small and medium businesses.

7.5 When it would be difficult to make an assessment using the above, we may also ask for additional evidence in the form of a marketing assessment. Paragraph 6.18 below provides more information on marketing.

Hatton Garden

7.6 As set out in the Core Strategy policy CS8 and policies DP1 and DP13 of the Camden Development Policies, the Council takes a different approach to development in Hatton Garden. Here the conversion of office premises to residential or D1 use will only be permitted where 50% of the floorspace is provided as affordable B1c space for use as jewellery sector workshops. Where proposals involve an increase in B1a or residential floorspace then 50% of the uplift must be provided as jewellery sector B1c space. In addition, the conversion of office premises will only be permitted where it can be demonstrated that they have been vacant and marketed for at least two years. Paragraph 6.18 below provides more information on what we expect to be included in any marketing exercise.

7.7 Where it has been agreed by the Council that the provision of jewellery workshop space is not possible, we will still require the provision of residential floorspace in line with Policy DP1 of the Camden Development Policies. In addition we will require a financial contribution towards the support of the jewellery industry. The level of contribution will be related to the area of workspace that would otherwise have been expected. Where jewellery sector workshop space is provided, we will require the space to be marketed at rents comparable to average rents paid by existing jewellery manufacturers for comparable premises in Hatton Garden. Please see CPG 8 – Planning Obligations for our detailed approach.

Light industrial, industrial, storage and distribution

7.8 Camden has a very restricted supply of sites and premises suitable for light industrial, storage and distribution uses. This means that there is a high level of demand for the remaining sites and that the majority of sites are well occupied and able to secure relatively high rents as long as they have good access and separation from conflicting premises.

- 7.9 We have identified three main categories of sites and premises in the borough:

Category 1

- 7.10 Sites in this category provide the highest quality accommodation. Typically, they provide:
- purpose built accommodation;
 - predominantly single storey premises;
 - clear, high ceiling heights;
 - high loading bays and doors (min 5.5m or 18ft high);
 - access for large delivery and servicing vehicles both into and around the site;
 - 24 hour operation with unrestricted loading access; and
 - minimal risk that the 24-hour operation will adversely harm the amenity of neighbouring properties.



Category 2

- 7.11 The majority of Camden's industrial stock falls into Category 2. They usually have a selection of the following characteristics:
- good access for servicing and delivery;
 - slightly more restricted hours of operation than Category 1 sites;
 - roller shutter doors;
 - clear, high floor to ceiling heights (3-5m);
 - lots of natural light;
 - level access – normally ground floor;
 - flexible neighbouring uses;
 - limited number of upper floors with goods lift access; and
 - some off street parking.

Category 3

- small, isolated premises;
- poor access - narrow streets, small doors, steps;
- no goods lifts;

- little or no space for servicing;
- incompatible neighbouring uses (most often residential); and
- lower ground or basement level.

- 7.12 Category 1 sites are rare in Camden and will always be protected. Category 2 sites are more common in Camden and will usually be protected unless there is very strong marketing evidence (see below for details of our marketing expectations) to show that they are no longer suitable. The Business Premises Study 2011 advises that most sites within categories 1 and 2 can be marketed and let successfully. Category 3 sites are heavily compromised and may not be suitable for continued industrial use when they become empty or need significant investment, although they could be suitable for office B1(a) space.
- 7.13 We will use these categories to determine which sites and premises should be retained and which can be released for redevelopment. The characteristics of categories 1 and 2 will also be used to guide the design of new business premises.

Refurbishment and improvements

- 7.14 Many industrial buildings only require a small amount of investment to maintain them or to bring them back into a reasonable condition. As long as the site has good access other factors, such as the age of a building, are irrelevant for most occupiers as the specification for an industrial unit has not changed in many years.

New industrial premises

- 7.15 The characteristics that make new industrial premises successful are similar to categories 1 and 2 above. Ideally, new space should resemble category 1 as closely as possible. The most important features are good delivery/servicing access, separation from other uses, freedom to operate at all times and a 50-70% site coverage. Where mixed use development is planned employment and residential uses should normally be provided in separate blocks. Whilst it may be difficult to achieve all of these features in Camden, we will expect new developments to include as many as practically possible.

Industry area

- 7.16 Camden's Industry Area is one of the few areas where there is a concentration of industrial, storage and distribution uses (within classes B1, B2, B8 or related Sui Generis) where no other uses prejudice the operation of business in the area.
- 7.17 As stated in Core Strategy Policy CS8 and in paragraph 8.15, the Industry Area will be safeguarded by resisting any proposals which jeopardise the continued use of sites for industrial, storage and distribution purposes. This includes proposals which would introduce any of the following uses: residential, student accommodation, community facilities, retail, food, drink or entertainment premises.

Marketing

- 7.18 We will require evidence of a marketing exercise for the loss of employment uses, in line with Core Strategy Policy CS8 and policy DP13 of the Camden Development Policies. As a minimum, we will expect marketing exercises to include the following:
- Use of a reputable local or national agent with a track record of letting employment space in the borough;
 - A visible letting board on the property (constant throughout the marketing period);
 - Marketing material should be published on the internet, including popular online property databases such as Focus;
 - Continuous over at least 2 years from when the letting board is erected and the property is advertised online (i.e. not simply from when agents were appointed). We will consider shorter marketing periods for B1(a) office premises;
 - Advertised rents should be reasonable, reflecting market rents in the local area and the condition of the property;
 - Lease terms should be attractive to the market:
 - at least three years, with longer terms, up to five years or longer, if the occupier needs to undertake some works
 - and/or short term flexible leases for smaller premises which are appropriate for SMEs;
 - A commentary on the interest shown in the building, including any details of why the interest was not pursued; and
 - Where there is an existing employment use then we will require evidence that the tenant intends to move out.

Further information

- Camden Business Premises Study, 2011, Roger Tym and Partners
- The Demand for premises of London's SMEs, 2006, London Development Agency
- Industrial Capacity Supplementary Planning Guidance, 2008. Greater London Authority

8 Appendices

Appendix 1 - Properties located within Camden's Centres

- 8.1 The following tables contain all the addresses which are within Camden's centres.

Properties located within the town centre core retail frontages

Camden Town	Core frontages south: 38-224 Camden High Street (E side) 57-265 Camden High Street (W side) Core frontages north: 267- 289 Camden High Street (W side) East yard, Chalk Farm Road (W side) 226-250 Camden High Street (E side) 1-89 Chalk Farm Road (E side) 2-18a Haverstock Hill (E side)
Hampstead	Core frontages: 1-47 (N side) and 55-84 (S side) Hampstead High Street, 4-62 (E side) and 23-47 (W side) Heath Street, 1-10 and 12-16 Perrins Court, 1-17 (NW side) and 2-10 (SE side) Flask Walk
Kentish Town	Core frontages: 124-282 (E side) and 189-345 (W side) Kentish Town Road
Kilburn High Road	Core frontages: 42-218 Kilburn High Road (E side)
Swiss Cottage	Core frontages: 135-265 Finchley Road O2 Centre
West Hampstead	Core frontages: 176-280 West End Lane (E side)

Camden Planning Guidance

Amenity

London Borough of Camden

CPG 6



CPG6 Amenity

1	Introduction	5
2	Air quality	7
3	Contaminated land	15
4	Noise and vibration	19
5	Artificial light	25
6	Daylight and sunlight	31
7	Overlooking, privacy and outlook	37
8	Construction management plans	39
9	Access for all	45
10	Wind and micro-climate	53
11	Open space, outdoor sport and recreation facilities	59
12	Planning for healthy communities	79

1 Introduction

What is Camden Planning Guidance?

- 1.1 We have prepared this guidance to support the policies in our Local Development Framework (LDF). It is therefore consistent with the Camden Core Strategy and Development Policies, and is a formal Supplementary Planning Document (SPD) which is an additional “material consideration” in planning decisions. This guidance will replace Camden Planning Guidance 2006, updating advice where appropriate and providing new guidance on matters introduced or strengthened in the LDF.
- 1.2 Camden Planning Guidance covers a range of topics (such as design, housing, sustainability and planning obligations) and all of sections should be read in conjunction with, and within the context of, Camden’s other LDF documents.

Amenity in Camden

- 1.3 A key objective of the Camden Core Strategy is to sustainably manage growth so that it avoids harmful effects on the amenity of existing and future occupiers and to nearby properties.

What does this guidance cover?

- 1.4 This guidance provides information on all types of amenity issues within the borough and includes the following sections:
 1. Air quality
 2. Contaminated land
 3. Noise and vibration
 4. Artificial light
 5. Daylight and sunlight
 6. Overlooking, privacy and outlook
 7. Construction management plans
 8. Access for all
 9. Wind and micro-climate
 10. Open space, outdoor sport and recreation facilities
- 1.5 This guidance supports the following Local Development Framework policies:

Camden Core Strategy

- CS5 - Managing the impact of growth and development
- CS15 - Protecting and improving our parks and open spaces & encouraging biodiversity
- CS16 - Improving Camden’s health and well-being

Camden Development Policies

- DP26 - Managing the impact of development on occupiers and neighbours
- DP28 - Noise and vibration
- DP31 - Provision of, and improvements to, public open space and outdoor sport and recreation facilities
- DP32 - Air quality and Camden's Clear Zones

5 Artificial light

KEY MESSAGES:

When considering proposals for artificial lighting the Council will consider the:

- need for planning permission;
- need for the lighting;
- design of the lighting; and
- impacts on biodiversity.

5.1 This section provides guidance on the Council's approach to artificial lighting. This guidance should be read in conjunction with policy *DP26 Managing the impact of development on occupiers and neighbours* of the Camden Development Policies.

5.2 Artificial lighting has many benefits, however excessive or poorly designed lighting can be damaging to the environment and result in visual nuisance including by:

- Having a detrimental impact on the quality of life of neighbouring residents;
- Significantly changing the character of the locality;
- Altering wildlife and ecological patterns; and
- Wasting energy.



5.3 Nuisance often occurs due to glare and 'light spillage' because the lighting has been poorly designed.

5.4 *Planning Policy Statement 23 (PPS23): Planning and Pollution Control* enables the Council to take account of the possible obtrusive impact of

lighting and paragraph 3.25 of PPS23 permits us to use conditions or planning obligations to protect the environment.

WHAT IS LIGHT POLLUTION?

Light pollution is the term used to describe any adverse effect of artificial lighting. Light pollution includes:

- Glare - the uncomfortable brightness of a light source when viewed against a dark sky;
- 'Light trespass' – the spread of light spillage the boundary of the property on which a light is located; and
- 'Sky glow' - the orange glow we see around urban areas caused by a scattering of artificial light by dust particles and water droplets in the sky.

Will planning permission be required for lighting?

- 5.5 Structures supporting, and the installation of lighting equipment may require planning permission, especially if they are substantial or affect the external appearance of a building. Planning permission is not required for the carrying out of maintenance which affects only the interior of the building or does not materially affect the external appearance of the building. Temporary lighting schemes generally do not require planning permission.
- 5.6 Planning permission is normally required for:
- the erection of columns to support lighting or other similar structures;
 - the erection of substantial structures or installations that affect the external appearance of a property;
 - external lighting as part of an industrial or commercial scheme;
 - new lighting structures or works which are integral to other development requiring planning permission; and
 - illuminated advertisements, although there are some exceptions such as those indicating medical services and some commercial advertisements on the front of business premises (See Camden Planning Guidance 1 - Design).
- 5.7 You are advised to check with the Planning Service before installing any lighting scheme. You will need to provide the following details:
- Number of lights;
 - Likely lux output;
 - The height of the lighting columns (if applicable); and
 - The area to be lit.

In accordance with policy DP26 in Camden Development Policies, schemes that would cause harm to amenity will not be permitted.

What information should accompany a planning application?

- 5.8 Where planning permission for lighting schemes is required you will need to submit the information required by paragraph 5.7. We will also expect the submission of the following additional information:
- The design of lights and infrastructure;
 - A plan or plans showing layout of the lights, including orientation of the beams of light;
 - Lighting levels, lumen details, lamp type, wattage;
 - Control systems including types and location of sensors, times lighting will be on; and
 - The need for the lighting, that is, an explanation of what activity the lighting is supporting.

- 5.9 All light installations must be energy efficient and 'Dark Sky' compliant, thereby not causing obtrusive light pollution, glare or spillage (by reference to the British Astronomical Association Campaign for Dark Skies).

Lumen

This is a measurement of the light output from a light source.

Lux

This is a measurement of the light intensity falling on a surface.

Dark sky compliance

To design lighting schemes in order to avoid lighting that extends beyond its intended target and would be inefficient and waste energy. It also avoids glare and light in unwanted areas.

What should you consider when designing lighting?

General lighting requirements

- 5.10 To minimise obtrusive light you should follow the general principles taken from the Institution of Lighting Engineers, Guidance Notes for the Reduction of Obtrusive Light (2005):
- Lighting is to be directed downwards wherever possible to illuminate its target. If there is no alternative to up lighting, then the use of shields will help reduce the spill of light to a minimum. Up lighting is a particularly bad form of obtrusive light and contributes to sky glow.
 - Lighting is to be designed to minimise the spread of light near to, or above, the horizontal. Again, any light that shines above the horizontal line of the light adds to the sky glow effect.
 - Lighting should be designed to the correct standard for the task. Over-lighting is a cause of obtrusive light and also represents a waste of money and energy.
 - The main beam angle of all lights proposed directed towards any potential observer is to be kept below 70°. It should be noted that the higher the mounting height, the lower the main beam angle could be. This will help reduce the effect of glare and light spill on neighbouring dwellings, passing motorists, pedestrians, etc.
 - Lighting should be directed to minimise and preferably avoid light spillage onto neighbouring properties. Wherever possible use floodlights with asymmetric beams that permit the front glazing to be kept at, or near parallel to, the surface being lit.
 - The lights used should be the most efficient taking into account cost, energy use, and the purpose of the lighting scheme required. All lighting schemes should meet British Standards.
- 5.11 We will seek to ensure that artificial lighting is sited in the most appropriate locations to cause minimal disturbance to occupiers and wildlife, while still illuminating the intended area. This includes considering any occupiers located above the lighting source.

- 5.12 Consideration should be given to lighting associated with buildings of special historic and architectural interest in order to protect their special interest and that of the wider area. This applies both to the lighting of such buildings and the impact of the lighting installation when seen by day.

Lighting Infrastructure

- 5.13 The visual effect of lighting infrastructure when viewed in the daytime needs to be considered. These elements can include junction boxes, poles, brackets and cabling. The design, size and colours of the physical infrastructure needs to be carefully considered and should relate to the building it is located on.

Use

- 5.14 The design of lighting should be specific to the use it supports (e.g. for recreation facilities). Hours of lighting should be limited to the times needed to support the use (both in summer and winter) and be restricted through the use of timers and sensors where relevant (e.g. for security lighting).
- 5.15 The Council may seek to secure conditions to any planning permission in order to control the hours of operation of any approved lighting scheme.

Why do impacts on biodiversity need to be considered?

- 5.16 Artificial lighting can often impact on wildlife habitats, particularly where lighting is proposed in open spaces, for example to provide lighting for sports courts and pitches or to improve security (such as along Regents Canal). Artificial lighting can have particularly severe implications for the natural daily rhythms of a range of animals and plants, and therefore sites and habitats identified for their nature conservation value should not be adversely affected by lighting. (See the Local Development Framework Proposals Map for a list of nature conservation sites).
- 5.17 If your proposed lighting is located within or adjacent to areas of open space we will expect that any biodiversity impacts arising from the installation or operation of the lighting is mitigated. This may require a survey to identify if there are any nesting birds in the immediate vicinity or if it is close to an area where bats may hibernate or emerge at feeding time. This is particularly important if the operation of the lighting extends beyond dusk, which is roughly the time bats will come out to forage. See Camden Planning Guidance 3 – Sustainability for further information on our approach to protecting biodiversity.
- 5.18 You should contact Camden's Biodiversity Officer at an early stage to discuss measures to mitigate the impact of lighting schemes on biodiversity.

Further information

PPS23	Planning Policy Statement 23: Planning and Pollution Control. Office of the Deputy Prime Minister, November 2004. www.odpm.gov.uk
DEFRA	The Department of Food, Environment and Rural Affairs has published a number of documents on light pollution. These can be found at: http://www.defra.gov.uk/environment
Environment Act 1995	Available at the Stationary Office: www.opsi.gov.uk/acts/acts1995/Ukpga_19950025_en_1.htm

Useful Contacts

Camden Planning Service www.camden.gov.uk/planning

The Institution of Lighting Professionals www.theilp.org.uk promotes good practice and excellence in lighting schemes.

The Chartered Institute of Building Services Engineers www.cibse.org provides information on appropriate lighting designs and mechanisms.

6 Daylight and sunlight

KEY MESSAGES:

- We expect all buildings to receive adequate daylight and sunlight.
- Daylight and sunlight reports will be required where there is potential to reduce existing levels of daylight and sunlight.
- We will base our considerations on the Average Daylight Factor and Vertical Sky Component.

6.1 Access to daylight and sunlight is important for general amenity, health and well-being, for bringing warmth into a property and to save energy from reducing the need for artificial lighting and heating. The Council will carefully assess proposals that have the potential to reduce daylight and sunlight levels for existing and future occupiers.

6.2 This guidance relates to:

- Camden Core Strategy policy CS5 - *Managing the Impact of Growth and Development*;
- Core Strategy policy CS14 - *Promoting high quality places and conserving our heritage*; and
- Policy DP26 – *Managing the impact of development on occupiers and neighbours* of the Camden Development Policies.

DP26 sets out how the Council will protect the quality of life of building occupiers and neighbours by only granting permission for development that does not cause harm to amenity.

When will a daylight/sunlight report be required?

6.3 The Council expects that all developments receive adequate daylight and sunlight to support the activities taking place in that building.

6.4 A daylight and sunlight report should assess the impact of the development following the methodology set out in the most recent version of Building Research Establishment's (BRE) "Site layout planning for daylight and sunlight: A guide to good practice". Reports may be required for both minor and major applications depending on whether a proposal has the potential to reduce daylight and sunlight levels. The impact will be affected by the location of the proposed development and its proximity to, and position in relation to, nearby windows.

WHAT DOES THE COUNCIL REQUIRE?

The Council will require a daylight and sunlight report to accompany planning applications for development that has the potential to reduce levels of daylight and sunlight on existing and future occupiers, near to and within the proposal site.

Daylight and sunlight reports should also demonstrate how you have taken into consideration the guidance contained in the BRE document on passive solar design; and have optimised solar gain. Please refer to the BRE guidance on daylight and sunlight.

- 6.5 While we strongly support the aims of the BRE methodology for assessing sunlight and daylight we will view the results flexibly and where appropriate we may accept alternative targets to address any special circumstances of a site. For example, to enable new development to respect the existing layout and form in some historic areas. This flexible approach is at the Council's discretion and any exception from the targets will be assessed on a case by case basis.

Daylight

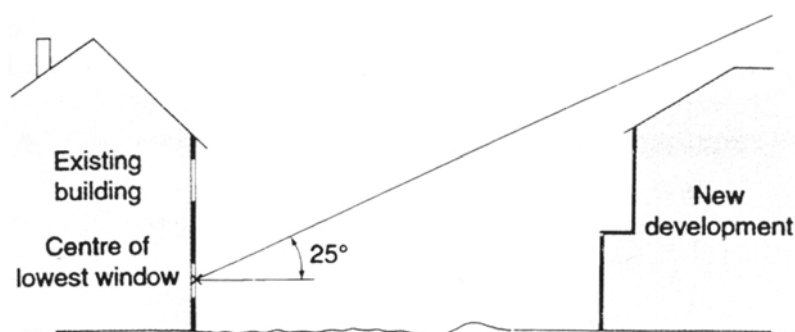
- 6.6 We will aim to minimise the impact of the loss of daylight caused by a development on the amenity of existing occupiers and ensure sufficient daylight to occupiers of new dwellings taking in account overall planning and site considerations. If your proposal will have an unreasonable impact on amenity the planning application will be refused. When assessing daylight issues, we will use the guidelines and methods contained in the BRE's *Site layout planning for daylight and sunlight: A guide to good practice*.
- 6.7 There are two quick methods that can be used to assess access to daylight:

Daylight to new development

- project a 25 degree line, starting 2m above ground level from a wall of your proposed development;
- if none of the existing surrounding buildings extend above this line, then there is potential for good daylighting to be achieved in the interior of your new development.

Daylight to existing development

- project a 25 degree line from the centre of the lowest window on the existing building;
- if the whole of your new development is lower than this line then it is unlikely to have a substantial effect on the daylight enjoyed by occupants in the existing building.

Section

Source: BRE, Site layout planning for daylight and sunlight: A guide to good practice.

- 6.8 For either test, if buildings extend above the 25 degree line a more detailed test needs to be carried out to fully assess either the loss of daylight in existing buildings or the level of daylight achievable in the new development. The two most common measurements of daylight of the more detailed test are the Vertical Sky Component (VSC) and the Average Daylight Factor (ADF).

Vertical Sky Component

The amount of light striking the face of a window

- 6.9 The Vertical Sky Component is expressed as a ratio of the maximum value of daylight achievable for a completely unobstructed vertical wall. The maximum value is almost 40%. This is because daylight hitting a window can only come from one direction immediately halving the available light. The value is limited further by the angle of the sun. This is why if the VSC is greater than 27% enough sunlight should be reaching the existing window. Any reduction below this level should be kept to minimum.
- 6.10 Windows to some existing rooms may already fail to achieve this target under existing conditions. In these circumstances it is possible to accept a reduction to the existing level of daylight to no less than 80% of its former value. Any greater reduction than this is likely to have a noticeable affect on amenity. If this occurs then applications may be refused.

Average Daylight Factor

Average Daylight Factor is a measure of the level daylight in a room. It can be used to establish whether a room will have a predominantly daylit appearance. It provides light levels below which a room should not fall even if electric lighting is provided.

- 6.11 The Average Daylight Factor can be used as a measure to determine whether a room will receive adequate daylight (expressed as a percentage). The ADV takes into account the:
- net glazed area of windows;

- the total area of the room surfaces (ceiling, floor, walls, and windows);
 - the average reflectance; and
 - the angle of visible sky.
- 6.12 If a predominately daylit appearance is required, then the daylight factor should be 5% or more if there is no supplementary electric lighting, or 2% or more if supplementary electric lighting is provided. This figure should be as high as possible to enable occupiers to rely on as much natural light and not use artificial lighting, but as a minimum for dwellings the figures should be 2% for kitchens, 1.5% for living rooms and 1% for bedrooms.
- 6.13 These minimum figures may not be applicable when measuring the impact of new buildings on existing dwellings as the simple preservation of minimum ADFs will not necessarily be seen as an indication of acceptability, especially if the VSC demonstrates a significant worsening in daylight levels. For existing dwellings the Council will consider the overall loss of daylight as opposed to the minimum acceptable levels of daylight. As the BRE guidance suggests, the readings will be interpreted flexibly as their aim is to support rather than constrain natural lighting. However, daylight is only one of the many factors in site layout design. Therefore, when applying these standards in Camden, we will take into consideration other site factors and constraints.
- 6.14 The calculation of the VSC and the ADF is complex. For full details on how these calculations are carried out you should refer to the most up to date version the BRE's "Site layout planning for daylight and sunlight: A guide to good practice". For more complex and larger developments we will expect a daylight study to be submitted with the planning application showing the windows that will be affected and provide before development and post development figures for VSC and ADF.
- 6.15 Other methods can be used to measure daylight and these can be incorporated in daylight and sunlight reports, where necessary, as a supplement to VSC and ADF measurements, such as the No Sky Line (NSL) test contained within BRE guidance.

Sunlight

- 6.16 The design of your development should aim to maximise the amount of sunlight into rooms without overheating the space and to minimise overshadowing.

WHAT DOES THE COUNCIL EXPECT?

New developments should be designed to provide at least one window to a habitable space facing within 90 degrees of south, where practical. This window should receive at least 25% of Annual Probable Sunlight Hours, including at least 5% of Annual Probable Sunlight Hours between 21 September and 21 March, where possible.

Annual Probable Sunlight Hours

The annual amount of sunlight a window receives in an average year.

- 6.17 The BRE's "Site layout planning for daylight and sunlight: A guide to good practice" provides guidance on access to sunlight in relation to:
- site layout, building orientation and overshadowing for new buildings;
 - protecting sunlight to existing buildings, and
 - new and existing gardens and open spaces.
- 6.18 Design for access to sunlight will be specific to the orientation of your site, and the specific design and uses within your proposed development. You should follow the detailed design requirements recommended in the "Sunlighting" section of the BRE document. The Council recognises that not all of the guidance contained within the BRE document, particularly orientation, can be adhered to in all developments due to the dense and constrained urban nature of Camden.

Other considerations**Right to Light**

- 6.19 The right to light is a legal right which one property may acquire over the land of another. If a structure is erected which reduces the light to an unobstructed property to below sufficient levels this right is infringed. A right to light can come into existence if it has been enjoyed uninterrupted for 20 years or more, granted by deed, or registered under the Rights of Light Act 1959. Planning permission does not override a legal right to light, however where a right to light is claimed, this is a matter of property law, rather than planning law. The Council will have no role or interest in any private dispute arising and it will be for the owner or occupier affected to seek a legal remedy.

Supporting documents

- 6.20 For further information on daylight and sunlight please refer to:
- Building Research Establishment (BRE). Site layout planning for daylight and sunlight: A guide to good practice.
- Copies of this are available directly from BRE.

BRE Bookshop, 151 Roseberry Avenue, London, EC1R 4GB
020 7505 6622
brebookshop@emap.com
www.constructionplus.co.uk

7 Overlooking, privacy and outlook

KEY MESSAGES:

- Development are to be designed to protect the privacy of existing dwellings;
- Mitigation measures are to be included when overlooking is unavoidable;
- Outlook from new developments should be designed to be pleasant;
- Public spaces benefit from overlooking as natural surveillance.

- 7.1 This section aims to ensure that when designing your development you successfully consider the potential impact on the privacy and outlook of neighbouring properties.
- 7.2 This guidance relates to Core Strategy policy CS5 Managing the Impact of Growth and Development and Core Strategy policy CS14 Promoting high quality places and conserving our heritage.
- 7.3 Policy *DP26 – Managing the impact of development on occupiers and neighbours* of the Camden Development Policies outlines how the Council will protect the quality of life of occupiers and neighbours by only granting permission for development that does not cause harm to amenity.

Overlooking and privacy

- 7.4 Development should be designed to protect the privacy of both new and existing dwellings to a reasonable degree. Spaces that are overlooked lack privacy. Therefore, new buildings, extensions, roof terraces, balconies and the location of new windows should be carefully designed to avoid overlooking. The degree of overlooking depends on the distance and the horizontal and vertical angles of view. The most sensitive areas to overlooking are:
- Living rooms;
 - Bedrooms;
 - Kitchens; and
 - The part of a garden nearest to the house.

WHAT IS GOOD PRACTICE?

To ensure privacy, there should normally be a minimum distance of 18m between the windows of habitable rooms of different units that directly face each other. This minimum requirement will be the distance between the two closest points on each building (including balconies).

- 7.5 Where this standard cannot be met we may require you to incorporate some of the following design measures into your scheme to ensure

overlooking is reduced to an acceptable level. Design measures to reduce the potential for overlooking and the loss of privacy include:

- Careful consideration of the location of your development, including the position of rooms;
- Careful consideration of the location, orientation and size of windows depending on the uses of the rooms;
- Use of obscure glazing;
- Screening by walls or fencing; and
- Screening by other structures or landscaping.

7.6 Where landscaping is used as a method of screening, arrangements for ongoing maintenance should be put in place and this may be secured by a planning condition.

7.7 Public spaces and communal areas will benefit from a degree of overlooking due to the increased level of surveillance it can provide.

Outlook

7.8 Outlook is the visual amenity enjoyed by occupants when looking out of their windows or from their garden. How pleasant an outlook is depends on what is being viewed. For example, an outlook onto amenity space is more pleasant than an outlook across a servicing yard. You should design developments so that the occupiers have a pleasant outlook. You should screen any unpleasant features with permanent landscaping.

7.9 When designing your development you should also ensure the proximity, size or cumulative effect of any structures do not have an overbearing and/or dominating effect that is detrimental to the enjoyment of their properties by adjoining residential occupiers. You should carefully consider the location of bin or cycle stores if they are in close proximity to windows or spaces used by occupiers.

7.10 You should take particular care if your development adjoins properties with a single aspect over your development.

7.11 You should note that the specific view from a property is not protected as this is not a material planning consideration.

Further information

Better Places to Live: By Design - A companion guide to PPG3 (ODPM) makes number of design recommendations which recognise the importance of privacy in the home.

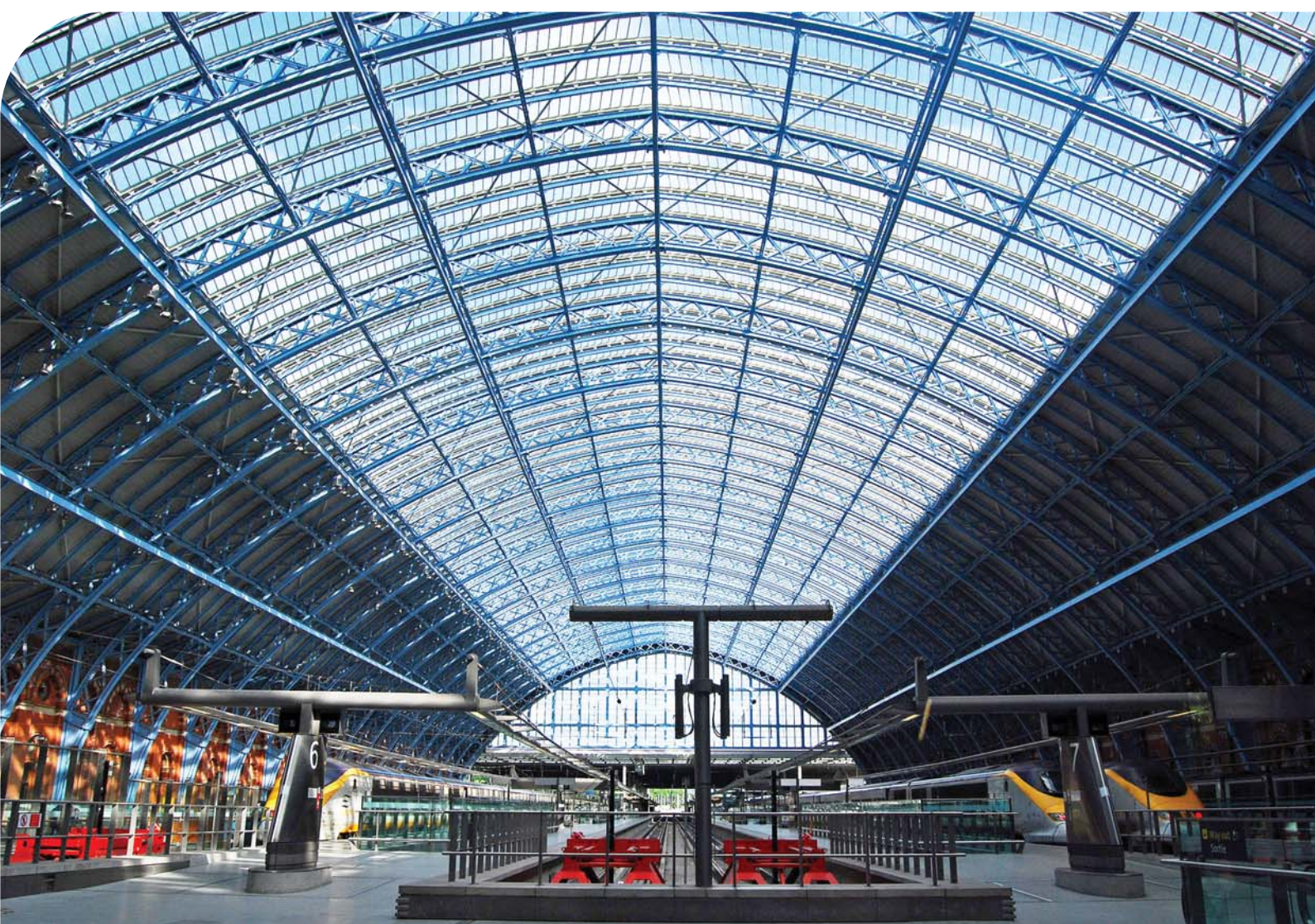
Perceptions of Privacy and Density in Housing report available from Design for Homes; 0870 416 3378 or www.designforhomes.org. This report highlights some of the issues facing households living at higher densities, and the implications for future design of buildings.

Camden Planning Guidance

Transport

London Borough of Camden

CPG 7



CPG7 Transport

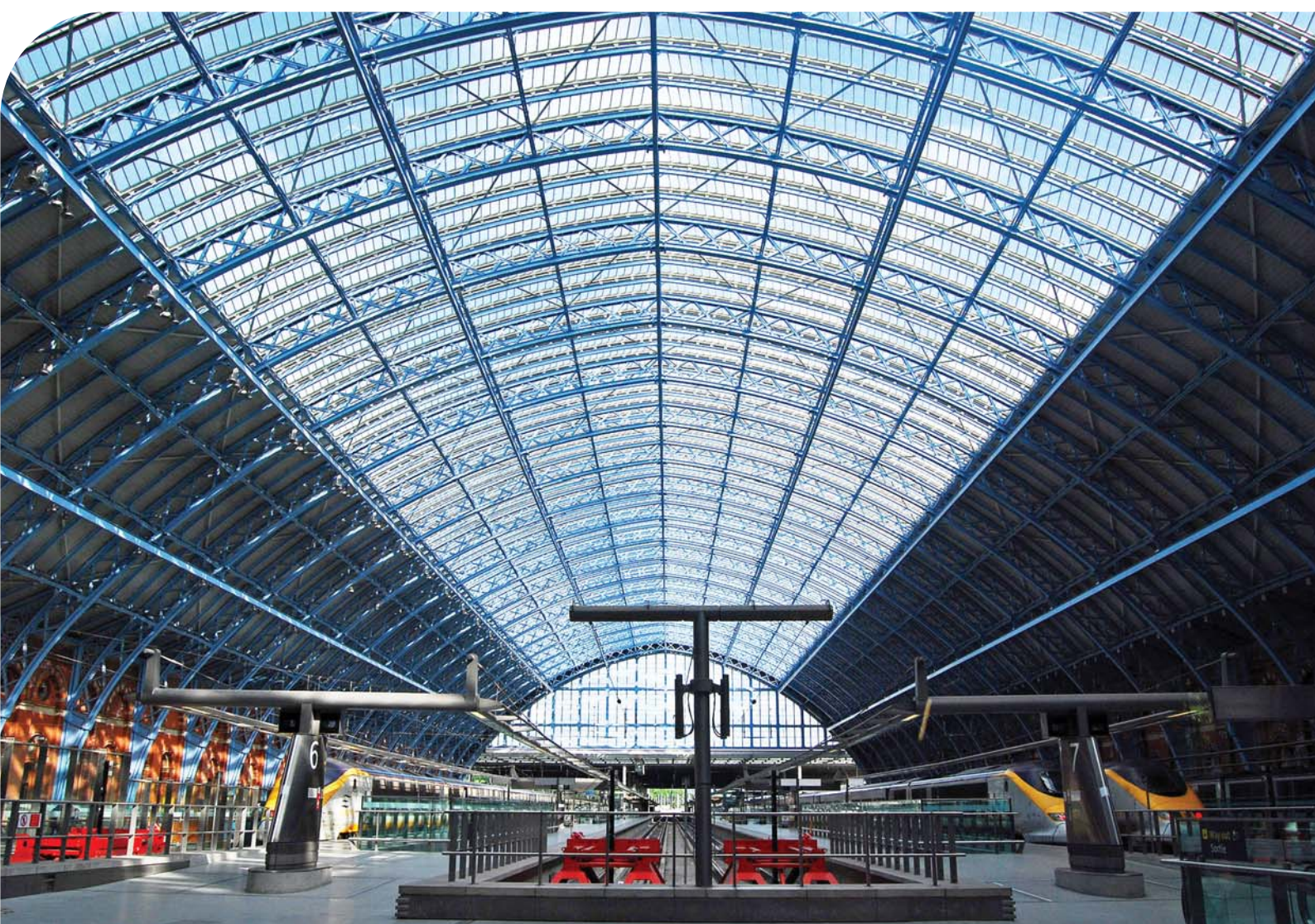
1	Introduction	5
2	Assessing transport capacity	7
3	Travel plans.....	13
4	Delivery and servicing management plans	21
5	Car free and car capped development.....	25
6	On-site car parking.....	29
7	Vehicle access	35
8	Streets and public spaces	41
9	Cycling facilities.....	47
10	Minicab offices	56

Camden Planning Guidance

Transport

London Borough of Camden

CPG 7



5 Car free and car capped development

KEY MESSAGES

- We expect car free development in the borough's most accessible locations and where a development could lead to on-street parking problems
- Legal agreements will be used to maintain car-free and car-capped development over the lifetime of a scheme

- 5.1 This section explains further the terms car-free and car-capped development, as referred to in the Camden Core Strategy and Camden Development Policies, the mechanisms that are needed to secure them, and the circumstances in which it will be appropriate for the Council to refuse additional dwellings that are not car free or car capped.
- 5.2 It relates to Core Strategy Policy CS7 – *Promoting sustainable and efficient travel* and policies DP18 – *Parking standards and limiting the availability of parking* and DP19 – *Managing the impact of parking* of the Camden Development Policies.

Car-free development

A development which has no parking within the site and occupiers are not issued with on-street parking permits

Car-capped development

A development which has a limited amount of on-site car parking, but no access to on-street parking permits.

- 5.3 Car-free and car capped development is successful in Camden because most of the borough has very good access to public transport services. Levels of car ownership are low compared with London generally, and choosing not to own a car can be an attractive lifestyle option. The guidance in this section covers:
- What car free development is, and where it is sought;
 - What car capped development is, and where it is sought;
 - Implementation of off-street parking restrictions for car-free and car-capped development, including partial provision of car free and car capped development, and maintaining the on-street parking rights of existing occupiers;
 - Meeting the parking needs of disabled people.

When we expect car free and car capped housing

- 5.4 Car free and car capped requirements apply to developments in particular locations and circumstances:
- we expect car free development in the Central London area, our town centres and other areas with high public transport accessibility (see Development Policy DP18);

- we will also expect car free development where the creation of a new access could lead to on-street parking problems where the loss of kerb space creates unacceptable parking pressure. Refer to Development Policy DP21, and the Access section of this guidance for more information);
 - Car capped development applies to schemes that would have an unacceptable impact on on-street parking conditions or highway management and safety through the introduction of new units with access to on-street parking permits (see Development Policy DP19).
- 5.5 Car-free or car-capped housing may be sought wherever development involves the creation of one or more additional dwellings – whether newly built, or created by a conversion or change-of-use.
- 5.6 Non-residential development can potentially involve car-free or car-capped designation if it creates a new non-residential address or involves a change-of-use that would otherwise increase the demand for car parking. This reflects the operation of the parking permit scheme, where permits relate to individual addresses.

Car free development

- 5.7 Car-free development is development that does not have any car parking. No parking is provided or allowed on the site (except parking designated for disabled people), and all of the dwellings or units created are not entitled to on-street car parking permits. Where we seek car free development our parking standards do not apply as no parking is allowed.
- 5.8 Camden Development Policy DP18 states that we will expect development to be car free in the Central London Area, the town centres of Camden Town, Finchley Road/ Swiss Cottage, Kentish Town, Kilburn High Road and West Hampstead, and other highly accessible areas.
- 5.9 'Highly accessible areas' are considered to be areas with a public transport accessibility level (PTAL) of 4 and above. The PTAL of a specific site can be established using Transport for London's Planning Information Database website pages, which can be found at: <http://webpid.elgin.gov.uk/>.
- 5.10 Car free development will also be required where the creation of an access to allow off-street parking would reduce the availability of on-street parking (see also section 6 of this guidance on vehicle access), or would otherwise cause problems relating to highway management or safety. Policy DP19 of the Camden Development Policies states that we will resist developments that would harm on-street parking conditions or harm highway safety.

Car capped development

- 5.11 Car-capped development is development in which all of the dwellings or units created are not entitled to on-street car parking permits, although some or all of the dwellings or units created may have a parking space

on the site, in accordance Camden's parking standards (see policy DP18 and Appendix 2 of the Camden Development Policies). It therefore differs from car free development because some on-site car parking is allowed, in line with Camden's parking standards.

- 5.12 Car capped development is sought in developments that are not in the locations listed in paragraph 4.7 above, where additional off-street spaces can be accommodated within the development without harming highway or on-street parking conditions, but where additional on-street car parking is not considered acceptable.

Circumstances where additional on-street car parking is not acceptable

- 5.13 There are parts of the Borough where increasing competition for on-street parking through introducing additional premises with on-street parking rights is not acceptable. This is generally the case in the Central London Area, but also in many other areas where the parking spaces available cannot meet existing demand. This has implications for queuing and congestion, illegal parking, and highway safety. In these circumstances, if a developer will not enter into an agreement to designate the additional development as car-free or car-capped, planning permission will not be given.
- 5.14 In considering the ability of available on-street parking to accommodate the impact of additional development, we will have regard to the cumulative effect of proposals in the area, including unimplemented and partly implemented schemes already granted planning approval.
- 5.15 Our Parking and Enforcement Plan provides regularly updated permit data, which is used to establish levels of on-street parking pressure on each of the borough's roads. This information will be used when considering the acceptability of applications that would involve the potential allocation of additional on-street parking permits to the future occupiers of new development.

Implementation of on-street parking restrictions for car-free and car-capped development

- 5.16 The whole of Camden has controlled parking and, in principle, is appropriate for car-free or car-capped development. On most days, most parking spaces on residential streets are only available to people holding a parking permit issued by the Council. In Controlled Parking Zones we can restrict access to on-street car parking because we can control the issuing of parking permits.

Controlled Parking Zones

Designated areas in regulations control how parking may be used on different sections of the street and at different times.

- 5.17 In order to be able to maintain car-free and car-capped development over the lifetime of a scheme, the developer will be required to enter into

a legal agreement under Section 106 of the Town and Country Planning Act 1990 (as amended), which would permanently remove the entitlement to an on street parking permit for each home created:

- 5.18 The legal agreement requires the owner of the development to inform incoming occupiers that they are not eligible to obtain a parking permit for on-street parking, or to purchase a space in a Council-controlled car park. This part of the legal agreement stays on the local search in perpetuity so that any future purchaser of the property is informed that occupiers are not eligible for parking permits.

Maintaining on-street parking rights of existing occupiers

- 5.19 Existing parking rights can normally be retained on development sites, where it can be demonstrated that existing occupiers are to return to the address when it is completed. This is common where an existing dwelling or block is being extended or subdivided. It can also occur where a change-of-use brings a site or property into residential occupation.
- 5.20 If a development is to have new occupiers, existing parking rights will not apply, and the Council will apply its car-free / car-capped policies as set out in Development Policies DP18 and DP19.

Meeting the needs of disabled people

- 5.21 Car-free development and car-capped development should be designed taking into account the needs of disabled car users. Blue Badge holders are able to use parking spaces in Controlled Parking Zones without a parking permit. Minimum parking standards apply to parking for people with disabilities, and 1 parking space for people with disabilities is required per 10 general-purpose dwellings (see Appendix 2 of the Camden Development Policies document). In addition, where car-free and car-capped developments contain wheelchair housing, the Council will expect a parking space to be provided for each wheelchair dwelling. Where a resident in need of a reserved disabled parking space moves into a development with no off-street spaces, the Council will consider a request for a designated disabled space on-street in the same way whether the development is formally car-free or not.

Further information

- 5.22 In addition the guidance above regard should also be had to Camden's Parking and Enforcement Plan (2004), which provides further information on our approach to managing parking in the borough.